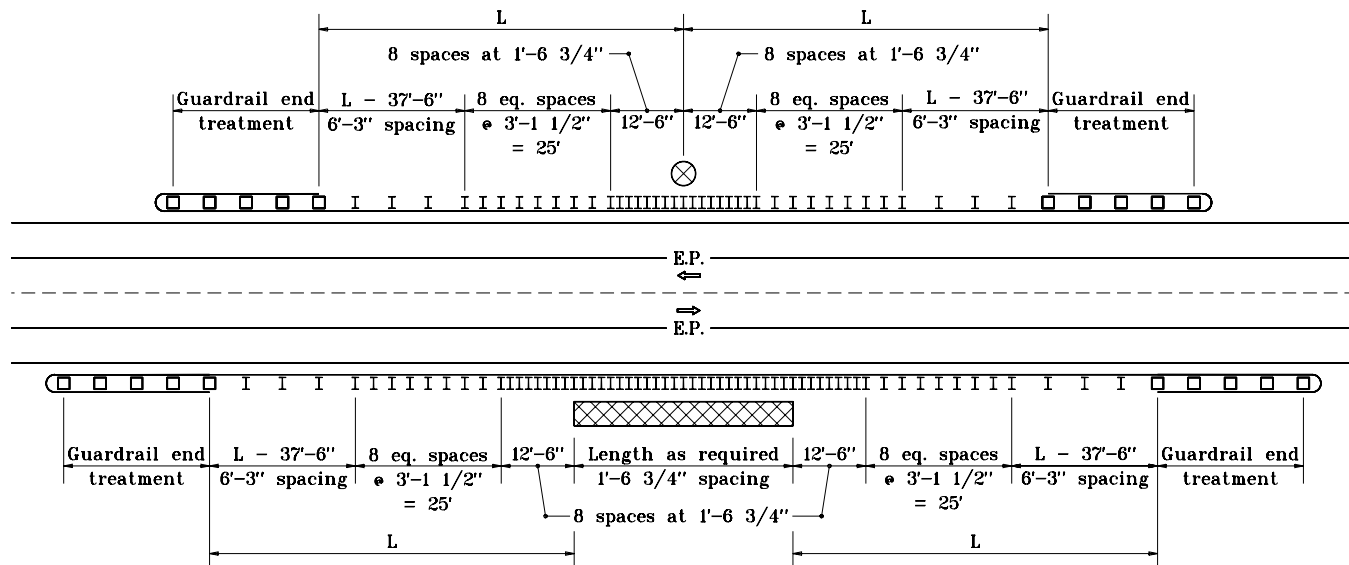


LEGEND

L = Length of need

⊗ Isolated hazard

⊠ Extended hazard



TWO-LANE TWO-WAY ROADWAY GUARDRAIL LAYOUT FOR GUARDRAIL FACE TO HAZARD DISTANCE $\geq 2'-9"$ BUT $< 3'-3"$

GENERAL NOTES

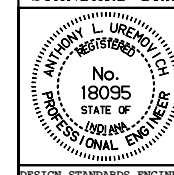
1. This sheet shall be used when W-beam guardrail at 1'-6 3/4" or 3'-1 1/2" post spacing is specified on two-lane two-way roadways to shield an isolated or extended hazard.
2. The details on this sheet are typical guardrail layouts for shielding isolated and extended hazards for the guardrail-face-to-hazard distances shown.
3. Dimensions and details not shown on this sheet shall be as shown on the plans.

INDIANA DEPARTMENT OF TRANSPORTATION

ROADSIDE HAZARD PROTECTION GUARDRAIL

SEPTEMBER 1997

STANDARD DRAWING NO. E 601-RHPG-04



DETAILS PLACED IN THIS FORMAT 11-15-99

/s/ Anthony L. Uremovich 11-15-99
DESIGN STANDARDS ENGINEER DATE

/s/ Firooz Zandi 11-15-99
CHIEF HIGHWAY ENGINEER DATE

DESIGN STANDARDS ENGINEER

ORIGINALLY APPROVED 9-02-97