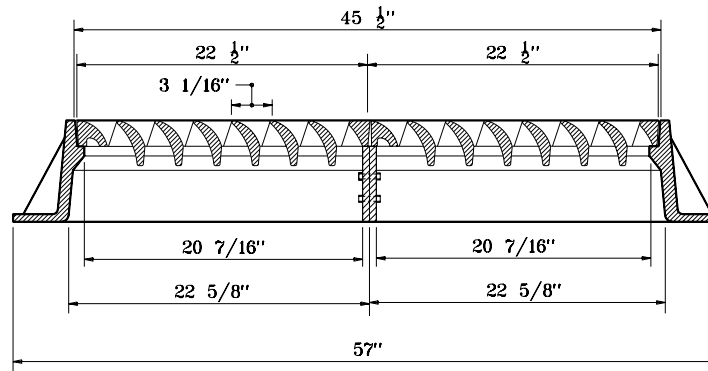
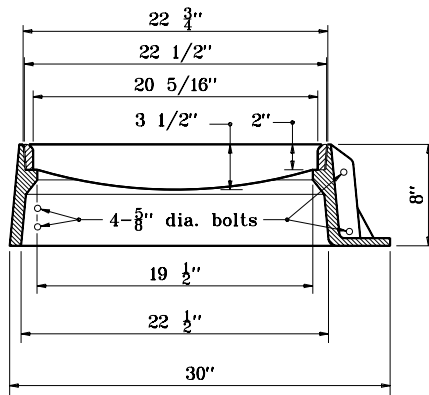
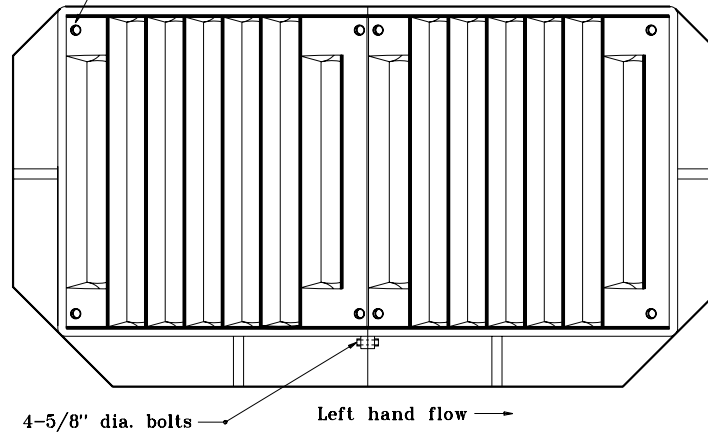


Grate is bolted to
frame with 1/2" hex head
SS bolts. 4 req'd. each grate.

BARRIER SIDE



**FRAME AND GRATE
CASTING TYPE 5 (ALTERNATE)**

INDIANA DEPARTMENT OF TRANSPORTATION		
CASTING TYPE 5 (ALTERNATE)		
FRAME AND GRATE		
SEPTEMBER 2001		
STANDARD DRAWING NO. E 720-ICCA-03		
	/s/ Anthony L. Uremovich 9-04-01	
	DESIGN STANDARDS ENGINEER	DATE
	/s/ Firooz Zandi 9-04-01	
	CHIEF HIGHWAY ENGINEER	DATE
DESIGN STANDARDS ENGINEER		