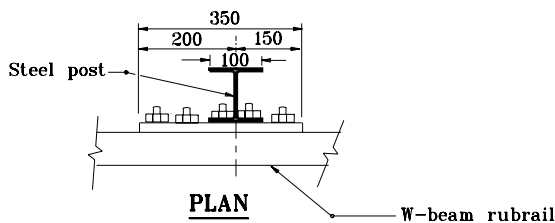
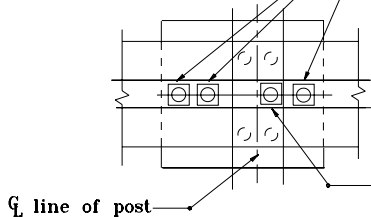


**STEEL PLATE DETAIL**

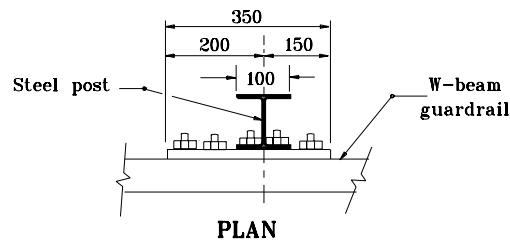
**STEEL PLATE AND WASHER DETAILS**



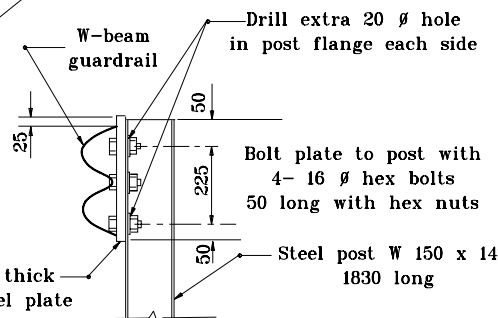
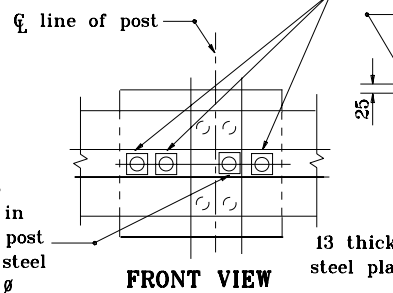
3 - 25  $\phi$  holes to be field drilled in rail and attached to steel plate with 22  $\phi$  hex bolts 50 long with square washer.



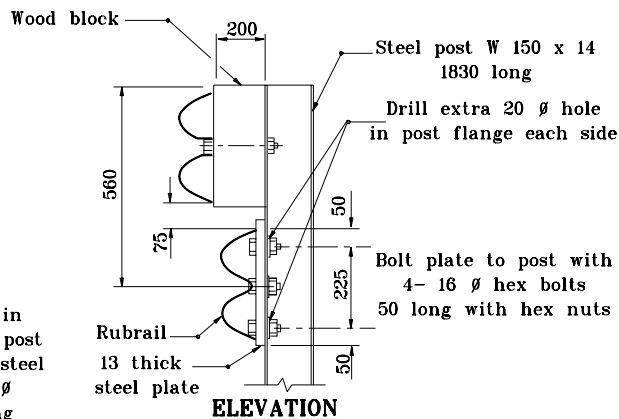
**RUBRAIL ANCHOR DETAILS**



3 - 25  $\phi$  holes to be field drilled in rail and attached to steel plate with 22  $\phi$  hex bolts 50 long with square washer.



**POST ANCHOR DETAILS**



25  $\phi$  holes to be field drilled in rail and through post flange. Attach to steel plate with 22  $\phi$  hex bolts 50 long with square washer.

All dimensions are in mm unless otherwise specified.

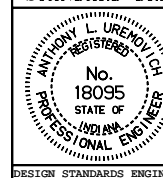
INDIANA DEPARTMENT OF TRANSPORTATION

**GUARDRAIL END TREATMENT**

**TPPE II-COMPONENTS**

SEPTEMBER 2000

STANDARD DRAWING NO. **601-GRET-11**



/s/ Anthony L. Uremovich 9-01-00  
DESIGN STANDARDS ENGINEER DATE

/s/ Firooz Zandi 9-01-00  
CHIEF HIGHWAY ENGINEER DATE

DESIGN STANDARDS ENGINEER