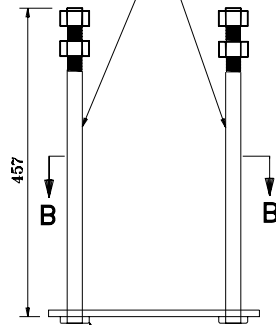
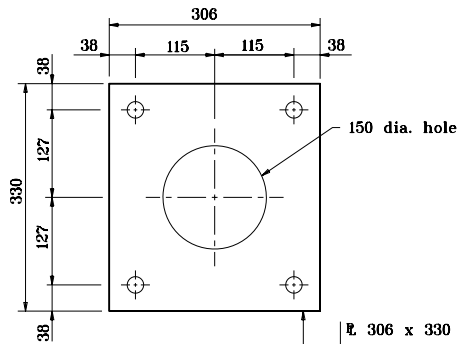


4 - 22  $\phi$  anchor bolts threaded 127 min. with 2 nuts and flat washers

2 - Threaded 19  $\phi$  reduced weld base stud x 51 long (see Detail) w/1- $\frac{1}{2}$  washer C (see Detail) 1 lock washer and nut  $\phi$  100 ga.

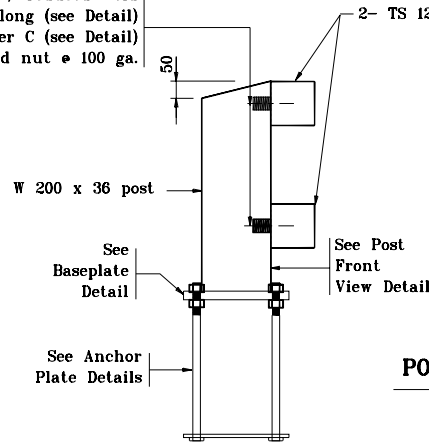


Tack weld plate to bolt head in two places (typ.)



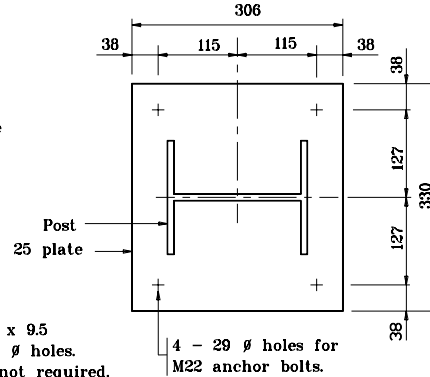
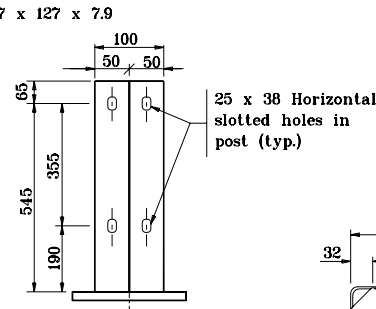
$\frac{1}{2}$  306 x 330 x 9.5 with 4 - 24  $\phi$  holes. Galvanizing not required.

**SECTION B - B  
ANCHOR PLATE DETAILS**

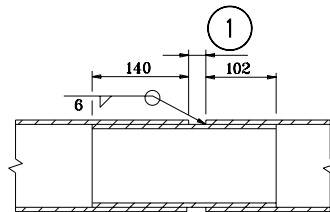


**SECTION A - A**

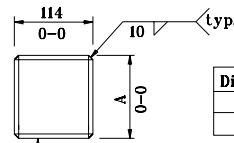
**POST FRONT VIEW DETAIL**



**BASE PLATE DETAILS**

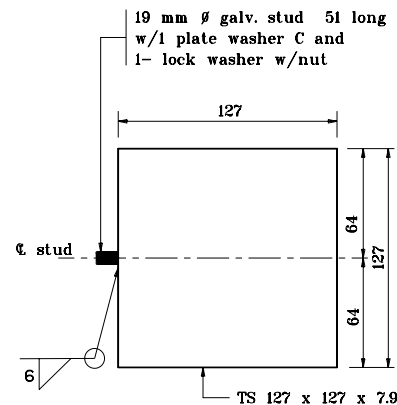


**RAILING SPLICE DETAILS**



Make splice tube from 10 thick  $\frac{1}{2}$

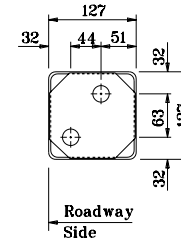
Dim. A	Tubing Size
114	127 x 127
64	127 x 76



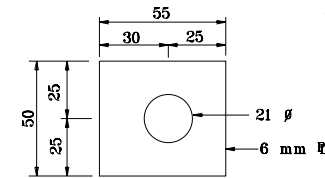
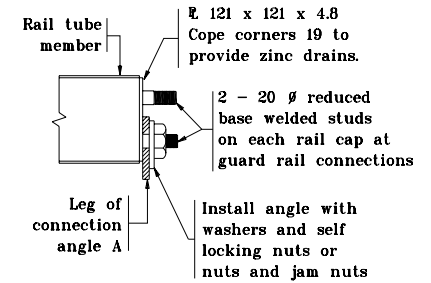
**BASE WELD STUD DETAIL**

## NOTES

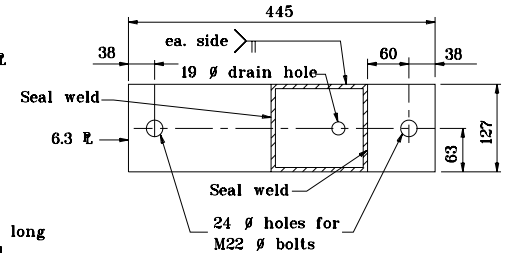
- 1 Gap of 25 unless noted otherwise on plans. Railing splice required in panel with a deck expansion joint.



**RAILING CAP DETAIL**



**PLATE WASHER C DETAIL**



**TOP RAILING END VIEW B - B**

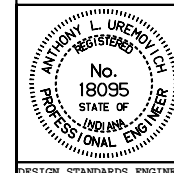
All dimensions are in mm unless otherwise specified.

INDIANA DEPARTMENT OF TRANSPORTATION

**RAILING, CF-1**

MAY 2000

STANDARD DRAWING NO. **706-BRTM-02**



/s/ Anthony L. Uremovich 5-01-00  
DESIGN STANDARDS ENGINEER DATE

/s/ Firooz Zandi 5-01-00  
CHIEF HIGHWAY ENGINEER DATE