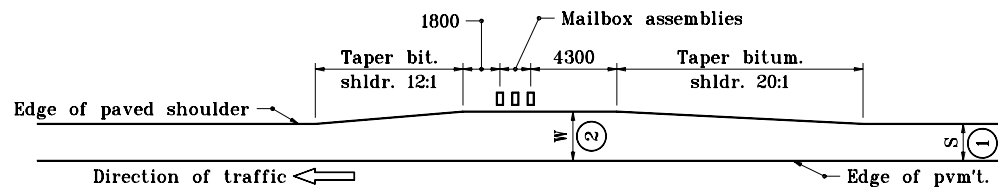
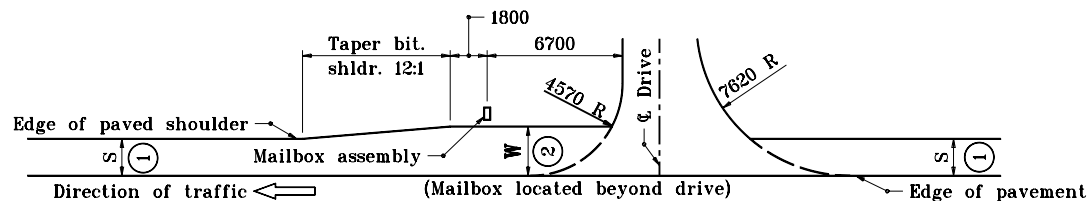


### GENERAL NOTES

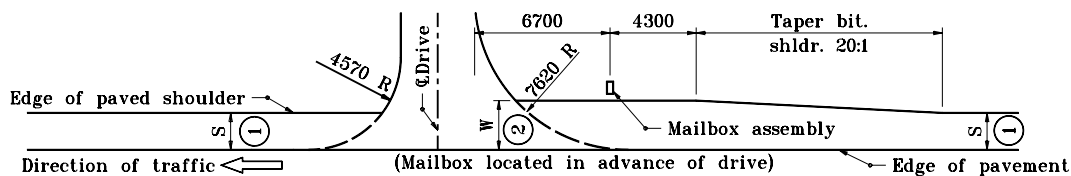
- ① S = Normal width of bituminous shoulder as shown on plans.
- ② W = Width of mailbox approach at mailbox.  
 W = 3600 preferred, 3000 minimum for A.D.T. equal to or greater than 1500.  
 W = 3000 preferred, 2400 minimum for A.D.T. of 100 or greater, and less than 1500.
3. Mailbox approach pavement material shall be the same as the shoulder material.



**TYPICAL MAILBOX APPROACH**



**COMBINATION MAILBOX APPROACH & DRIVE**



**COMBINATION MAILBOX APPROACH & DRIVE**

All dimensions are in mm unless otherwise specified.

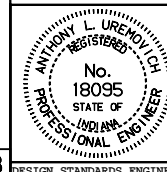
INDIANA DEPARTMENT OF TRANSPORTATION

**MAILBOX APPROACH**

**PLAN VIEWS**

SEPTEMBER 1999

STANDARD DRAWING NO. **611-MBAP-01**



/s/ Anthony L. Uremovich 9-01-99  
 DESIGN STANDARDS ENGINEER DATE

/s/ Donald W. Lucas 9-01-99  
 CHIEF HIGHWAY ENGINEER DATE

Source Sheet: **MH3**