

Multi-Lane Divided Bridge Approach Guardrail

TABLE B-1-2				
MEDIAN SHOULDER BRIDGE APPROACH GUARDRAIL LENGTHS, m				
Median	DESIGN SPEED (km/h)			
Slopes	80	90	100	110
Flatter than 6:1	(4) 6.0 46	7.0 55	9.0 69	9.0 76
6:1	6.5 48	8.0 59	10.0 72	10.5 82
5:1	7.5 51	8.5 61	11.0 76	11.5 83

NOTES:

1. This drawing shall be used when W-beam guardrail is specified for bridge approach guardrail and is connected to the bridge rail with guardrail transition type TGB.

2. See Table B-1-2 for required length. The actual length of guardrail required at each location shall be as shown on the plans.

(3) See Standard Drawing 601-BAGR-01 for Table B-1-1 for required minimum length X.

4. Explanation for Table B-1-2:

6.0 = clear zone, m
46 = req'd length of double faced guardrail at 1.905 m post spacing, m

(5) See alternate placement detail on Standard Drawing 601-GRET-07.

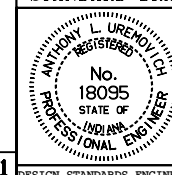
(6) Lw = length of W-beam guardrail at 1.905 m post spacing, m.

All dimensions are in mm unless otherwise specified.

INDIANA DEPARTMENT OF TRANSPORTATION

**MEDIAN BRIDGE
APPROACH GUARDRAIL**
MAY 1999

STANDARD DRAWING NO. **601-BAGR-02**



/s/ Anthony L. Uremovich 5-03-99
DESIGN STANDARDS ENGINEER DATE

/s/ Donald W. Lucas 5-03-99
CHIEF HIGHWAY ENGINEER DATE

Source Sheet: **B-1**