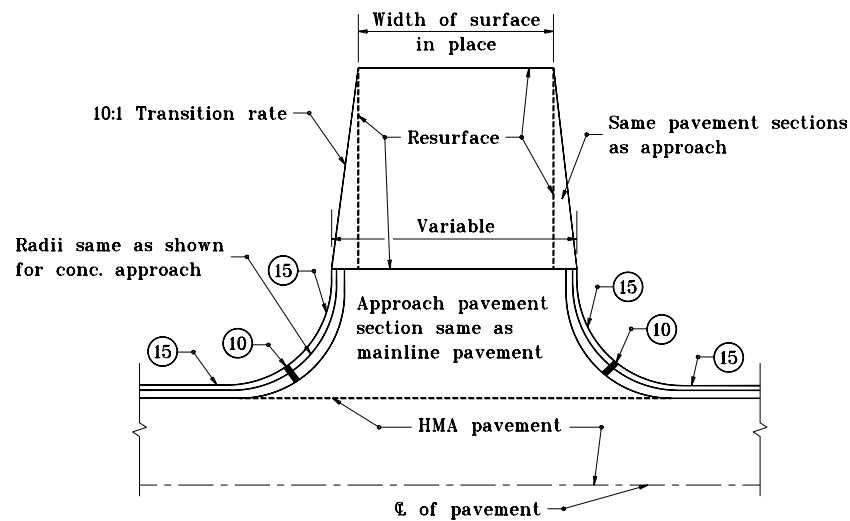


**STREET APPROACH
WITH PCCP MAINLINE APPROACH**



**STREET APPROACH
WITH HMA MAINLINE PAVEMENT**

GENERAL NOTES

- ① Provide radii of 10 m or more at major cross streets where WB-15 trucks and or buses turn repeatedly.
- ② Provide radii of 20 m or more at the intersection of two State or U.S. highways and streets servicing heavy industrial areas requiring repeated turns by the Indiana Single (legal maximum) Vehicle.
- ③ Ear construction Type B as shown on Standard Drawing 605-ERCN-02 will be permitted.
4. See General Notes on Standard Drawing 610-PRAP-11.

LEGEND

- (A) PCCP
- (K) HMA pavement
- (5) Longitudinal joint
- (7) Keyway joint
- (9) 30 Preformed joint filler
- (10) 10 Preformed joint filler
- (14) Integral concrete curb
- (15) Combined curb and gutter
- (20) Contraction joint

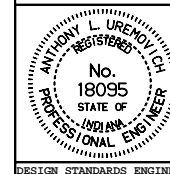
All dimensions are in mm unless otherwise specified.

INDIANA DEPARTMENT OF TRANSPORTATION

STREET APPROACH

JANUARY 2000

STANDARD DRAWING NO. 610-PRAP-14



/s/ Anthony L. Uremovich 1-03-00
DESIGN STANDARDS ENGINEER DATE

/s/ Firooz Zandi 1-03-00
CHIEF HIGHWAY ENGINEER DATE

DESIGN STANDARDS ENGINEER