

### SECTION B-B

1. Aluminum punched walkway deck extrusion may be used as substitute. It shall weigh at least 3.1 kg/m. The overall dimensions are 65 x 150. Four widths shall be welded together to attain the 600 mm width required. The 22 x 85 punchings shall be on 75 mm centers at a 45° angle.
2. Walkway deck extrusion may be used as a substitute for the standard walkway. A different grating of equal design strength may be used upon approval.
3. The top surface of the walkway grating shall be deformed to allow for better traction.
4. Handrail and grating shall span a minimum of 3 brackets.

⑤ See Standard Drawing 803-SNWW-06 for Detail F.

⑥ See Standard Drawing 803-SNWW-06 for Detail G.

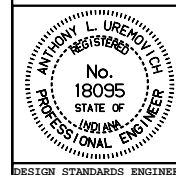
All dimensions are in mm unless otherwise specified.

INDIANA DEPARTMENT OF TRANSPORTATION

### SIGN TRUSS DETAILS

JANUARY 2000

STANDARD DRAWING NO. 803-SNWW-02



/s/ Anthony L. Uremovich 1-03-00  
DESIGN STANDARDS ENGINEER DATE

/s/ Firooz Zandi 1-03-00  
CHIEF HIGHWAY ENGINEER DATE