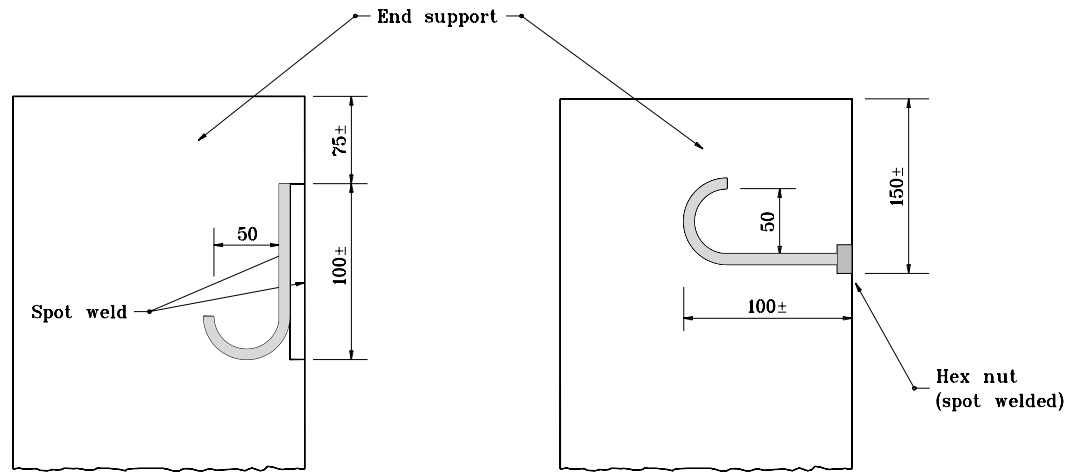


J HOOKS



TYPE A

TYPE B

NOTES:

1. Type A hook shall consist of two 6 mm to 10 mm stainless steel bars, constructed as shown in detail above and spot welded to inside of the end support.
2. Type B hook shall consist of one 10 mm to 10 mm stainless steel bar shaped as shown in detail above, threaded on straight end and fastened to inside by means of a hex nut spot welded to the end support.

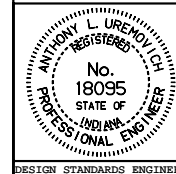
All dimensions are in mm unless otherwise specified.

INDIANA DEPARTMENT OF TRANSPORTATION

**SIGN STRUCTURE TRUSS
DETAILS**

JANUARY 2000

STANDARD DRAWING NO. **803-SNOH-02**



/s/ Anthony L. Uremovich 1-03-00
DESIGN STANDARDS ENGINEER DATE

/s/ Firooz Zandi 1-03-00
CHIEF HIGHWAY ENGINEER DATE

DESIGN STANDARDS ENGINEER