

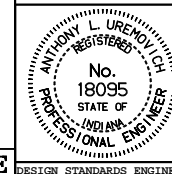
**REQUIRES TWO POLE BANDS AT EACH POSITION
ON POLE (SIX BANDS PER POLE)**

All dimensions are in mm unless otherwise specified.

INDIANA DEPARTMENT OF TRANSPORTATION

**POLE BAND FOR
SIGNAL STEEL STRAIN POLE**
MARCH 1995

STANDARD DRAWING NO. **805-SGSP-03**



/s/ Anthony L. Uremovich 3-01-95
DESIGN STANDARDS ENGINEER DATE

/s/ Donald W. Lucas 3-01-95
CHIEF HIGHWAY ENGINEER DATE

Source Sheet: NONE

DESIGN STANDARDS ENGINEER