

GENERAL NOTES

1. The upper 1.2 m to 1.8 m of the pole can be non-tapered.
- ② See Standard Drawing 805-SGMA-04 for Detail B.
- ③ See Standard Drawing 805-SGMA-04 for Detail C.
- ④ See Standard Drawing 805-SGMA-04 for Detail D.

Vertical Clearance Criteria
 Maintain 4.9 m minimum mast arm clearance above pavement.
 Maintain 5.2 m minimum and 5.8 m maximum clearances from top of pavement to lowest signal head.

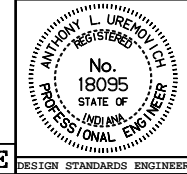
L (m) *	R After Loading	Cable Inlets Req'd.
3.6	1200 (± 50)	A
4.6	1200 (± 50)	A, B
6.1	1200 (± 50)	A, B
7.6	1300 (± 50)	A, B
9.1	1400 (± 50)	A, B
10.7	1400 (± 50)	A, B, C
12.2	1400 (± 50)	A, B, C

* The lengths listed in this table are the only permissible lengths

All dimensions are in mm unless otherwise specified.

INDIANA DEPARTMENT OF TRANSPORTATION
SIGNAL CANTILEVER ARM
TRUSS TYPE ARM
 JUNE 1996

STANDARD DRAWING NO. **805-SGMA-02**



/s/ Anthony L. Uremovich 6-03-96
 DESIGN STANDARDS ENGINEER DATE

/s/ Donald W. Lucas 6-03-96
 CHIEF HIGHWAY ENGINEER DATE

Source Sheet: NONE