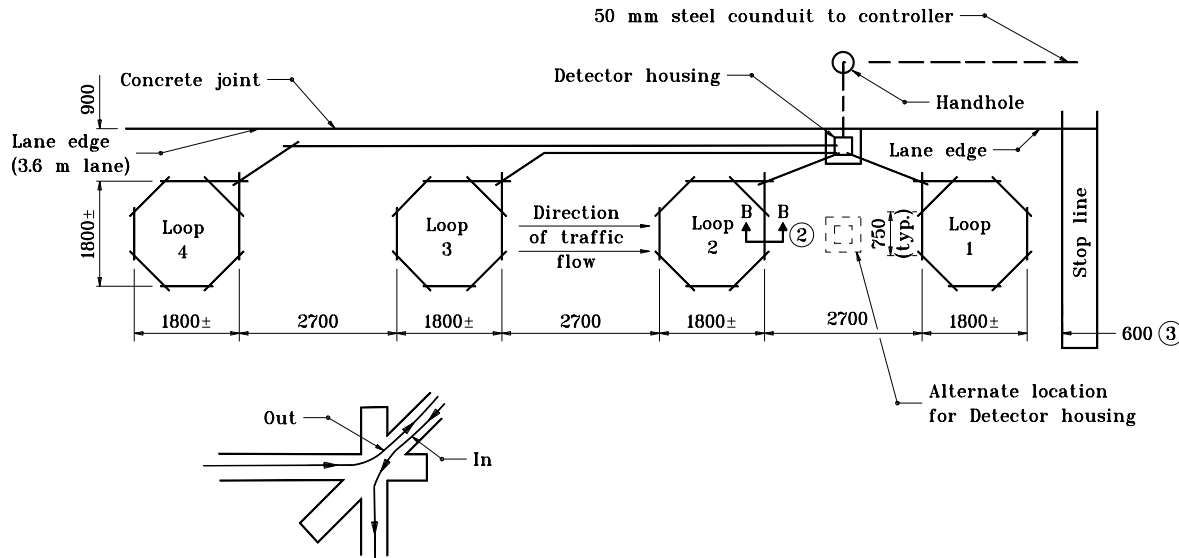


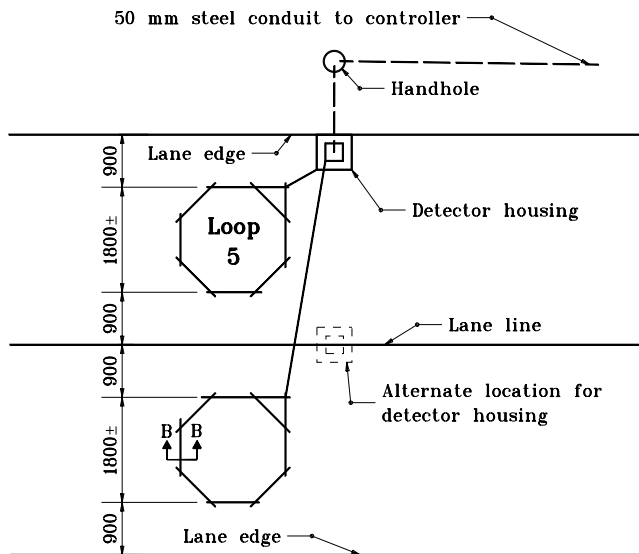
TYPICAL LOOP DETECTION SAW-CUT PLAN (ONE LANE)



GENERAL NOTES

1. Loop saw-cuts as shown on plan sheets are to be considered as schematic only. In the event of discrepancies, this detail shall govern.
- ② See Standard Drawing 805-SGLI-02 for Section B-B.
- ③ This distance is typical depending on the intersection geometrics; a loop can be sawed in front of the stop line.

TYPICAL LOOP DETECTION (TWO LANES)



All dimensions are in mm unless otherwise specified.

INDIANA DEPARTMENT OF TRANSPORTATION	
TRAFFIC SIGNAL LOOP INSTALLATION	
JUNE 1996	
STANDARD DRAWING NO. 805-SGLI-01	
	/s/ Anthony L. Uremovich 6-03-96 DESIGN STANDARDS ENGINEER DATE
DESIGN STANDARDS ENGINEER	/s/ Donald W. Lucas 6-03-96 CHIEF HIGHWAY ENGINEER DATE

Source Sheet: NONE