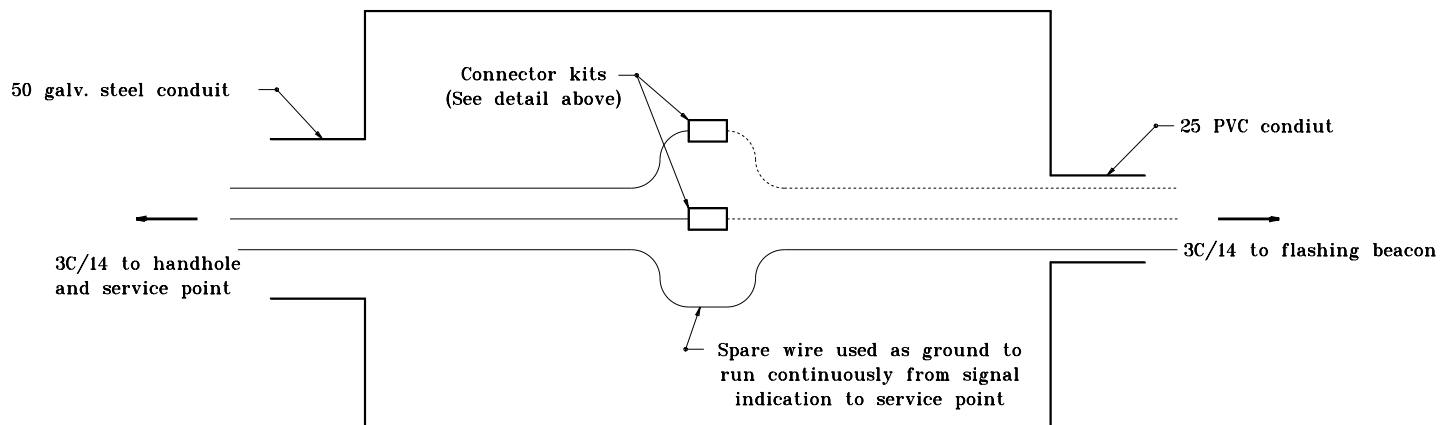


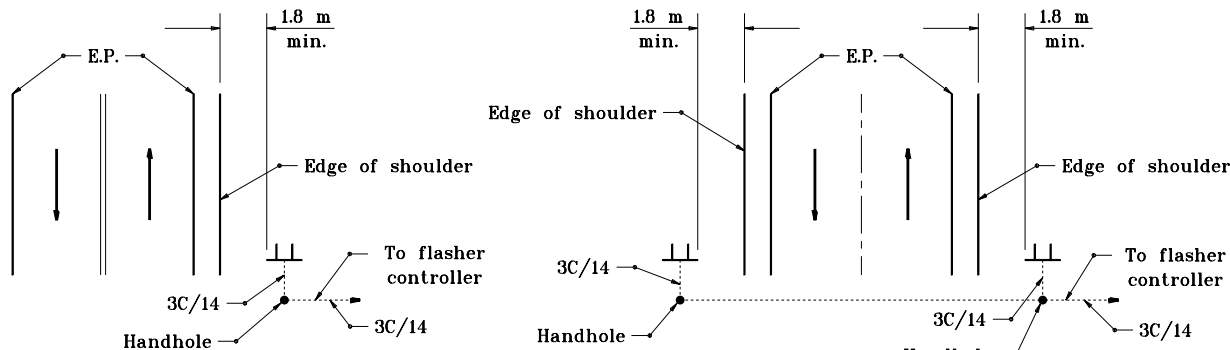
**DISCONNECT CONNECTOR KIT
TO BE USED IN DETECTOR HOUSING**



DETECTIOR HOUSING CONNECTIONS DETAIL

SINGLE LANE ROADWAY

MULTI-LANE ROADWAY



TYPICAL FLASHING BEACON CONFIGURATION

Source Sheet: NONE

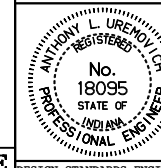
All dimensions are in mm unless otherwise specified.

INDIANA DEPARTMENT OF TRANSPORTATION

**FLASHING BEACON WITH
WARNING SIGN DETAILS**

APRIL 1996

STANDARD DRAWING NO. 805-SGFB-02



/s/ Anthony L. Uremovich 4-01-96
DESIGN STANDARDS ENGINEER DATE

/s/ Donald W. Lucas 4-01-96
CHIEF HIGHWAY ENGINEER DATE

DESIGN STANDARDS ENGINEER