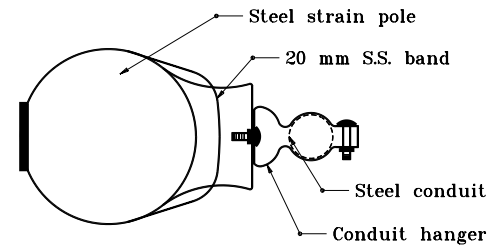


GENERAL NOTES

- ① This distance shall be from 2.4 m to 4.5 m above centerline of pavement for vehicular signals and from 2.1 m to 3.0 m above top of sidewalk for pedestrian signals.
- ② Each pedestrian signal and each vehicular signal requires 2 TL3301 pole plates and 2 UK671 pipe arms.

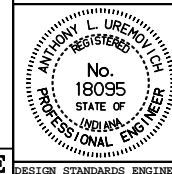


DETAIL A

All dimensions are in mm unless otherwise specified.

INDIANA DEPARTMENT OF TRANSPORTATION
**SIGNAL INDICATION MOUNTED
 ON STEEL OR WOOD POLES**
 APRIL 1996

STANDARD DRAWING NO. **805-SGCO-04**



/s/ Anthony L. Uremovich 4-01-96
 DESIGN STANDARDS ENGINEER DATE

/s/ Donald W. Lucas 4-01-96
 CHIEF HIGHWAY ENGINEER DATE

Source Sheet: NONE