

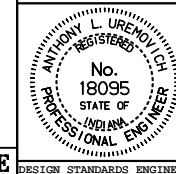
NOTES

1. The 840 mm and 1170 mm concrete bridge railings shall be built monolithically and continuous with no contraction joints at either mid-span or over the supports. Full depth open joints shall be provided only between the end of the structure and the concrete bridge approach.
- ② Extended barrier railing on superelevated decks placed the same way as concrete barrier for superelevated decks.
- Ⓐ Indicates barrier delineator. For details, see Standard Drawing 706-BCBR-04.

All dimensions are in mm unless otherwise specified.

INDIANA DEPARTMENT OF TRANSPORTATION
**CONCRETE BARRIER RAILING
 PLACEMENT**
 SEPTEMBER 1997

STANDARD DRAWING NO. **706-BCBR-03**



/s/ Anthony L. Uremovich 9-01-97
 DESIGN STANDARDS ENGINEER DATE

/s/ Donald W. Lucas 9-01-97
 CHIEF HIGHWAY ENGINEER DATE

Source Sheet: NONE