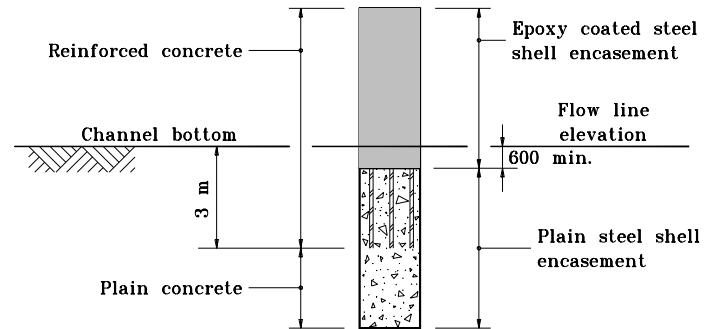
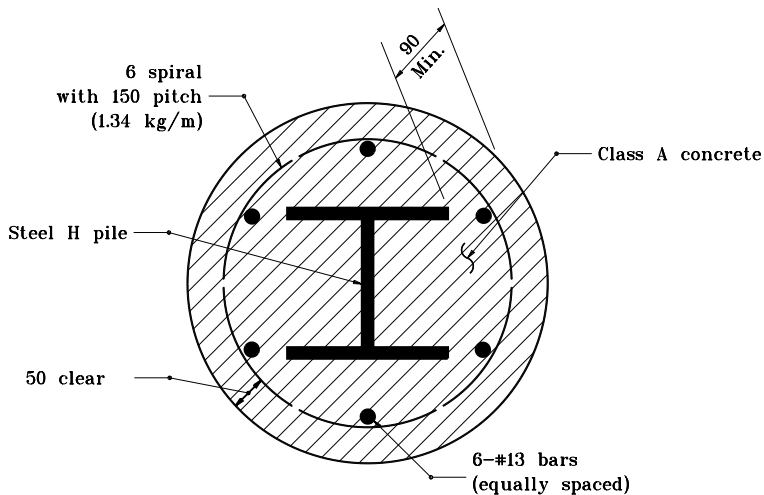


PLAN



ELEVATION

**EPOXY COATED STEEL SHELL ENCASED
REINFORCED CONCRETE PILE DETAIL**



REINFORCED CONCRETE ENCASED H-PILE DETAIL

	Reinf. Steel /m Length	Class A Conc. /m Length
HP 310x79	8.63 kg	0.31 m ³
HP 250x62	8.33 kg	0.25 m ³
HP 200x53	8.04 kg	0.20 m ³

All dimensions are in mm unless otherwise specified.

INDIANA DEPARTMENT OF TRANSPORTATION
**REINFORCED CONCRETE
 PILE DETAILS**
 JANUARY 1998
 STANDARD DRAWING NO. **701-BPIL-02**

ANTHONY L. UREMOWICZ
 REGISTERED
 No. 18095
 STATE OF INDIANA
 PROFESSIONAL ENGINEER

/s/ Anthony L. Uremovich 1-02-98
 DESIGN STANDARDS ENGINEER DATE

/s/ Donald W. Lucas 1-02-98
 CHIEF HIGHWAY ENGINEER DATE