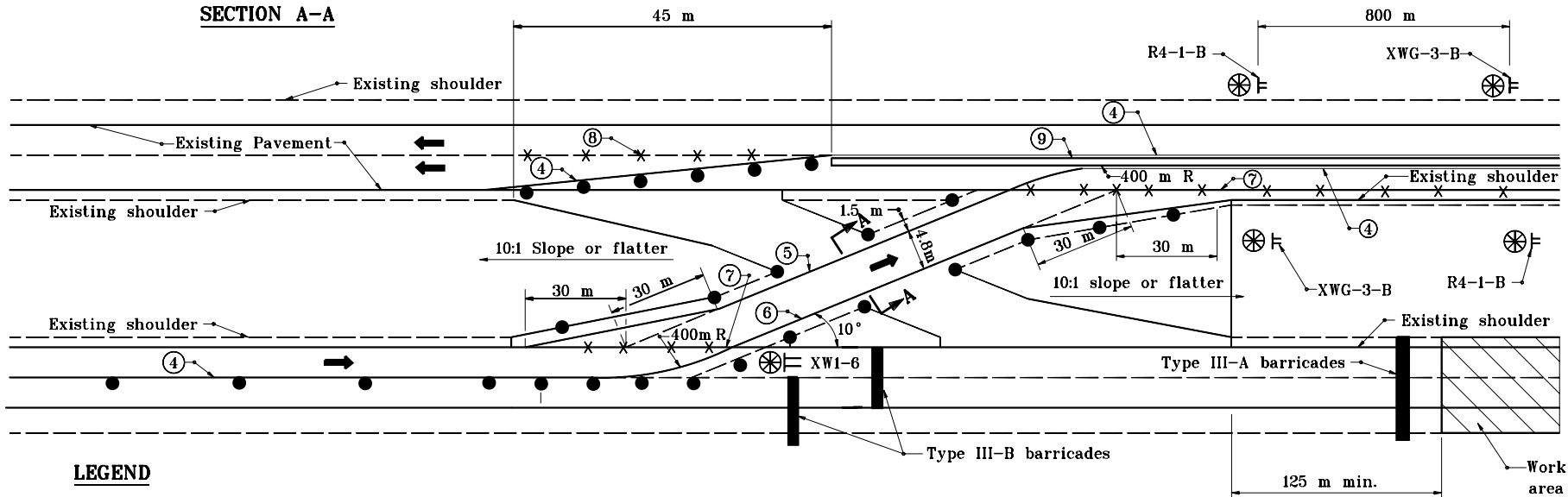


SECTION A-A



LEGEND

- ① Temporary Pavement Marking, I, White, 100
- ② Temporary Pavement Marking, I, Yellow, 100
- ③ Temporary Pavement Marking, II, White, 100
- ④ Temporary Pavement Marking, II, Yellow, 100
- ⑤ Temporary Pavement Marking, II, White, 200
- ⑥ Temporary Pavement Marking, II, Yellow, 200
- ⑦ Line, Solid Yellow, 100, Remove
- ⑧ Line, Broken White, 100 Remove
- ⑨ Temporary Concrete Barrier or Channelizing Devices
- ⑩ Energy Absorbing Terminal

⊗ Flashing Yellow Light

⬆ Flashing Arrow Sign

▬ Type III Barricade

● Drum

≡ Construction Sign A

≡ Construction Sign A & B

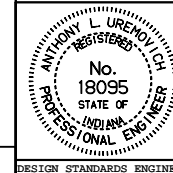
NOTES:

1. Signs XW6-3-B and R4-1-B shall be used only with temporary channelizing devices.
2. See Standard Drawing 611-TCCO-03 for signs legend.

All dimensions are in mm unless otherwise specified.

INDIANA DEPARTMENT OF TRANSPORTATION
TEMPORARY CROSSOVERS
ENTRANCE DETAIL
 JANUARY 1999

STANDARD DRAWING NO. **611-TCCO-02**



/s/ Anthony L. Uremovich 1-04-99
 DESIGN STANDARDS ENGINEER DATE

/s/ Donald W. Lucas 1-04-99
 CHIEF HIGHWAY ENGINEER DATE

Source Sheet: Det.1-A