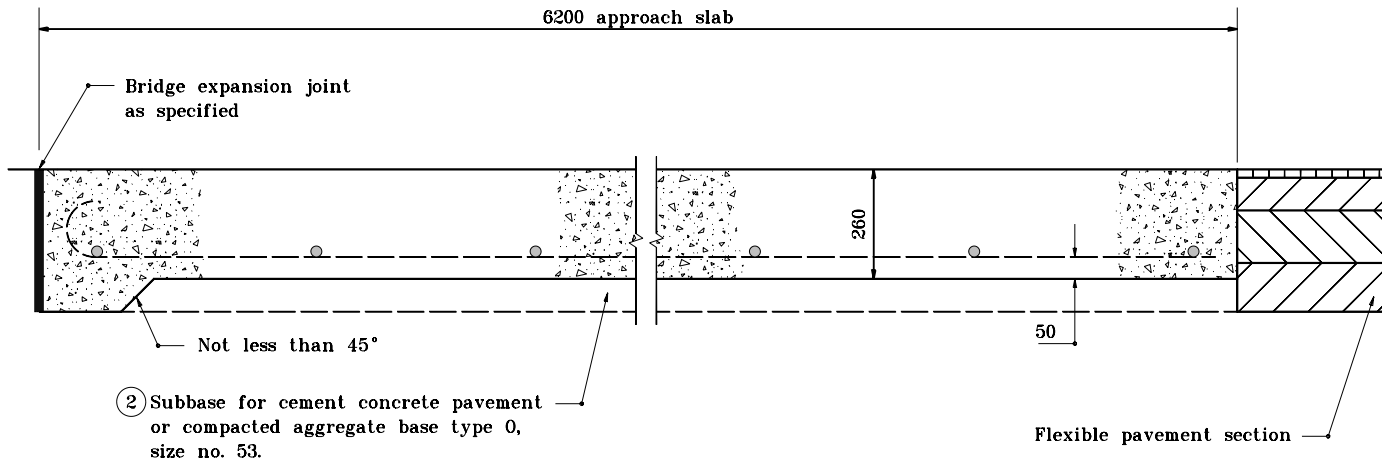


GENERAL NOTES

1. See Standard Drawing 610-RCBA-04 for reinforcement details.
- ② Subbase for cement concrete pavement shall only be used when underdrains are specified or existing.

6200 mm is recommended to match approach slab lengths shown on drawings 610-RCBA-02, 03, 04 & 05.

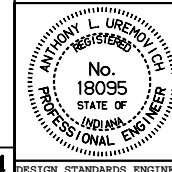


BRIDGE APPROACH SLAB FOR FLEXIBLE PAVEMENT

All dimensions are in mm unless otherwise specified.

INDIANA DEPARTMENT OF TRANSPORTATION
REINFORCED CONCRETE
BRIDGE APPROACH SLAB
 SEPTEMBER 1998

STANDARD DRAWING NO. **610-RCBA-01**



/s/ Anthony L. Uremovich 9-01-98
 DESIGN STANDARDS ENGINEER DATE

/s/ Donald W. Lucas 9-01-98
 CHIEF HIGHWAY ENGINEER DATE

Source Sheet: **RCBA1**

DESIGN STANDARDS ENGINEER