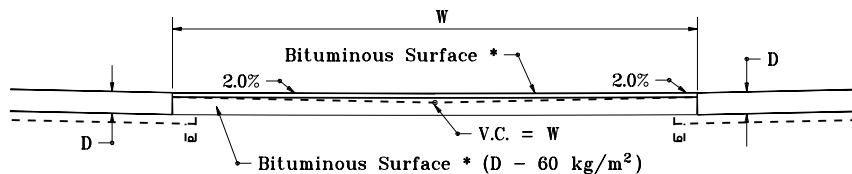
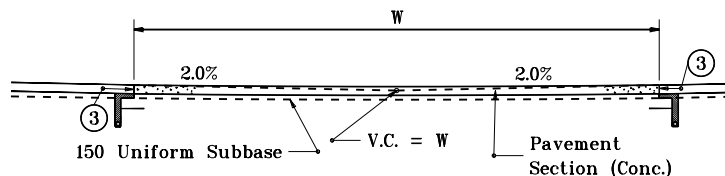


CROSSOVER WITH FLEXIBLE PAVEMENT SECTION



SECTION A-A

(TO BE USED WHEN APPROACH ROAD IS NOT RIGID PAVEMENT)



SECTION A-A

(TO BE USED WHEN APPROACH ROAD IS RIGID PAVEMENT)

GENERAL NOTES

1. Median crossovers are designed to accommodate a WB-50 design vehicle using a minimum turning radius of 13.7 m and an occasional Indiana single (legal maximum) design vehicle using 13.7 m turning radius.
2. The crossover lengths L are based on 90° road intersections. Skewed intersections will require a special design.
3. Plan dimensions for flexible pavement crossovers shall be as shown for rigid pavement on Standard Drawing 610-PRCO-02.

LEGEND

③ Keyway Joint

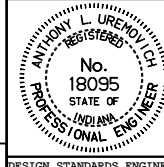
All dimensions are in mm unless otherwise specified.

INDIANA DEPARTMENT OF TRANSPORTATION

PUBLIC ROAD CROSSOVERS

SEPTEMBER 1997

STANDARD DRAWING NO. **610-PRCO-07**



/s/ Anthony L. Uremovich 9-01-97
DESIGN STANDARDS ENGINEER DATE

/s/ Donald W. Lucas 9-01-97
CHIEF HIGHWAY ENGINEER DATE

Source Sheet: **MJ1**

DESIGN STANDARDS ENGINEER