

**GENERAL NOTES**

1. Radii of 7620 at minor cross streets shall be provided on new construction and on reconstruction where space permits.
  2. Radii of 9140 or more at major cross streets shall be provided where feasible so that a truck may turn without encroachment.
  3. Radii of 12190 or more at major cross streets shall be provided where trucks and buses repeatedly turn.
- ④ Ear construction type B permitted as shown on Standard Drawing 605-ERCN-02.

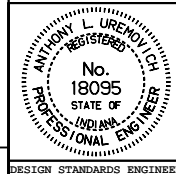
**LEGEND**

- Ⓐ Cement concrete pavement
- ⑤ Longitudinal joint
- ⑦ Keyway joint
- ⑨ 30 preformed joint filler
- ⑩ 10 preformed joint filler
- ⑭ Integral concrete curb
- ⑮ Combined curb and gutter
- ⑳ Contraction joint

All dimensions are in mm unless otherwise specified.

INDIANA DEPARTMENT OF TRANSPORTATION  
**STREET or ALLEY APPROACH**  
**FLEXIBLE MAINLINE PAVEMENT**  
 MAY 1998

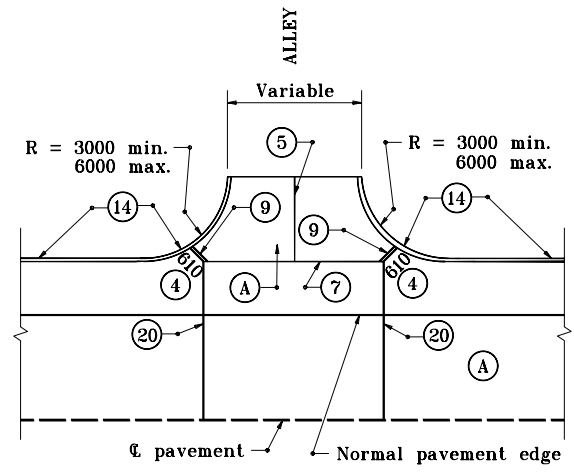
STANDARD DRAWING NO. **610-PRAP-13**



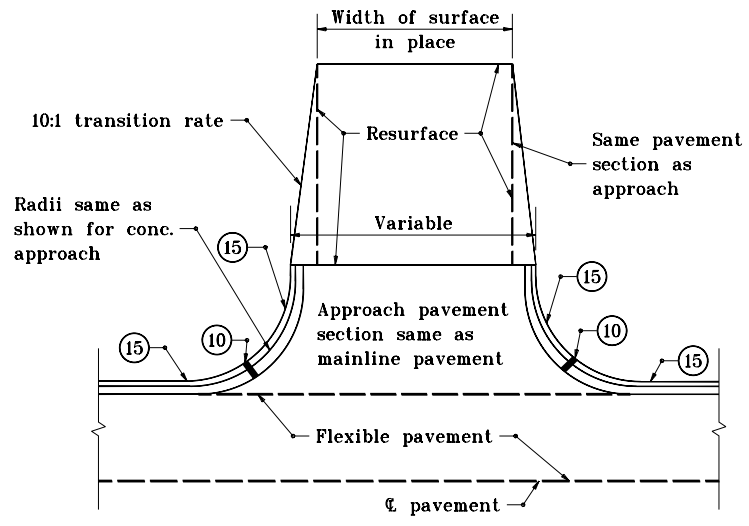
/s/ Anthony L. Uremovich 5-01-98  
 DESIGN STANDARDS ENGINEER DATE

/s/ Donald W. Lucas 5-01-98  
 CHIEF HIGHWAY ENGINEER DATE

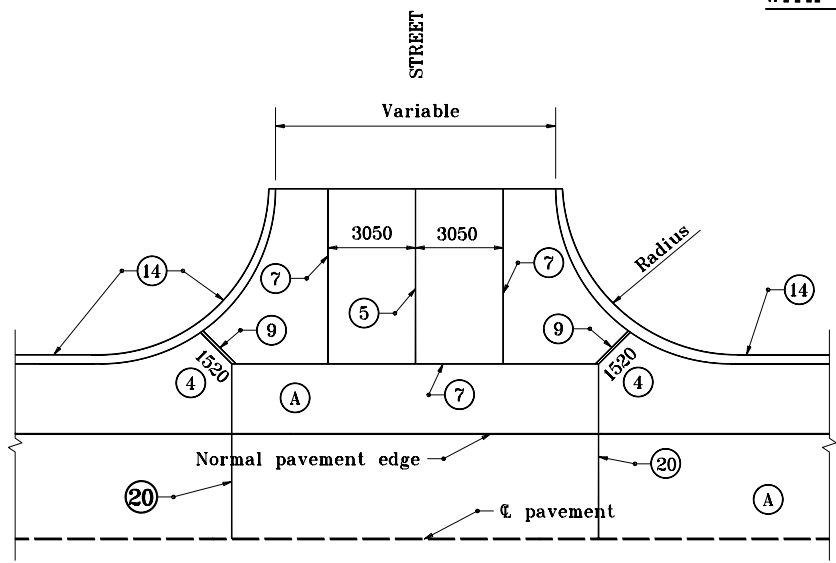
Source Sheet: **MIA**



**ALLEY APPROACH WITH RIGID MAINLINE PAVEMENT**



**STREET OR ALLEY APPROACH WITH FLEXIBLE MAINLINE PAVEMENT**



**STREET APPROACH WITH RIGID MAINLINE PAVEMENT**