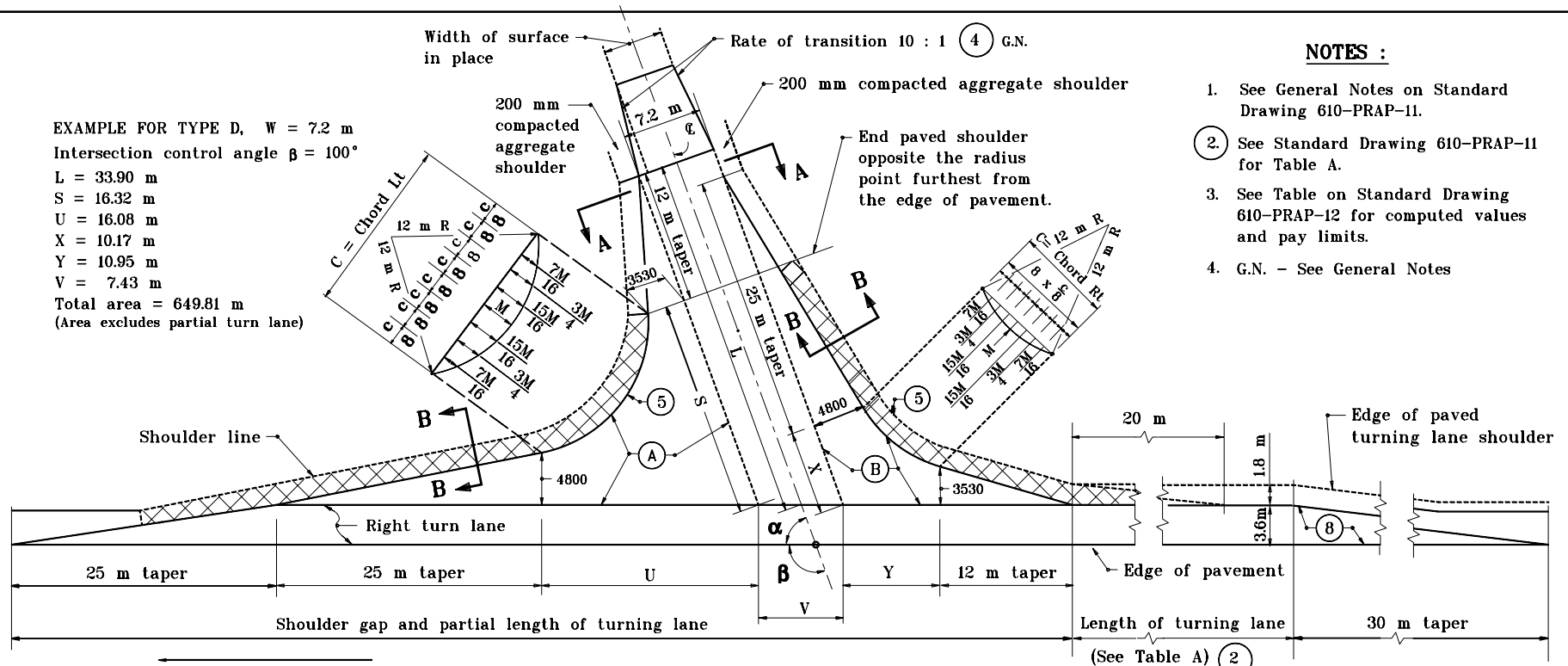


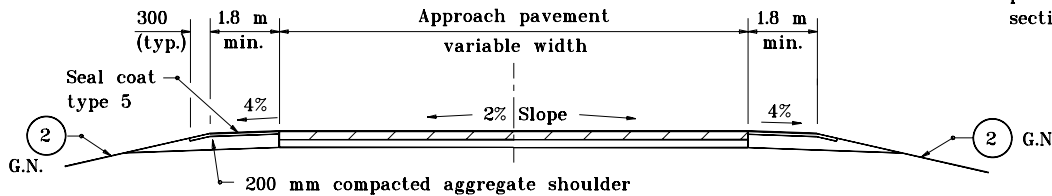
EXAMPLE FOR TYPE D, $W = 7.2$ m
 Intersection control angle $\beta = 100^\circ$
 $L = 33.90$ m
 $S = 16.32$ m
 $U = 16.08$ m
 $X = 10.17$ m
 $Y = 10.95$ m
 $V = 7.43$ m
 Total area = 649.81 m
 (Area excludes partial turn lane)



NOTES :

1. See General Notes on Standard Drawing 610-PRAP-11.
2. See Standard Drawing 610-PRAP-11 for Table A.
3. See Table on Standard Drawing 610-PRAP-12 for computed values and pay limits.
4. G.N. - See General Notes

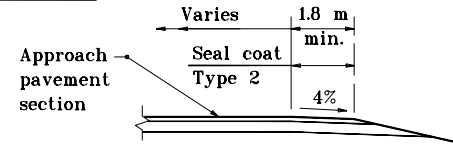
PUBLIC ROAD APPROACH TYPE D



SECTION A-A MINIMUM PAVEMENT SECTION

FOR UP THROUGH 50 TRUCKS PER DAY

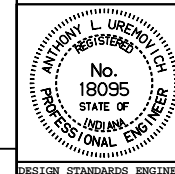
60 kg/m² HMA Surface 9.5 mm over
 300 kg/m² HMA Base 25 mm on
 200 mm compacted aggregate base



SECTION B-B

All dimensions are in mm unless otherwise specified.

INDIANA DEPARTMENT OF TRANSPORTATION
PUBLIC ROAD APPROACH
TYPE D
 SEPTEMBER 1998
 STANDARD DRAWING NO. **610-PRAP-10**



/s/ Anthony L. Uremovich 9-01-98
 DESIGN STANDARDS ENGINEER DATE

/s/ Donald W. Lucas 9-01-98
 CHIEF HIGHWAY ENGINEER DATE

Source Sheet: **M13**

DESIGN STANDARDS ENGINEER