

Q	L	S	U	X	Y	V	Shldr. Gap	Chord		Mid Ordinate		Approach Areas			Turn Lane Part. Area (9)	Q
								Lt.	Rt.	Lt.	Rt.	(A)	(B)	Total		
(o)	m	m	m	m	m	m	m	m	m	m	m	m ²	m ²	m ²	m ²	(o)
110	30.16	16.64	18.71	5.68	10.12	7.78	100.62	19.25	10.27	4.71	1.13	97.39	71.87	389.89	273.26	110
109	29.75	16.29	18.38	5.89	10.28	7.74	100.41	19.12	10.46	4.62	1.18	94.39	73.28	385.26	272.48	109
108	29.34	15.96	18.06	6.10	10.45	7.69	100.21	18.99	10.65	4.54	1.23	91.49	74.72	380.84	271.77	108
107	28.94	15.63	17.75	6.32	10.62	7.65	100.03	18.85	10.84	4.46	1.27	88.69	76.20	376.60	271.09	107
106	28.55	15.31	17.45	6.53	10.79	7.61	99.86	18.71	11.03	4.38	1.32	86.00	77.72	372.56	270.46	106
105	28.17	15.00	17.15	6.75	10.97	7.57	99.70	18.58	11.22	4.29	1.37	83.38	79.26	368.70	269.88	105
104	27.79	14.08	16.86	6.97	11.14	7.54	99.55	18.44	11.41	4.22	1.42	80.85	80.85	365.02	269.36	104
103	27.43	14.39	16.58	7.20	11.33	7.51	99.42	18.30	11.59	4.13	1.47	78.42	82.48	361.52	268.87	103
102	27.06	14.10	16.30	7.42	11.51	7.48	99.30	18.16	11.78	4.05	1.52	76.05	84.15	358.19	268.43	102
101	26.71	13.81	16.03	7.65	11.70	7.45	99.19	18.02	11.97	3.97	1.57	73.78	85.85	355.02	268.04	101
100	26.37	13.53	15.77	7.88	11.89	7.43	99.10	17.87	12.15	3.90	1.62	71.57	87.60	352.02	267.69	100
99	26.02	13.25	15.50	8.12	12.09	7.41	99.01	17.73	12.34	3.82	1.68	69.44	89.40	349.18	267.38	99
98	25.69	12.98	15.26	8.35	12.29	7.39	98.94	17.58	12.52	3.74	1.73	67.37	91.24	346.49	267.11	98
97	25.35	12.71	15.00	8.59	12.49	7.37	98.88	17.43	12.70	3.67	1.79	65.37	93.12	343.95	266.88	97
96	25.03	12.45	14.77	8.84	12.70	7.35	98.83	17.28	12.88	3.59	1.84	63.43	95.06	341.57	266.70	96
95	24.71	12.20	14.53	9.08	12.91	7.34	98.79	17.13	13.06	3.52	1.90	61.56	97.05	339.34	266.56	95
94	24.39	11.94	14.30	9.33	13.12	7.33	98.76	16.98	13.24	3.44	1.95	59.76	99.09	337.25	266.45	94
93	24.08	11.70	14.07	9.58	13.34	7.32	98.74	16.82	13.42	3.37	2.01	58.00	101.18	335.31	266.40	93
92	23.77	11.45	13.84	9.84	13.56	7.32	98.74	16.67	13.60	3.29	2.07	56.29	103.33	333.50	266.36	92
91	23.75	11.21	13.62	10.10	13.79	7.32	98.74	16.51	13.77	3.22	2.13	54.65	105.54	333.94	266.38	91
90	24.08	10.97	13.41	10.36	14.02	7.32	98.76	16.36	13.95	3.15	2.19	53.06	107.81	337.00	266.44	90
89	24.41	10.74	13.20	10.63	14.26	7.32	98.78	16.20	14.12	3.08	2.25	51.51	110.14	340.22	266.54	89
88	24.75	10.51	12.99	10.90	14.50	7.32	98.82	16.04	14.30	3.00	2.32	50.02	112.54	343.58	266.68	88
87	25.09	10.29	12.79	11.80	14.75	7.32	98.87	15.88	14.47	2.94	2.38	48.56	115.00	347.08	266.86	87
86	25.43	10.07	12.59	11.46	15.00	7.33	98.93	15.72	14.64	2.87	2.44	47.16	117.53	350.74	267.08	86
85	25.78	9.85	12.40	11.75	15.25	7.34	99.00	15.55	14.81	2.80	2.51	45.79	120.13	354.54	267.33	85
84	26.14	9.63	12.20	12.04	15.51	7.35	99.08	15.39	14.98	2.73	2.57	44.48	122.81	358.49	267.64	84
83	26.50	9.43	12.02	12.34	15.78	7.37	99.18	15.22	15.15	2.67	2.64	43.20	125.57	362.61	267.98	83
82	26.87	9.21	11.83	12.64	16.06	7.39	99.28	15.06	15.31	2.60	2.70	41.96	128.40	366.89	268.36	82
81	27.24	9.00	11.65	12.94	16.34	7.41	99.40	14.89	15.47	2.54	2.77	40.75	131.32	371.33	268.79	81
80	27.62	8.80	11.47	13.26	16.62	7.43	99.53	14.72	15.64	2.47	2.84	39.59	134.33	375.94	269.26	80
79	28.00	8.60	11.29	13.58	16.91	7.45	99.67	14.55	15.80	2.41	2.91	38.46	137.42	380.73	269.77	79
78	28.40	8.40	11.12	13.90	17.22	7.48	99.82	14.38	15.97	2.34	2.97	37.37	140.61	385.68	270.33	78
77	28.79	8.20	10.95	14.23	17.52	7.51	99.98	14.21	16.12	2.28	3.04	36.30	134.89	390.83	270.93	77
76	29.20	8.00	10.78	14.57	17.83	7.54	100.16	14.03	16.28	2.22	3.12	35.27	147.28	396.16	271.58	76
75	29.62	7.81	10.62	14.92	18.16	7.57	100.35	13.86	16.44	2.16	3.19	34.27	150.77	401.69	272.28	75
74	30.04	7.62	10.45	15.27	18.48	7.61	100.56	13.62	16.60	2.10	3.26	33.30	154.38	407.41	273.02	74
73	30.47	7.43	10.30	15.64	18.82	7.65	100.77	13.51	16.75	2.04	3.33	32.37	158.09	413.34	273.81	73
72	30.91	7.25	10.14	16.00	19.17	7.69	101.00	13.33	16.91	1.98	3.41	31.62	161.93	419.49	274.66	72
71	31.36	7.06	9.99	16.38	19.52	7.74	101.25	13.15	17.06	1.93	3.48	30.57	165.89	425.85	275.56	71
70	31.82	6.88	9.83	16.78	19.88	7.78	101.51	12.97	17.21	1.87	3.55	29.80	169.98	432.44	276.51	70

All dimensions are in mm unless otherwise specified.

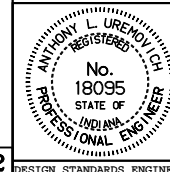
INDIANA DEPARTMENT OF TRANSPORTATION

PUBLIC ROAD APPROACH

TYPE C APPENDIX

APRIL 1995

STANDARD DRAWING NO. **610-PRAP-09**



/s/ Anthony L. Uremovich 4-03-95
DESIGN STANDARDS ENGINEER DATE

/s/ Donald W. Lucas 4-03-95
CHIEF HIGHWAY ENGINEER DATE

Source Sheet: **M12**

DESIGN STANDARDS ENGINEER