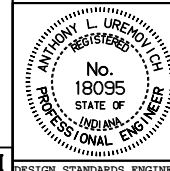


α **	U	S	M	X	Y	N	L						TOTAL APPROACH AREA "A"						HATCHED SHLDR. AREA C.A.B.	SHLDR. AREA	α **	
							TYPE A			TYPE B			TYPE A			TYPE B						
							W=6.0	W=6.6	W=7.2	W=6.0	W=6.6	W=7.2	Z	W=6.0	W=6.6	W=7.2	W=6.0	W=6.6				W=7.2
(m)	(m)	(m)	(m)	(m)	(m)	(m)	(m ²)	(m ²)	(m ²)	(m ²)	(m ²)	(m ²)	(m ²)	(m ²)								
110	16.77	19.88	3.55	5.68	10.12	1.13	33.18	33.29	33.41	33.18	33.29	33.41	3.57	444.13	465.04	419.32	539.33	560.30	561.41	93.98	43.98	110
109	16.38	19.52	3.48	5.89	10.28	1.18	32.76	32.86	32.36	32.76	32.86	32.97	3.54	438.87	459.55	480.35	534.73	555.40	576.20	94.06	42.64	109
108	16.00	19.17	3.11	6.10	10.45	1.23	32.35	32.45	32.54	32.35	32.45	32.54	3.53	433.84	454.21	474.72	530.35	550.74	571.24	94.14	41.39	108
107	15.64	18.82	3.33	6.32	10.62	1.27	31.94	32.03	32.13	31.94	32.03	32.13	3.51	429.01	449.11	469.32	526.22	546.31	566.35	94.14	40.13	107
106	15.27	18.48	3.26	6.53	10.79	1.32	31.55	31.64	31.85	31.55	31.64	31.72	3.49	424.40	444.22	464.14	522.29	542.10	562.03	94.31	38.80	106
105	14.92	18.15	3.19	6.75	10.97	1.37	31.16	31.25	31.32	31.16	31.25	31.32	3.47	420.00	439.54	459.19	518.57	538.12	557.76	94.40	37.71	105
104	14.57	17.83	3.12	6.97	11.14	1.42	30.78	30.86	30.94	30.78	30.86	30.94	3.46	415.79	435.06	454.44	515.07	534.35	553.72	94.40	36.45	104
103	14.23	17.52	3.04	7.20	11.33	1.47	30.42	30.49	30.56	30.42	30.49	30.56	3.44	411.78	430.79	449.87	511.78	530.78	549.89	94.48	35.28	103
102	13.90	17.22	2.97	7.42	11.51	1.52	30.05	30.12	30.18	30.05	30.12	30.18	3.43	407.95	426.70	445.54	508.67	527.43	546.26	94.56	34.11	102
101	13.58	16.91	2.91	7.65	11.70	1.57	29.70	29.76	29.82	29.70	29.76	29.82	3.42	404.31	422.81	441.39	505.77	524.27	542.84	94.56	32.94	101
100	13.26	16.62	2.84	7.88	11.89	1.63	29.35	29.40	29.46	29.35	29.40	29.46	3.40	400.84	419.10	437.41	503.05	521.30	539.62	94.56	31.69	100
99	12.94	16.34	2.77	8.12	12.09	1.68	29.01	29.06	29.11	29.01	29.06	29.11	3.40	397.56	415.57	433.63	500.51	518.52	536.59	94.65	30.35	99
98	12.64	16.06	2.70	8.35	12.29	1.73	28.68	28.72	28.76	28.68	28.72	28.76	3.39	394.45	412.21	430.04	498.17	515.94	533.76	94.65	29.18	98
97	12.34	15.78	2.64	8.59	12.49	1.79	28.38	28.39	28.43	28.35	28.39	28.43	3.38	391.50	409.04	426.61	496.00	513.54	531.12	94.65	28.00	97
96	12.04	15.51	2.57	8.84	12.70	1.84	28.03	28.06	28.10	28.03	28.06	28.09	3.37	388.73	406.03	423.37	494.02	511.33	528.66	94.73	27.09	96
95	11.78	15.25	2.51	9.08	12.91	1.90	27.71	27.74	27.77	27.71	27.74	27.77	3.36	386.11	403.18	420.29	492.21	509.29	526.39	94.73	25.92	95
94	11.46	15.00	2.44	9.33	13.12	1.95	27.40	27.42	27.44	27.40	27.42	27.44	3.36	383.66	400.51	417.38	490.57	507.42	524.29	94.73	24.58	94
93	11.18	14.75	2.38	9.58	13.34	2.01	27.10	27.12	27.13	27.10	27.12	27.13	3.36	381.36	398.00	414.63	489.11	505.74	522.39	94.81	23.41	93
92	10.90	14.50	2.32	9.84	13.56	2.07	26.80	26.81	26.82	26.80	26.81	26.82	3.36	379.23	395.63	412.06	487.82	504.23	520.65	94.81	22.41	92
91	10.63	14.26	2.25	10.10	13.79	2.13	26.51	26.51	26.51	27.12	27.11	27.11	3.35	377.25	393.44	409.64	490.43	506.92	523.41	94.81	23.33	91
90	10.36	14.02	2.19	10.36	14.02	2.19	26.21	26.21	26.21	27.43	27.43	27.43	3.35	375.42	391.40	407.37	493.17	509.90	526.62	94.81	24.50	90
89	10.10	13.79	2.13	10.63	14.26	2.25	25.93	25.92	25.92	27.76	27.76	27.76	3.35	373.75	389.51	405.27	496.08	513.04	530.00	94.81	25.58	89
88	9.84	13.56	2.07	10.90	14.50	2.32	25.65	25.64	25.63	28.08	28.09	28.10	3.36	372.21	387.78	403.33	499.18	516.36	533.57	94.73	26.76	88
87	9.58	13.34	2.01	11.18	14.75	2.38	25.37	25.36	25.34	28.41	28.43	28.45	3.36	370.84	386.20	401.55	502.44	519.86	537.31	94.73	27.93	87
86	9.33	13.12	1.95	11.46	15.00	2.44	25.39	25.41	25.43	28.75	28.77	28.79	3.36	371.40	386.94	402.67	505.67	523.55	541.24	94.73	29.10	86
85	9.08	12.91	1.90	11.78	15.25	2.51	25.73	25.76	25.78	29.10	29.12	29.15	3.36	374.03	389.89	405.79	509.49	527.41	545.36	94.73	30.27	85
84	8.84	12.70	1.84	12.04	15.51	2.57	26.08	26.11	26.14	29.45	29.48	29.51	3.37	376.82	392.93	409.08	513.30	531.47	549.67	94.73	31.44	84
83	8.59	12.49	1.79	12.34	15.78	2.64	26.43	26.46	26.50	29.80	29.84	29.88	3.38	379.79	396.41	412.54	517.30	535.71	554.18	94.73	32.61	83
82	8.35	12.29	1.73	12.64	16.06	2.70	26.78	26.83	26.87	30.17	30.21	30.25	3.39	382.89	399.51	416.17	521.48	540.15	558.87	94.73	33.78	82
81	8.12	12.09	1.68	12.94	16.34	2.77	27.14	27.19	27.24	30.54	30.59	30.64	3.40	386.18	403.04	419.97	528.85	544.79	563.78	94.65	34.95	81
80	7.88	11.89	1.63	13.26	16.62	2.84	27.51	27.57	27.62	30.92	30.97	31.02	3.40	389.82	406.75	423.95	530.42	549.63	568.90	94.65	36.12	80
79	7.65	11.70	1.57	13.58	16.91	2.91	27.89	27.94	28.00	31.36	31.30	31.42	3.42	393.25	410.65	428.12	535.20	554.67	574.22	94.56	37.29	79
78	7.42	11.51	1.52	13.90	17.22	2.97	28.27	28.33	28.40	31.69	31.76	31.82	3.43	397.06	414.72	432.46	540.18	559.93	579.76	94.48	38.54	78
77	7.20	11.33	1.47	14.23	17.52	3.04	28.65	28.72	28.79	32.10	32.17	32.24	3.44	401.04	418.98	437.00	545.79	565.40	585.53	94.48	39.71	77
76	6.97	11.14	1.42	14.57	17.83	3.12	29.05	29.13	29.20	32.50	32.58	32.66	3.46	405.22	423.43	441.75	550.78	571.11	591.52	94.48	40.97	76
75	6.75	10.97	1.37	14.92	18.15	3.19	29.45	29.54	29.62	32.92	33.00	33.09	3.47	409.58	428.07	446.68	556.42	577.04	597.76	94.40	42.22	75
74	6.53	10.79	1.32	15.27	18.48	3.26	29.86	29.95	30.04	33.35	33.44	33.53	3.49	414.14	432.92	451.82	562.29	583.21	604.23	94.31	43.48	74
73	6.32	10.62	1.27	15.64	18.82	3.33	30.28	30.38	30.47	33.79	33.88	33.98	3.51	418.89	437.98	457.18	568.40	589.63	610.95	94.31	44.73	73
72	6.10	10.45	1.23	16.00	19.17	3.41	30.71	30.81	30.91	34.24	34.34	34.44	3.53	423.87	443.25	462.76	574.75	596.29	617.94	94.23	45.99	72
71	5.89	10.28	1.18	16.38	19.52	3.48	31.15	31.25	31.36	34.70	34.80	34.91	3.54	429.05	448.74	468.57	581.36	603.21	625.91	94.14	47.32	71
70	5.68	10.12	1.13	16.77	19.88	3.55	31.60	31.71	31.82	35.16	35.27	35.39	3.57	434.45	454.46	474.60	588.23	610.41	632.73	94.06	48.58	70

All dimensions are in mm unless otherwise specified.

INDIANA DEPARTMENT OF TRANSPORTATION
PUBLIC ROAD APPROACH
TYPE A AND B APPENDIX
 JANUARY 1998

STANDARD DRAWING NO. **610-PRAP-05**



/s/ Anthony L. Uremovich 1-02-98
 DESIGN STANDARDS ENGINEER DATE

/s/ Donald W. Lucas 1-02-98
 CHIEF HIGHWAY ENGINEER DATE