


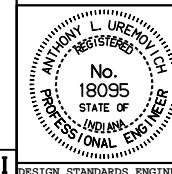
GENERAL NOTES

1. The Type A and B Public Road Approaches are designed to accommodate a WB-15 design vehicle with a 13.7 m turning radius. These approaches shall be used when a right turn lane is not required at a public road serving residential, commercial or light industrial areas.
2. A Type B Public Road Approach will be required when the mainline shoulders are bituminous. A Type A Public Road Approach will be required when the mainline shoulders are earth or aggregate.
3. Curb ramps as shown on Standard Drawings 604-SWCR-01 through -14 shall be required where sidewalks intersect the concrete curb at street or alley approaches.
4. Intersection control angles less than 70 degrees or greater than 110 degrees require a special design using a WB-50 design vehicle with a 10m turning radius.
- ⑤ Embankment slopes built on either side of the approach within the mainline clear zone shall be based on the functional classification of the public road as follows:
 - a) 6:1 for Arterials and high speed (over 70km/hr design speed) Collectors.
 - b) 4:1 for Local Roads and low speed (70km/hr less design speed) Collectors.
6. Cross culverts under the public road approach which cannot be located outside the mainline clear zone shall require a Greated Box End Section at both ends.
- ⑦ The tapered transitions from the new approach to the existing pavement shall be aggregate for existing aggregate pavements. When the existing pavement is bituminous, AREA "B" shall be the same section as the approach and will be included in the pay limits for Bituminous Mixture for Approaches.
- ⑧ The cross hatched  shoulder area indicates the limits where the shoulder is the same as the approach pavement.
9. If the approach is to be constructed of concrete, the details shall be as shown elsewhere in the plans for thickness, joint type and location.
- ⑩ Earth shoulder shall be used with the Typw "A" Public Road Approach. The Type "B" Public Road Approach shall have 150 mm Compacted Aggregate and full approach pavement section shoulders as shown on the Type "B" Approach detail.

All dimensions are in mm unless otherwise specified.

INDIANA DEPARTMENT OF TRANSPORTATION
PUBLIC ROAD APPROACH
TYPE A & B GENERAL NOTES
SEPTEMBER 1995

STANDARD DRAWING NO. **610-PRAP-04**



/s/ Anthony L. Uremovich 9-01-95
DESIGN STANDARDS ENGINEER DATE

/s/ Donald W. Lucas 9-01-95
CHIEF HIGHWAY ENGINEER DATE

Source Sheet: **MI**

DESIGN STANDARDS ENGINEER