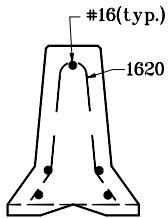
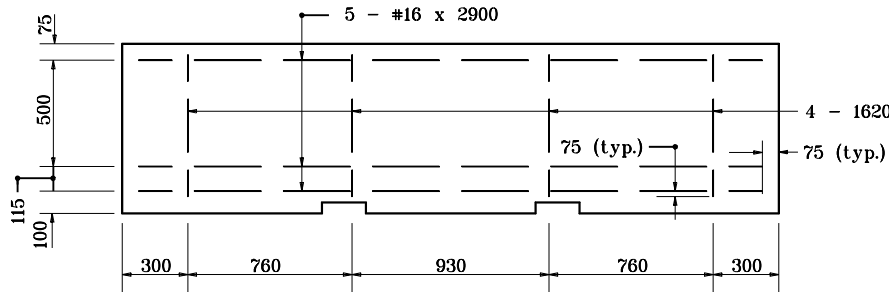


GENERAL NOTES

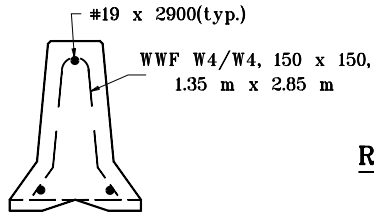
- ① Hex nut may be tack welded to bottom spacer to facilitate installation and removal. Bolts shall be torqued only to tight condition. Clearance between the SI spacer and the ends of the barrier shall permit angular deflection at the joints to permit flare rate 11:1 or flatter.
- ② A C 75 x 9 channel may be substituted for the SI spacer when the outermost projection of the smooth bar hook from the end face of the temporary concrete barrier is less than 90.



END VIEW



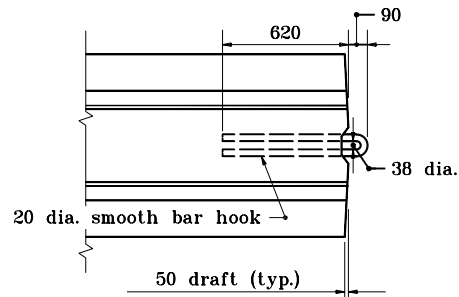
FRONT VIEW



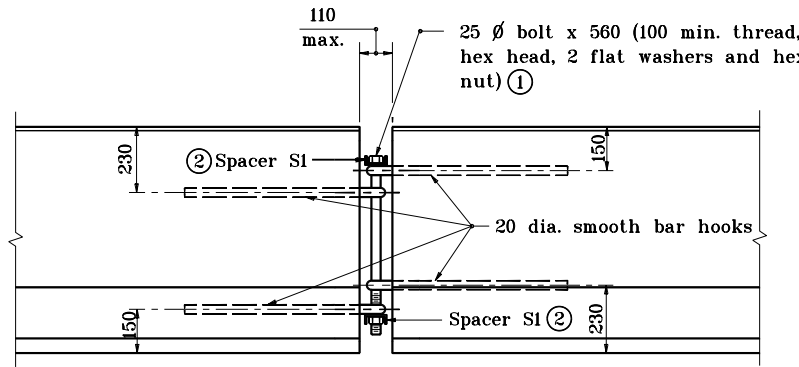
REINFORCEMENT DETAIL

END VIEW

Showing Alternate Reinforcing Method

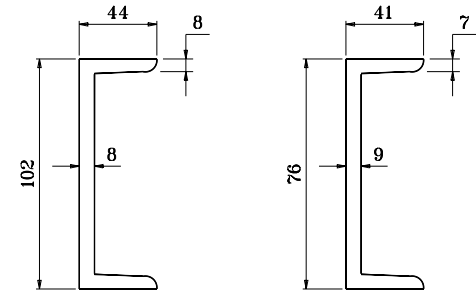


TOP VIEW



FRONT VIEW

CONNECTION DETAIL



C 100 x 11

C 75 x 9

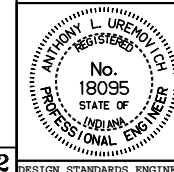
All dimensions are in mm unless otherwise specified.

INDIANA DEPARTMENT OF TRANSPORTATION

TEMPORARY CONCRETE BARRIER

JANUARY 1998

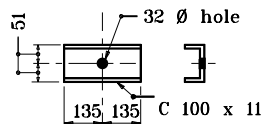
STANDARD DRAWING NO. **602-TCCB-02**



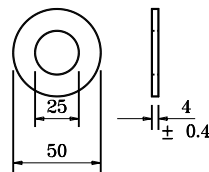
/s/ Anthony L. Uremovich 1-02-98
DESIGN STANDARDS ENGINEER DATE

/s/ Donald W. Lucas 1-02-98
CHIEF HIGHWAY ENGINEER DATE

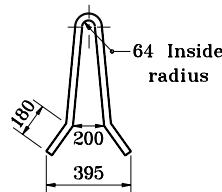
DESIGN STANDARDS ENGINEER



SI SPACER DETAIL ②



WASHER DETAIL



1620 x 1420