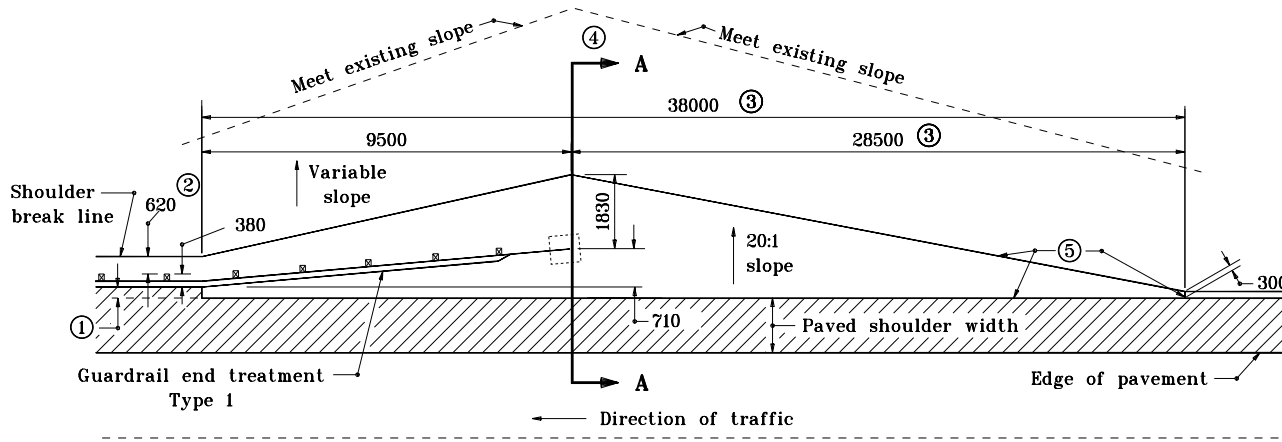


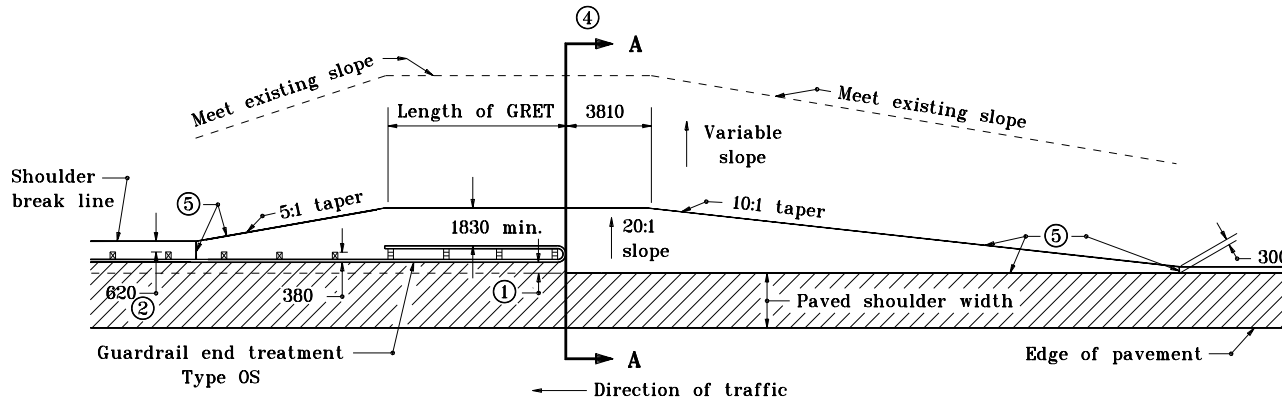
GENERAL NOTES

- ① The required guardrail offset shall be 600 mm unless otherwise specified in the plans. The offset used between the edge of required shoulder and the face of rail shall also be used to establish the berm width at the end of the guardrail end treatment.
- ② This distance may be zero when guard-rail with long posts is specified.
- ③ These dimensions are based on a 610 mm guardrail offset and must be adjusted for other offset distances to maintain a 10:1 taper.
- ④ Grading profiles at Section A-A for types OS and type I guardrail end treatments are shown on Standard Drawings 601-GRET-08, -09 and 10.
- ⑤ Limits of compacted aggregate.



PLAN VIEW

GRADING DETAIL FOR GUARDRAIL END TREATMENT TYPE I



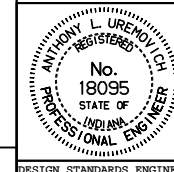
PLAN VIEW

GRADING DETAIL FOR GUARDRAIL END TREATMENT TYPE OS

All dimensions are in mm unless otherwise specified.

INDIANA DEPARTMENT OF TRANSPORTATION
**GRADING AT GUARDRAIL
 END TREATMENTS**
 JANUARY 1998

STANDARD DRAWING NO. **601-GRET-06**



/s/ Anthony L. Uremovich 1-02-98
 DESIGN STANDARDS ENGINEER DATE

/s/ Donald W. Lucas 1-02-98
 CHIEF HIGHWAY ENGINEER DATE