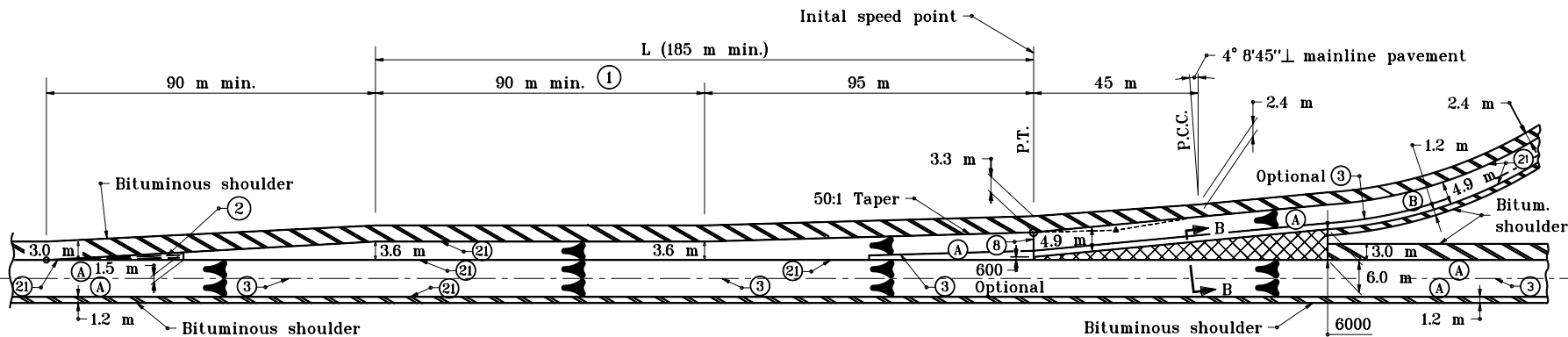


GENERAL NOTES

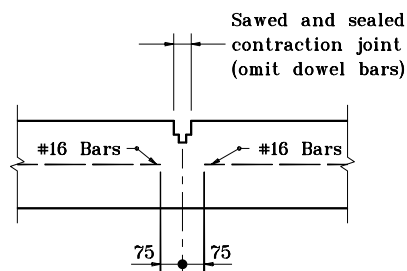
- ① Required additional length of L above the 185 m minimum shall be added to the length of this parallel lane segment. (Example: If required L = 220 m, then this parallel lane segment length = 125 m). See tables on Standard Drawing 401-REBS-04.
- ② Ear construction type A: 2 lines of #16 bars required (Est. mass = 116 kg). Transverse sawed and sealed joint, in line with pavement contraction joint, shall extend through ear construction. The #16 bars shall be discontinued at such joints. See Detail B-B.
- 3. See Standard Drawing 401-REBS-03 for Section B-B.

CURVE DATA

R = 873.188 m
 $\Delta = 3^{\circ}00'00''$
 T = 22.867 m
 L = 45.720 m
 E = 0.299 m



ENTRANCE



DETAIL B-B

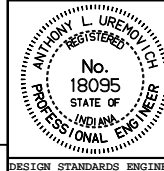
LEGEND

- (A) Pavement type and thickness as specified for the mainline.
- (B) Pavement type and thickness as specified for ramps.
- (3) Longitudinal Joint (Optional where indicated)
- (21) Longitudinal Construction Joint
- Bituminous Shoulder (Thickness of mainline pavement)
- Bituminous shoulder (Thickness as specified on Typical Sections)

All dimensions are in mm unless otherwise specified.

INDIANA DEPARTMENT OF TRANSPORTATION
**RAMP ENTRANCE TERMINAL
 WITH BITUMINOUS SHOULDERS**
 SEPTEMBER 1997

STANDARD DRAWING NO. **401-REBS-01**



/s/ Anthony L. Uremovich 9-01-97
 DESIGN STANDARDS ENGINEER DATE

/s/ Donald W. Lucas 9-01-97
 CHIEF HIGHWAY ENGINEER DATE