

INDEX							
DRAWING NUMBER	SECTION	STRUCTURE			DRAWING NUMBER	SUBJECT	BRIDGE CONTRACT NO.
		NO.	TYPL.	SPAN			
1						Index and Title Sheet	
2						1 Sheet Road Plan & Profile	
3	K	3252	R.C. Girder	1@32', 5k. 45'R.	Barren Creek	228+20	1874
4						C1 Layout	
5						C2 Layout-Channel Change	
6						C3 General Plan	
7						C4 Substructure Details	
8						C5 Substructure Details	
9						Br. Std. 1033-A Superstructure Details	
10						A Concrete Handrail Details (Rev. 9-1-37)	
11						1 Sheet Summary	
12						35 Sheets Cross Section	
13						Br. Std. K1 C-8-FS Section (Oct. 31, 1939)	
14						Std. Miscell. Road Stds.-Sheet A (Oct. 1, 1937)	
15						B (Rev. 8-29-39)	
16						D (Rev. 2-27-39)	
17						Br. Std. Z Detour Signs-Sheet A (Rev. 10-10-39)	
18						B (Rev. 7-17-39)	
19						Z	
NOTE-CONTINUED FROM TITLE SHEET FOR PROJECT 21-G-3249							
20	K	3251	R.C. Girder	1@32', 5k. 159'R.	Back Creek	60+10.0	1977
21						C1 Index & Title Sheet-Str. 26-K-3251 & 67-S-785-A	
22						C2 Layout	
23						C3 General Plan	
24						1317 Substructure Details	
25						1259 Superstructure Details	
26						11 Sheet Cross Sections	
27	S	785-A	Reinforced Concrete Truss	1@124'	Lumberlost Creek	137+16	
28						R1 General Plan	
29						R2 Details & Bill of Materials	
30						1 Sheet Summary-Strs. 21-G-3249, 26-K-3251 & 67-S-785-A	
31						Br. Std. A Concrete Handrail Details (Rev. 9-1-37)	
32						Br. Std. D Six Inch Rdwy. Drain Details (Oct. 15, 1937)	
33						Br. Std. K2 C-11-FS Section (Rev. 5-23-40)	
34						Std. Misc. Rd. Stds.-Sheet A (Rev. 3-25-40)	
35						B (Rev. 2-5-40)	
36						D (Rev. 2-27-39)	
37						Br. Std. S2 Special Filling Material (June 12, 1939)	
38						Br. Std. Z Detour Signs-Sheet A (Rev. 10-10-39)	
39						B (Rev. 7-17-39)	
40						Z	

STATE OF INDIANA  
STATE HIGHWAY COMMISSION

# BRIDGE PLANS

## FOR SPANS OVER 20 FEET

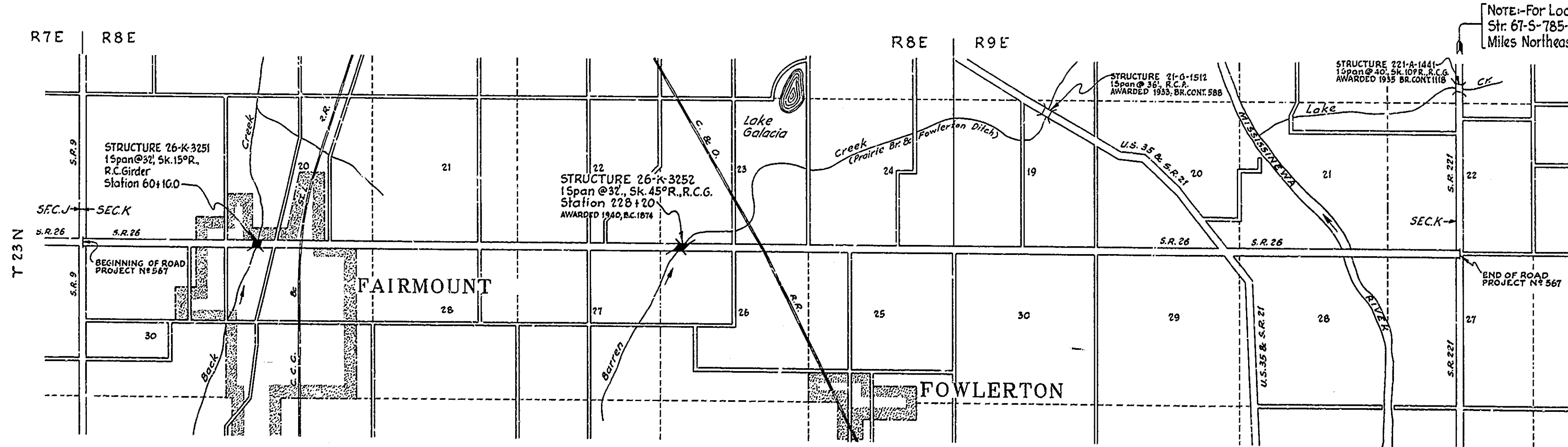
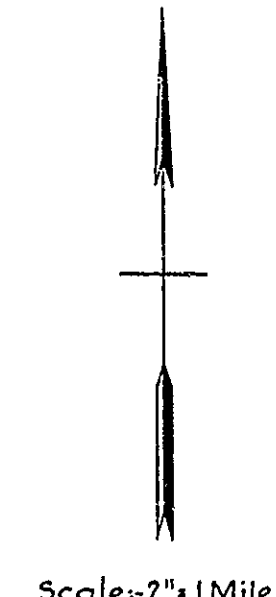
### ON

## STATE ROAD NO. 26 SECTION K

LAFAYETTE-PORTLAND ROAD  
STRUCTURE 26-K-3252 IS LOCATED APPROX. 2.2 MILES EAST OF THE TOWN OF FAIRMOUNT, ON THE EAST-WEST SECTION LINE (S.R. 26) BETWEEN SECTIONS 23 & 26-T 23N-R8E, ALL IN GRANT COUNTY.

STRUCTURE 26-K-3251 IS LOCATED ON S.R. 26 (NORTH BOUNDARY SECTION 29) APPROX. 1034' EAST OF THE NORTHWEST CORNER OF SECTION 29, ALL IN T23N-R8E IN GRANT COUNTY.

Replaced by C7-5-4-1-3



NOTE-For Location of Str. 67-S-785-A, Approx. 40 Miles Northeast, see Sheet #18

FOR STRUCTURE 26-K-3251 & 67-S-785-A  
STATE HIGHWAY COMMISSION STANDARD  
BRIDGE SPECIFICATIONS DATED NOVEMBER 1939  
TO BE USED WITH THESE PLANS.

FOR STRUCTURE 26-K-3252  
STATE HIGHWAY COMMISSION STANDARD  
BRIDGE SPECIFICATIONS DATED SEPTEMBER 1936  
TO BE USED WITH THESE PLANS.

FOR STRUCTURE 26-K-3251 & 67-S-785-A  
APPROVED AND ADOPTED MAY 16, 1940  
BY STATE HIGHWAY COMMISSION OF INDIANA

*J. A. Dicus*  
CHAIRMAN STATE HIGHWAY COMMISSION OF INDIANA

APPROVED MAY 16, 1940

*m. Keefe*  
CHIEF ENGINEER STATE HIGHWAY COMMISSION OF INDIANA

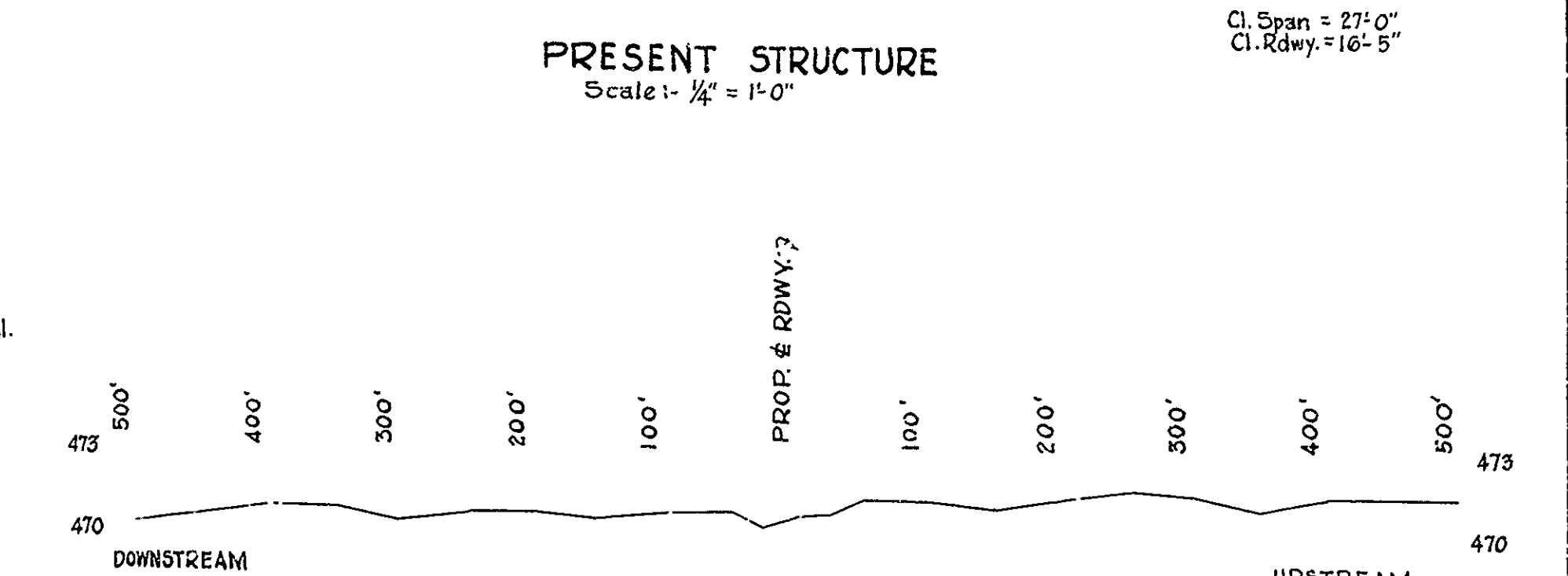
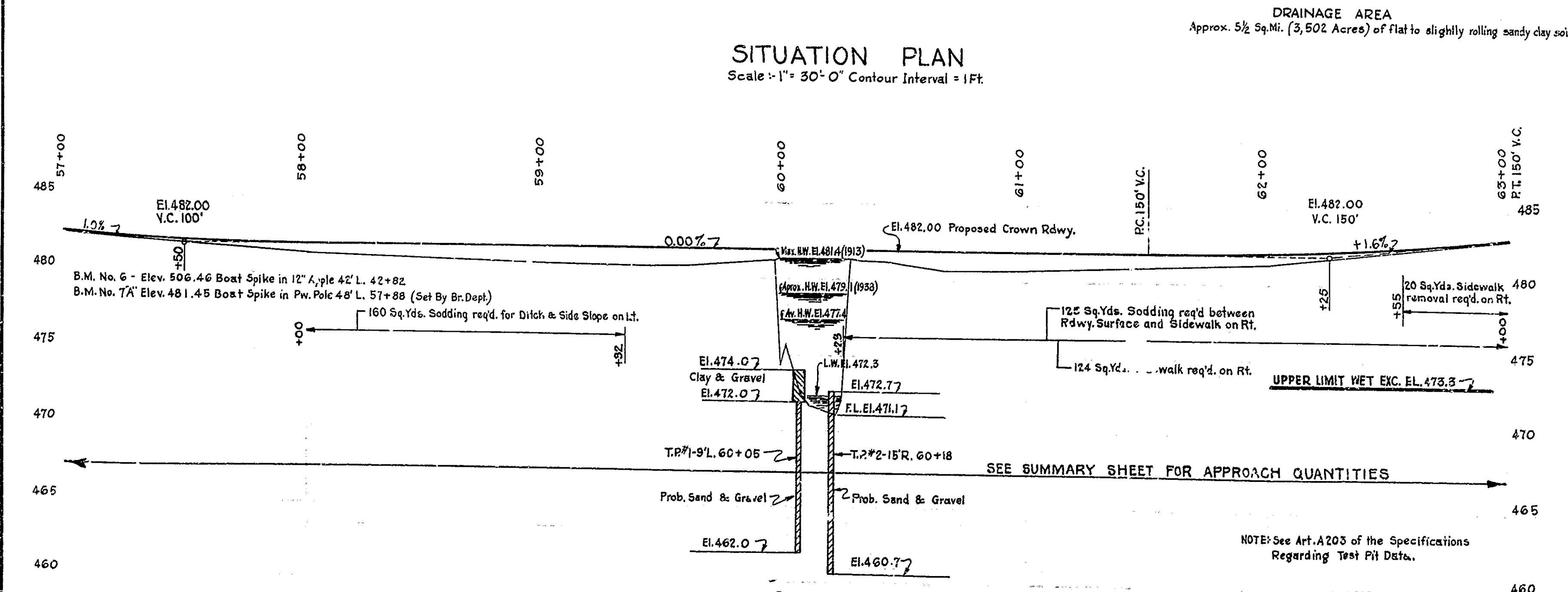
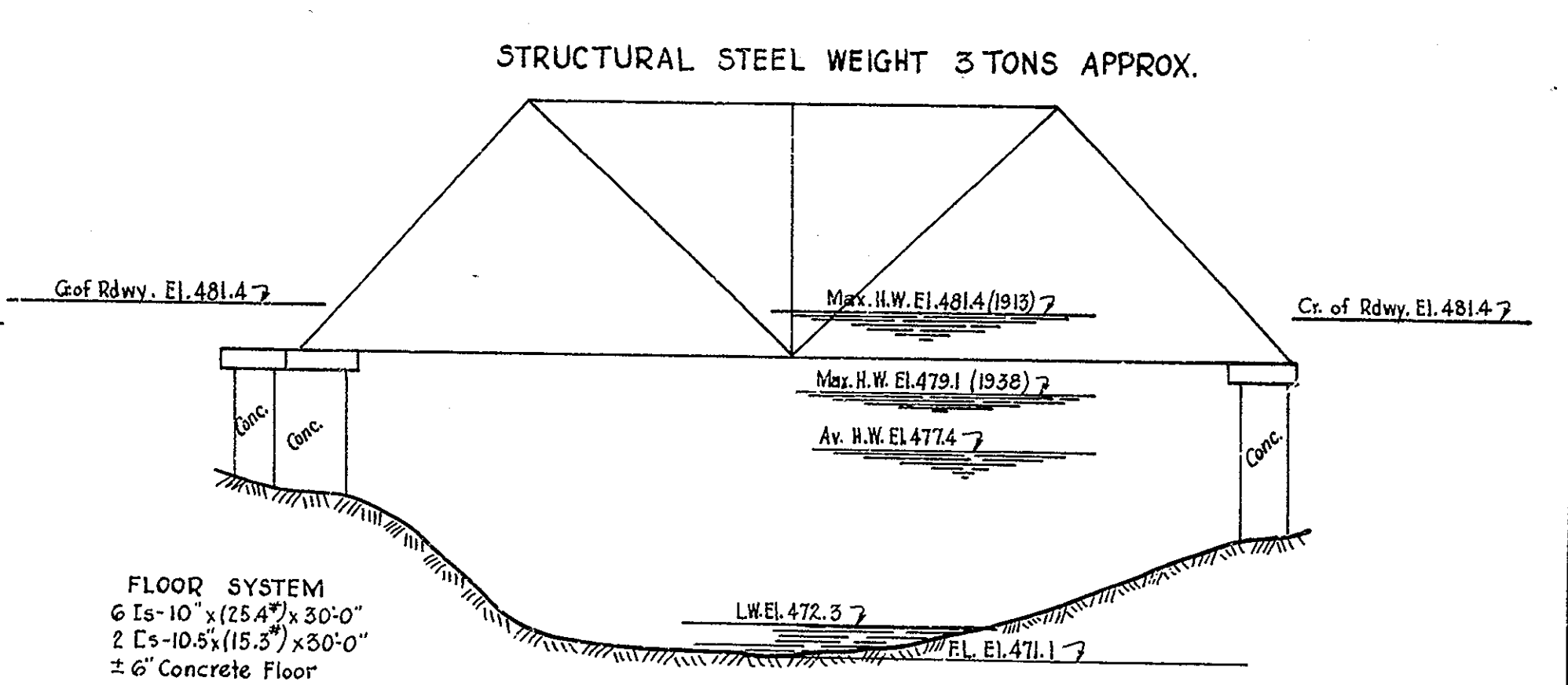
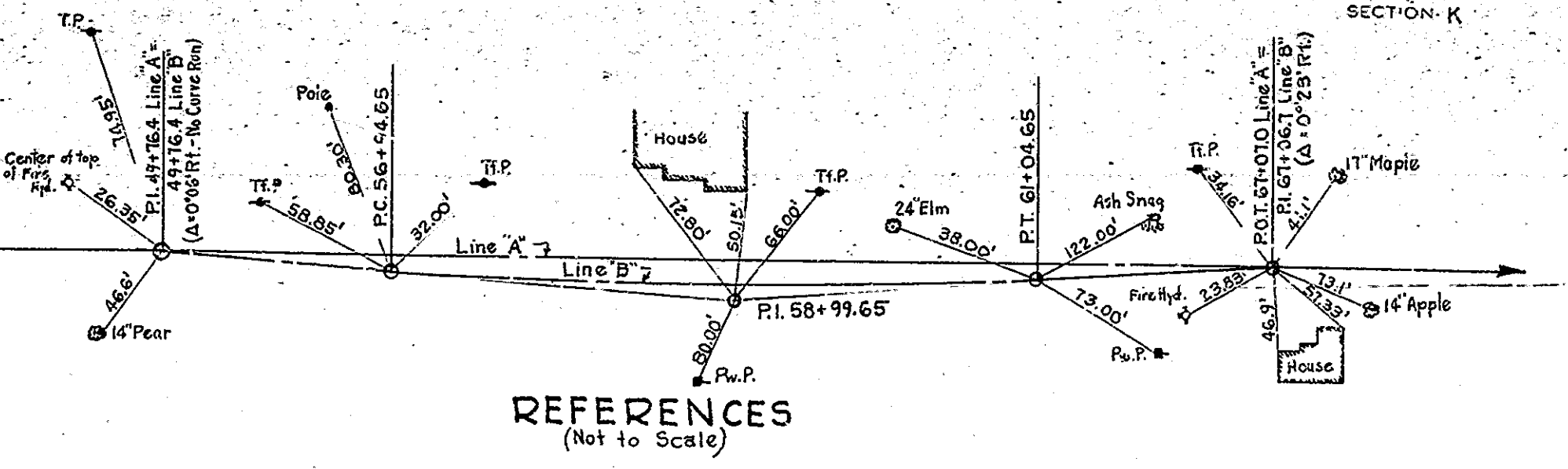
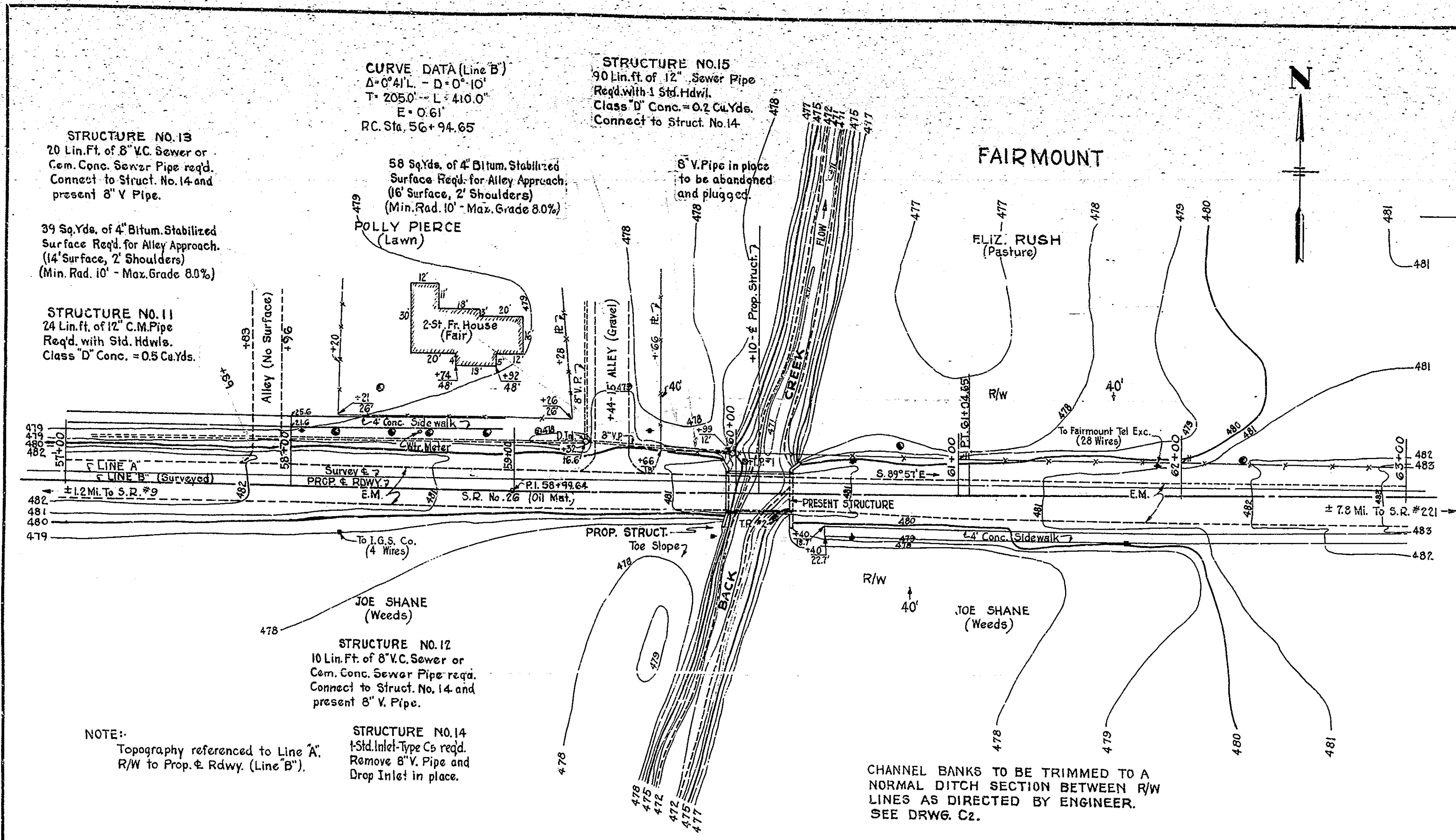
FOR STRUCTURE 26-K-3252  
APPROVED AND ADOPTED NOVEMBER 22, 1939  
BY STATE HIGHWAY COMMISSION OF INDIANA

*J. A. Dicus*  
CHAIRMAN STATE HIGHWAY COMMISSION OF INDIANA

APPROVED NOVEMBER 22, 1939

*m. Keefe*  
CHIEF ENGINEER STATE HIGHWAY COMMISSION OF INDIANA

NO.	STATE	YEAR	SHEET NO.	TOTAL SHEETS
7	IND.	26	1940	12 28



LAYOUT  
**REINFORCED CONCRETE BRIDGE**  
 1 SPAN @ 32'-0" SKEW 15° (R). 38'-0" ROADWAY  
 OVER BACK CREEK ON STATE ROAD-26-K  
**STATE HIGHWAY COMMISSION OF INDIANA**  
**GRANT COUNTY**

SCALE: AS NOTED. MAY 27 1940  
 RECOMMENDED FOR APPROVAL: [Signature]  
 PROJECT: 26 STATION: 60+10  
 SECTION: K STRUCTURE NO. 3251  
 DRAWING: C-1 OF 2 BRIDGE CONTRACT NO. 1977

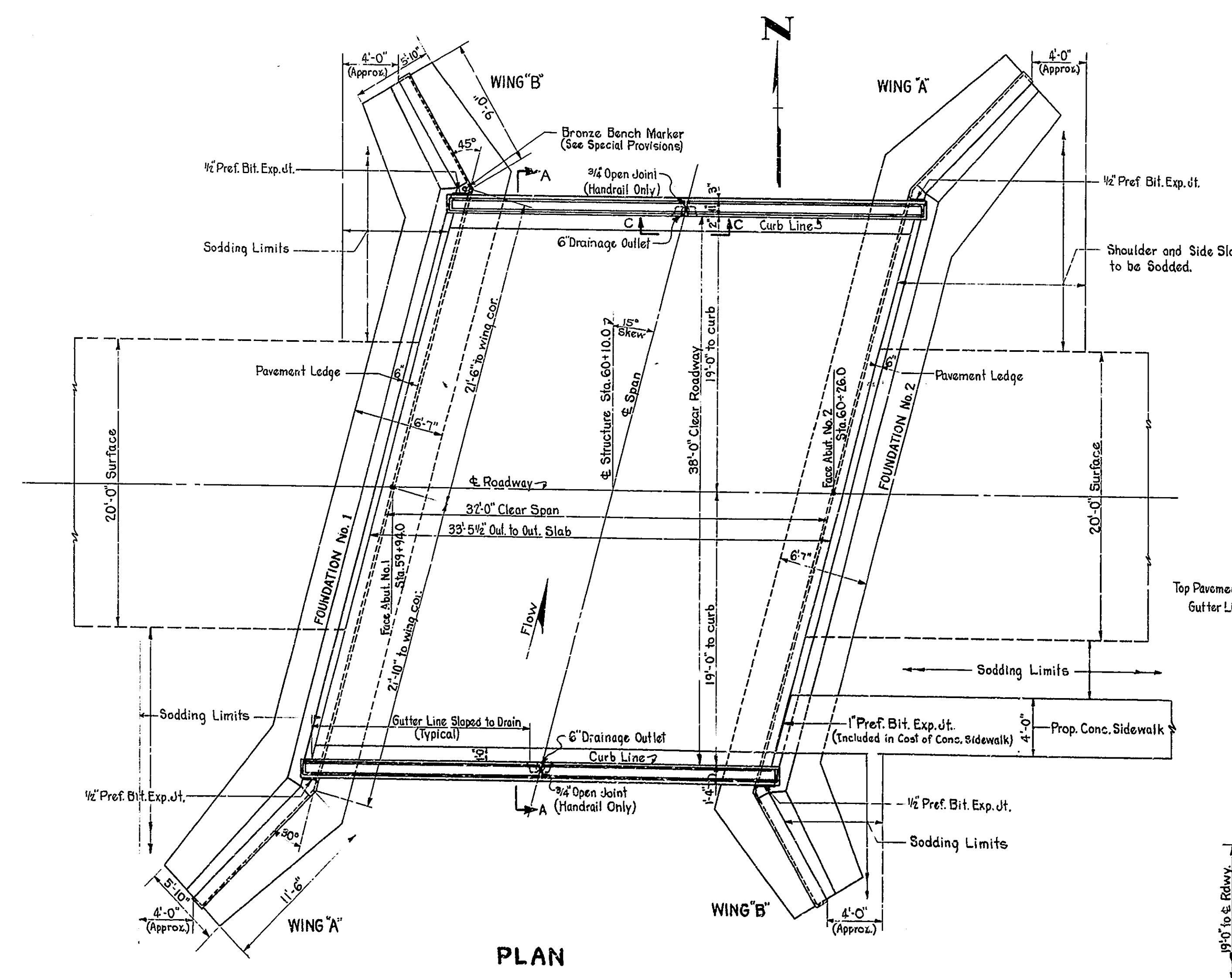
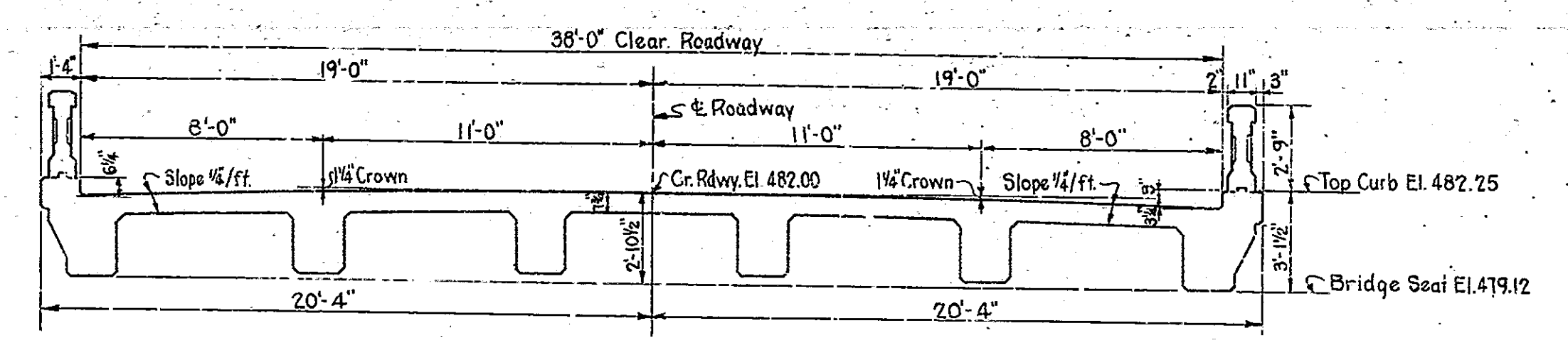
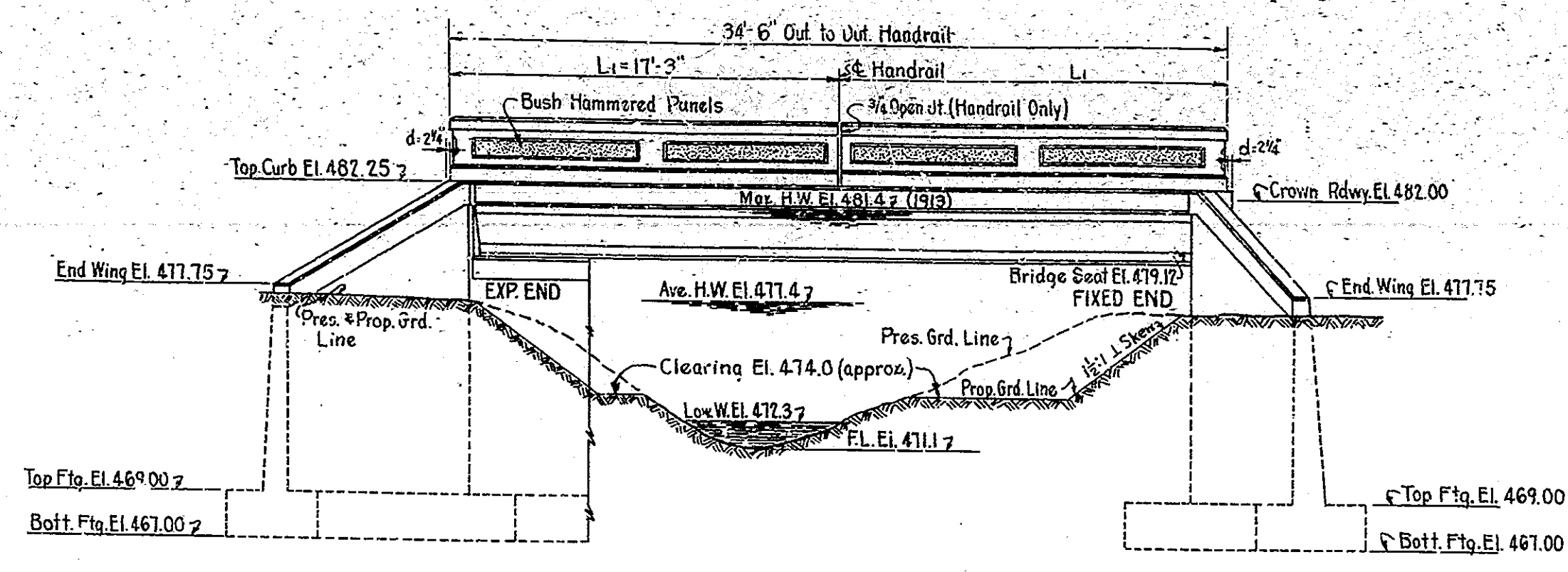
DESIGNED BY: [Name]  
 DRAWN BY: [Name]  
 CHECKED BY: [Name]

NOTE: Field Notes - Book Br. # 425 pp. 49 - 69



BRIDGES OVER 20' SPAN					
FED. ROAD DIST. NO.	STATE	PROJECT NO.	SHEET NO.	TOTAL SHEETS	SCALE
7	IND.	26	1940	13	28

SECTION - K



**GENERAL NOTES**

Depth of footings to be extended if found necessary. See Art. B 202 of Specifications. Reinforcing steel covering shall be 1" in floor slabs, 3" in footings, and 2" in all other parts unless noted.

All dimensions on details and bending diagrams for reinforcing bars are measured on centerlines of bars.

Concrete in footings, wingwalls, and abutments to be Class "E". Concrete in superstructure, including handrail, to be Class "D".

Waterproof wingwalls and abutments in accordance with Specifications. Bevel forms 1/4" under copings; and chamfer exposed edges 3/4" unless noted.

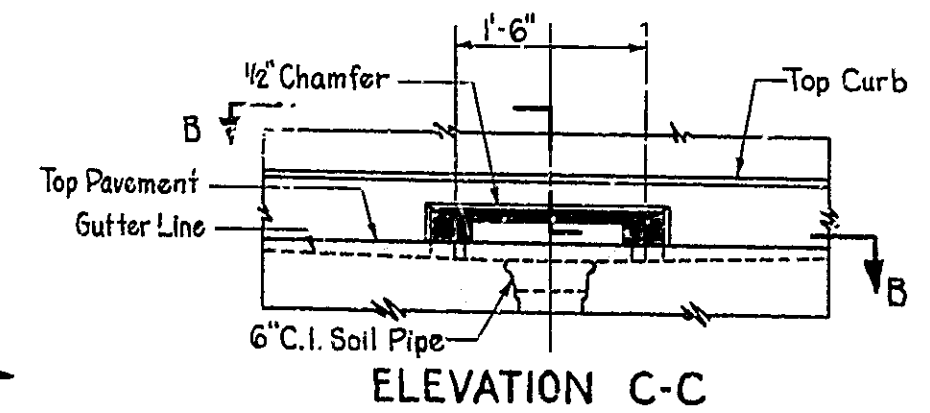
Two 6" Drainage Outlets to be placed as shown on Drawing C2. Wings to be rip-rapped.

Outlet ends of drains thru structure to project 3'. Cut or burn off inlet ends flush with concrete.

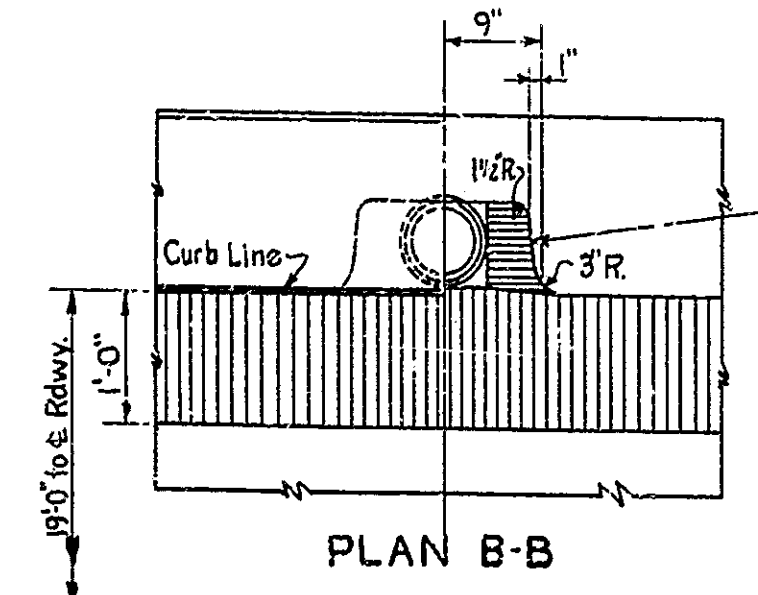
See Special Provisions for items included in this contract.

**STANDARD DRAWINGS**  
 Superstructure: Use Standard Superstructure Details 32'-0" Span R.C. Girder Sk. 15° Rt., 38'-0" Roadway, Drawing Std. No. 1259 dated May 21, 1940.  
 Substructure: Use Standard Substructure Details H-15'-0", S-7'-0", without piles, Drawing Std. No. 1311 dated May 21, 1940.  
 Use Concrete Handrail Details, BRIDGE STANDARD 'A' Rev. Sept. 1, 1937.

NOTE: For placing Special Filling Material, see BRIDGE STANDARD 'S2'.



**STANDARD C-11-FS SECTION**  
 Except shoulder width and side slope on left from Sta. 51+00 to Sta. 59+35 and slope of shoulder on right from Sta. 60+22 to Sta. 63+00. See Cross-sections on Sheet No. 16 Construct 2'-3" Courses.



A removable type of form, acceptable to the Engineer and which shall insure removal without damage to concrete, shall be used in the construction of Drain Box. If sheet metal is used it shall be adequately strutted. If timber is used it shall be treated to prevent swelling.

**DRAINAGE OUTLET DETAILS**  
 Scale: 3/4" = 1'-0"  
 For Section thru Drain see Superstructure Details

**GENERAL PLAN**  
**REINFORCED CONCRETE BRIDGE**  
 1 SPAN @ 32'-0" SKEW 15° RT. 38'-0" ROADWAY  
 OVER BACK CREEK ON STATE ROAD: 26-K  
**STATE HIGHWAY COMMISSION OF INDIANA**  
 GRANT COUNTY

SCALE: 3/16" = 1'-0" UNLESS NOTED  
 RECOMMENDED FOR APPROVAL: [Signature]  
 PROJECT: 26 STATION: 60+10.0  
 SECTION: K STRUCTURE NO. 3251  
 DRAWING: C-2 OF 2  
 MAY 27, 1940  
 BRIDGE CONTRACT NO. 1977

END STR

DESIGNED: W.M.S. 4-15-40  
 DRAWN: W.M.S. 4-15-40  
 CHECKED: H.M.A. 4-20-40  
 CIVIL: J.M. 4-11-40  
 SURVEY: L.H. 5-1-40