

BRIDGES OVER 20' SPAN			
YEAR	NO.	DATE	SPAN
1942	4	490(1)	1942
1942	1	490(2)	1942
1942	1	490(1)	1942
1942	1	490(2)	1942

INDEX			
SHEET NO.	SHEET DESIGNATION	PROJECT	SUBJECT
1	ONE SHEET	F-490(1) 3630 STEELTRUSS 1@125 TURMAN CR 195+37 2694	INDEX & TITLE SHEET
2	ONE SHEET		ROAD PLAN & PROFILE
3	S1 (STRUCTURE 154-A-3636)		LAYOUT
4	S2		GENERAL PLAN
5	S3		DETAILS - ABUTMENT N°1
6	S4		DETAILS - ABUTMENT N°2
7	S5		DETAILS - ABUTMENTS N°1 & N°2
8	S6		DETAILS - ABUTMENTS N°1 & N°2
9	S7		FOOTING PLAN - SUBSTR. BILLS OF MATLS & BENDING DIAGS
10	S8		SCRF. EDS & REQUIRED LIST
11	DRWG N°1 - STD N°1556		ERECTION PLAN & DESIGN DATA
12	DRWG N°2 - STD N°1556		TRUSS DETAILS
13	DRWG N°3 - STD N°1556		TRUSS DETAILS
14	DRWG N°4 - STD N°1556		FLOOR BEAM & STRINGER DETAILS
15	DRWG N°5 - STD N°1556		RACING & SHOE DETAILS
16	DRWG N°6 - STD N°1556		GUARD RAILS
17	DRWG N°7 - STD N°1556		EXPANSION JOINTS
18	DRWG N°8 - STD N°1556		BILL OF MATERIALS BY SHIPPING PIECES
19	DRWG N°9 - STD N°1556		FLOOR DETAILS & BILL OF MATERIALS
20	DRWG N°10 - STD N°1556		FLOOR DETAILS
21	BRIDGE STD. B3		STANDARD CONCRETE HANDRAIL (DETAILS TYPE B) (MAR. 20 1942)
22	BRIDGE STD. C		STANDARD MISCELLANEOUS DETAILS (REV. G-1-45)
23	ONE SHEET		SUMMARY
24-29	SIX SHEETS		CROSS SECTIONS
30	BRIDGE STD. D-11-GU		STANDARD PAVEMENT SECTION (NOV. 1 1944)
31	ROAD STD. SHEET C		STANDARD PAVEMENT JOINTS (REV. 9-30-44)
32	ROAD STD. SHEET SPGR		STANDARD FLEXIBLE STEEL PLATE GUARD RAIL (LAN. 1938)
33	ROAD STD.		STANDARDS FOR SUPER-ELEVATION & WIDENING OF CURVES (SEPT. 1932)
34	BRIDGE STD. G2		STANDARD THICKENED PAVEMENT DETAILS (REV. 7-1-44)
35	BRIDGE STD. H5		TYP. DETAILS OF THICK PAVEMENT & LOC. TOE SLOPE (REV. 10-1-44)
36	BRIDGE STD. M1		STANDARD MISCELLANEOUS APPROACH DETAILS (REV. 10-1-44)
37	BRIDGE STD. M2		STANDARD MISCELLANEOUS APPROACH DETAILS (REV. 10-1-44)
38	BRIDGE STD. S1		TYPICAL DETAILS FOR PLACING SPECIAL FILLING MATERIAL (JUNE 15 1939)
39	BRIDGE STD. T SHEET A		STANDARD TEMPORARY BRIDGE (REV. 3-26-43)
40	BRIDGE STD. T SHEET B		STANDARD TEMPORARY BRIDGE (REV. 11-13-39)
41	BRIDGE STD. Z SHEET A		STANDARD DETOUR SIGNS (REV. 12-10-40)
42	BRIDGE STD. Z SHEET B		STANDARD DETOUR SIGNS (REV. 3-26-43)

STATE OF INDIANA  
STATE HIGHWAY COMMISSION

BRIDGE PLANS

FOR SPANS OVER 20 FEET

ON  
STATE ROAD NO. 154 SECTIONS A & B

F PROJECTS NO. 490 (1) (1946)  
NO. 490 (2) (1946)

HUTSONVILLE ILL. - SULLIVAN IND. ROAD

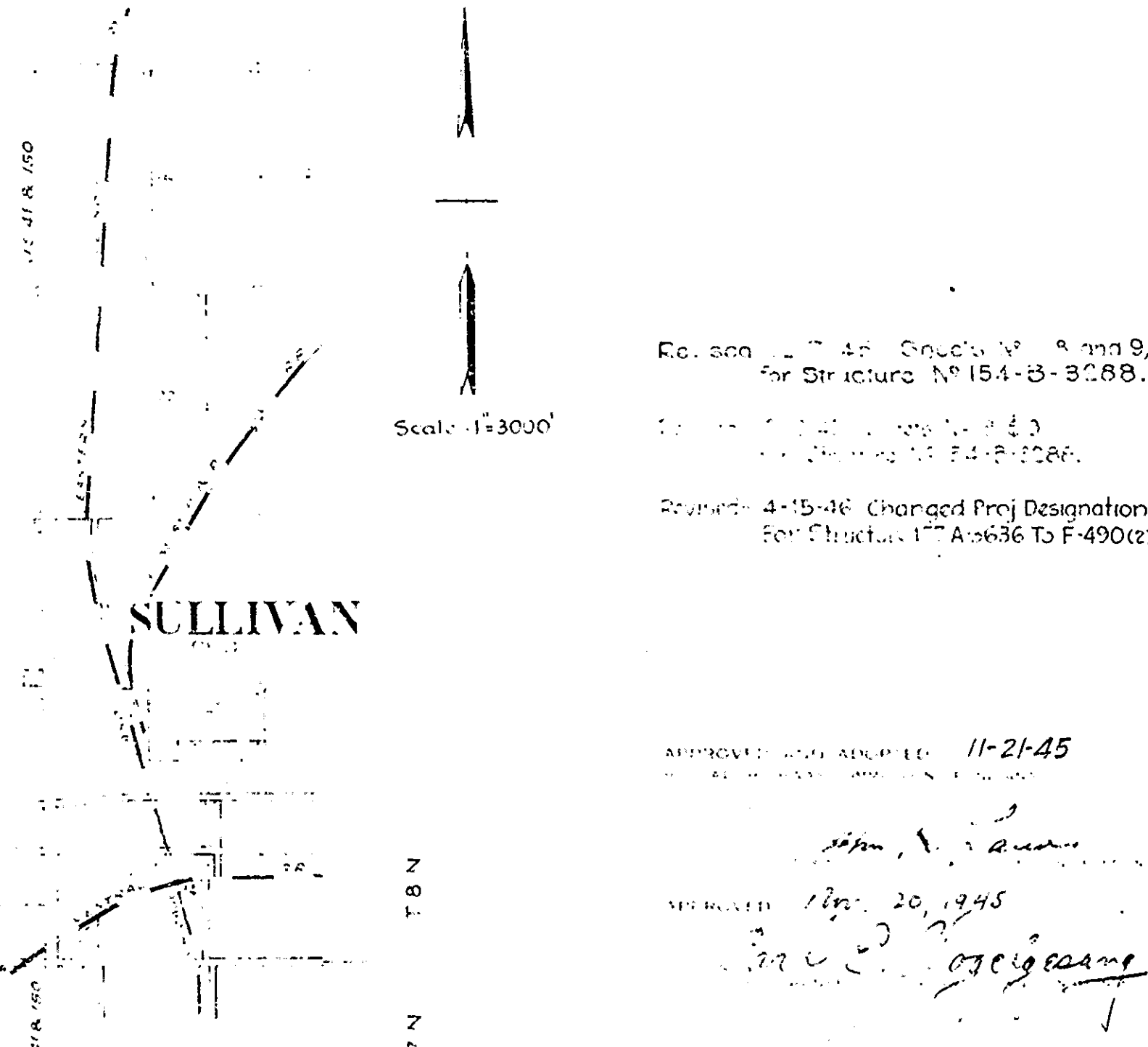
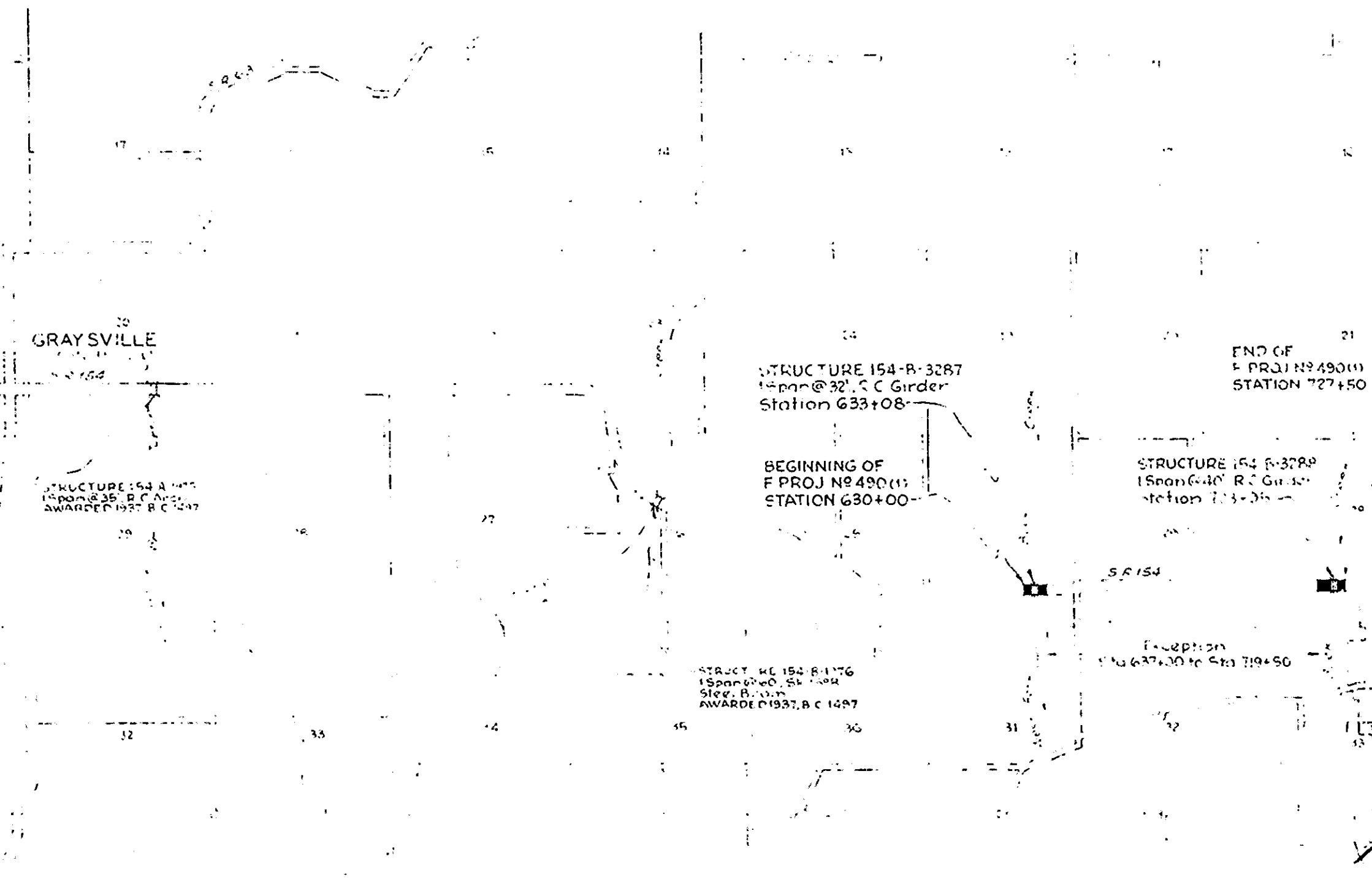
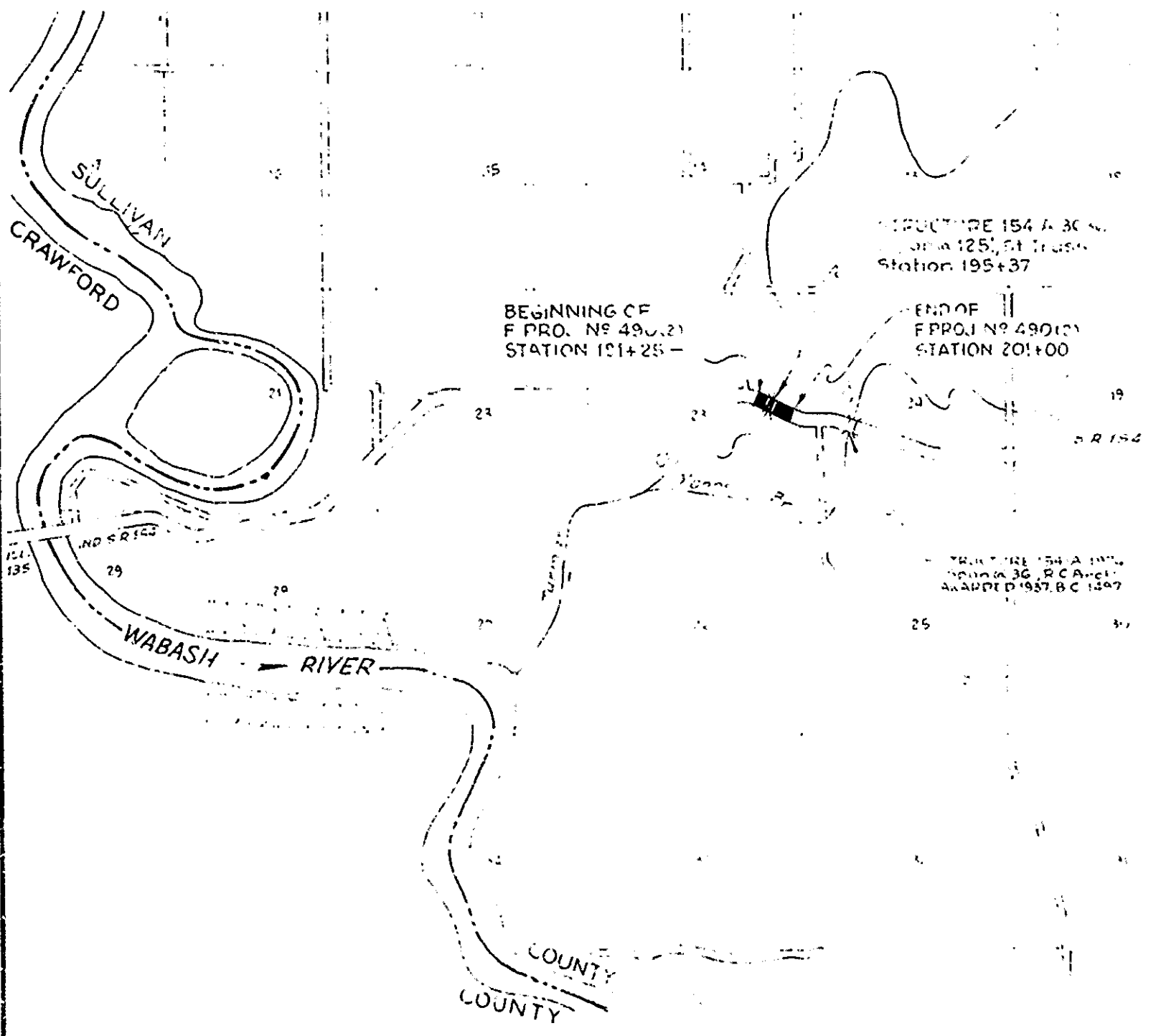
DESCRIPTION OF F PROJECT NO. 490(1) (1946) - BEGINNING AT A POINT ON S.R. 154 APPROX. 1600' WEST OF THE EAST LINE OF SECTION 30 AND EXTENDING EAST A DISTANCE OF APPROX. 975' TO A POINT ON S.R. 154 APPROX. 2660' EAST OF THE WEST LINE OF SECTION 28, ALL IN SECTIONS 30, 29 & 28 - T8N - R9W, SULLIVAN COUNTY.

NET LENGTH = 0.284 MI	ROADWAY LENGTH = 0.126 MI	BRIDGE LENGTH = 0.006 MI	MAX. GRADE = 3.28%
STRUCTURE 154-B-3287	0.126 MI	0.006 MI	0.132 MI
STRUCTURE 154-B-3288	0.143 MI	0.008 MI	0.151 MI

DESCRIPTION OF F PROJECT NO. 490(2) (1946) - BEGINNING AT A POINT ON S.R. 154 APPROX. 1243' NORTHWEST OF THE EAST LINE OF SECTION 23 AND EXTENDING SOUTHEAST A DISTANCE OF APPROX. 975' TO A POINT ON S.R. 154 APPROX. 2660' NORTHWEST OF THE EAST LINE OF SECTION 23, ALL IN T8N - R11W, SULLIVAN COUNTY.

ROADWAY LENGTH = 0.162 MI	BRIDGE LENGTH = 0.023 MI	TOTAL LENGTH = 0.185 MI	MAX. GRADE = 2.025%
STRUCTURE 154-B-3287	0.162 MI	0.023 MI	0.185 MI
STRUCTURE 154-B-3288	0.143 MI	0.008 MI	0.151 MI

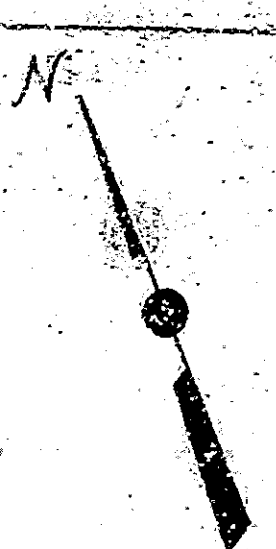
INDEX			
SHEET NO.	SHEET DESIGNATION	PROJECT	SUBJECT
1	ONE SHEET	F-490(1) 3287 R C GIRDER 1@32	INDEX & TITLE SHEET
2	ONE SHEET		ROAD PLAN & PROFILE
3	C1 (STRUCTURE 154-B-3287)		LAYOUT
4	C2		GENERAL PLAN
5	STD N°909		SUBSTRUCTURE DETAILS
6	STD N°1026A		SUBSTRUCTURE DETAILS
7	ONE SHEET		CROSS SECTIONS
8	ONE SHEET		ROAD PLAN & PROFILE
9	C1 (STRUCTURE 154-B-3288)		LAYOUT
10	C2		GENERAL PLAN
11	STD N°910		SUBSTRUCTURE DETAILS
12	STD N°1040-A		SUBSTRUCTURE DETAILS
13	ONE SHEET		CROSS SECTIONS
14	ONE SHEET		SUMMARY (STRS. 3287 & 3288)
15	BRIDGE STD. A2		STANDARD CONCRETE HANDRAIL (DETAILS - TYPE 'A') (REV. 2-20-42)
16	BRIDGE STD. C		STANDARD MISCELLANEOUS DETAILS (REV. G-1-45)
17	BRIDGE STD. D-11-GU		STANDARD PAVEMENT SECTION (NOV. 1 1944)
18	ROAD STD. SHEET C		STANDARD PAVEMENT JOINTS (REV. 9-30-44)
19	ROAD STD. SHEET GR		STANDARD GUARD RAIL (AUG. 1941)
20	BRIDGE STD. G2		STANDARD THICKENED PAVEMENT DETAILS (REV. 7-1-44)
21	BRIDGE STD. M1		STANDARD MISCELLANEOUS APPROACH DETAILS (REV. 10-1-44)
22	BRIDGE STD. S1		TYPICAL DETAILS FOR PLACING SPECIAL FILLING MATERIALS (JUNE 15 1939)
23	BRIDGE STD. T SHEET A		STANDARD TEMPORARY BRIDGE (REV. 3-26-43)
24	BRIDGE STD. T SHEET B		STANDARD TEMPORARY BRIDGE (REV. 11-13-39)
25	BRIDGE STD. Z SHEET A		STANDARD DETOUR SIGNS (REV. 12-10-40)
26	BRIDGE STD. Z SHEET B		STANDARD DETOUR SIGNS (REV. 3-26-43)



Revised 11-21-45  
For Structure No. 154-B-3288.  
Revised 4-15-46 Changed Proj Designation  
For Contract No. A-636 To F-490(2)

APPROVED AND FILED 11-21-45  
[Signature]  
NOV 20 1945  
[Signature]

RECOMMENDED FOR APPROVAL  
[Signature]  
APPROVED  
[Signature]



ELMER JOHN BODEN

SCORPHELLA  
CROSS

STRUCTURE NO. 14  
 15" DIA. PIPE  
 15' LONG  
 12" DIA. CONC. PIPE  
 REMOVE & CONCR. PIPE IN PLACE.

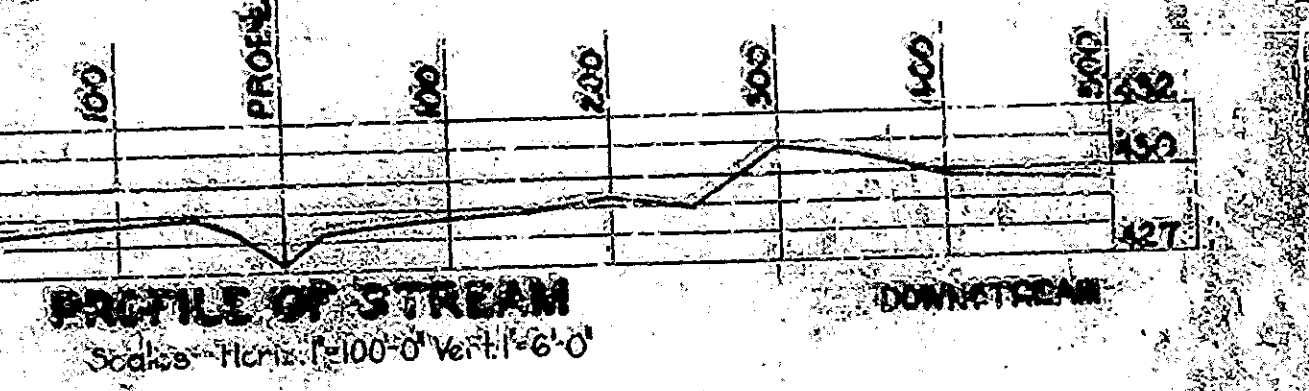
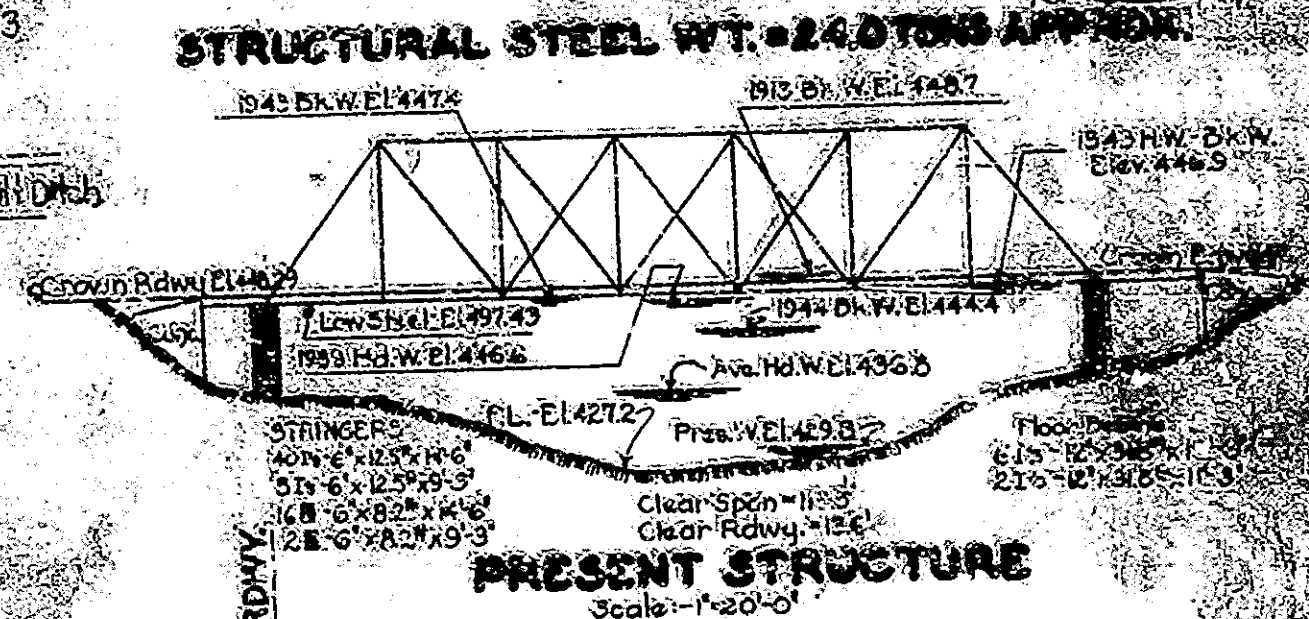
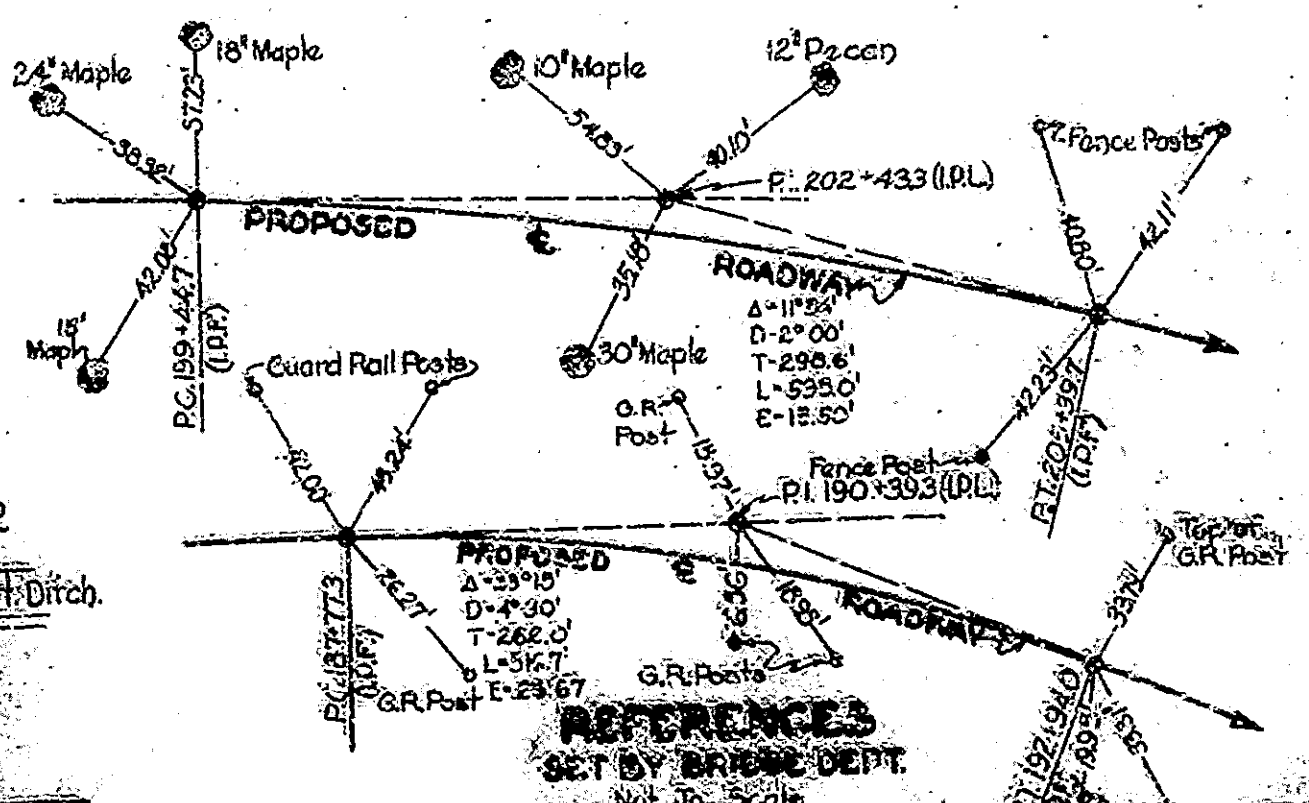
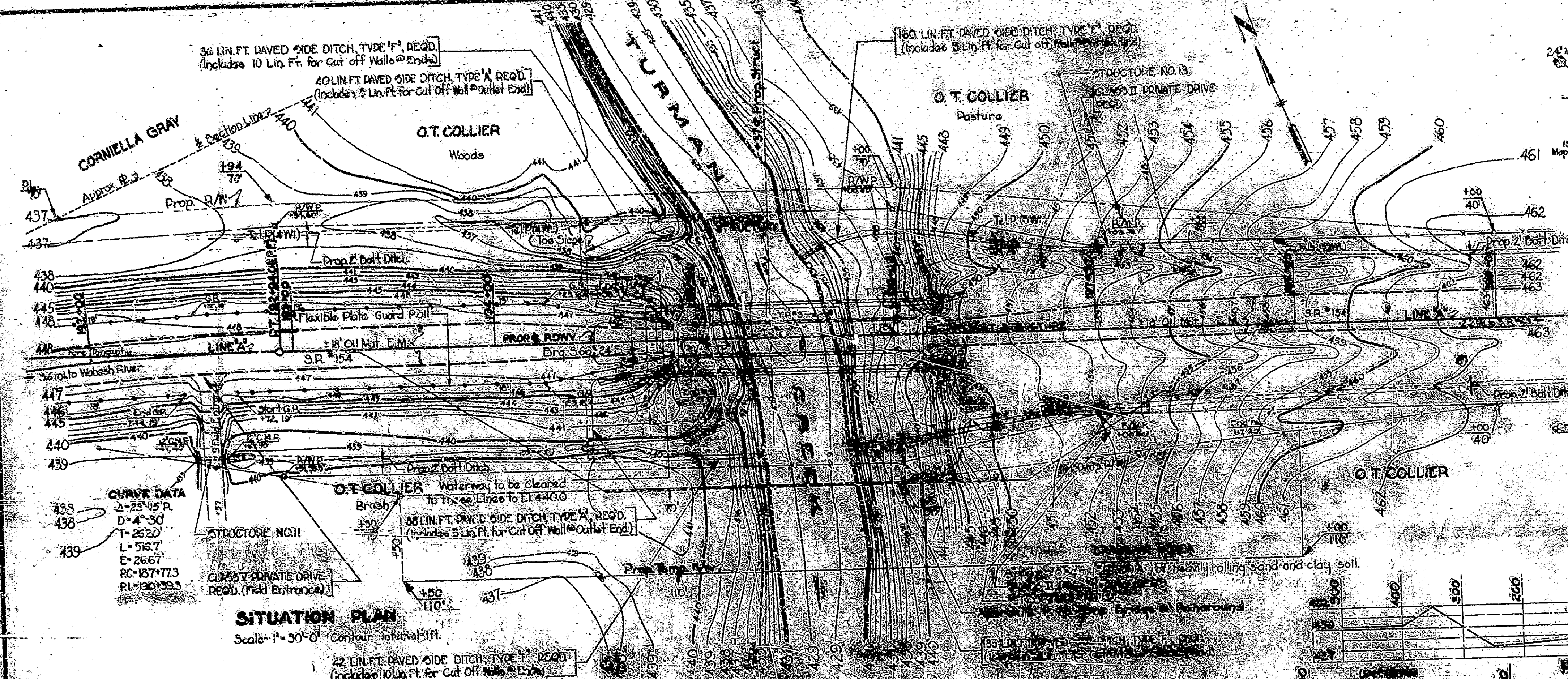
DATE	BY	NO.
7	IND. P. 4500 1946 G 42	

Notes		
1	1" DIA. CONC. PIPE	15' LONG
2	12" DIA. CONC. PIPE	REMOVE & CONCR. PIPE IN PLACE.
3	CONC. GRADE	TO MATCH PRESENT
4	CONC. GRADE	TO GRADE LIMITS
5	CONC. GRADE	TO GRADE LIMITS
6	CONC. GRADE	TO GRADE LIMITS
7	CONC. GRADE	TO GRADE LIMITS
8	CONC. GRADE	TO GRADE LIMITS
9	CONC. GRADE	TO GRADE LIMITS
10	CONC. GRADE	TO GRADE LIMITS
11	CONC. GRADE	TO GRADE LIMITS
12	CONC. GRADE	TO GRADE LIMITS
13	CONC. GRADE	TO GRADE LIMITS
14	CONC. GRADE	TO GRADE LIMITS
15	CONC. GRADE	TO GRADE LIMITS
16	CONC. GRADE	TO GRADE LIMITS
17	CONC. GRADE	TO GRADE LIMITS
18	CONC. GRADE	TO GRADE LIMITS
19	CONC. GRADE	TO GRADE LIMITS
20	CONC. GRADE	TO GRADE LIMITS
21	CONC. GRADE	TO GRADE LIMITS
22	CONC. GRADE	TO GRADE LIMITS
23	CONC. GRADE	TO GRADE LIMITS
24	CONC. GRADE	TO GRADE LIMITS
25	CONC. GRADE	TO GRADE LIMITS
26	CONC. GRADE	TO GRADE LIMITS
27	CONC. GRADE	TO GRADE LIMITS
28	CONC. GRADE	TO GRADE LIMITS
29	CONC. GRADE	TO GRADE LIMITS
30	CONC. GRADE	TO GRADE LIMITS
31	CONC. GRADE	TO GRADE LIMITS
32	CONC. GRADE	TO GRADE LIMITS
33	CONC. GRADE	TO GRADE LIMITS
34	CONC. GRADE	TO GRADE LIMITS
35	CONC. GRADE	TO GRADE LIMITS
36	CONC. GRADE	TO GRADE LIMITS
37	CONC. GRADE	TO GRADE LIMITS
38	CONC. GRADE	TO GRADE LIMITS
39	CONC. GRADE	TO GRADE LIMITS
40	CONC. GRADE	TO GRADE LIMITS

DC 07-10-1946

BT 200-407 (1/1)

BRIDGES OVER 20 SPAN				
YEAR	NO.	SPAN	TYPE	STATUS
1946	3	42		



LAYOUT  
**STEEL TRUSS BRIDGE**  
 1 SPAN @ 125'-0"  
 OVER TURMAN CREEK  
 ON STATE ROAD - 194-A

2-20' WALKS @ 25'-0" ROADWAY  
 ON STATE ROAD - 194-A

**STATE HIGHWAY COMMISSION OF INDIANA**  
**SULLIVAN COUNTY**

SCALE - AS NOTED  
 OCTOBER 15 1946

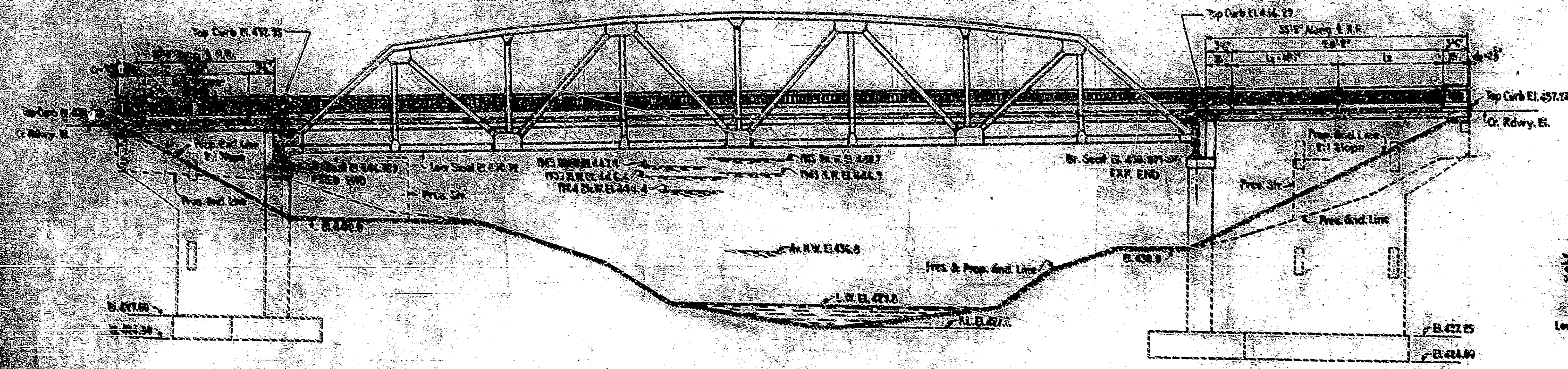
RECOMMENDED FOR APPROVAL: *[Signature]*

PROJECT: T-194-A  
 STATION: 194+00  
 STRUCTURE NO. 3

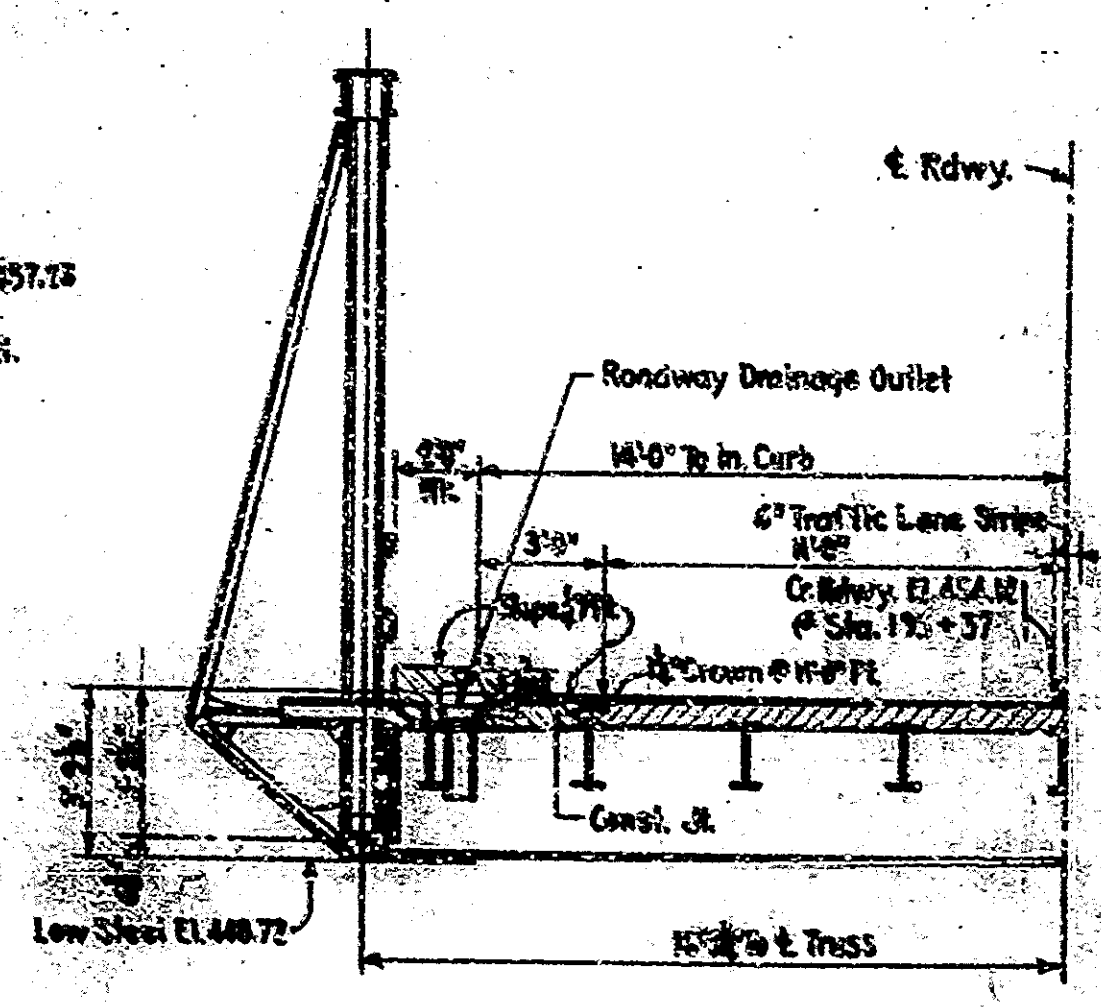
CONTRACT NO. 209

NOTE - STRUCTURE TO BE BUILT TO A +FEES S GRADE, ROADWAY TO BE BUILT TO A 350' V.C. AND +2.625% GRADE.

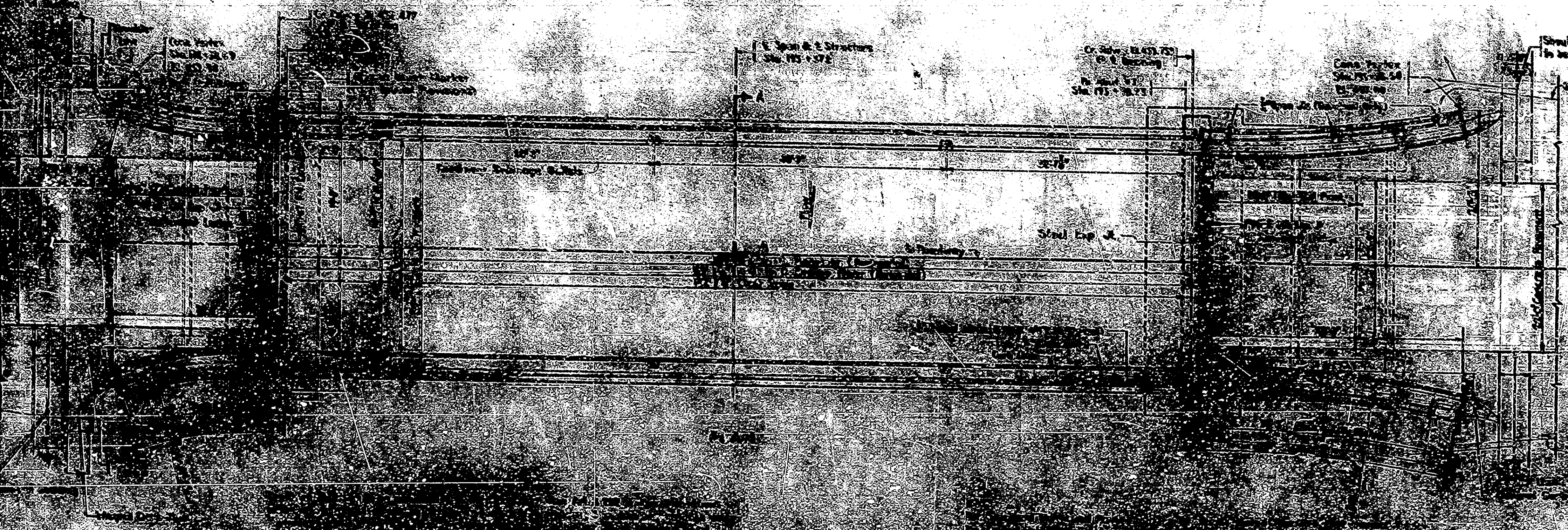
BRIDGES OVER RD.					
NO.	STATE	YEAR	TYPE	SPAN	LENGTH
7	IND.	1946	4	4	148



SOUTH ELEVATION



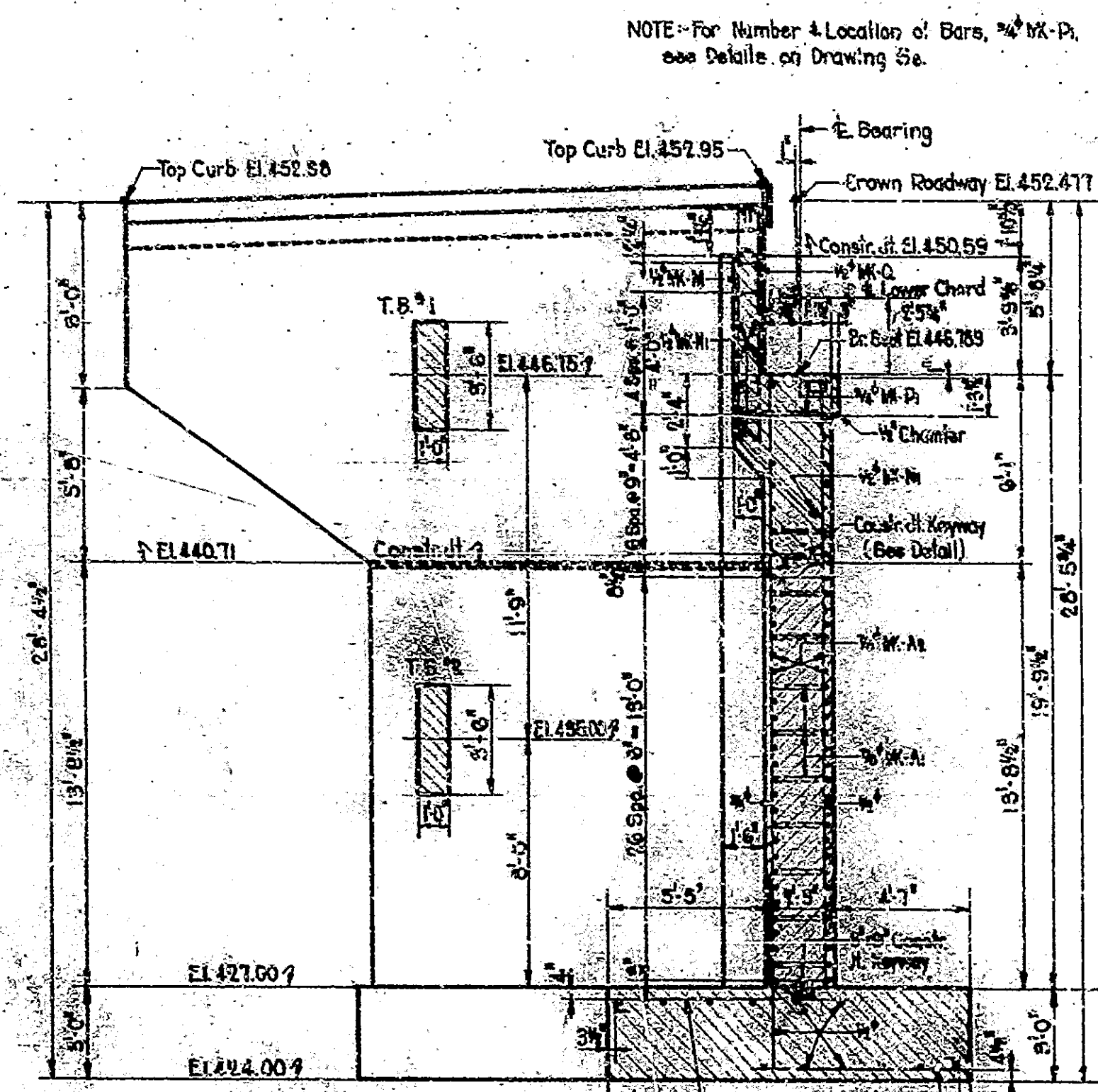
HALF SECTION A-A  
Scale: 1/2"=10'



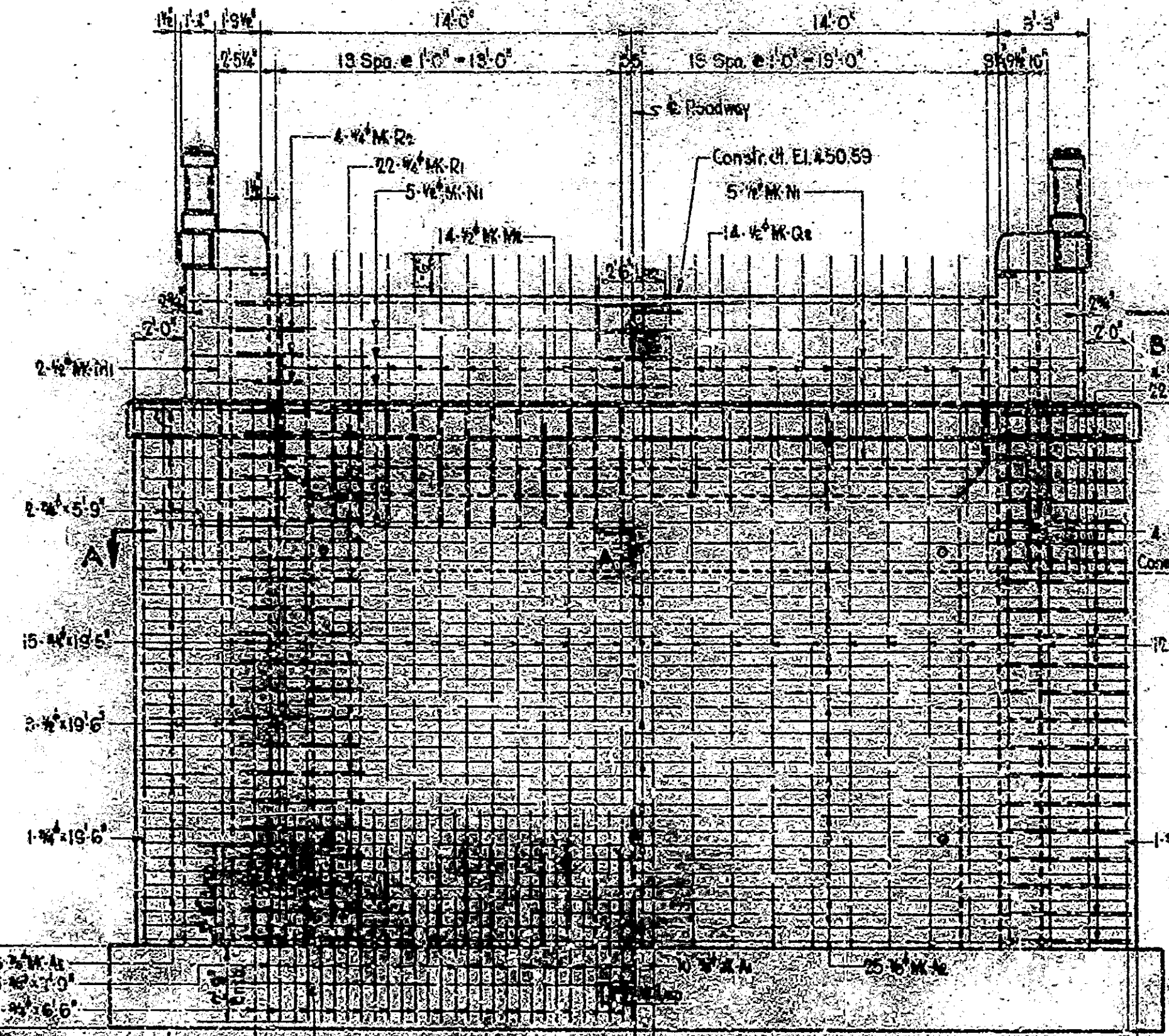
STANDARD D-II-GU SECTION  
See Std. Drawg.

GENERAL PLAN  
STEEL TRUSS BRIDGE

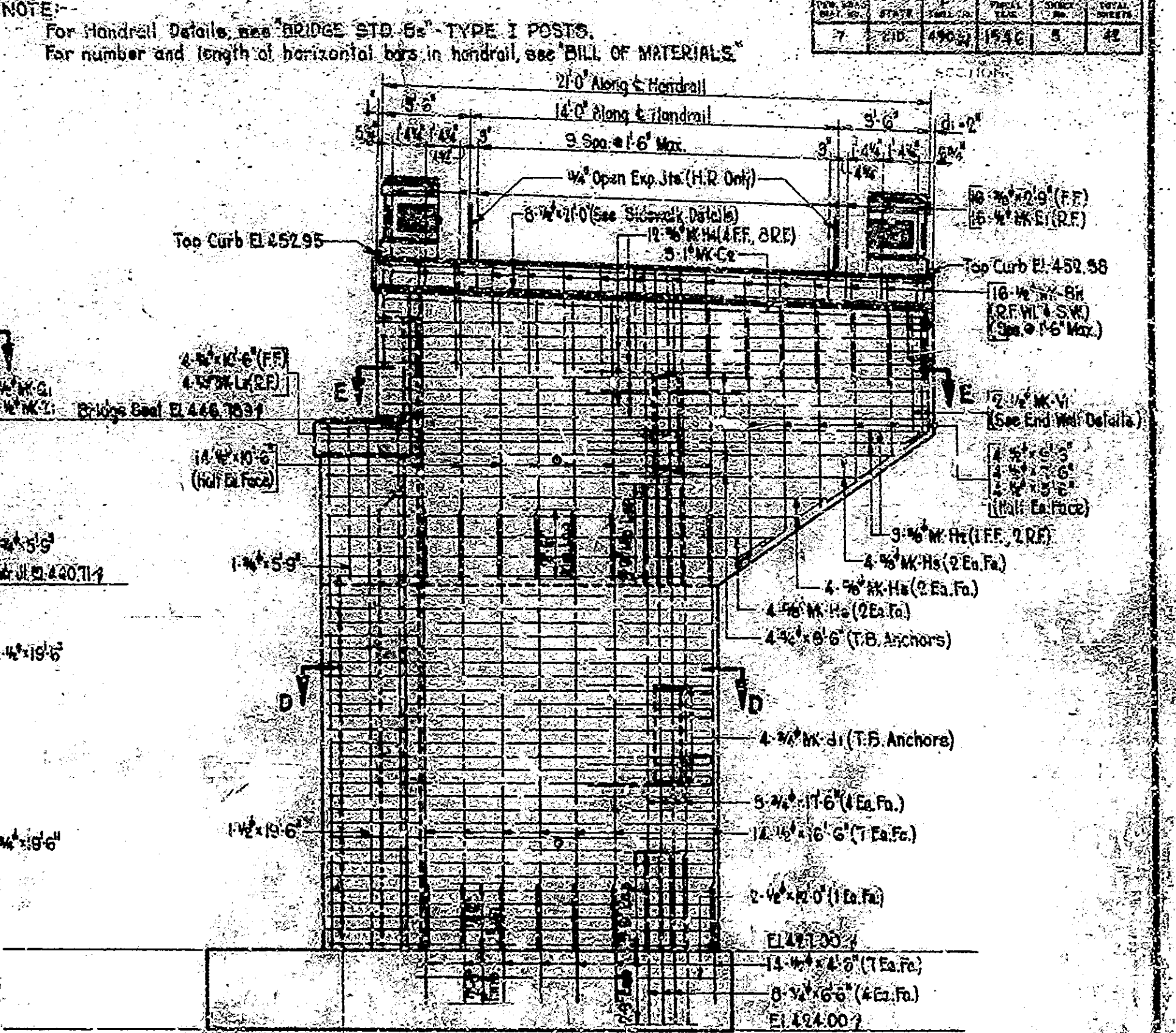
DESIGNED BY: [Name]  
CHECKED BY: [Name]  
DATE: [Date]



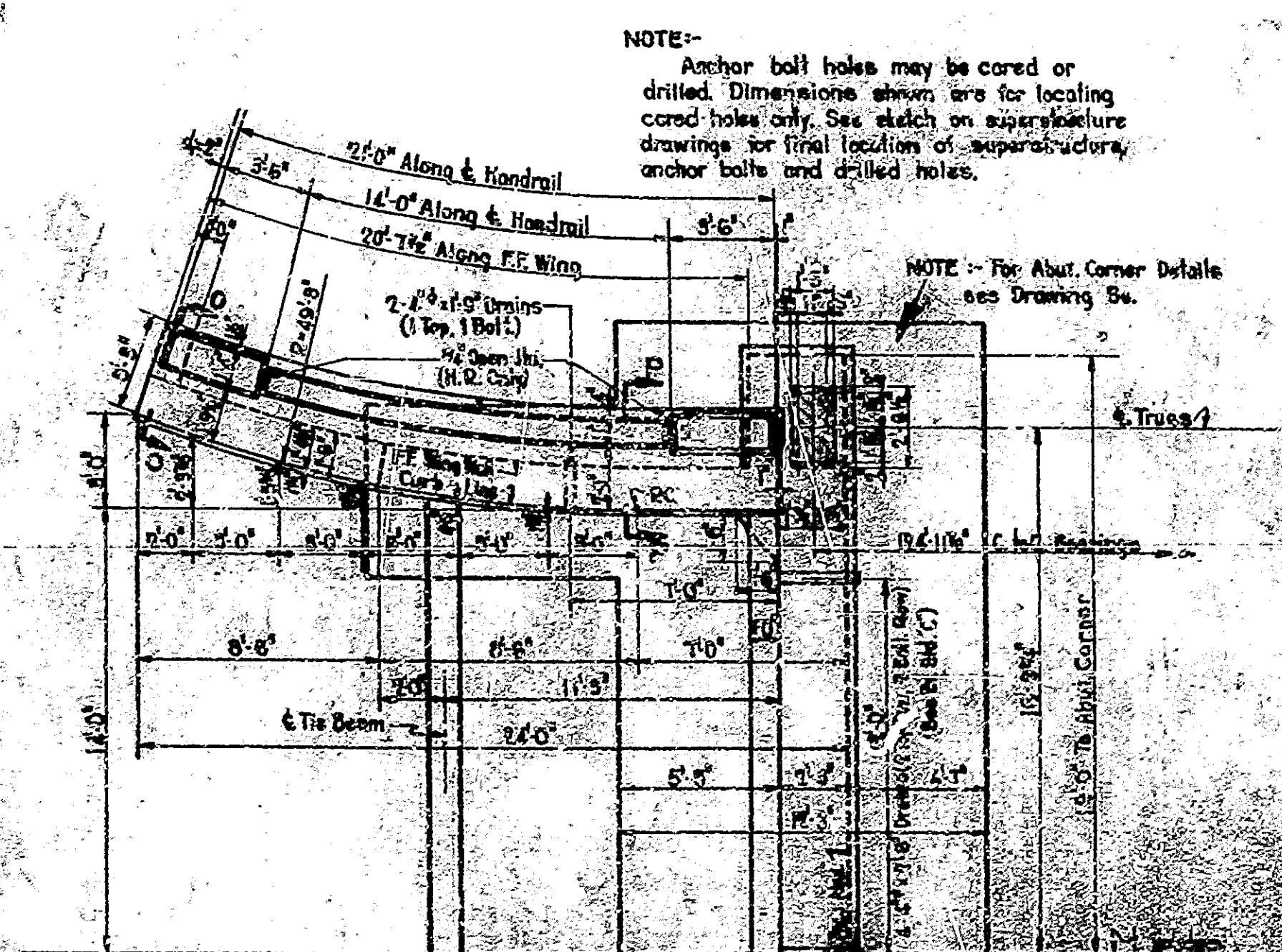
**SECTION ON E ROADWAY**  
Maximum Soil Pressure = 2.55 T/S



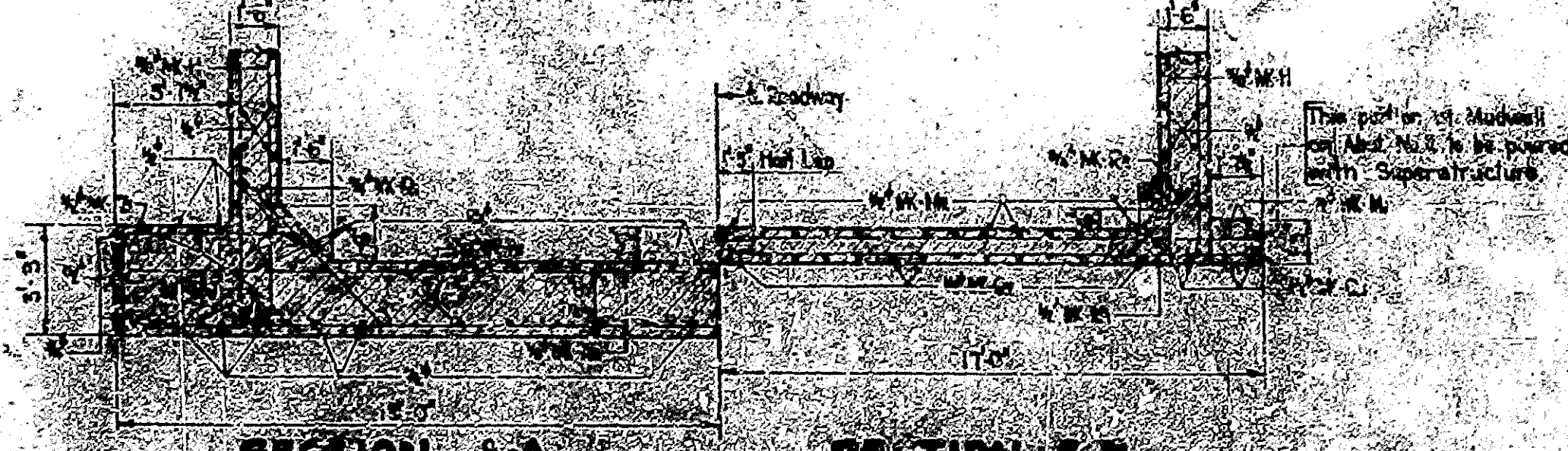
**ABUTMENT ELEVATION**  
LEFT HALF SHOWING REAR FACE STEEL RIGHT HALF SHOWING FRONT FACE STEEL



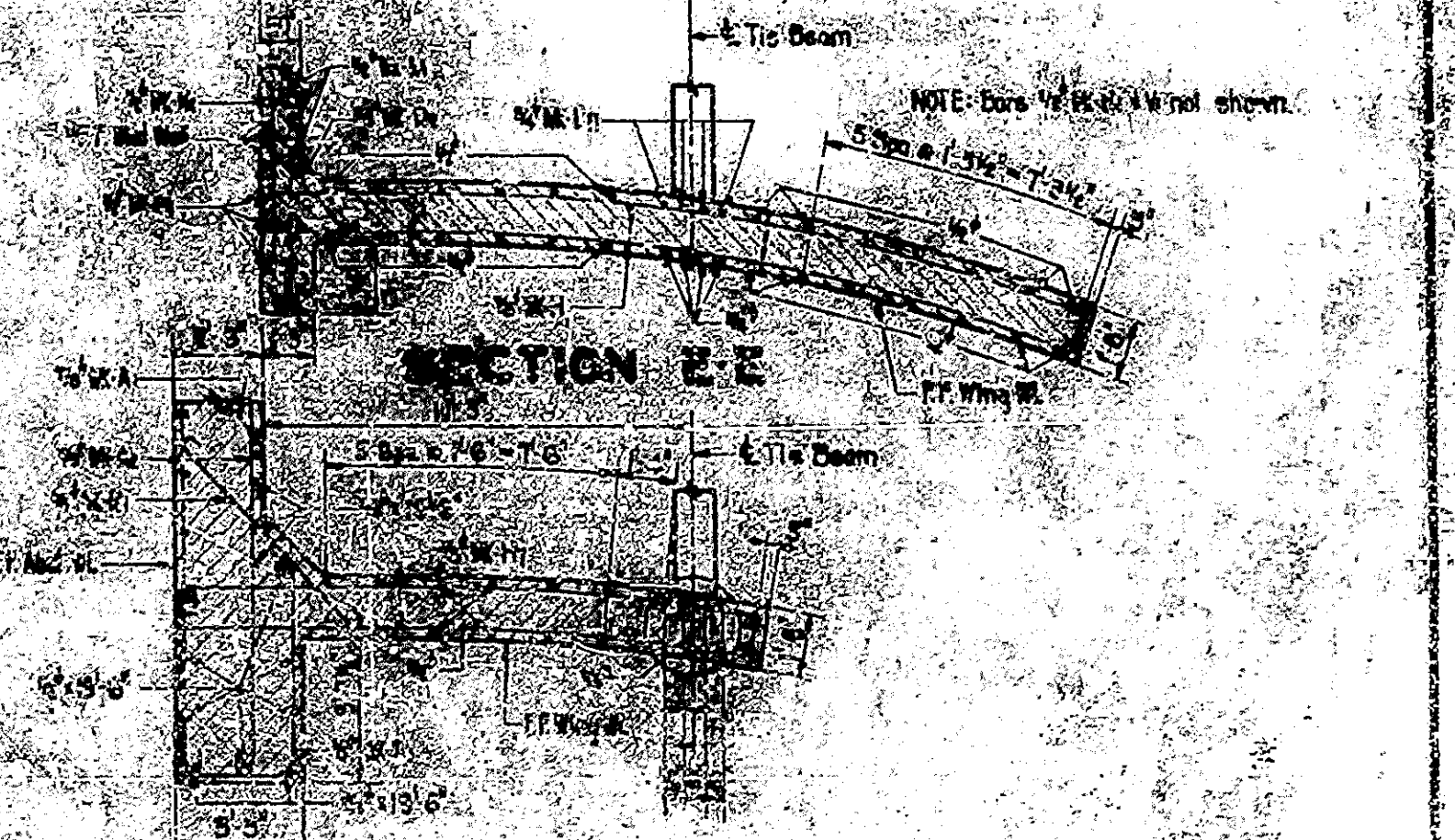
**WING ELEVATION**



**HALF PLAN**



**SECTION A-A SECTION B-B**



**SECTION C-C SECTION D-D**

DETAILS - ABUTMENT NO. 1  
STATE HIGHWAY COMMISSION OF INDIANA

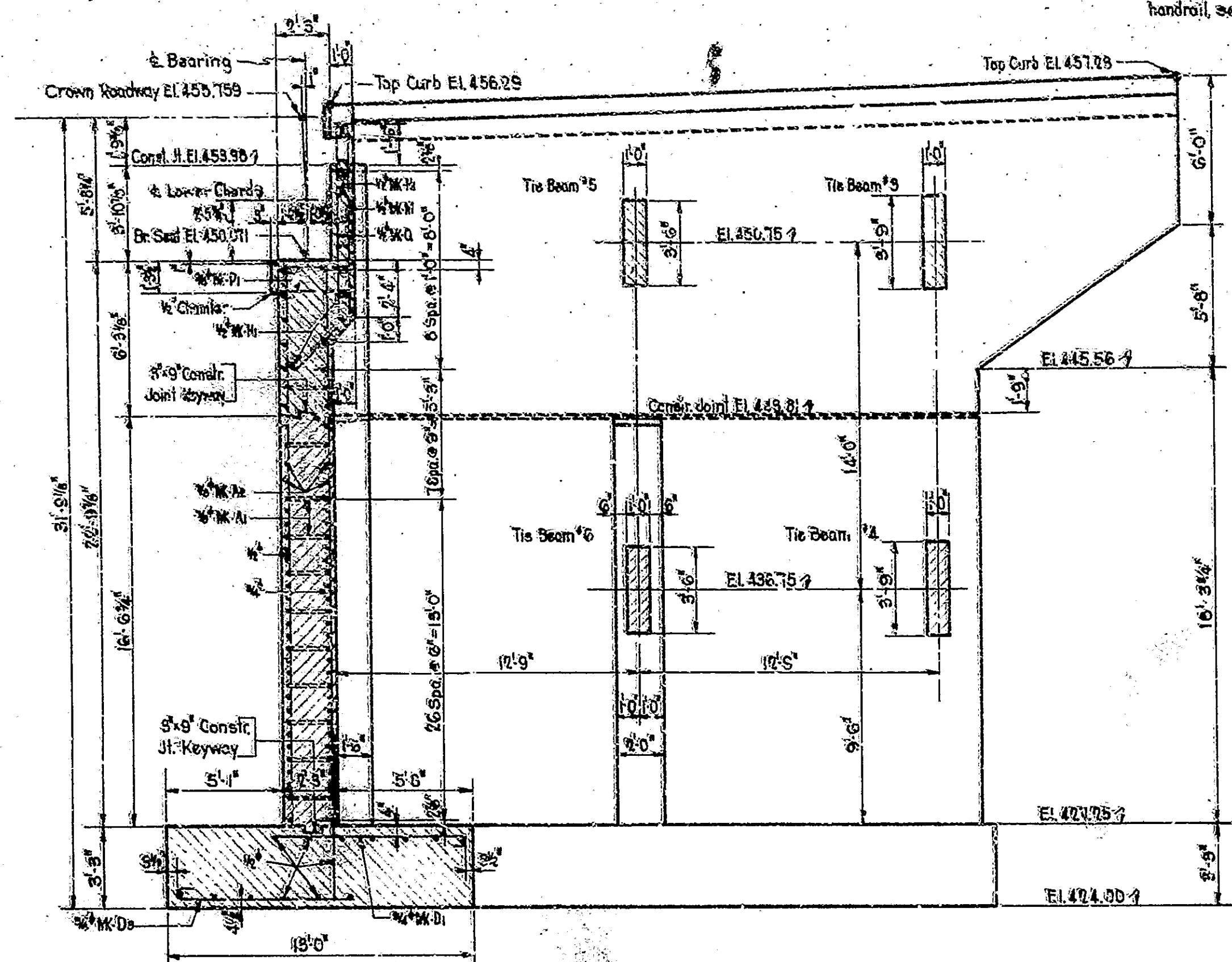
SCALE: AS SHOWN UNLESS NOTED  
 DATE: OCTOBER 15, 1938  
 STRUCTURE NO. 26-1  
 BRIDGE CONTRACT NO. 26-1

173-110-44	10/10/38
173-110-45	10/10/38
173-110-46	10/10/38

NOTE: For number and location of bars, see Details, Drawing 56

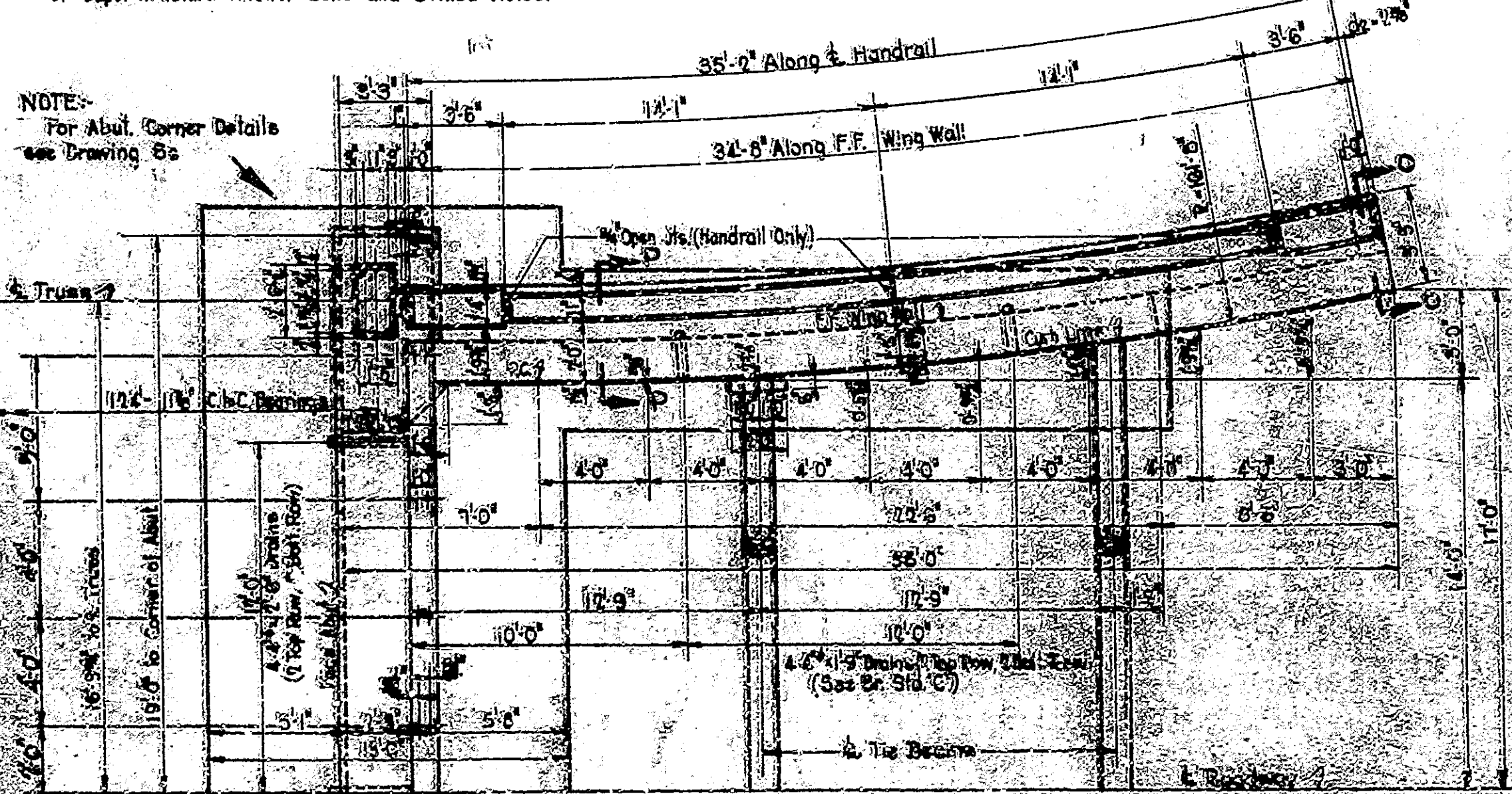
NOTE: For Handrail Details, see "BRIDGE STANDARD 3a" Type I Fosh. For number and length of horizontal bars in handrail, see "BILL OF MATERIALS."

SPAN		SPAN		SPAN	
NO.	LENGTH	NO.	LENGTH	NO.	LENGTH
7	40.00	1942	6	42	

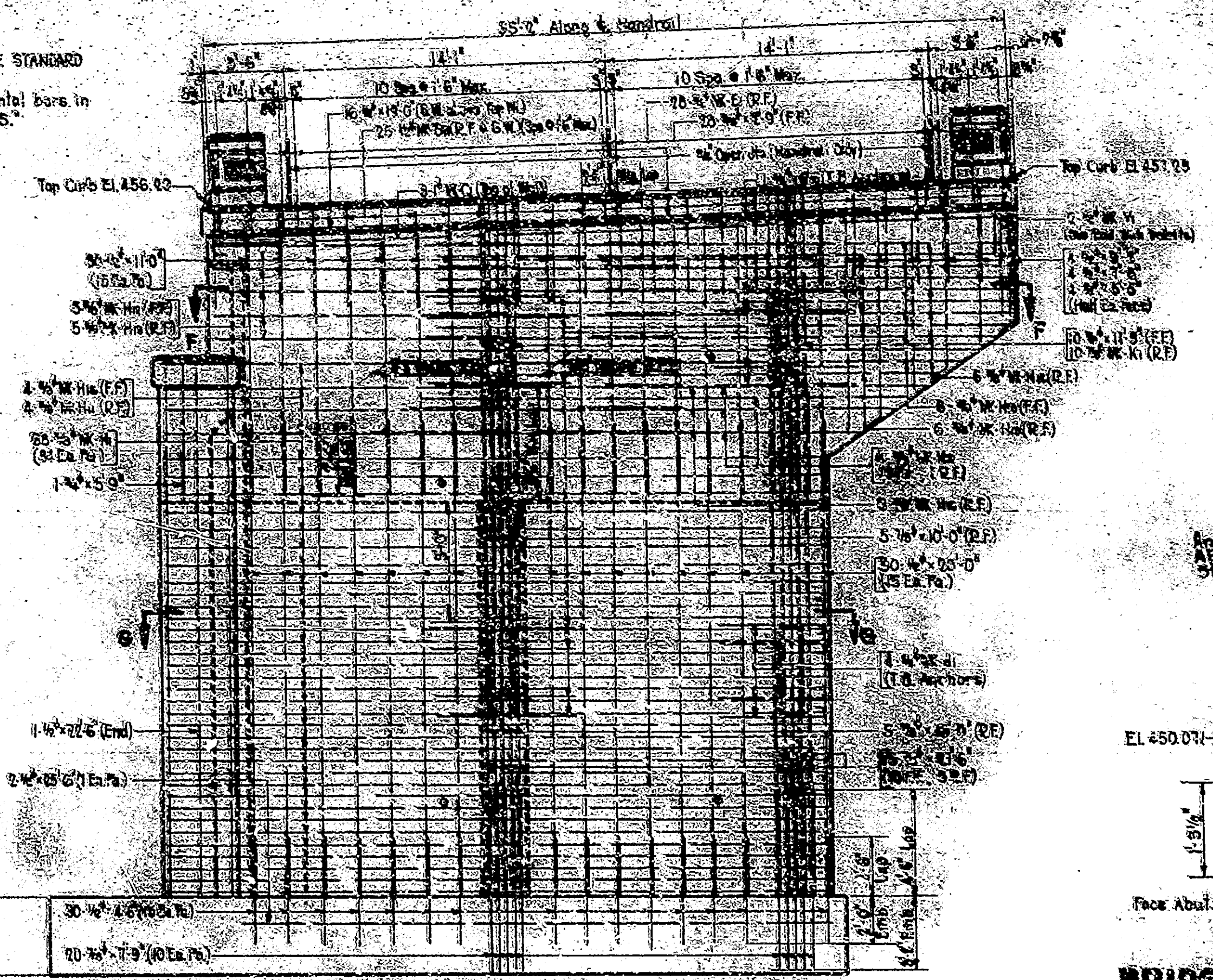


**SECTION ON & ROADWAY**  
Maximum Soil Pressure = 2.57'

NOTE: Anchor Bolt Holes may be cored or drilled. Dimensions shown are for locating cored holes only. See sketch on Superstructure Drawings for final location of Superstructure Anchor Bolts and Drilled Holes.

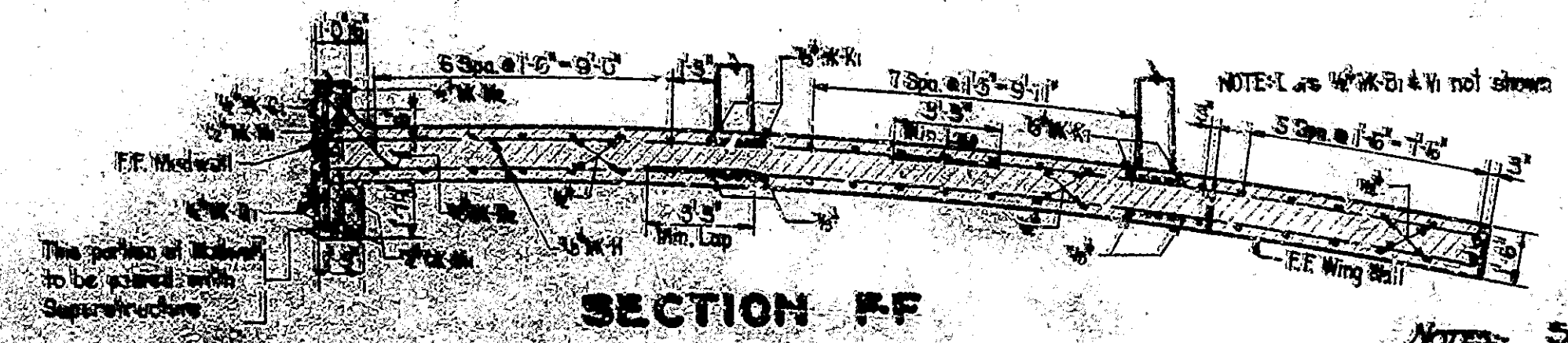


**HALF PLAN - ABUTMENT No. 2**

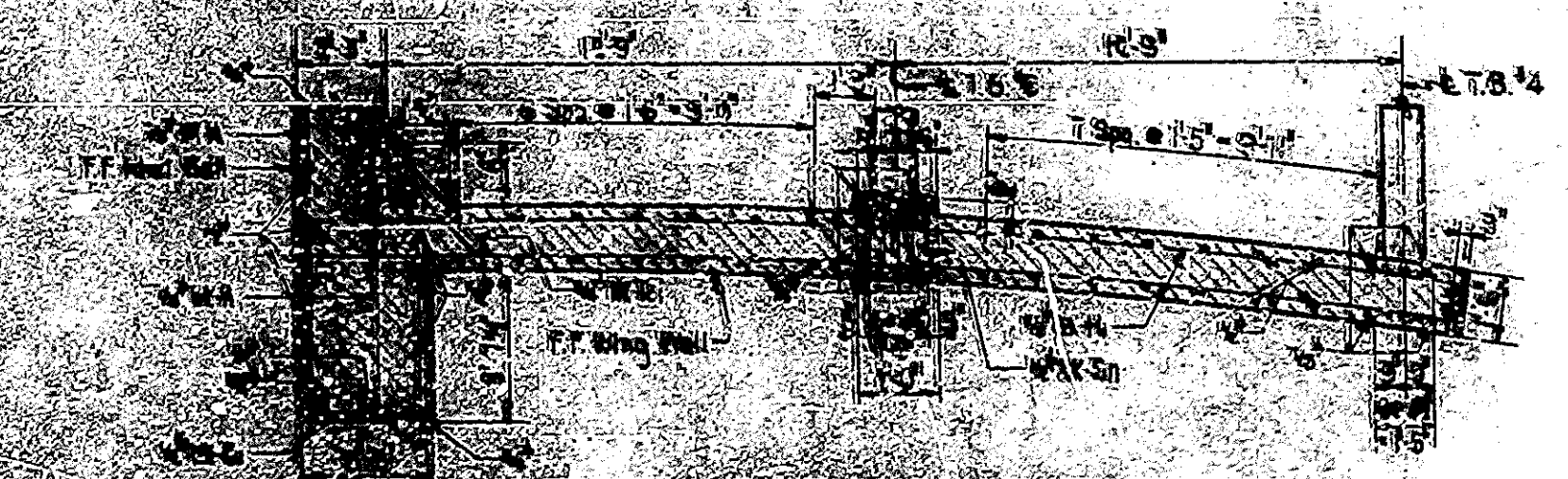


**WING ELEVATION**

**BRIDGE SEAT DETAILS**  
SHOWING EXISTING JOINT ANCHOR BOLTS  
Scale: 3/4" = 1'-0"



**SECTION FF**



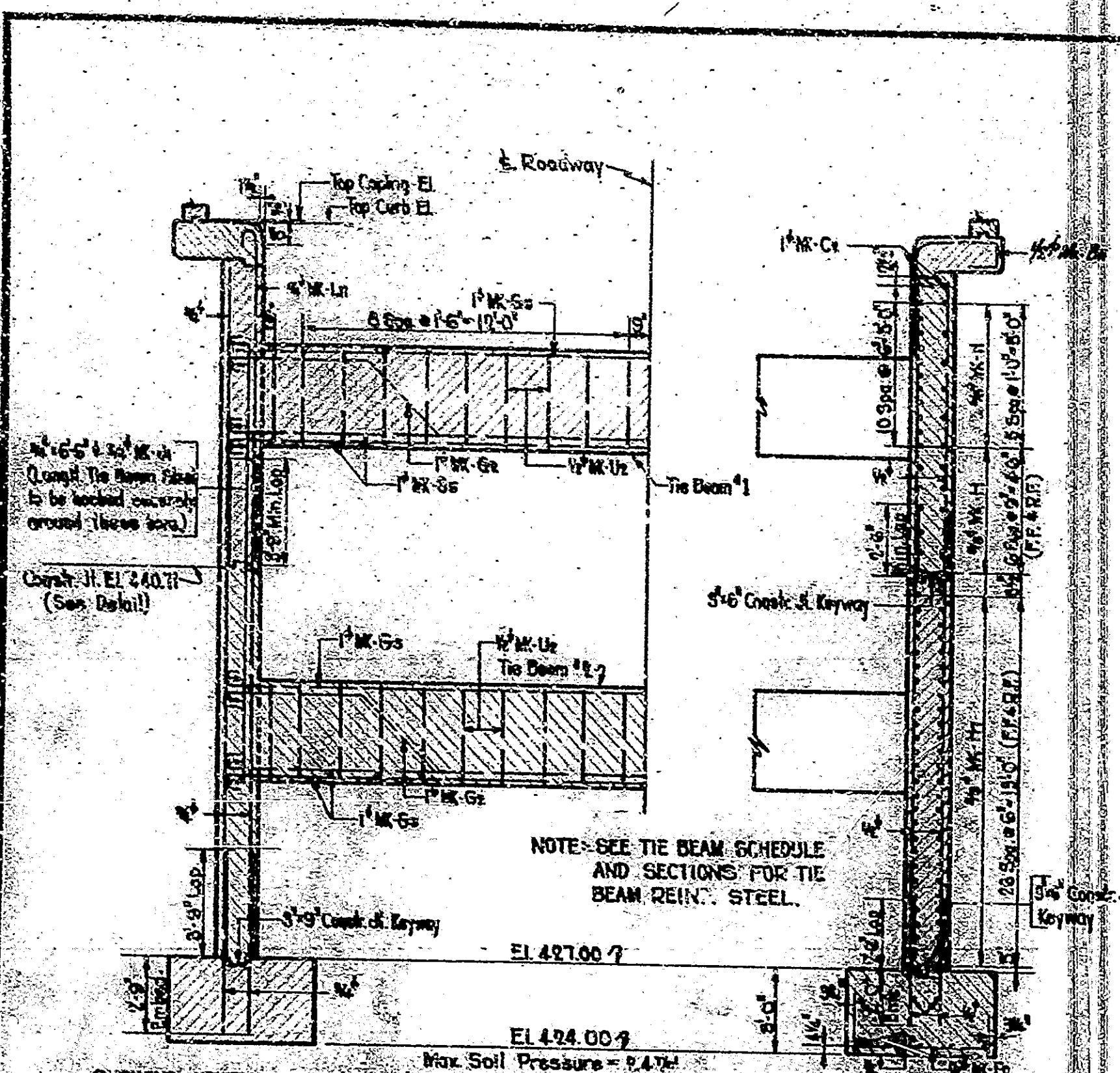
**SECTION G-G**

NOTES: SEE DRAW. 52 FOR TYPICAL SIDEWALK LINER SANDS. SEE DRAW. 52 FOR SECTIONS O-D & P-P AND FOR END WALL & SIDEWALK DETAILS. SEE DRAW. 55 FOR PART SECTIONS THROUGH WALLS AND FOR THE BEAM SECTIONS & SCHEDULE, ALSO FOR ABUTMENT ELEVATION. SEE DRAW. 56 FOR CONSTRUCTION JOINT DETAILS.

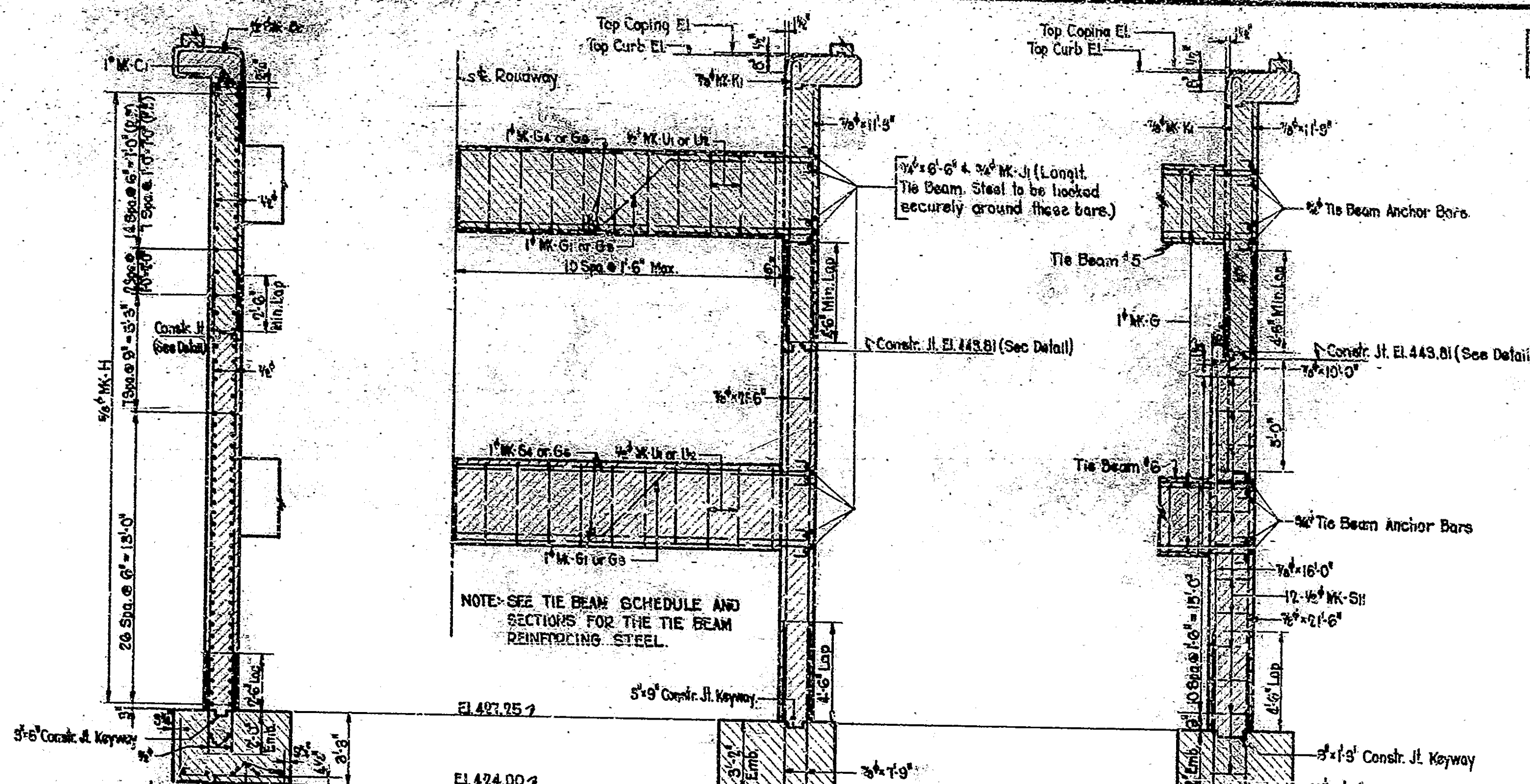
**DETAILS - ABUTMENT No. 2**  
**STATE HIGHWAY COMMISSION OF INDIANA**

SCALE: 1/4" = 1'-0" (UNLESS NOTED) OCTOBER 15, 1925  
 RECOMMENDED FOR APPROVAL: [Signature]  
 PROJECT: 1-180-1 STATION: 185+57  
 STRUCTURE NO. 3056  
 BRIDGE CONTRACT NO. 2482

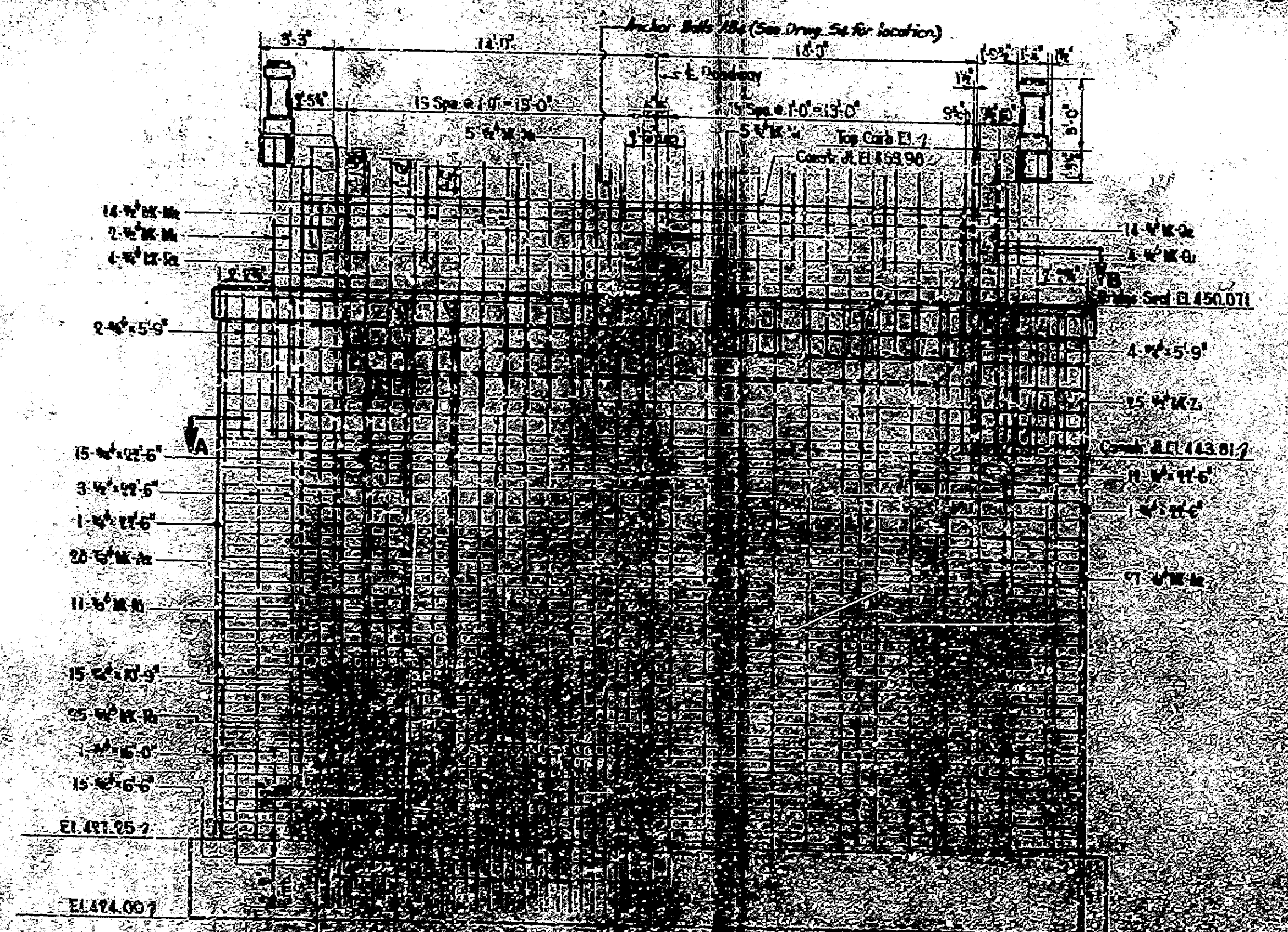
NO.	DATE	BY	CHKD.	APP.	REVISION
7	10/15/15				46



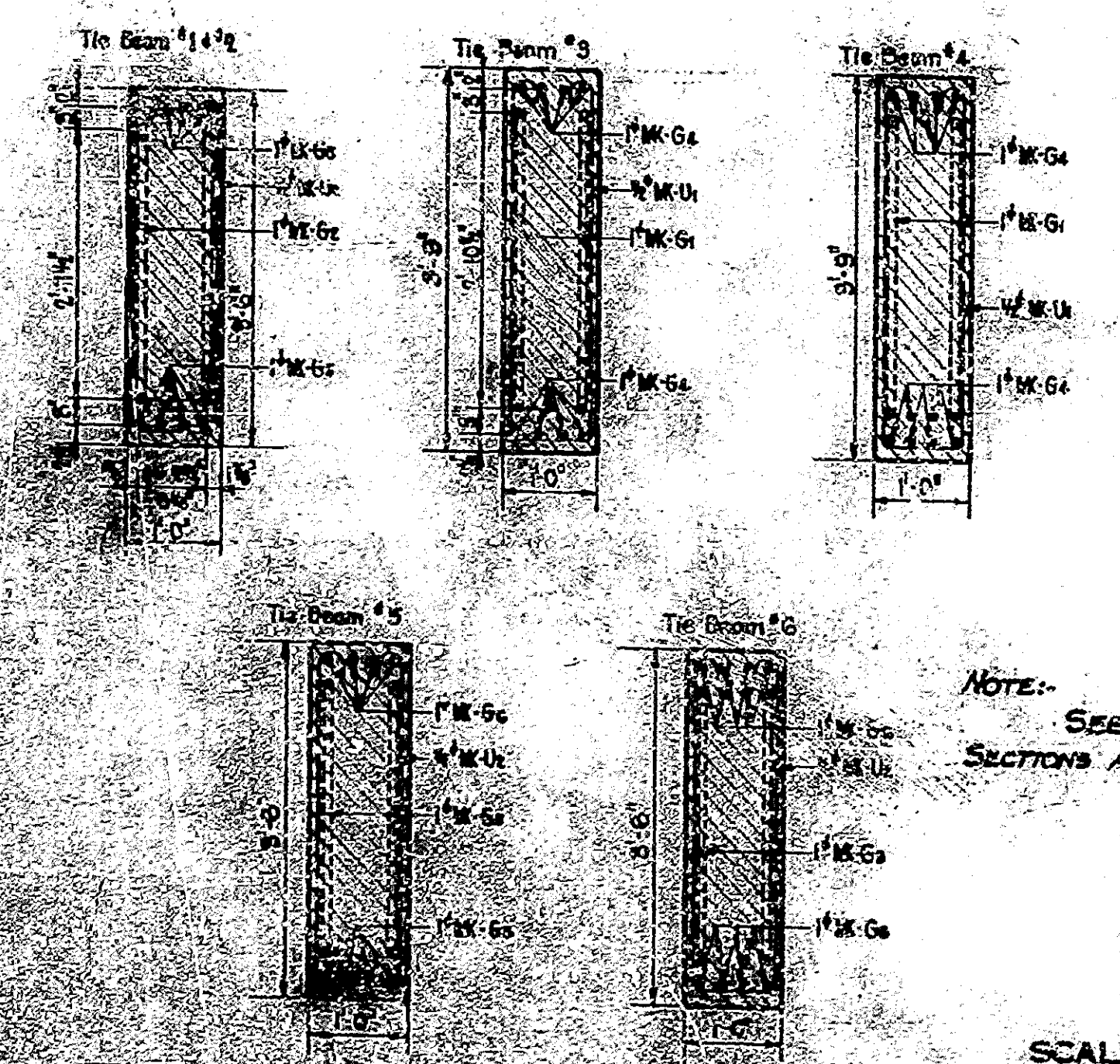
SHOWING VERTICAL GIRDER AND TIE BEAM REINFORCING STEEL  
 SHOWING WALL REINFORCING STEEL  
**PART SECTION THRU WING WALLS PERPENDICULAR TO ROADWAY - ABUT. NO. 1**



SHOWING WALL REINFORCING STEEL  
 SHOWING TYPICAL TIE BEAM REINF. STEEL AND VERTICAL GIRDER REINF. STEEL AT TIE BEAMS NO. 5 & NO. 6  
 SHOWING VERTICAL GIRDER REINF. STEEL AT TIE BEAMS NO. 5 & NO. 6  
**PART SECTIONS THRU WING WALLS PERPENDICULAR TO ROADWAY - ABUT. NO. 2**



LEFT HALF PLAN OF ABUTMENT



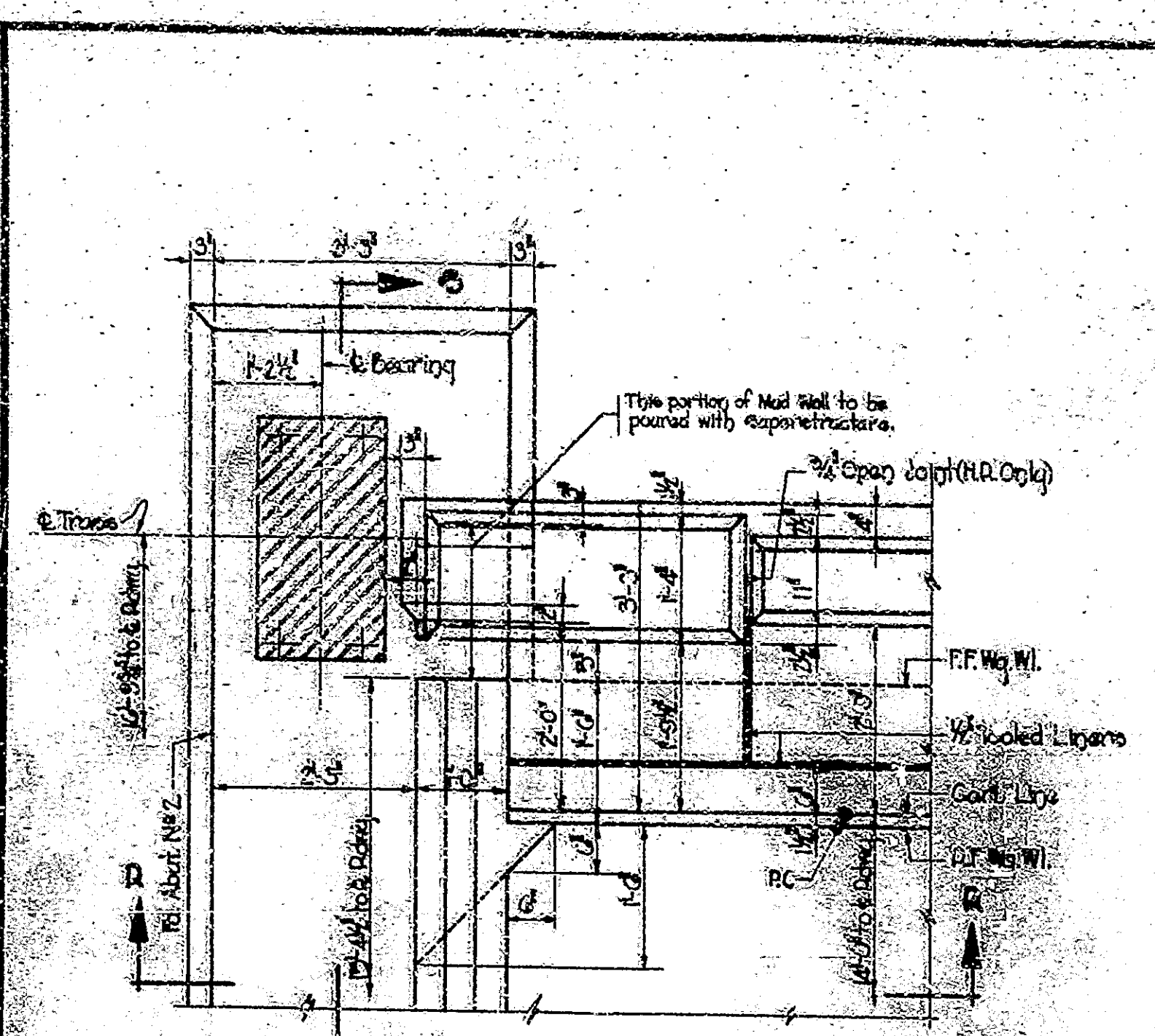
TIE BEAM SCHEDULE			
TIE BEAM NO.	NO. BARS PER TIE BEAM	MARK	SIZE
1	3	Ga	1"
	20	Ga	1/2"
2	3	Ga	1"
	20	Ga	1/2"
3	2	Ua	1"
	21	Ga	1/2"
4	11	Ga	1"
	21	Ua	1/2"
5	2	Ga	1"
	23	Ga	1/2"
6	2	Ua	1"
	21	Ua	1/2"

NOTE:- SEE DRAW. S<sub>3</sub> FOR CONSTRUCTION JOINT DETAILS AND FOR SECTIONS A-A & B-B.

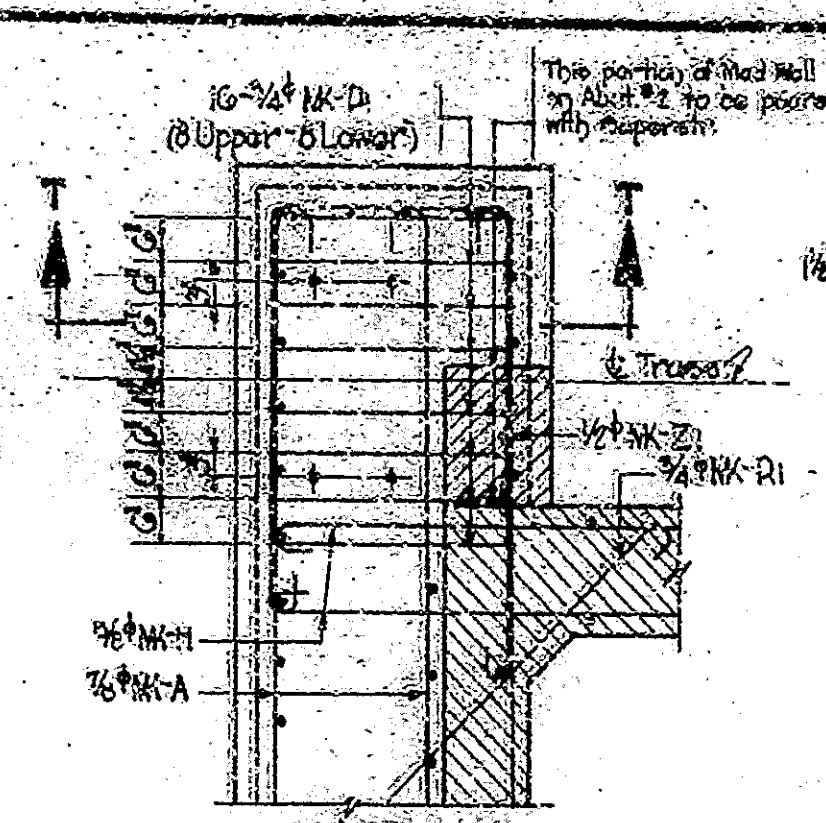
DETAILS - ADJUSTMENTS NO. 1 & NO. 2  
**STATE HIGHWAY COMMISSION OF INDIANA**

SCALE: 1/4" = 1'-0" UNLESS NOTED  
 RECOMMENDED FOR APPROVAL: *[Signature]*  
 PROJECT: F-400(g) STATION: 105+71.2  
 DRAWING: 66 OF 8 STRUCTURE: 105+71.2  
 BRIDGE CONTRACT NO. 2667

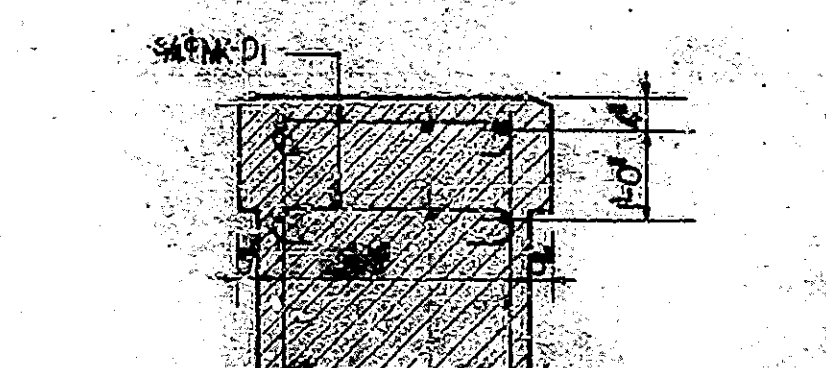
BRIDGE OVER SPAN				
NO.	STATE	PROJ.	DATE	BY
7	TRD.	4906	1948	D. H.



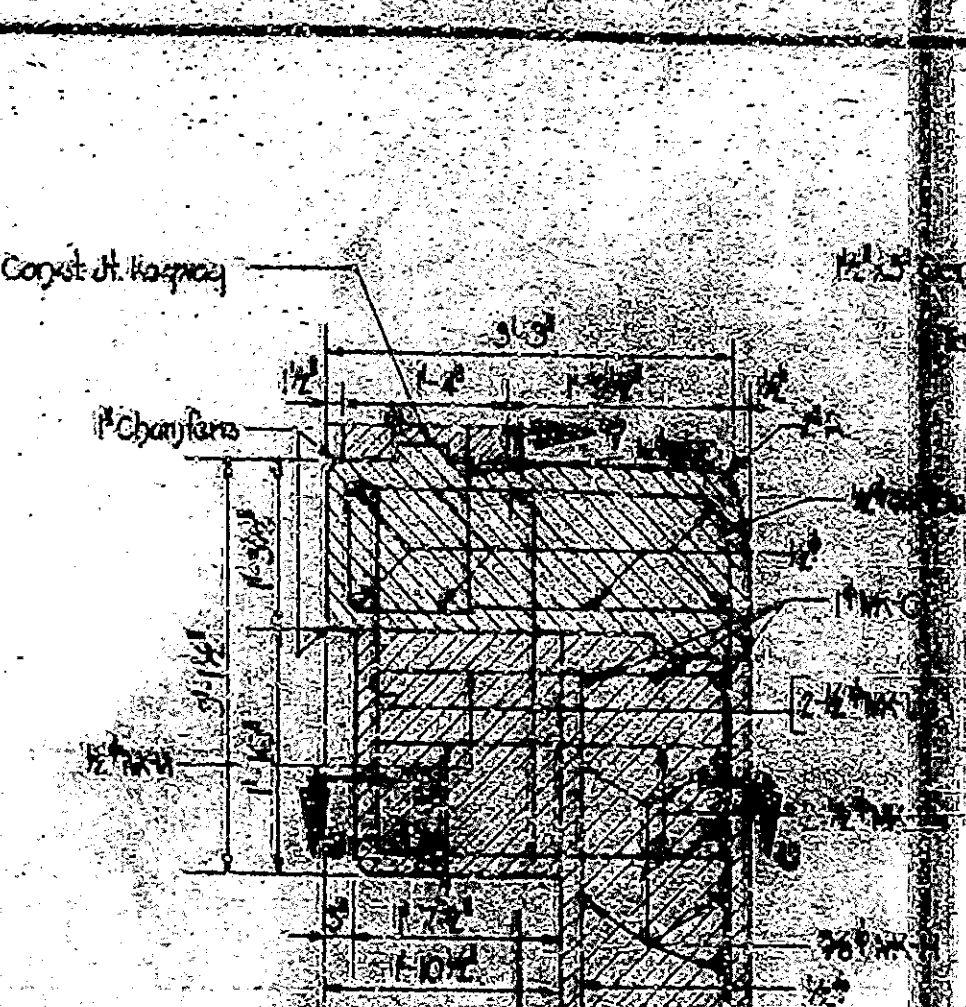
PART PLAN - ABUT. NO. 2



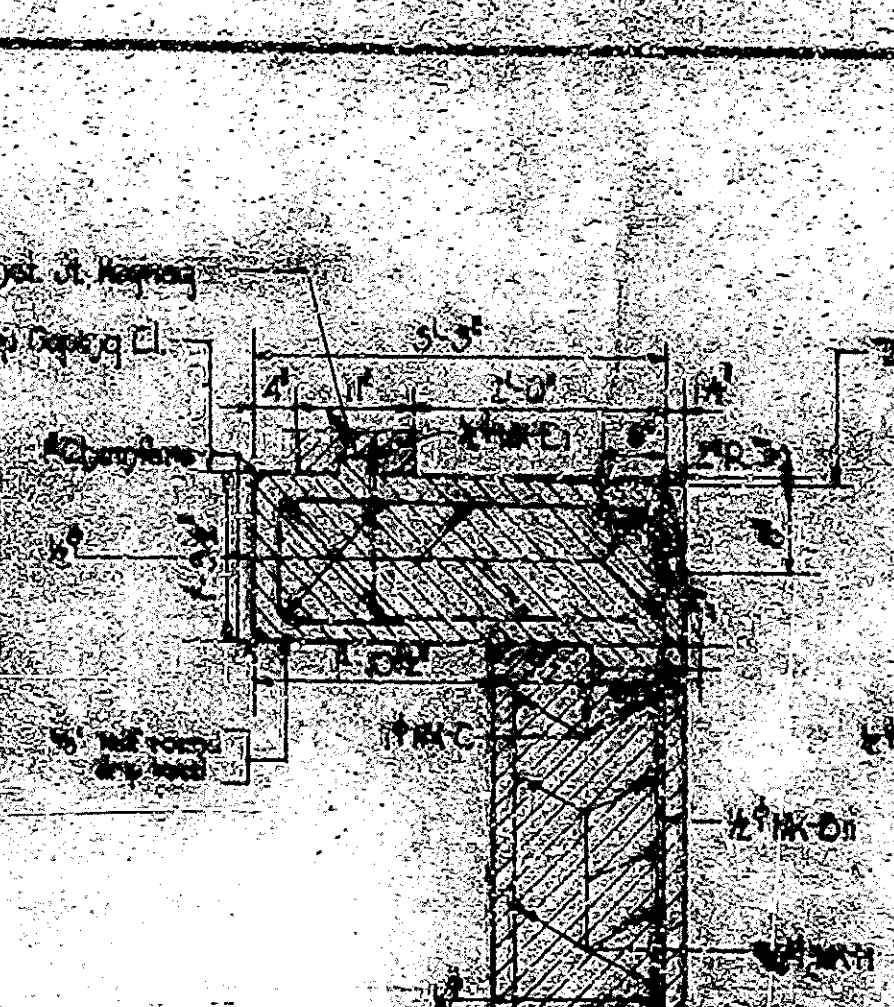
PART PLAN



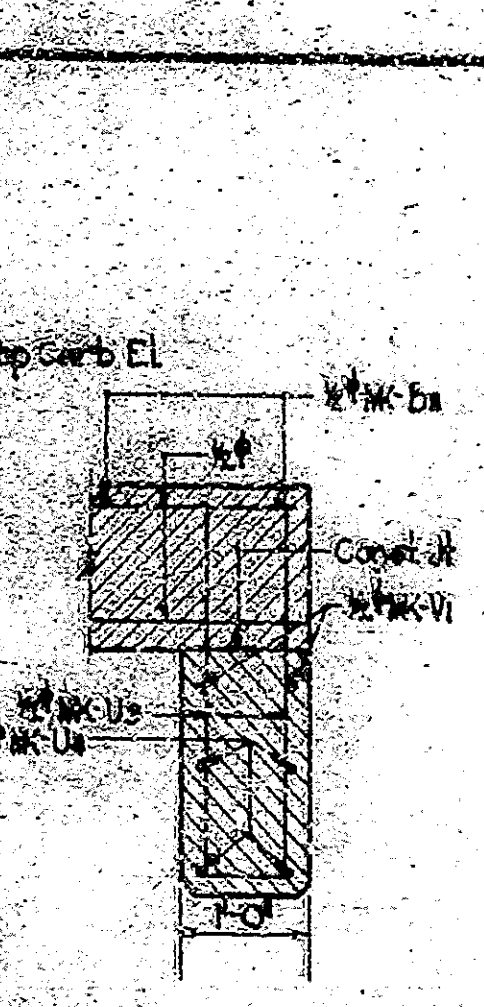
SECTION T-T  
DETAILS SHOWING REINFORCING UNDER TRUSS CHORDS  
Scale: 1/4" = 1'-0"



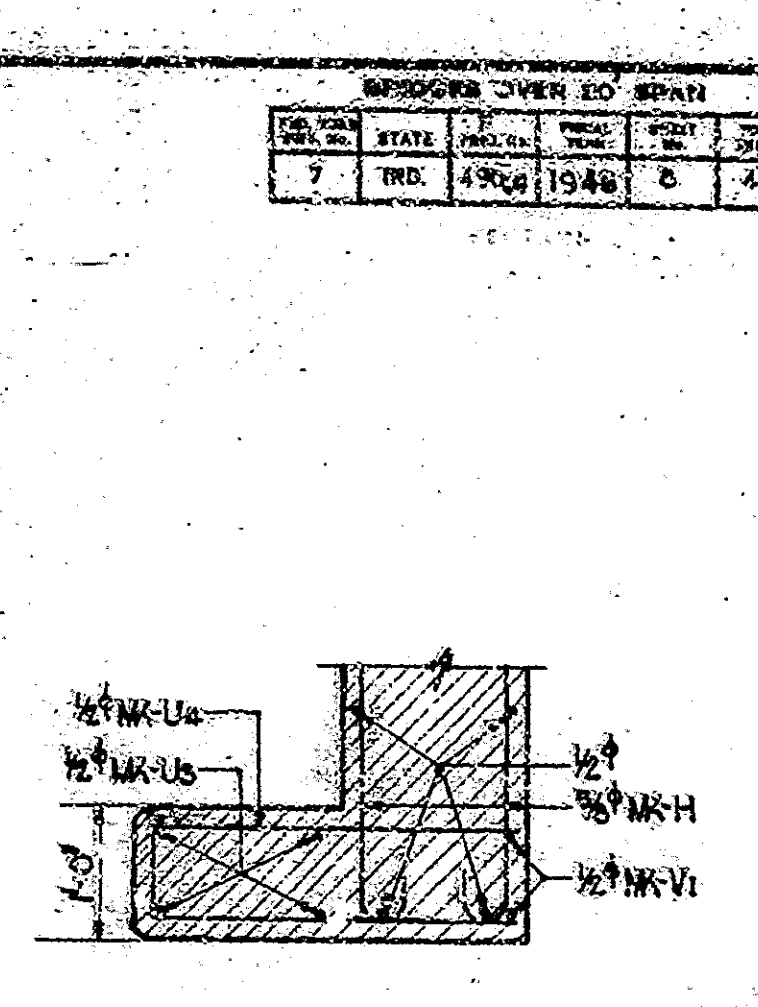
SECTION O-O



SECTION P-P

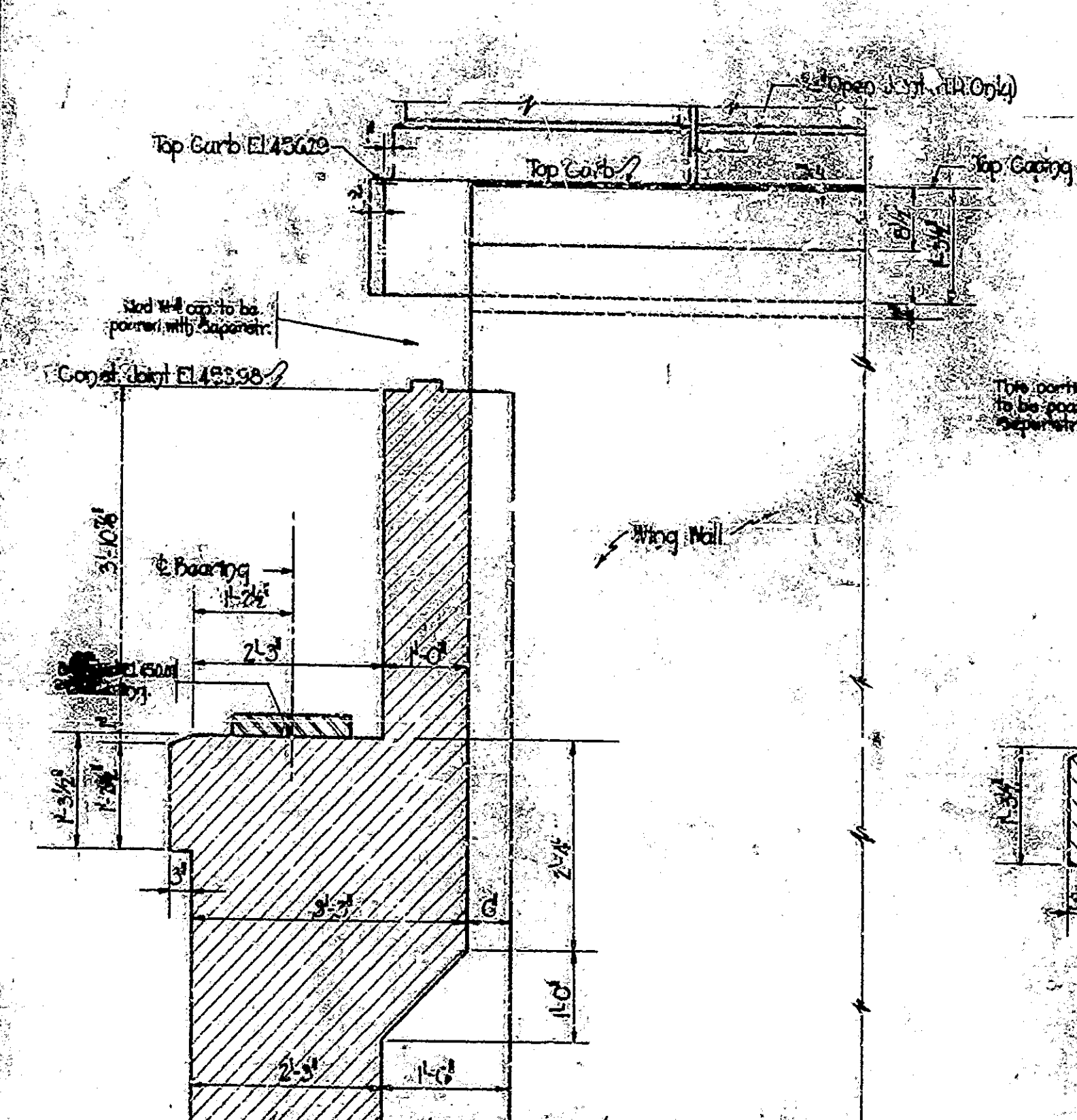


SECTION V-V

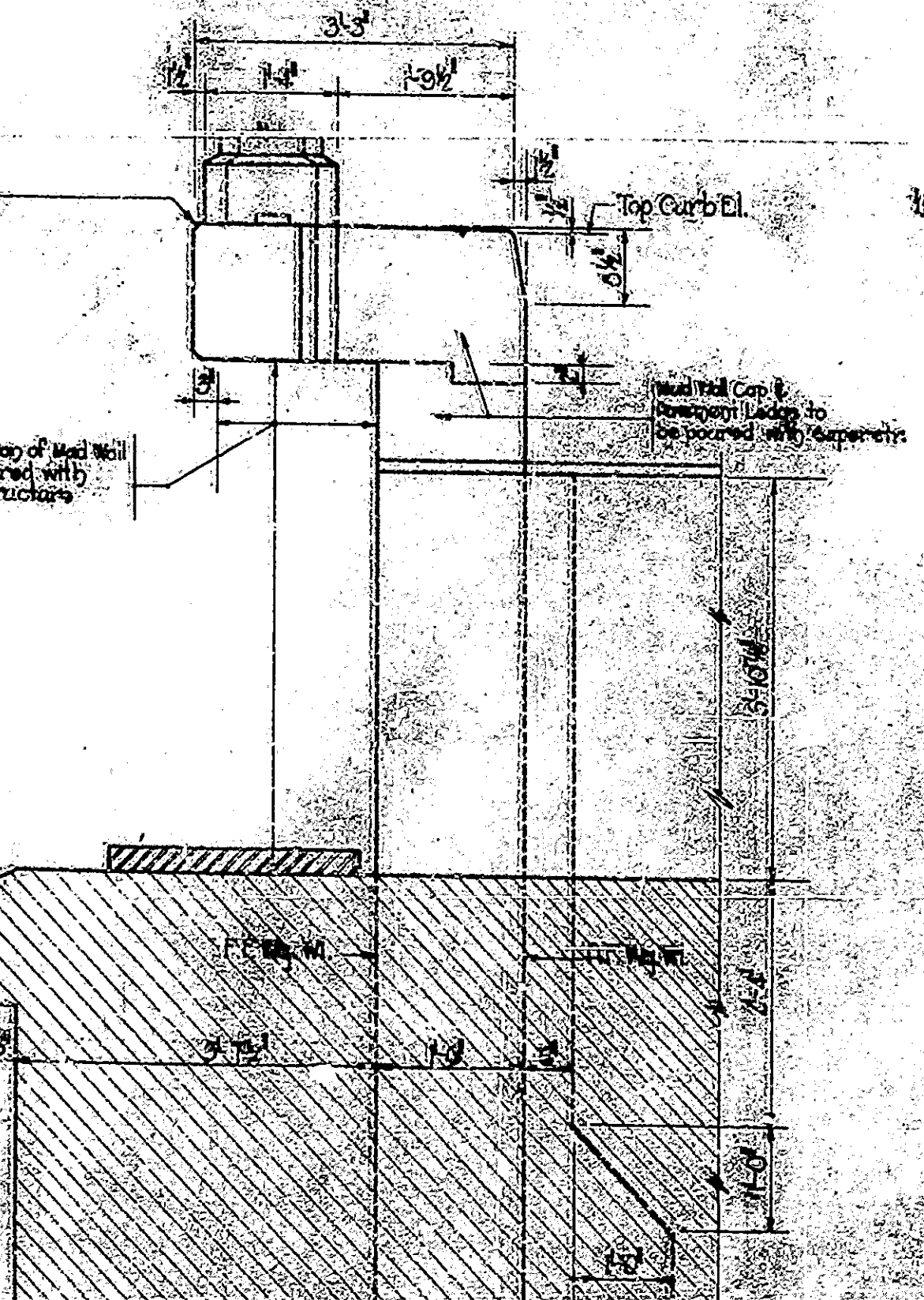


SECTION U-U

END WALL AND SIDEWALL DETAILS

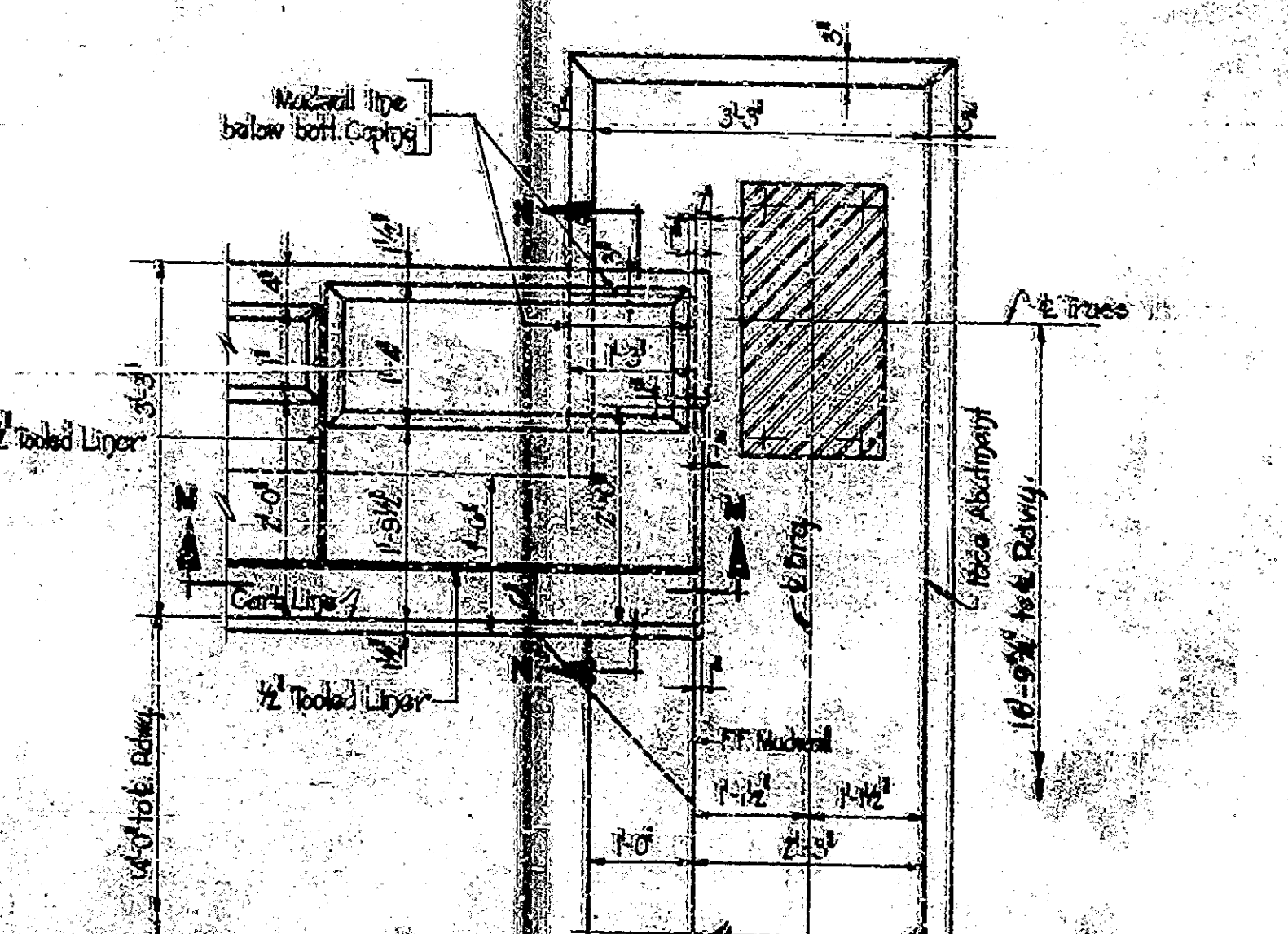


SECTION Q-Q



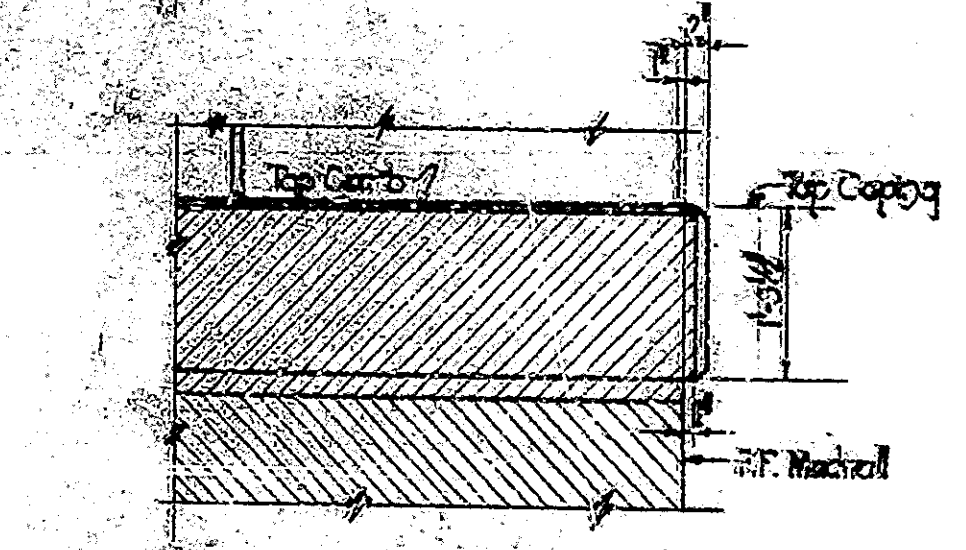
SECTION R-R

DETAILS AT ABUTMENT NO. 2 CORNER

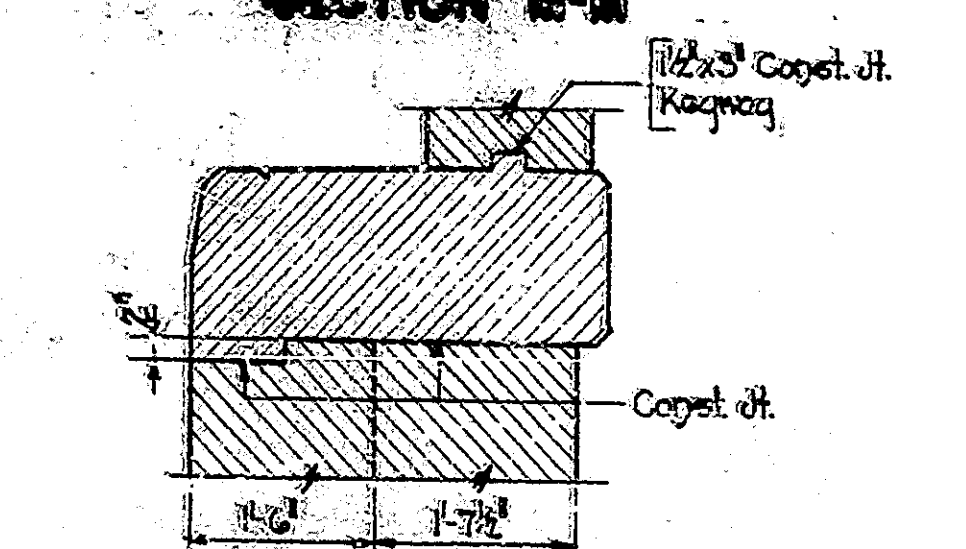


PART PLAN

CORNER DETAILS - ABUT. NO. 1



SECTION M-M



SECTION N-N

DETAILS - ABUTMENTS NO. 1 & NO. 2  
STATE HIGHWAY COMMISSION OF MISSISSIPPI

SCALE: 1/4" = 1'-0" UNLESS NOTED

OCTOBER 15, 1948

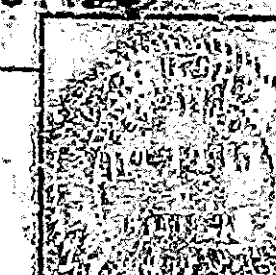
DESIGNED FOR APPROVAL

PROJ. ENGINEER

PREPARED BY

STATION 195+51  
STRUCTURE NO. 2636

BRIDGE CONTRACT NO. 2636









**APPROACH STRUCTURES**

NO.	LOCATION	DESCRIPTION	CLASS. OF CONCRETE VOL. YDS.	REIN. STEEL P.LBS.	CAST IRON WGT. LBS.	REMARKS
1		18" dia. pipe	0.1			No. 10 reinforcement
2		24" dia. pipe	0.1			18" dia. pipe with reinforcement
3		24" dia. pipe	0.1			18" dia. pipe with reinforcement
4		30" dia. pipe	0.3			18" dia. pipe with reinforcement
<b>TOTALS</b>						

**SUMMARY OF MISCELLANEOUS APPROACH QUANTITIES**

ITEM	QUANTITY		ITEM	QUANTITY		ITEM	QUANTITY	
	UNIT			UNIT			UNIT	
Concrete Paving	cu yd.	10.5	Gravel	cu yd.		Sheet Pile - Steel	Lin. Ft.	624
Reinforced Concrete			Gravel			Steel Pipe - 18" dia.	Lin. Ft.	
Cast Iron			Gravel			Steel Pipe - 24" dia.	Lin. Ft.	
Iron			Gravel			Steel Pipe - 30" dia.	Lin. Ft.	

**SUMMARY OF EARTHWORK QUANTITIES**

EXCAVATION					SPEC. FILLING			WIDENING		SEWERING		FRESHING		NIPRAP
CLASS. 1	CLASS. 2	CLASS. 3	CLASS. 4	CLASS. 5	FEET	CY	CU YDS.	CU YDS.	SQ. YDS.	SQ. YDS.	SQ. YDS.	LN. FT.	SQ. YDS.	
						1250	2010	1750	8500					

**SUMMARY OF STRUCTURE QUANTITIES**

ITEM	CONCRETE					REINFORCING STEEL (43.8 STD. WTS.)											STRUCTURAL STEEL	PILES	CAST IRON
	CLASS.	CY		CU YD.		1/2"		3/4"		1"		1 1/4"		1 1/2"		TOTALS			
		CU YD.	CY	CU YD.	CY	LBS.	LBS.	LBS.	LBS.	LBS.	LBS.	LBS.	LBS.	LBS.					
Substructure		10	7.5	10	10	1900	2000	2500	3100	3015	1900			16,500		150			
Superstructure		10	7.5	10	10	1900	2000	2500	3100	3015	1900			16,500		150			
<b>TOTALS</b>		20	15	20	20	3800	4000	5000	6200	6030	3800			33,000		300			

**SUMMARY OF PIPE**

TYPE	SIZE	QUANTITY			
		NO.	WGT.	WAL.	PER.
Cast Iron	24"				
Cast Iron	30"				
Steel	18"				
Steel	24"				

**BARRENNESS BARRENSS, TRAP & SIGNS & LIGHTS**

ITEM	QUANTITY
Barrenness Barrenss	1
Trap	1
Sign	1
Light	1

**QUANTITIES FOR CONCRETE**

ITEM	QUANTITY
Concrete	10.5
Reinforcement	10.5

**BILL OF MATERIALS FOR THICKENED PAVEMENT**



SUMMARY  
 STATE HIGHWAY COMMISSION OF INDIANA

OCTOBER 15, 1945

RECOMMENDED FOR APPROVAL

PROJECT - F-490

STRUCTURE NO. 2694

BRIDGE CONTRACT NO. 2694

END STR