

CONTRACT NO. B-13448

INDEX					
PROJECT	STRUCTURE	TYPE	SPAN	OVER	STATION
F-132-5(6)	67-38-6780	CONT. REINFORCED CONCRETE SLAB	3 SPANS 2'-0, 25'-0, 24'-0	OAKLEY (PERRY) DITCH	82+78
SHEET NO.	SHEET DESIGNATION	SUBJECT			F.H.W.A. APPROVAL
1	ONE SHEET	TITLE & INDEX SHEET			
2	ONE SHEET	TYPICAL CROSS SECTIONS			
3	ONE SHEET	PLAN & PROFILE			
4	ONE SHEET	PAVING DETAILS			
5	ONE SHEET	CONTOUR & GRADING PLAN			
6	ONE SHEET	MISCELLANEOUS TABLES			
7	ONE SHEET	SOIL BORINGS			
8	C1	LAYOUT			
9	C2	GENERAL PLAN			
10	C3	SUPERSTRUCTURE DETAILS			
11	C4	SUPERSTRUCTURE DETAILS & BILL OF MATERIALS			
12	ONE SHEET	EROSION CONTROL			
13	ONE SHEET	BRIDGE SUMMARY			
14	ONE SHEET	BRIDGE ESTIMATE OF QUANTITIES			
15-25	ELEVEN SHEETS	CROSS SECTIONS			

STATE OF INDIANA
INDIANA STATE HIGHWAY COMMISSION

BRIDGE PLANS FOR SPANS OVER 20 FEET ON STATE ROAD NO. 67

PROJECT NO. F-132-5 (A) RE.
(A) R/W
(6) CONST.

BEGINNING AT A POINT APPROXIMATELY 153.00 FEET WEST OF THE NORTHEAST CORNER OF THE NORTHWEST QUARTER OF SECTION 16, T.24 N., R.14 E., THENCE RUNNING EAST ALONG THE NORTH LINE OF SECTION 16 A DISTANCE OF 625.00 FEET TO A POINT APPROXIMATELY 472.00 FEET EAST OF THE NORTHWEST CORNER OF THE NORTHEAST QUARTER OF SECTION 16, T.24 N., R.14 E., ALL IN BEAR CREEK TOWNSHIP, JAY COUNTY, INDIANA.

BRIDGE LENGTH: .013 MI.
ROADWAY LENGTH: .105 MI.
TOTAL LENGTH: .118 MI.
MAX. GRADE: 0.91 %

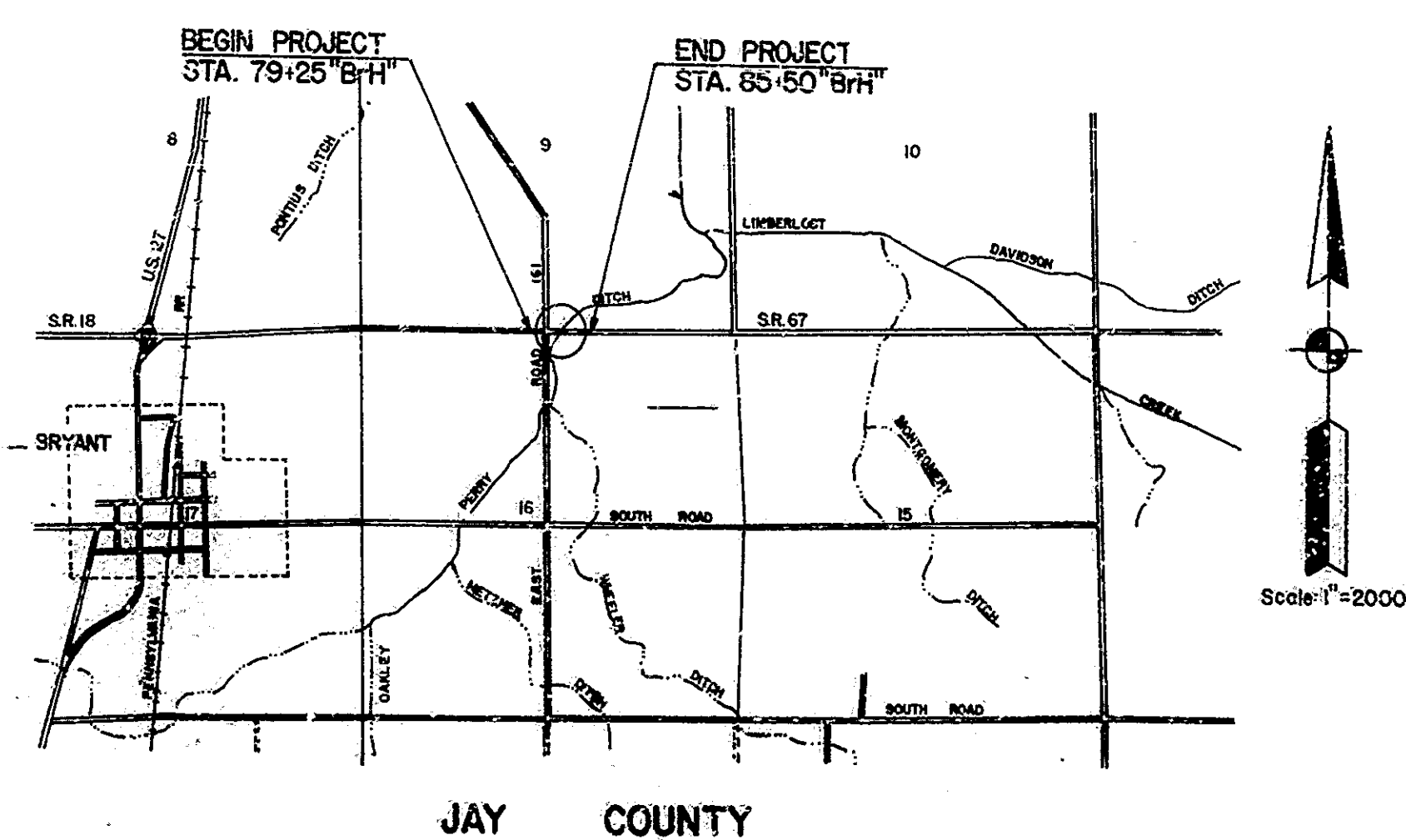
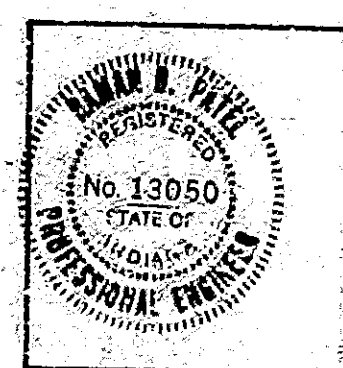
NOTE--
WHENEVER ST-132-5(A) APPEARS IN THESE PLANS OR CONTRACT DOCUMENTS IT SHALL BE INTERPRETED AS F-132-5 (6)

TRAFFIC DATA		S.R. 67
A.D.T. (1980)		2200 V.P.D.
A.D.T. (2000 PROJECTED)		2700 V.P.D.
D.H.V. (2000 PROJECTED)		245 V.P.H.
DESIGN SPEED		D.H.V. 4 & A.D.T. 3%
ACCESS CONTROL		70 M.P.H.

PREPARED & RECOMMENDED BY
REID, QUEBE, ALLISON, WILCOX & ASSOCIATES INC.
INDIANAPOLIS, INDIANA

Raman D. Patel 10-2-80

NOTE--
WHEREVER "INDIANA STATE HIGHWAY COMMISSION" APPEARS IN THESE PLANS, IT SHALL BE INTERPRETED AS "INDIANA DEPARTMENT OF HIGHWAYS" EXCEPT THE 1978 INDIANA STATE HIGHWAY COMMISSION SPECIFICATIONS SHALL BE USED.



FEDERAL REGION NO.	STATE	PROJECT NO.	YEAR	SHEET NO.	TOTAL SHEETS
5	IND.	F-132-5(6)	1980	1	54

INDEX CONTINUED					
SHEET NO.	SHEET DESIGNATION	SUBJECT	F.H.W.A. APPROVAL	ADOPTED REVISION	DATE
26	BRIDGE STD. BR1	ALUMINUM BRIDGE RAILING	12-16-80	R-11-3-80	
27	BRIDGE STD. BR2	ALUMINUM BRIDGE RAILING DETAILS	5-10-79	R-12-1-78	
28	BRIDGE STD. BR3	STEEL BRIDGE RAILING	12-16-80	R-11-3-80	
29	BRIDGE STD. BR4	STEEL BRIDGE RAILING DETAILS	5-10-79	R-12-1-78	
30	BRIDGE STD. BR5	RAILING CONNECTION DETAILS			
31	BRIDGE STD. BR6	RAILING CONNECTION DETAILS			
32	BRIDGE STD. C1	MISCELLANEOUS DETAILS	12-21-81	R-12-1-81	
33	BRIDGE STD. C2	MISCELLANEOUS DETAILS			
34	BRIDGE STD. C3	MISCELLANEOUS DETAILS	12-21-81	R-12-1-81	
35	BRIDGE STD. C4	MISCELLANEOUS DETAILS	12-21-81	R-12-1-81	
36	BRIDGE STD. D	CASTING DETAILS ROADWAY DRAINS	12-21-81	R-12-1-81	
37	BRIDGE STD. D	CASTING DETAILS ROADWAY DRAINS	12-21-81	R-12-1-81	
38	BRIDGE STD. D	CASTING DETAILS ROADWAY DRAINS	12-21-81	R-12-1-81	
39	BRIDGE STD. D	CASTING DETAILS ROADWAY DRAINS	12-21-81	R-12-1-81	
40	BRIDGE STD. D	CASTING DETAILS ROADWAY DRAINS	12-21-81	R-12-1-81	
41	BRIDGE STD. D	CASTING DETAILS ROADWAY DRAINS	12-21-81	R-12-1-81	
42	BRIDGE STD. D	CASTING DETAILS ROADWAY DRAINS	12-21-81	R-12-1-81	
43	BRIDGE STD. D	CASTING DETAILS ROADWAY DRAINS	12-21-81	R-12-1-81	
44	BRIDGE STD. D	CASTING DETAILS ROADWAY DRAINS	12-21-81	R-12-1-81	
45	BRIDGE STD. D	CASTING DETAILS ROADWAY DRAINS	12-21-81	R-12-1-81	
46	BRIDGE STD. D	CASTING DETAILS ROADWAY DRAINS	12-21-81	R-12-1-81	
47	BRIDGE STD. D	CASTING DETAILS ROADWAY DRAINS	12-21-81	R-12-1-81	
48	BRIDGE STD. D	CASTING DETAILS ROADWAY DRAINS	12-21-81	R-12-1-81	
49	BRIDGE STD. D	CASTING DETAILS ROADWAY DRAINS	12-21-81	R-12-1-81	
50	BRIDGE STD. D	CASTING DETAILS ROADWAY DRAINS	12-21-81	R-12-1-81	
51	BRIDGE STD. D	CASTING DETAILS ROADWAY DRAINS	12-21-81	R-12-1-81	
52	BRIDGE STD. D	CASTING DETAILS ROADWAY DRAINS	12-21-81	R-12-1-81	
53	BRIDGE STD. D	CASTING DETAILS ROADWAY DRAINS	12-21-81	R-12-1-81	
54	BRIDGE STD. D	CASTING DETAILS ROADWAY DRAINS	12-21-81	R-12-1-81	
55	BRIDGE STD. D	CASTING DETAILS ROADWAY DRAINS	12-21-81	R-12-1-81	
56	BRIDGE STD. D	CASTING DETAILS ROADWAY DRAINS	12-21-81	R-12-1-81	
57	BRIDGE STD. D	CASTING DETAILS ROADWAY DRAINS	12-21-81	R-12-1-81	
58	BRIDGE STD. D	CASTING DETAILS ROADWAY DRAINS	12-21-81	R-12-1-81	
59	BRIDGE STD. D	CASTING DETAILS ROADWAY DRAINS	12-21-81	R-12-1-81	
60	BRIDGE STD. D	CASTING DETAILS ROADWAY DRAINS	12-21-81	R-12-1-81	
61	BRIDGE STD. D	CASTING DETAILS ROADWAY DRAINS	12-21-81	R-12-1-81	
62	BRIDGE STD. D	CASTING DETAILS ROADWAY DRAINS	12-21-81	R-12-1-81	
63	BRIDGE STD. D	CASTING DETAILS ROADWAY DRAINS	12-21-81	R-12-1-81	
64	BRIDGE STD. D	CASTING DETAILS ROADWAY DRAINS	12-21-81	R-12-1-81	
65	BRIDGE STD. D	CASTING DETAILS ROADWAY DRAINS	12-21-81	R-12-1-81	
66	BRIDGE STD. D	CASTING DETAILS ROADWAY DRAINS	12-21-81	R-12-1-81	
67	BRIDGE STD. D	CASTING DETAILS ROADWAY DRAINS	12-21-81	R-12-1-81	
68	BRIDGE STD. D	CASTING DETAILS ROADWAY DRAINS	12-21-81	R-12-1-81	
69	BRIDGE STD. D	CASTING DETAILS ROADWAY DRAINS	12-21-81	R-12-1-81	
70	BRIDGE STD. D	CASTING DETAILS ROADWAY DRAINS	12-21-81	R-12-1-81	
71	BRIDGE STD. D	CASTING DETAILS ROADWAY DRAINS	12-21-81	R-12-1-81	
72	BRIDGE STD. D	CASTING DETAILS ROADWAY DRAINS	12-21-81	R-12-1-81	
73	BRIDGE STD. D	CASTING DETAILS ROADWAY DRAINS	12-21-81	R-12-1-81	
74	BRIDGE STD. D	CASTING DETAILS ROADWAY DRAINS	12-21-81	R-12-1-81	
75	BRIDGE STD. D	CASTING DETAILS ROADWAY DRAINS	12-21-81	R-12-1-81	
76	BRIDGE STD. D	CASTING DETAILS ROADWAY DRAINS	12-21-81	R-12-1-81	
77	BRIDGE STD. D	CASTING DETAILS ROADWAY DRAINS	12-21-81	R-12-1-81	
78	BRIDGE STD. D	CASTING DETAILS ROADWAY DRAINS	12-21-81	R-12-1-81	
79	BRIDGE STD. D	CASTING DETAILS ROADWAY DRAINS	12-21-81	R-12-1-81	
80	BRIDGE STD. D	CASTING DETAILS ROADWAY DRAINS	12-21-81	R-12-1-81	
81	BRIDGE STD. D	CASTING DETAILS ROADWAY DRAINS	12-21-81	R-12-1-81	
82	BRIDGE STD. D	CASTING DETAILS ROADWAY DRAINS	12-21-81	R-12-1-81	
83	BRIDGE STD. D	CASTING DETAILS ROADWAY DRAINS	12-21-81	R-12-1-81	
84	BRIDGE STD. D	CASTING DETAILS ROADWAY DRAINS	12-21-81	R-12-1-81	
85	BRIDGE STD. D	CASTING DETAILS ROADWAY DRAINS	12-21-81	R-12-1-81	
86	BRIDGE STD. D	CASTING DETAILS ROADWAY DRAINS	12-21-81	R-12-1-81	
87	BRIDGE STD. D	CASTING DETAILS ROADWAY DRAINS	12-21-81	R-12-1-81	
88	BRIDGE STD. D	CASTING DETAILS ROADWAY DRAINS	12-21-81	R-12-1-81	
89	BRIDGE STD. D	CASTING DETAILS ROADWAY DRAINS	12-21-81	R-12-1-81	
90	BRIDGE STD. D	CASTING DETAILS ROADWAY DRAINS	12-21-81	R-12-1-81	
91	BRIDGE STD. D	CASTING DETAILS ROADWAY DRAINS	12-21-81	R-12-1-81	
92	BRIDGE STD. D	CASTING DETAILS ROADWAY DRAINS	12-21-81	R-12-1-81	
93	BRIDGE STD. D	CASTING DETAILS ROADWAY DRAINS	12-21-81	R-12-1-81	
94	BRIDGE STD. D	CASTING DETAILS ROADWAY DRAINS	12-21-81	R-12-1-81	
95	BRIDGE STD. D	CASTING DETAILS ROADWAY DRAINS	12-21-81	R-12-1-81	
96	BRIDGE STD. D	CASTING DETAILS ROADWAY DRAINS	12-21-81	R-12-1-81	
97	BRIDGE STD. D	CASTING DETAILS ROADWAY DRAINS	12-21-81	R-12-1-81	
98	BRIDGE STD. D	CASTING DETAILS ROADWAY DRAINS	12-21-81	R-12-1-81	
99	BRIDGE STD. D	CASTING DETAILS ROADWAY DRAINS	12-21-81	R-12-1-81	
100	BRIDGE STD. D	CASTING DETAILS ROADWAY DRAINS	12-21-81	R-12-1-81	

INDIANA STATE HIGHWAY COMMISSION
STANDARD SPECIFICATIONS DATED 1978
TO BE USED WITH THESE PLANS.

REVISIONS		REVISIONS	
DATE	SHEET NO.	DATE	SHEET NO.
1-22-81	8 and 9		
12-22-81	5, 11, 13 and 14		
1-14-82	1, 2, 4, 9 and 14		

REVISIONS		REVISIONS	
DATE	SHEET NO.	DATE	SHEET NO.

RECOMMENDED FOR APPROVAL

ASSISTANT ENGINEER OF BRIDGE DESIGN,
INDIANA STATE HIGHWAY COMMISSION

RECOMMENDED FOR APPROVAL 10-20-80



APPROVED 2-20-81

CHIEF HIGHWAY ENGINEER - INDIANA STATE HIGHWAY COMMISSION

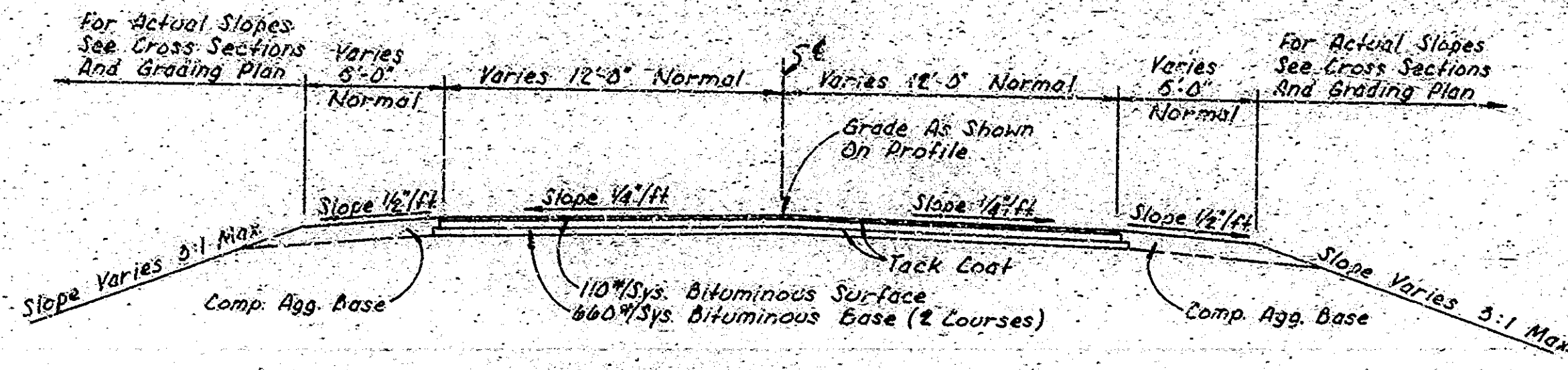
FEDERAL HIGHWAY ADMINISTRATION
DEPARTMENT OF TRANSPORTATION

APPROVED:

DIVISION ADMINISTRATOR DATE

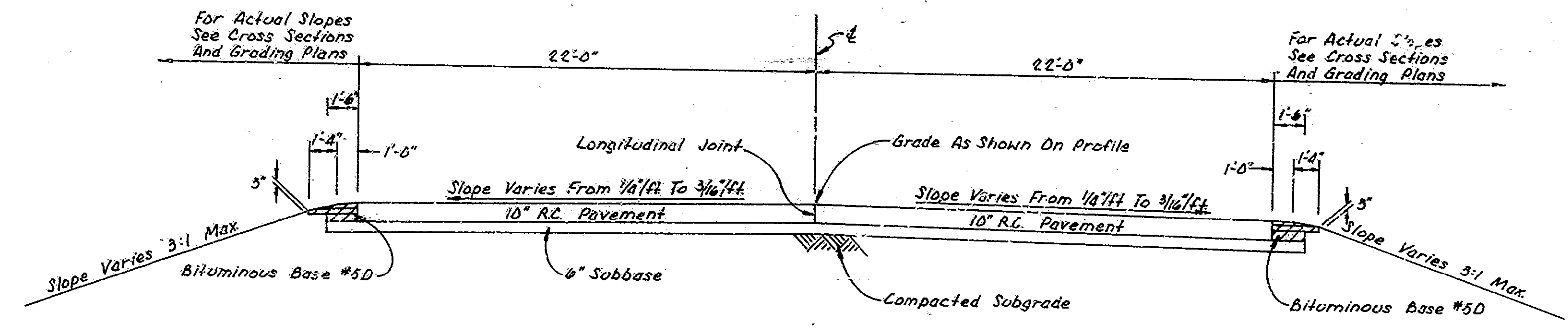
BRIDGE FILE: 67-38-6780

FEDERAL ROAD DISTRICT NO.	STATE	PROJECT NO.	SHEET NO.	TOTAL SHEETS
	IND.	ST-132-5(A)	2	54

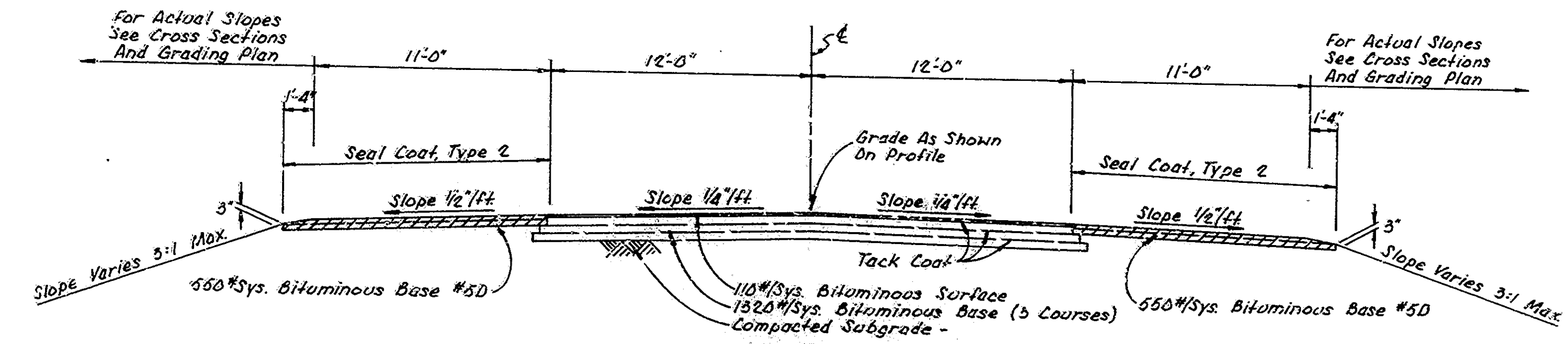


PUBLIC ROAD APPROACH LEFT AND RIGHT
 STA. 0+50 TO STA. 1+88 "PR#1"
 STA. 2+12 TO STA. 3+25 "PR#1"

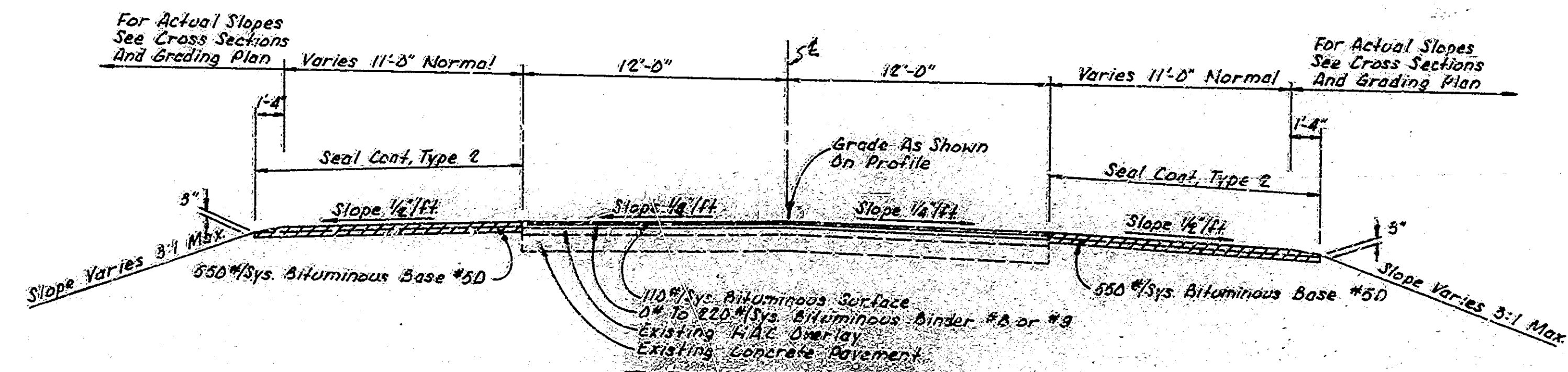
- NOTES**
1. BITUMINOUS SURFACE SHALL BE HOT ASPHALT CONCRETE SURFACE, TYPE "11B".
 2. FOR VARIABLE DIMENSIONS - SEE DETAIL SHEET.
 3. FOR REINFORCED CONCRETE PAVEMENT DETAILS SEE STANDARD PAVEMENT JOINTS SHEET A.
 4. THE QUANTITY CROWN-VETCH SEEDING, SHOWN ON THE ESTIMATE OF QUANTITIES SHEET IS TO BE USED AT THOSE LOCATIONS WHERE THE SLOPES ARE 3:1 OR STEEPER OR IN AN AREA REQUIRING SAND CUT OR SAND FILLS OR AS DIRECTED BY THE ENGINEER.



TYPICAL SECTION
 STA. 82+12.99 TO STA. 82+43.75 "BrH"
 STA. 83+12.25 TO STA. 83+43.01 "BrH"



TYPICAL SECTION
 STA. 80+50 TO STA. 82+12.99 "BrH"
 STA. 83+43.01 TO STA. 84+50 "BrH"



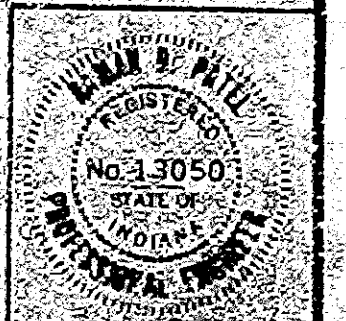
TYPICAL SECTION
 STA. 79+25 TO STA. 80+50 "BrH"
 STA. 84+50 TO STA. 85+50 "BrH"

TYPICAL CROSS SECTIONS

SCALE: 1/4" = 1'-0"

PROJECT NO. ST-132-5(A)
 CONTRACT NO. B-1344B
 BRIDGE FILE NO. 67-38-6780

RECOMMENDED FOR APPROVAL *Ramon B. Ochoa*



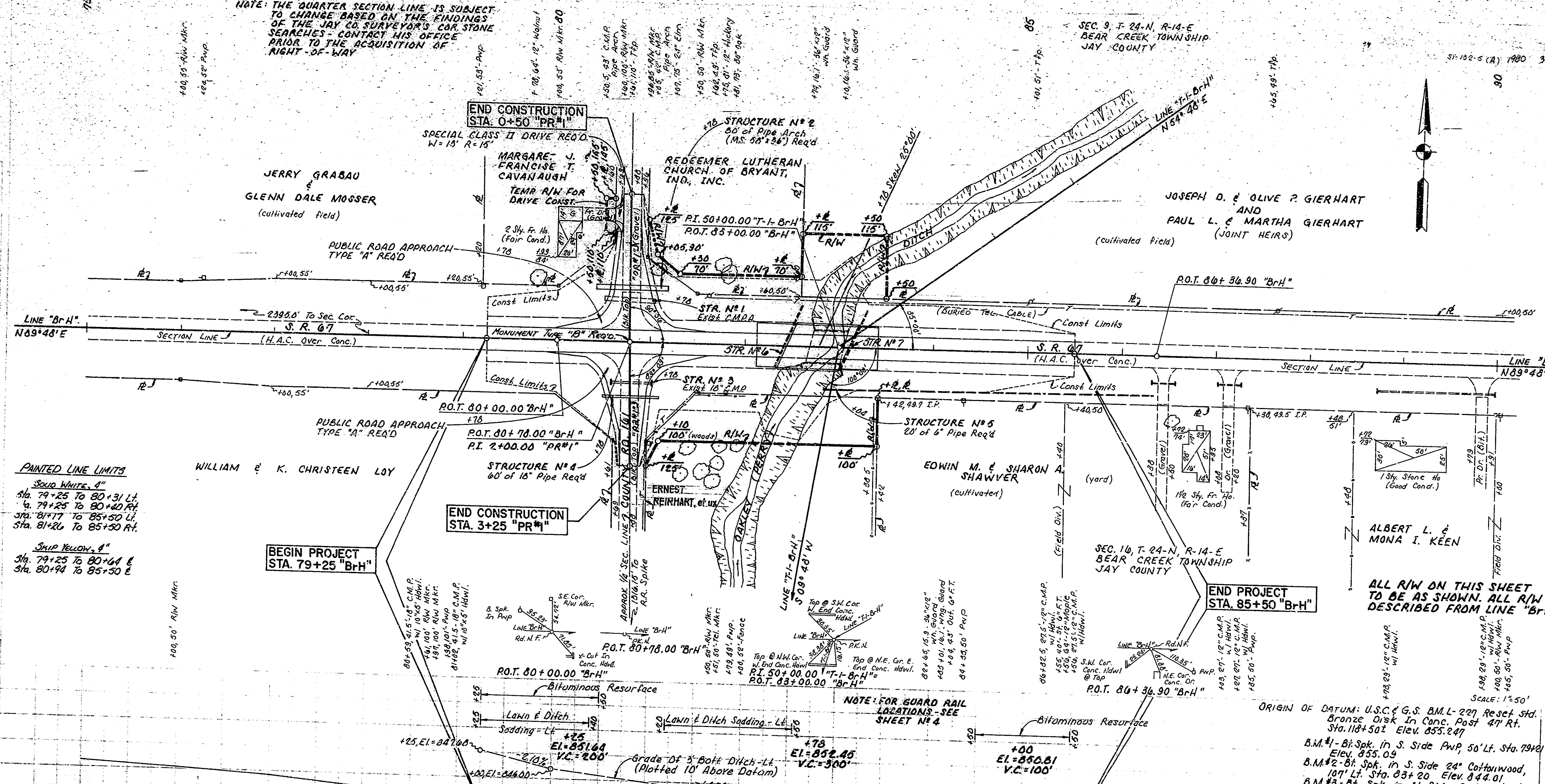
Rev. 1-14-88 "See Special Provisions" removed from Compacted Subgrade.

PROJECT NO.	LINE	SHEET	TOTAL SHEETS
ST-132-5(A)		2	54

NOTE: THE QUARTER SECTION LINE IS SUBJECT TO CHANGE BASED ON THE FINDINGS OF THE JAY CO SURVEYOR'S COR STONE SEARCHES - CONTACT HIS OFFICE PRIOR TO THE ACQUISITION OF RIGHT-OF-WAY

SEC. 9, T. 24-N, R. 14-E BEAR CREEK TOWNSHIP JAY COUNTY

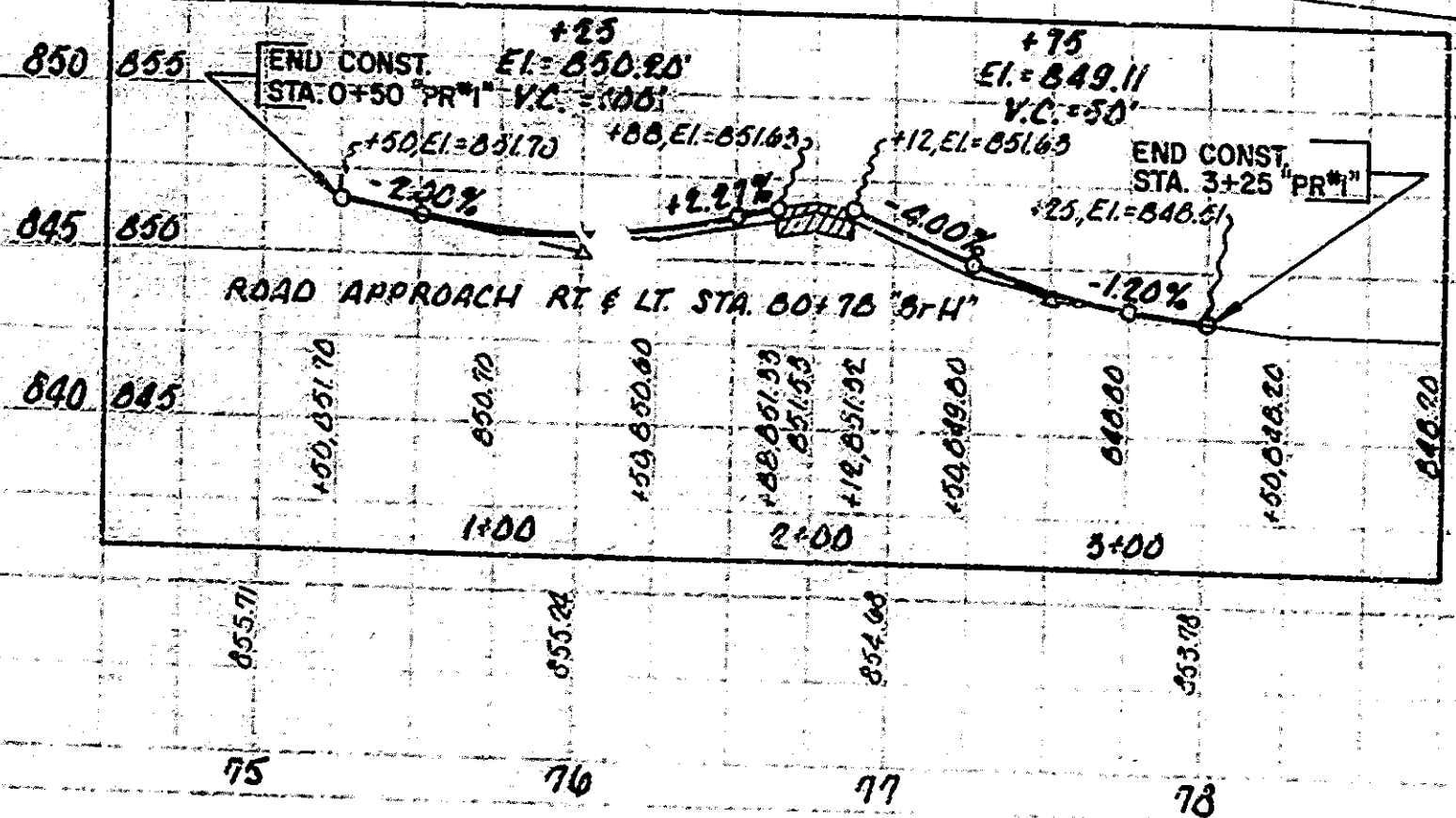
ST-132-5 (A) 1980 3 54



PAINTED LINE LIMITS
 Solid White, 4"
 Sta. 79+25 To 80+31 Lt.
 Sta. 79+25 To 80+40 Rt.
 Sta. 81+17 To 85+50 Lt.
 Sta. 81+26 To 85+50 Rt.
 Strip Yellow, 4"
 Sta. 79+25 To 80+44 E
 Sta. 80+94 To 85+50 E

PLAN
 SCALE: 1" = 40.00'

PROFILE
 SCALE: 1" = 10.00'

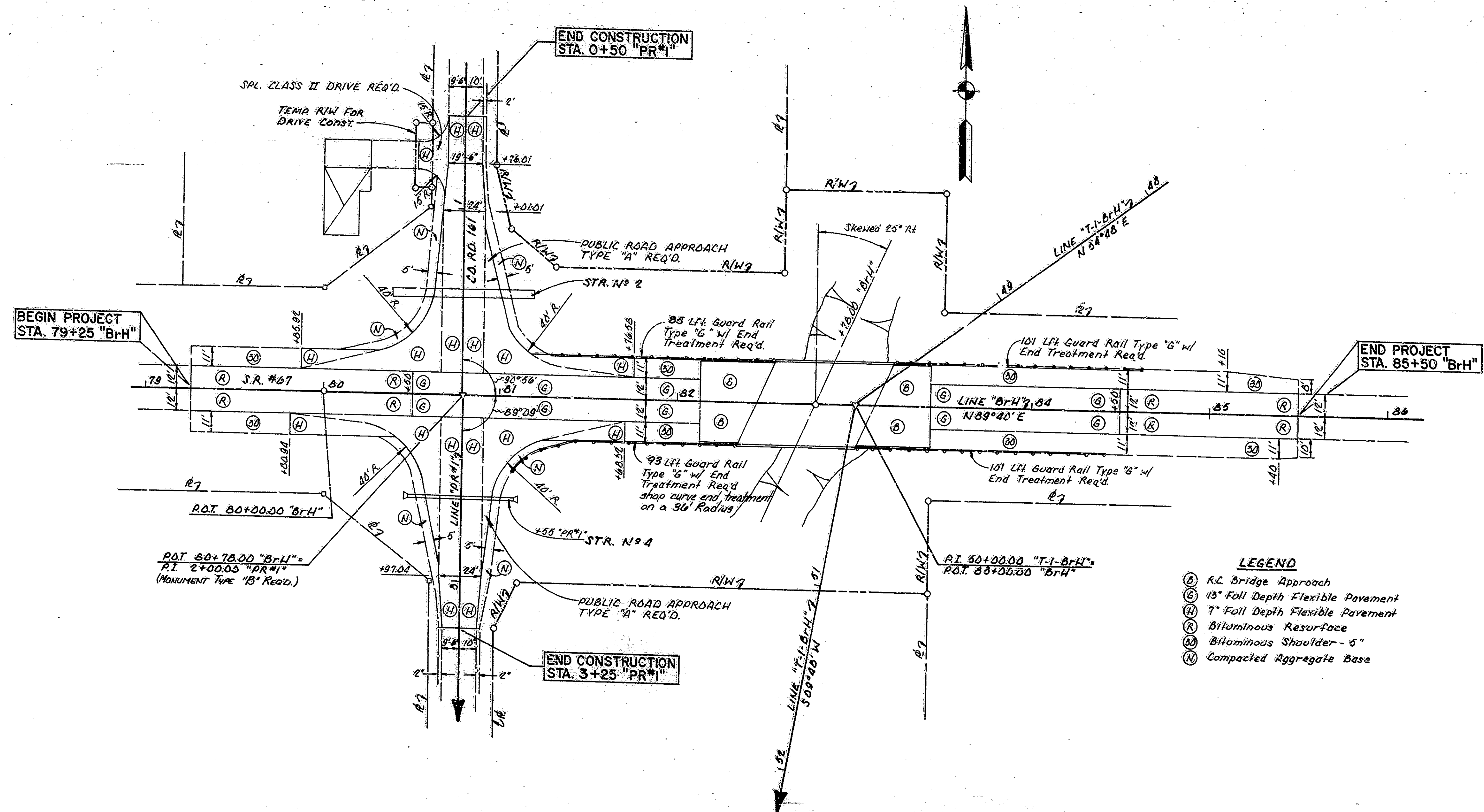


ORIGIN OF DATUM: U.S.C. & G.S. B.M.L-227 Reset Std. Bronze Disk In Conc. Post 47' Rt. Sta. 118+50' Elev. 855.247
 B.M.#1 - Bi Spk. in S. Side PWP 50' Lt. Sta. 79+20 Elev. 855.09
 B.M.#2 - Bi Spk. in S. Side 24" Cottonwood, 107' Lt. Sta. 83+20 Elev. 844.01
 B.M.#3 - Bi Spk. in N. Side PWP 49' Rt. Sta. 92+72 Elev. 847.56

PROJECT NO. ST-132-5(A)
 CONTRACT NO. B-13448
 BRIDGE FILE NO. 67-38-6780



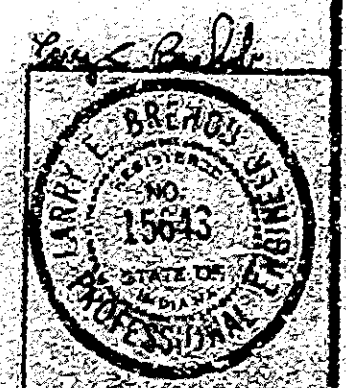
FEDERAL ROAD DISTRICT NO.	STATE	PROJECT NO.	FISCAL YEAR	SHEET NO.	TOTAL SHEETS
5	IND.	37-132-5(A)	1980	4	54



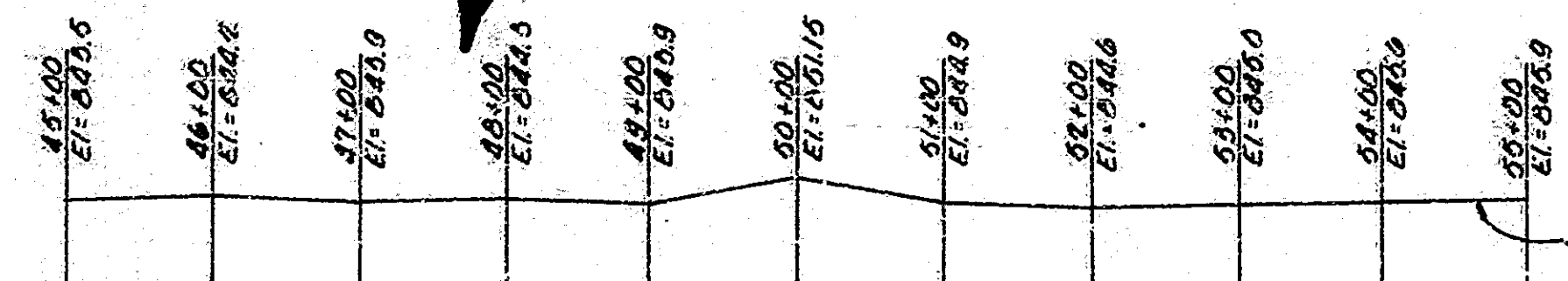
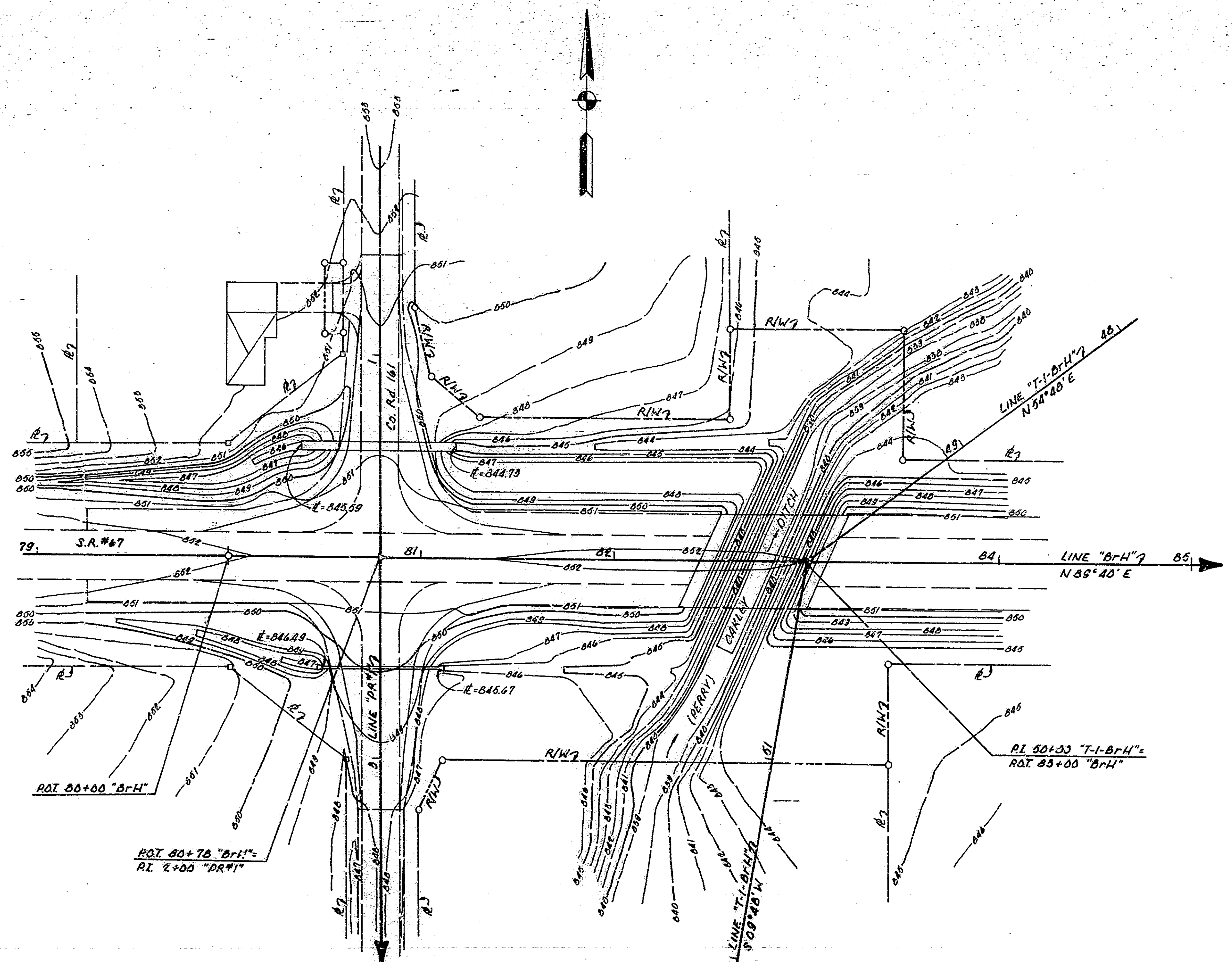
- LEGEND**
- (A) R.L. Bridge Approach
 - (B) 15" Full Depth Flexible Pavement
 - (C) 7" Full Depth Flexible Pavement
 - (D) Bituminous Resurfacing
 - (E) Bituminous Shoulder - 5"
 - (F) Compacted Aggregate Base

**PAVING
DETAILS**
SCALE: 1"=30'

PROJECT NO. - 37-132-5(A)
CONTRACT NO. - B-134-43
BRIDGE FILE NO. - 67-38-6780



FEDERAL ROAD DISTRICT NO.	STATE	PROJECT NO.	FISCAL YEAR	SHEET NO.	TOTAL SHEETS
5	IND.	37-132-5(A)	1980	5	54

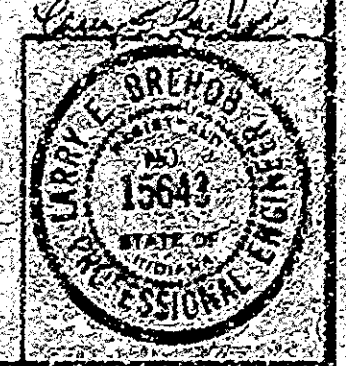


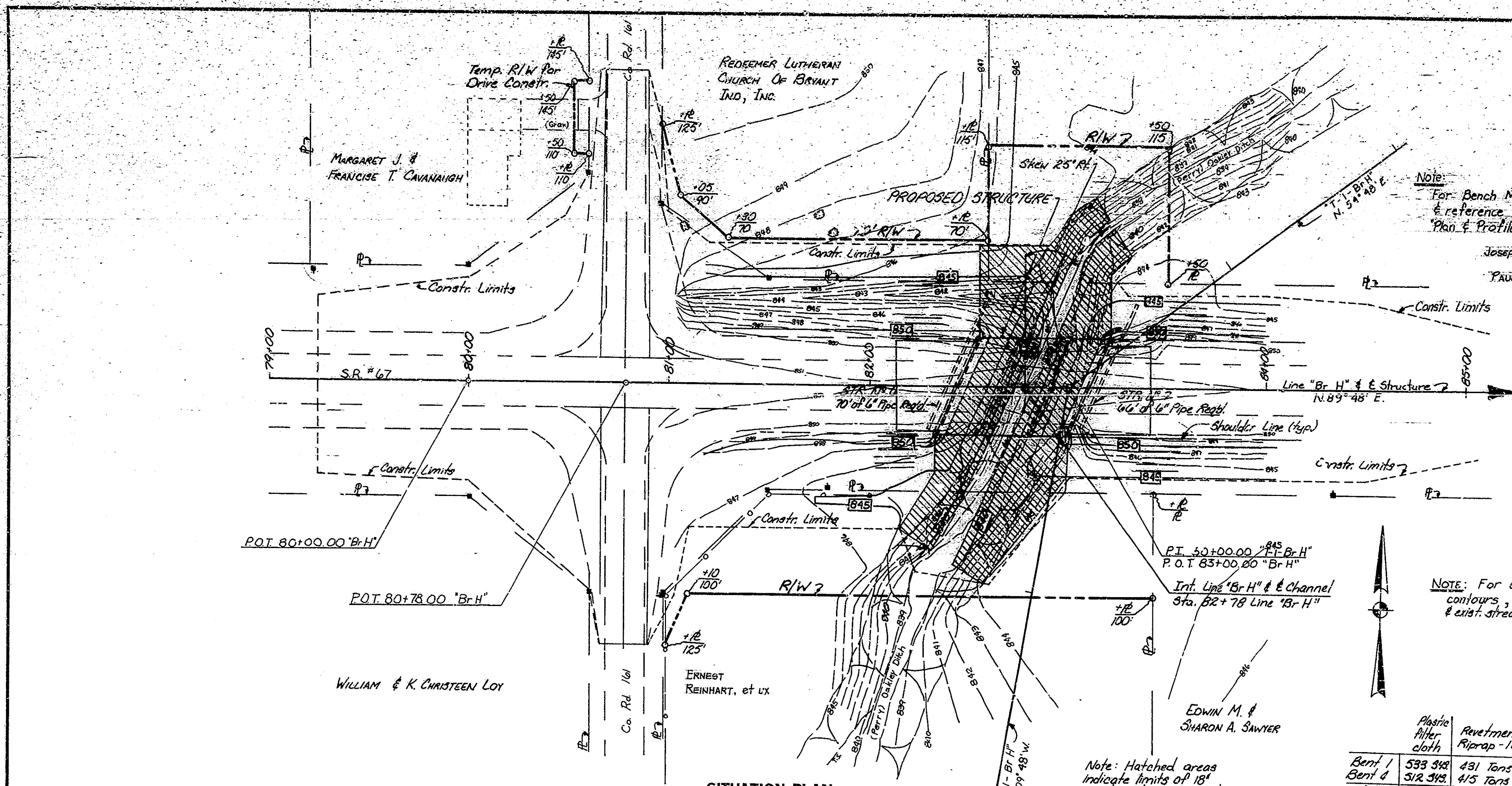
EXISTING STREAM PROFILE
SCALE: 1" = 100'

CONTOUR & GRADING PLAN

SCALE: 1" = 30'

PROJECT NO. 37-132-5(A)
CONTRACT NO. B-13448
BRIDGE FILE NO. 67-38-6780





SITUATION PLAN
SCALE: 1" = 30'-0". CONTOUR INTERVAL = 1 FT.

UTILITY OWNERS
TELEPHONE LINES:
United Telephone Co. of Indiana - Inc.
P.O. Box 391, Warsaw, Ind. 46580
POWER LINES:
Jay County R.E.M.C.
P.O. Box 904, Portland, Ind.

Note:
For Bench Mark data
& reference points, see
Plan & Profile Sheet

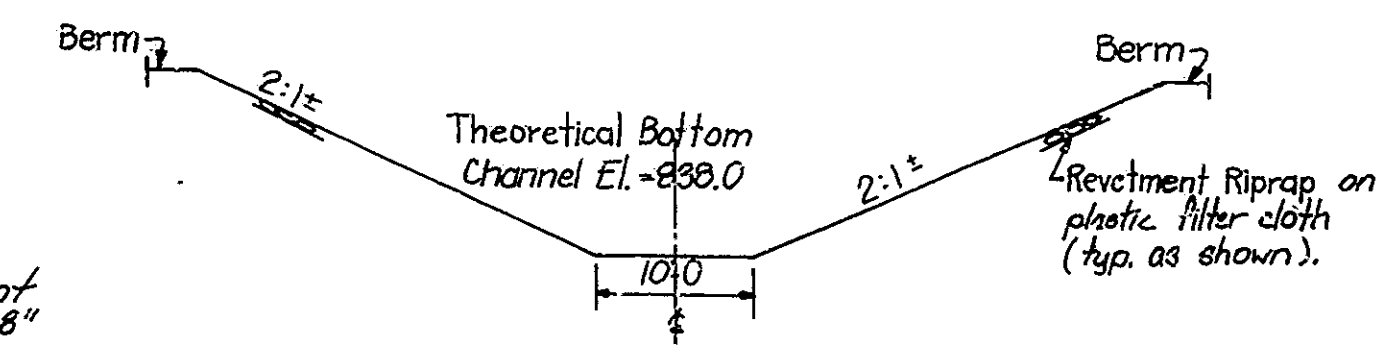
Joseph D. & Olive P. GISHART
Paul L. & Martha GERHART

WATERWAY DATA
Drainage Area = 4.3 Sq. Miles
Design Data (Q 100) = 1000 C.F.S.
Waterway Area Req'd = 500 SFT
Waterway Area Provided = 904 SFT
High Water El. (1927) = 848.4
El. (Q 100) = 848.4

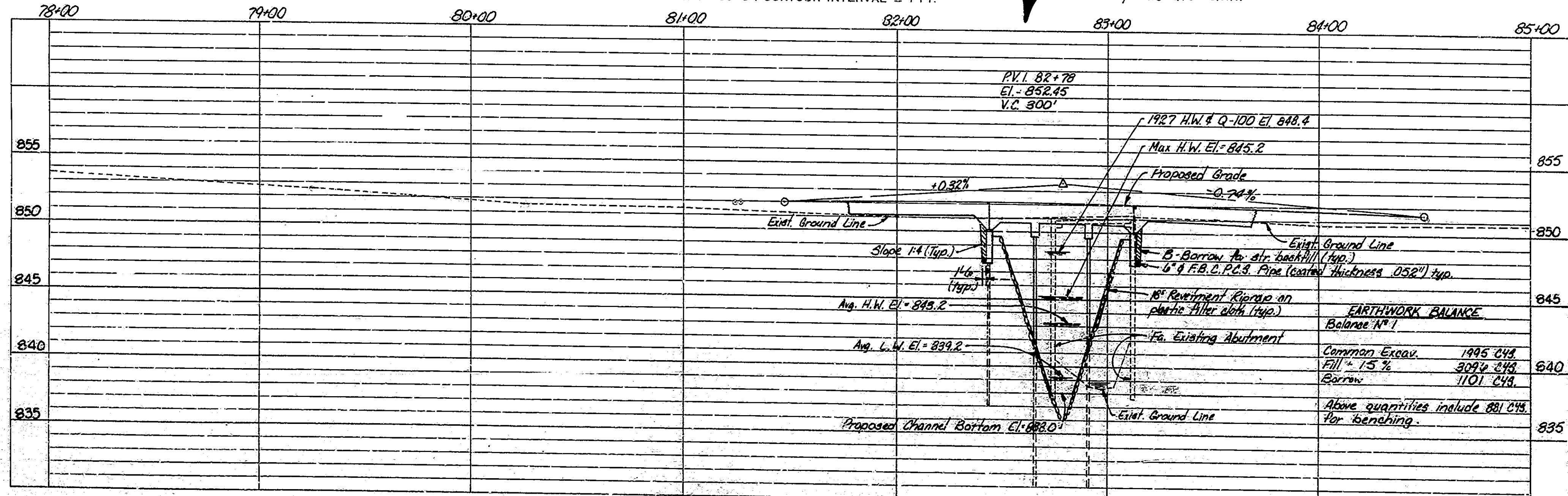
Sediment Trap req'd. Method
"A" see Sheet 12.

NOTE: For additional
contours, channel information
& exist. stream profile see sheet 5.

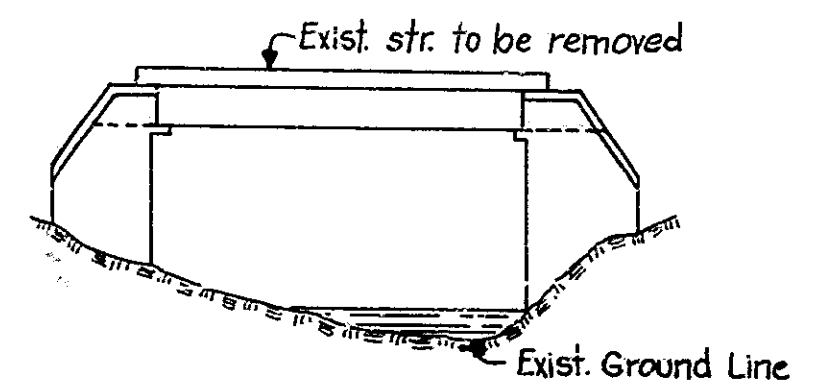
	Plastic Filter cloth	Riprap - 18"
Bent 1	533 3/4	431 Tons
Bent 4	318 3/4	415 Tons
Totals	1045 3/4	846 Tons



SECTION THRU CHANNEL 1 TO CHANNEL 4
(UNDER PROPOSED STRUCTURE)
No Scale



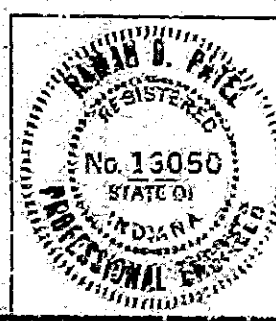
PROFILE ON PROPOSED ROADWAY
SCALES: HORIZ. 1" = 30'-0" VERT. 1" = 5'-0"



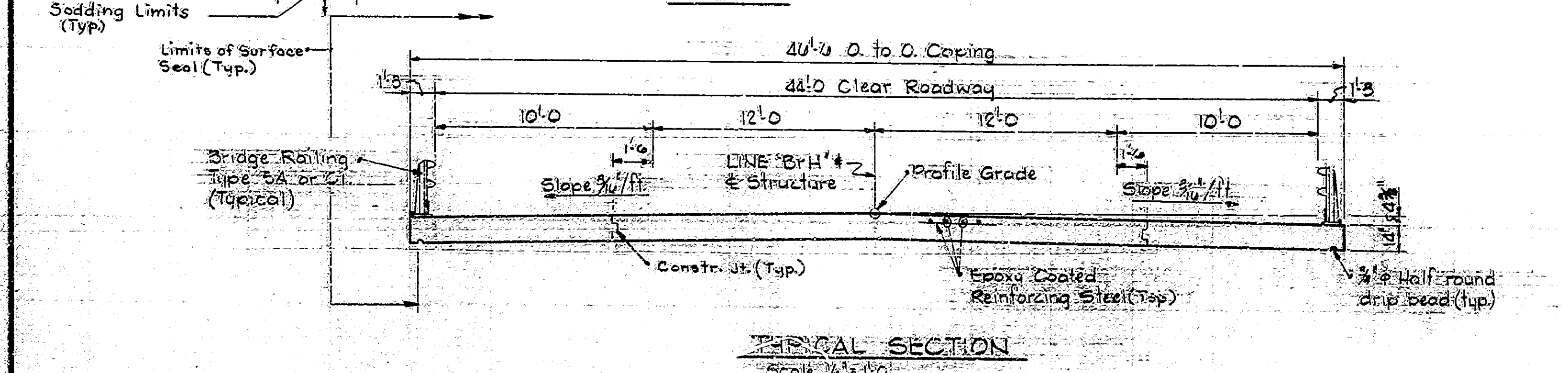
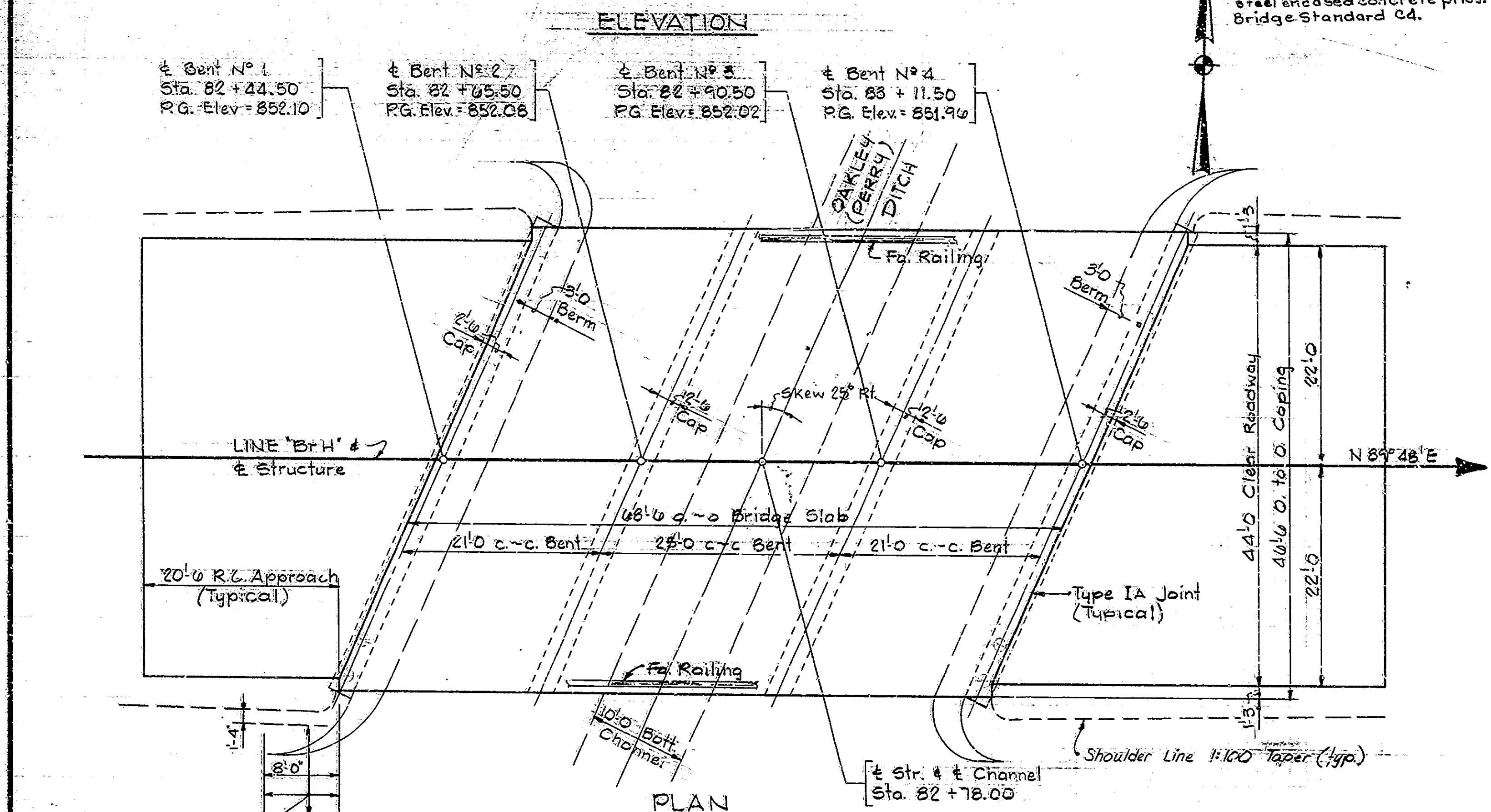
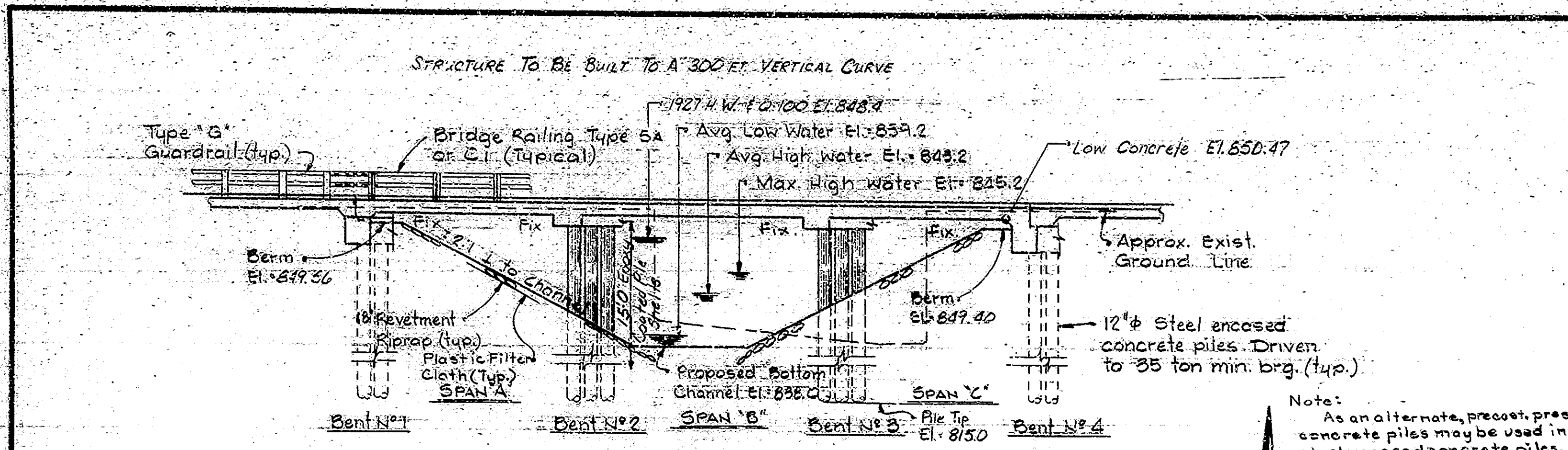
ELEVATION - EXISTING STRUCTURE
No Scale

LAYOUT
CONTINUOUS REINFORCED CONCRETE SLAB BRIDGE
3 SPANS - 21'-0", 25'-0", 21'-0" SKEW 25° RT
44'-0" CLEAR ROADWAY, SR 67, OVER OAKLEY (PERRY) DITCH
INDIANA STATE HIGHWAY COMMISSION
JAY COUNTY

SCALE: -AS NOTED DATE: 1980
SUBMITTED FOR APPROVAL: [Signature]
DRAWING: CI OFC4 SHEET: 8 OF 54
PROJECT: ST-132-5(A) STATION: -
BRIDGE CONTRACT NO. B-1344B
BRIDGE FILE: 67-39-6780



DRAWN: J.E.F. C.M.D. JUN 2-79
DESIGNED: J.P.F. C.M.D.
TRACED: C.M.D.



DESIGN DATA

Designed for HS20-44 loading in accordance with 1977 A.A.S.H.O. Specifications & inferences.
Dead Load: Actual load plus 35#/sq. Ft. for future wearing surface.

GENERAL NOTES

Existing structure is a single span precast beam to be removed. 28' 0" clear span, 31' 0" clear roadway.
Piles shall have minimum bearing value shown on the detail drawings. Determine pile lengths by Article 701.02 (A) of the specifications.
For details of steel encased concrete piles, or prestressed concrete piles as an alternate, see Bridge Standard C4 & applicable articles in the specifications.
Reinforcing steel covering shall be 2 1/2" in top & 1" min. in bottom of floor slab & 2" in all other parts, unless noted.
Concrete in superstructure to be Class C.
Continuous concrete pours shall be required between construction joints as shown on the detail drawings.
Chamfer exposed edges 1/2" unless noted.

Surface seal entire top of slab, coping to drip beads as shown on the detail drawings.
Riprap at locations shown on the "Layout".
Tolerance in position of pile heads, maximum 2".

Excavation quantities as shown include estimated excavation for public & private approaches. See table on sheet # 8.

STANDARD DRAWINGS

BRIDGE	ROAD	PROCESS
BR 1		ALUMINUM RAILINGS - TYPE BA
BR 2		ALUMINUM RAILINGS - DETAILS
BR 3		STEEL RAILING - TYPE C1
BR 4		STEEL RAILING - DETAILS
C1		PILES, BRG. & BEE NOTES
C2		TEMP. JIA JOINT
C4		PRESTRESSED PRECAST CONC. PILES
A		STD. JOINTMENT JOINTS
MA		R.C. APPROACH DETAILS
MB		B BOTTOM DITCH
ME1		MISC. PIPE DETAILS
ME2		PIPE END SECTIONS
MH1		MISC. ENTRANCE DETAILS
MI		ROAD APPROACH DETAILS
MN		STRUCTURE BACKFILL
MP		MISC. PIPE DETAILS
CB2		TEMP. ZONE BARRIER
GR2		GLASS # GUARDRAIL
GR5		ALUMINUM GUARDRAIL DETAILS
GR10		STEEL TUBE GUARDRAIL DETAILS
GR10		GUARDRAIL - BUREAU TERMS
GR12A		BEARING WALL - CUREL TERMINAL
SHT. 1		STANDARD DETODS SIGNS
SHT. 2		STANDARD DETODS SIGNS
SHT. 3		STANDARD DETODS SIGNS
SHT. 3A		STANDARD DETODS SIGNS
SHT. 4		STANDARD DETODS SIGNS
SHT. 5		STANDARD DETODS SIGNS
SHT. 6		STANDARD DETODS SIGNS
SHT. 7		STANDARD DETODS SIGNS
MP1		Drain Tile Classes

GENERAL PLAN

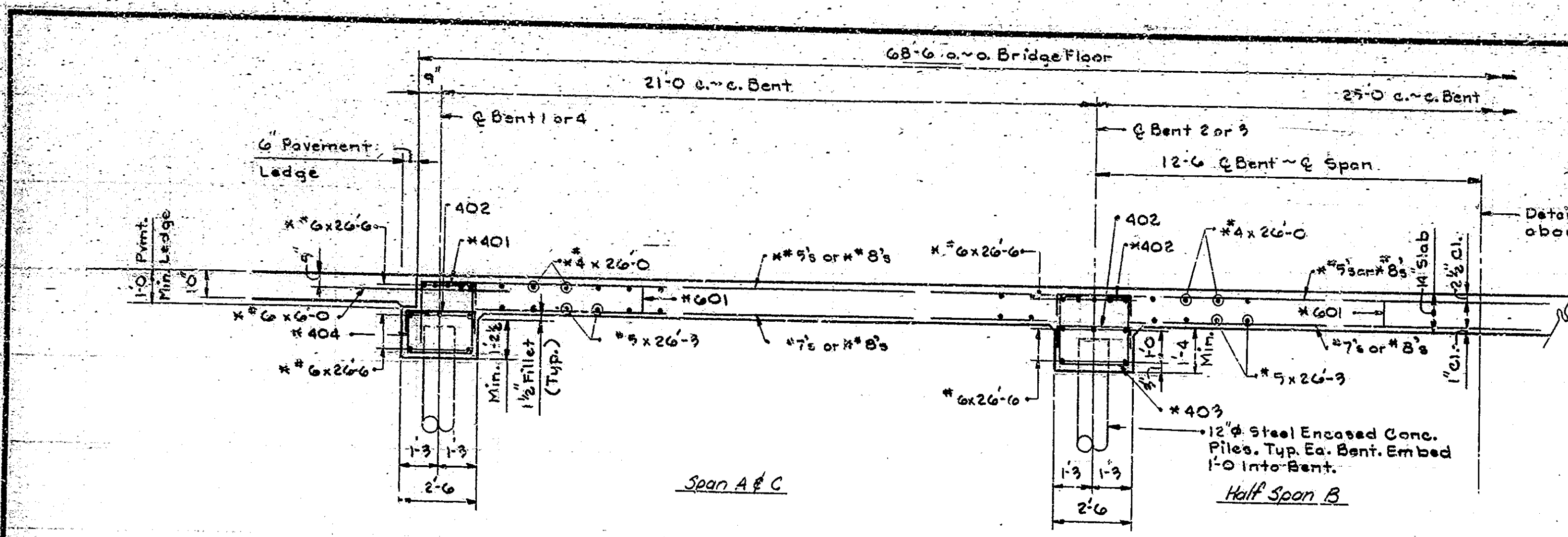
CONTINUOUS REINFORCED CONC. SLAB BRIDGE
3 SPANS: 21'-0", 25'-0", 21'-0" SKEW 25° RT.
44'-0" CLEAR ROADWAY
S.R. 67 OVER PERRY DITCH
INDIANA STATE HIGHWAY COMMISSION
JAH COUNTY

SCALE: 1/8" = 1'-0" Unless Noted DATE: OCTOBER 2, 1980
SUBMITTED FOR APPROVAL: *Ramon S. P. O.*

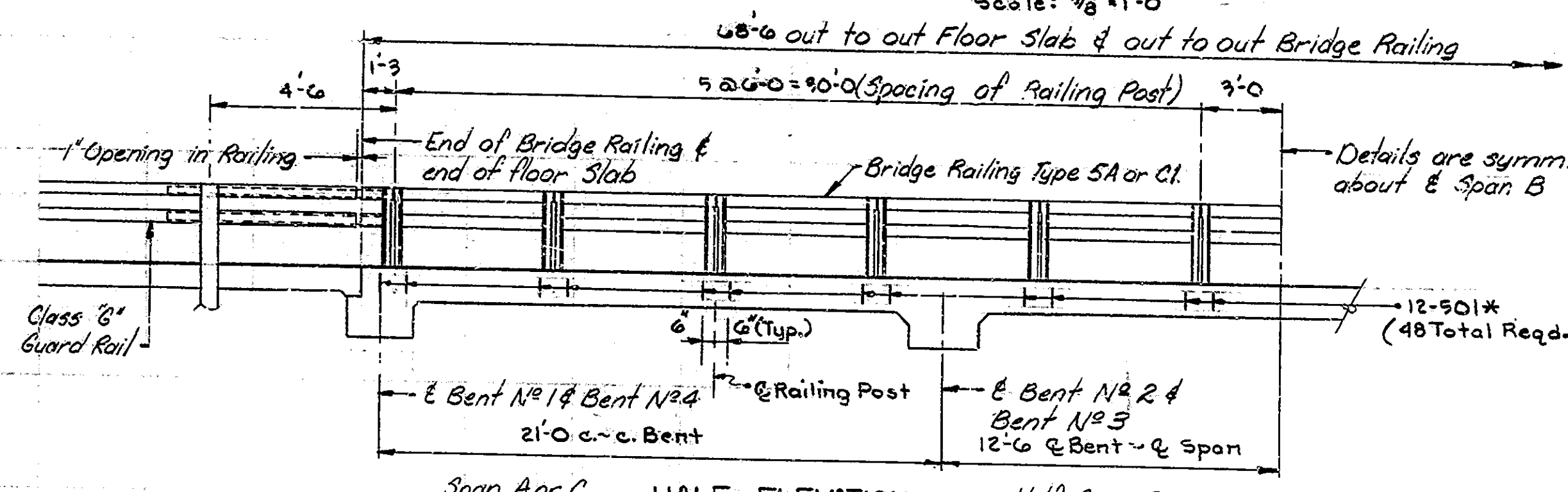
DRAWING: C2 OF C4 SHEET: 9 OF 54
PROJECT: ST-132-5(A)
CONTRACT NO. B-1344B
BRIDGE FILE: 03-36-0180



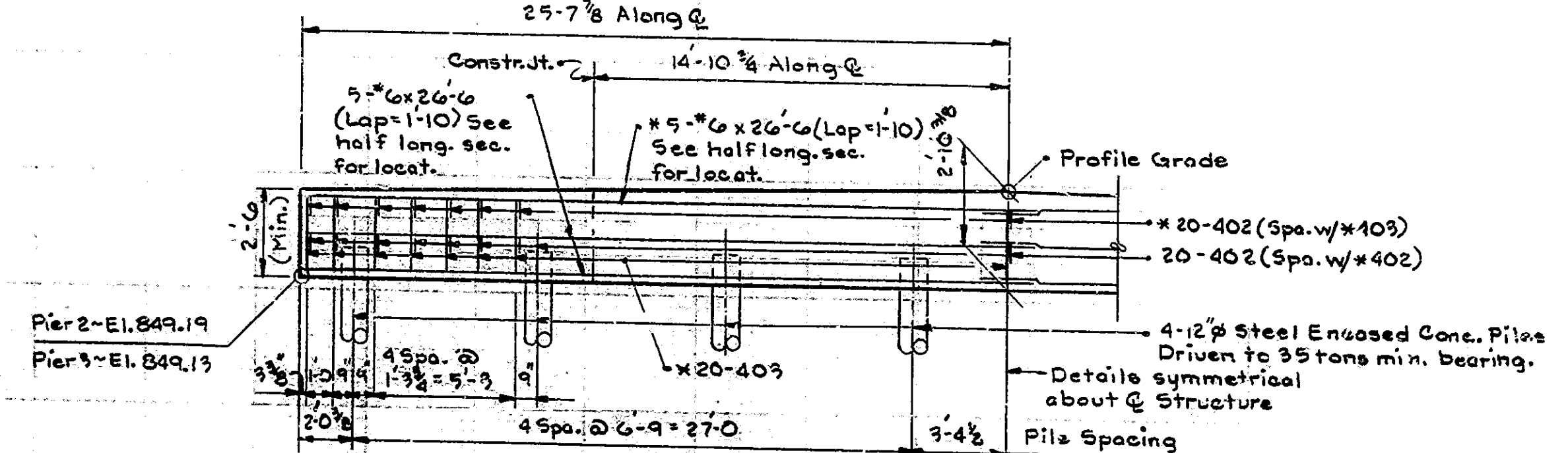
Rev. 12-22-81 Length of epoxy coating on pile shells. General Notes, four notes removed.
Rev. 1-14-82 B. Sodding limits added, R.C. Std. MP1 added.



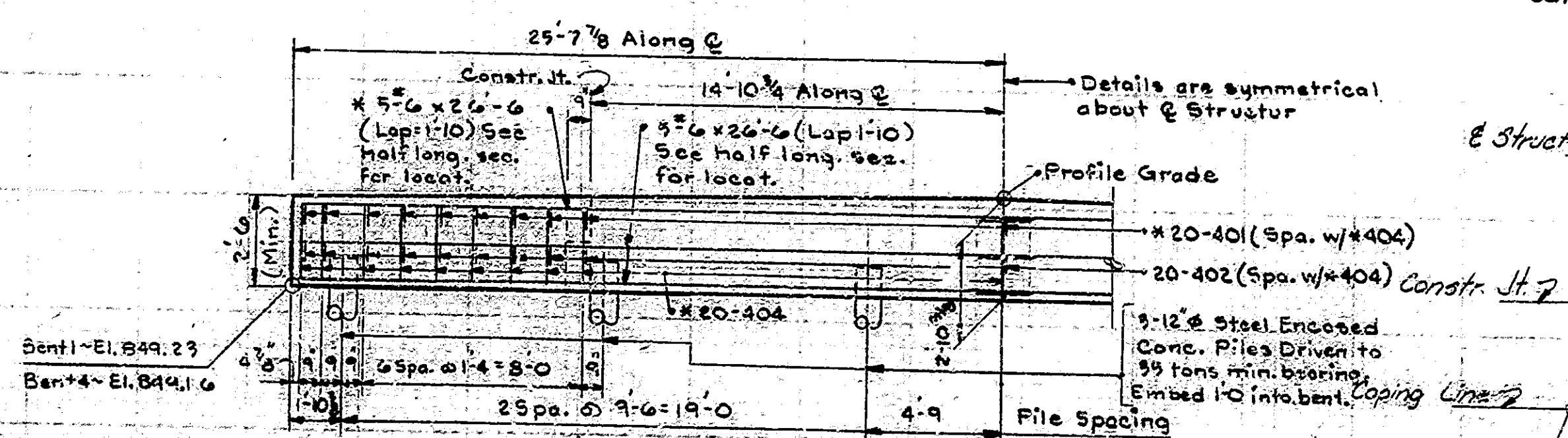
HALF LONGITUDINAL SECTION
Scale: 3/8"=1'-0"



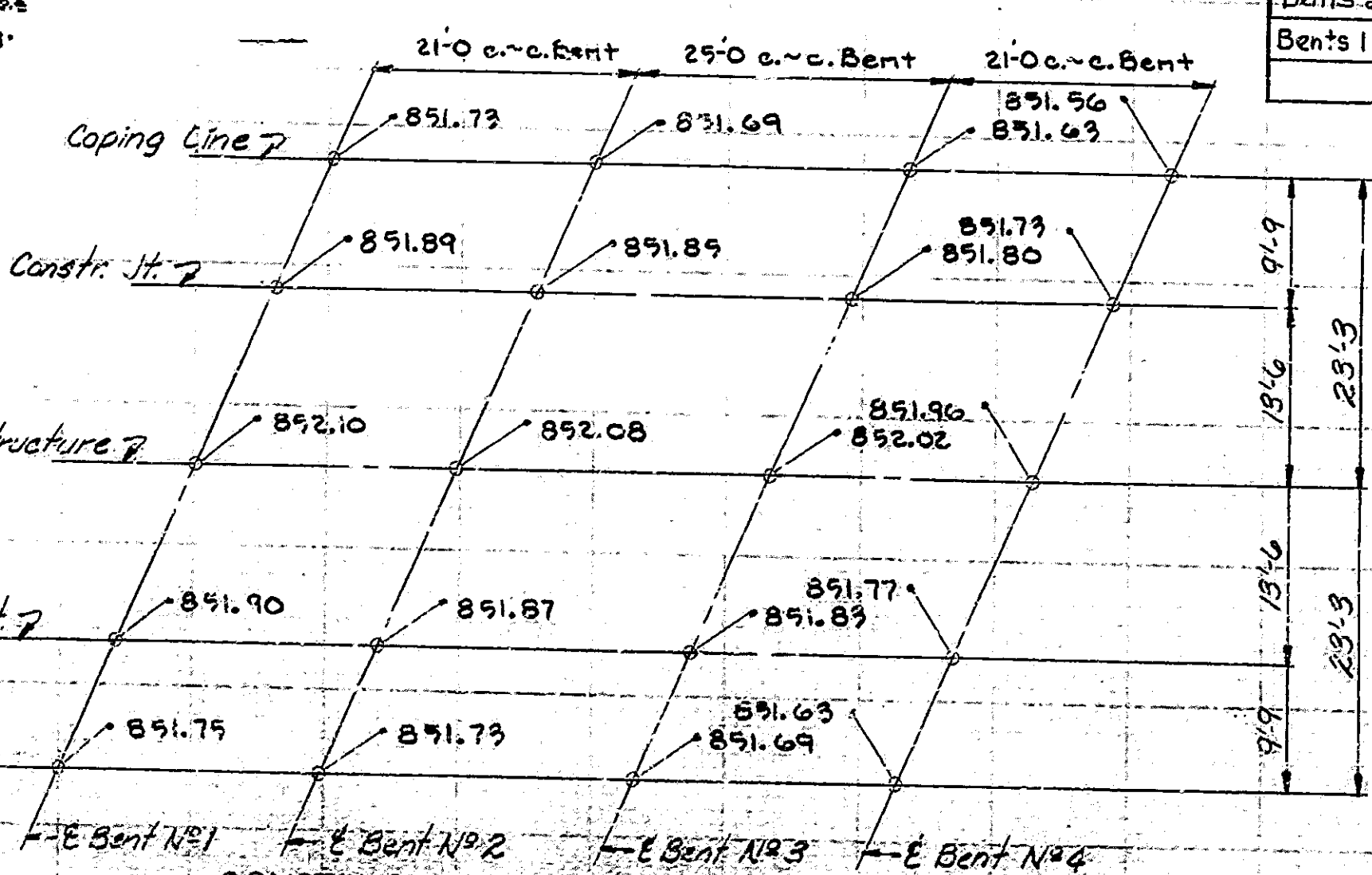
HALF ELEVATION
Scale: 1/4"=1'-0"



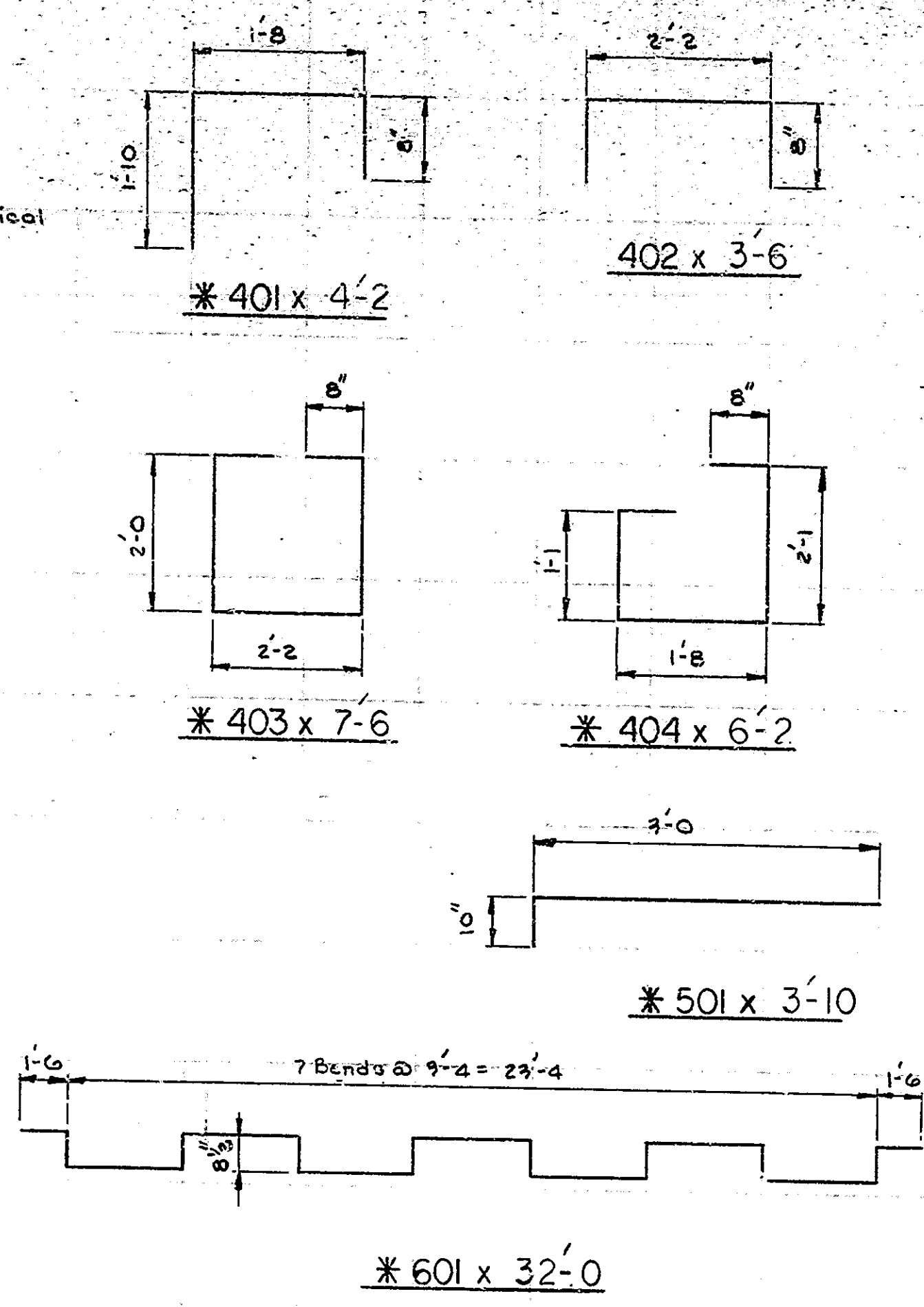
HALF ELEVATION BENT NO 2 OR 3
Scale: 1/4"=1'-0"



HALF ELEVATION BENT NO 1 OR 4
Scale: 1/4"=1'-0"



CONSTRUCTION ELEVATION
No. Scale



BILL OF MATERIALS

REINFORCING STEEL			
SIZE AND MARK	NO. OF BARS	LENGTH	WEIGHT
*#6	12	35'-6"	
**#8	12	35'-0"	
*#8	88	19'-0"	
**#8	176	12'-0"	
* Total E.C.#8			6760
Total #8			5602
*#7	135	24'-3"	
*#7	44	17'-0"	
Total #7			8220
*#601	24	32'-0"	
**#6	40	26'-6"	
*#6	40	26'-6"	
**#6	118	6'-0"	
* Total E.C.#6			3809
Total #6			1992
*#501	48	3'-10"	
**#5	90	34'-9"	
*#5	122	26'-3"	
* Total E.C.#5			3454
Total #5			3340
*#401	78	4'-2"	
*#402	78	3'-6"	
#402	156	3'-6"	
*#403	78	7'-6"	
*#404	78	6'-2"	
**#4	122	26'-0"	
* Total E.C.#4			3230
Total #4			3669
* Total E.C. Reinf.			17253
Total Reinf.			19119
CLASS "C" CONCRETE QUAN.			
Pour 1			48.7 cys.
Pour 1 Rt.			17.3 cys.
Pour 2			48.9 cys.
Pour 2 Lt.			17.3 cys.
Pour 2 Rt.			17.4 cys.
Total Class "C" in Superstr.			166.9 cys.

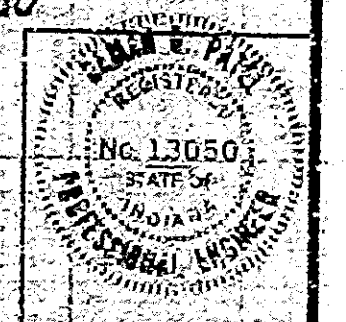
MISCELLANEOUS	
Surface Seal (Est. Quantity)	3427 SFT.
Type SA or CI Bridge Railing	137 LFT.
28" 12" x 7" 6" Steel Encased Concrete Piles @ 35' Ea.	
Bents 2 & 3: 15' Pile Epoxy Coated	240 LFT.
Bents 2 & 3: 20' Pile Mat Epoxy Coated	320 LFT.
Bents 1 & 4: 12' Pile Not Epoxy Coated	420 LFT.

Notes:
* indicates Epoxy Coated Reinf.
For additional notes & details, see Dwg. C3.
For Reinf. Bar Notes, see Br. Steel C1.

SUPERSTRUCTURE DETAILS &
BILL OF MATERIALS
INDIANA STATE HIGHWAY COMMISSION

SCALE: AS NOTED DATE: OCTOBER 2, 1960
SUBMITTED FOR APPROVAL: *Ramond Sales*

DRAWING: C 4 OF C 4 SHEET: 11 OF 54
PROJECT: 15T-132-5(A)
CONTRACT NO: B-1344B
BRIDGE FILE: 67-38-6780



Rev. 12-22-81. Length of epoxy coated pile shells and method of billing steel encased concrete piles. (Estimated Quantity) added for surface seal.

ITEM	CONCRETE				STRUCTURE										QUANTITIES										
	CLASS C	CLASS A	CLASS B	CLASS P	CONCRETE RAILWAY CLASS C	REINF. STEEL TOTAL	STRUCT. STEEL ***	EPOXY COATED REIN. STEEL	ANCHOR PLATES PK-AP	12" PILES				CAST IRON DRAIN PIPE	CAST IRON GRATES, BASINS & FITTINGS	RAILING TYPE SA OR CI	EXP. JOINT TYPE	EXP. JOINT CLASS	CONC. STR. MEMBERS			BITUM. MIXTURE FOR APPROACHES TONS	MOD. PC. CONCRETE SURFACE CU. YDS	DECK DRAIN EACH	SURFACE SEAL SQ. FT.
	SUPERSTR. CU. YDS.	SUBSTR. CU. YDS.	ABOVE FTG. CU. YDS.	IN FTG. CU. YDS.						UNTREATED TIMBER NO.	TREATED TIMBER NO.	STEEL ENCASED PILES NO.	EMPTY SHEETS NO.						BOX BEAMS TYPE SQ. FT.	I BEAM TYPE LIN. FT.	APPLIED SURF. ANTI-SLIP SQ. FT.				
BENT #1																									
BENT #2																									
BENT #3																									
BENT #4																									
SUPERSTRUCTURE	166.9					14.14		17253																	
TOTALS	166.9					23,934		17,253				22	740	16	240		137								3,427

Reinf. Steel for Approach Structures
 Reinf. Steel for R.C. Bridge Approaches
 Reinf. Steel for Lip Gutter, Pavmt., Topers, etc.

BRIDGE FILE STRUCT. NO.	LOCATION	APPROACH DESCRIPTION		STRUCTURES			REMARKS
		SIZE	KIND	CONCR. CL. A IN STRS. CU. YDS.	REINF. STEEL LBS.	PIPE END SEC. EACH	
See Sheet No. 6 for Quantities in this table.							
TOTALS							

Total of Reinforcing Steel Carried to "Structure Quantities"

L.T. OR RT.	STATION TO STATION	PAVED SIDE DITCH & SODDING SUMMARY											
		PAVED SIDE DITCH (LIN. FT.)					SODDING (SQ. YD.)						
		TYPE	PAY LENGTH	NO. OF LUGS	PAY LENGTH	CUT OFF WALLS	PAY LENGTH	TOTAL PAY LENGTH	FOR PSD	FOR DITCHES	SHOULDERS	OTHER	TOTAL SOD
See Sheet No. 6 for Quantities in this table.													

* Estimated Quantity, See the Special Provisions.

LOCATION		APPROACH TABLE															
L/T/RT	STATION	DESCRIPTION	WIDTH		GRADE	LENGTH	DIST. FROM	EXCAVATION (CY)		BITUM. SURFACE		BITUM. BINDER		BITUM. BASE		COMP. AGG. BASE	
			FT.	RADII FT.				FT.	%	FT.	FT.	CUT	FILL	#/SQ. YD.	TONS	#/SQ. YD.	TONS
See Sheet No. 6 for Quantities in this table.																	

REVISIONS	
DATE	ITEM
10-22-81	Steel Encased Conc. Piles, Epoxy Coated Shells, Note Added For Surface Seal.

MARCH 1975
 SUMMARIZED SLO - E.K.D. ZLN
 TRACED SLO - C.K.D. ZLN

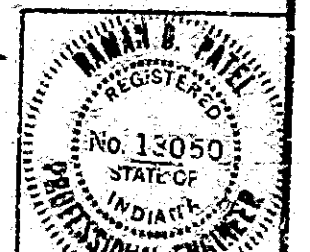
NOTES:
 Weight of Spirals includes weight of 1/2 extra turns top and bottom.
 Spacers and 1 1/2 turns of laps included in cost of Spiral.
 *** The weight of structural steel is approximate only, and it shall be the Contractor's responsibility to determine the weight on which he bases his bid.
 For Test Bar Samples See Bridge Standard CI.

BRIDGE SUMMARY

INDIANA STATE HIGHWAY COMMISSION

DATE OCTOBER 2, 1980
 SUBMITTED FOR APPROVAL *Pamela Patel*

PROJECT: ST-132-5(A)
 CONTRACT NO: B-1344B
 BRIDGE FILE: 67-38-67A0



ESTIMATE OF QUANTITIES

STRUCTURE PAY ITEMS				
CODE NO.	DESCRIPTION	UNIT	STRUCTURE	TOTAL QUANTITY
51002	CONCRETE CLASS C IN SUPERSTRUCTURE	CYS.		1669
51001	CONCRETE CLASS A IN SUPERSTRUCTURE	CYS.		
51005	CONCRETE CLASS A IN SUBSTRUCTURE	CYS.		
51010	CONCRETE CLASS B ABOVE FOOTINGS	CYS.		
51015	CONCRETE CLASS B IN FOOTINGS	CYS.		
51874	SPECIAL CLASS A CONCRETE	SFT.		
51095	CONCRETE STRUCTURAL MEMBERS	LSUM		
51096	REINFORCING STEEL	LBS.		23984
51092	EPOXY COATED REINFORCING STEEL	LBS.		17253
51095	STRUCTURAL STEEL	LBS.		
51098	STRUCTURAL STEEL	LSUM		
5-090	BRONZE PLATES	LBS.		
5107C	ANCHOR PLATES (MK-AP 1)	EACH		
5107B	ANCHOR PLATES (MK-AP 2)	EACH		
5108D	ANCHOR PLATES (MK-AP 3)	EACH		
51085	ANCHOR PLATES (MK-AP 4)	EACH		
5111E	ANCHOR BOLTS	EACH		
5106B	TIE DOWN ASSEMBLY MK-UA	EACH		
51095	CAST IRON DRAIN PIPE, 4 INCH	LBS.		
51100	CAST IRON DRAIN PIPE, 6 INCH	LBS.		
51105	CAST IRON DRAIN PIPE, 8 INCH	LBS.		
51110	CAST IRON GRAPES, BASINS AND FITTINGS	LBS.		
51134	REMOVAL OF PRESENT RAILING	LFT.		
51132	RAILING RESET	LFT.		
51115	RAILING (TYPE 3 OR C)	LFT.		
51120	RAILING (TYPE 5A OR C1)	LFT.		137
51125	RAILING (TYPE 6 OR D)	LFT.		
51130	RAILING (TYPE 7 OR E)	LFT.		
51090	CLASS C CONCRETE RAILING	CYS.		
51025	CLASS C CONCRETE RAILING	CYS.		
51131	BARRIER RAILING TYPE X	LFT.		
51215	CLASS X EXCAVATION	CYS.		
51220	WATERWAY EXCAVATION	CYS.		
51224	WATERWAY EXCAVATION	LSUM		
51225	DRY EXCAVATION	CYS.		
51230	FOUNDATION EXCAVATION (UNCLASSIFIED)	CYS.		18
51231	FOUNDATION EXCAVATION (UNCLASSIFIED)	LSUM		
51813	PNEUMATICALLY PLACED MORTAR	SFT.		
51870	REPOINTING MASONRY IN STR'S.	SFT.		
51814	WELDED STEEL WIRE FABRIC	SFT.		
51859	PAINTING OLD STEEL BRIDGE	LSUM		
51881	EXPANSION JOINT, TYPE B82	LFT.		
51885	EXPANSION JOINT, TYPE B86	LFT.		
51887	EXPANSION JOINT, TYPE B89	LFT.		
51888	EXPANSION JOINT, TYPE B89	LFT.		
51890	EXPANSION JOINT, TYPE B81	LFT.		
5192E	EXPANSION JOINT, CLASS S-S	LFT.		
5192E	EXPANSION JOINT, CLASS T-S	LFT.		

SUMMARIZED ALO C'K'D TJN
 TRACED _____ C'K'D _____

STRUCTURE PAY ITEMS				
CODE NO.	DESCRIPTION	UNIT	STRUCTURE	TOTAL QUANTITY
51135	TIMBER PILES FURNISHED, UNTREATED	LFT.		
51140	TIMBER PILES DRIVEN, UNTREATED	LFT.		
51145	TIMBER PILES FURNISHED, TREATED	LFT.		
51150	TIMBER PILES DRIVEN, TREATED	LFT.		
51155	PILE SHELLS FURNISHED AND DRIVEN (12 INCH)	LFT.		740
51160	PILE SHELLS FURNISHED AND DRIVEN (14 INCH)	LFT.		
51185	STEEL H PILES FURNISHED AND DRIVEN (8 BP 30)	LFT.		
51190	STEEL H PILES FURNISHED AND DRIVEN (10 BP 42)	LFT.		
51195	STEEL H PILES FURNISHED AND DRIVEN (12 BP 53)	LFT.		
51210	PILE ENCASMENT (CONCRETE)	LFT.		
	<i>Epoxy Coated Pile Shells Furnished & Installed (16 in)</i>	LFT.		240
51328	REMOVAL OF PRESENT STRUCTURE (PORTIONS)	LSUM		
51330	REMOVAL OF PRESENT STRUCTURE	LSUM		
51335	TEMPORARY BRIDGE AND APPROACHES	LSUM		
51866	CONCRETE SLOPEWALL 5 INCH	SYS.		
51865	SLOPEWALL	SYS.		
51370	RIPRAP	SYS.		
51375	REINMENT RIPRAP	TON		816
51371	HANDLAD RIPRAP 12 INCH	SYS.		
51372	CUMBED RIPRAP	TON		
51374	PLASTIC FILTER CLOTH	SYS.		1085
51106	DECK BRAINS	EACH		
51395	STEEL DRAIN PIPE (6 INCH)	LSUM		
51400	STEEL DRAIN PIPE (8 INCH)	LSUM		
51092	STEEL PIPE CONDUIT (2 INCH)	LFT.		
51856	RIVETS REMOVED	EACH		
51864	FIELD DRILLED HOLES	EACH		
51867	STRUCTURAL STEEL CUTTING	SIN		
51965	FIELD DRILLED HOLES IN CONCRETE	EACH		
51826	SURFACE SEAL	SFT.		
51827	BRIDGE DECK MEMBRANE	LSUM		
51842	BRIDGE DECK OVERLAY	SYS.		
51845	BRIDGE DECK SURFACE	SYS.		
51883	BRIDGE DECK PATCHING	SFT.		
51833	CONCRETE SCARIFYING	SYS.		
51840	ADDITIONAL CONCRETE SCARIFYING	SYS.		
51837	BLASTING AND CLEANING	SYS.		
51838	FINISHING AND CURING	SYS.		
	<i>Surface Seal</i>	L-SUM		1

APPROACH PAY ITEMS				
CODE NO.	DESCRIPTION	UNIT	STRUCTURE	TOTAL QUANTITY
02020	UNCLASSIFIED EXCAVATION	CYS.		
52240	COMMON EXCAVATION	CYS.		1995
52245	BORROW	CYS.		1101
52250	B BORROW	CYS.		
52255	B BORROW FOR STRUCTURE BACKFILL	CYS.		12.1
52303	REMOVAL OF PAVEMENT	SYS.		968
02235	ERRANGING PAVEMENT	SYS.		
04095	TYPE O COMPACTED AGGREGATE FOR SHOULDER (SIZE N°73)	TON		112
52490	TERMINAL JOINT	LFT.		
52495	CONTRACTION JOINT, TYPE D-1	LFT.		
5228	CONCRETE PAVEMENT REINFORCED (7 INCH)	SYS.		
52285	CONCRETE PAVEMENT REINFORCED (8 INCH)	SYS.		
52290	CONCRETE PAVEMENT REINFORCED (9 INCH)	SYS.		
52300	CONCRETE PAVEMENT REINFORCED (10 INCH)	SYS.		301
06070	CONCRETE SIDEWALK	SYS.		
52305	TYPE P COMPACTED AGGREGATE FOR BASE (SIZE NO. 53)	TON		
52300	COVER AGGREGATE	TON		
52305	COVER AGGREGATE (SIZE NO. 12)	TON		
52310	AGGREGATE FOR SHOULDER DRAINS	CYS.		
52310	AGGREGATE FOR UNDER DRAINS	CYS.		
52308	TYPE O COMPACTED AGGREGATE FOR BASE (SIZE NO. 53)	TON		
52310	SUBBASE	CYS.		58
52315	BITUMINOUS STABILIZED SUBBASE TYPE I, II, OR III	TON		
52320	BITUMINOUS STABILIZED SUBBASE	TON		
52345	BITUMINOUS BASE	TON		939
04260	BITUMINOUS BASE (SIZE NO 50)	TON		236
52454	BITUMINOUS BLENDER	TON		229
52450	BITUMINOUS SURFACE	TON		147
52456	BITUMINOUS MATERIAL FOR TACK COAT	SYS.		5835
52461	BITUMINOUS MATERIAL FOR PRIME COAT	SYS.		
04385	SEAL COAT TYPE 2	SYS.		907
52470	BITUMINOUS MIXTURE FOR APPROACHES	TON		
52475	BITUMINOUS MIXTURE FOR SHOULDER	TON		
52480	BITUMINOUS MATERIAL, APPLIED	TON		
52500	GUARD RAIL, TYPE A	LFT.		
52505	GUARD RAIL, TYPE B	LFT.		
52510	GUARD RAIL, TYPE C	LFT.		
52515	GUARD RAIL, TYPE D	LFT.		
52520	GUARD RAIL, TYPE E	LFT.		
52525	GUARD RAIL, TYPE F	LFT.		
52530	GUARD RAIL, TYPE G	LFT.		
52531	GUARD RAIL, TYPE H	LFT.		350
06035	RESET GUARD RAIL	LFT.		
52535	REMOVAL OF GUARD RAIL	LFT.		
52580	SODDING	SYS.		1636
	<i>MULCHED SEEDING "LEGUME"</i>	SYS.		320
52388	SEED MIXTURE "R"	LBS.		
52387	SEED MIXTURE "TR"	LBS.		
52400	MULCHING MATERIAL	TON		
52405	FERTILIZER	TON		
52410	WATER	M.G.		
52415	AGRICULTURAL LIMESTONE	TON		
52398	SEED MIXTURE "CV"	LBS.		
52401	MULCHING MATERIAL (WOOD CELLULOSE FIBER)	TON		
52630	MAINTAINING TRAFFIC	LSUM		
52370	CLEARING RIGHT-OF-WAY	LSUM		
52654	BREAKAWAY CABLE	SFT.		
	<i>TERMINAL TYPE "A"</i>	SFT.		

1. INCLUDES _____ TONS FOR SEED MIXTURE "R"
2. INCLUDES _____ TONS FOR SEED MIXTURE "TR"
3. INCLUDES _____ TONS FOR SEED MIXTURE "CV"

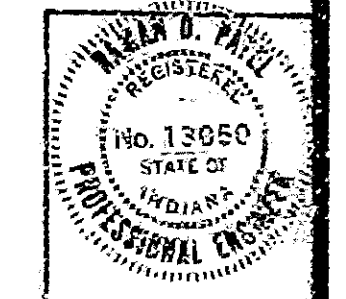
* Undistributed Quantity

REVISIONS	
DATE	ITEM
12-22-81	<i>Pile Shells Furnished & Driven Epoxy Coated Pile Shells Furnished & Installed, Surface Seal SFT to LSUM, water removed, Main-Feining Traffic Deleted.</i>
1-14-82	<i>51230 & Pipe: 0.052" C.S. added, Field Tile (undistributed) deleted, Quantity Rev. for Sodding & drain Tile 04095 description revised, Undistributed Quantity note added.</i>

BRIDGE ESTIMATE OF QUANTITIES INDIANA STATE HIGHWAY COMMISSION

DATE OCTOBER 2, 1980
 SUBMITTED FOR APPROVAL: Ramesh D. Patel

PROJECT: ST-132-5(A)
 CONTRACT NO: B-13448
 BRIDGE FILE: 67-38-6780



END STR