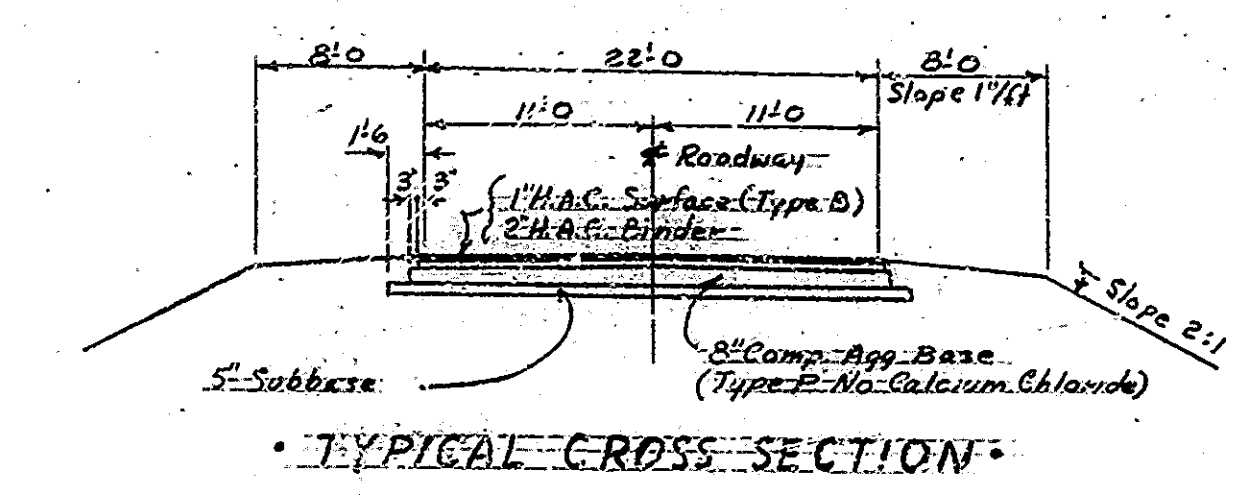
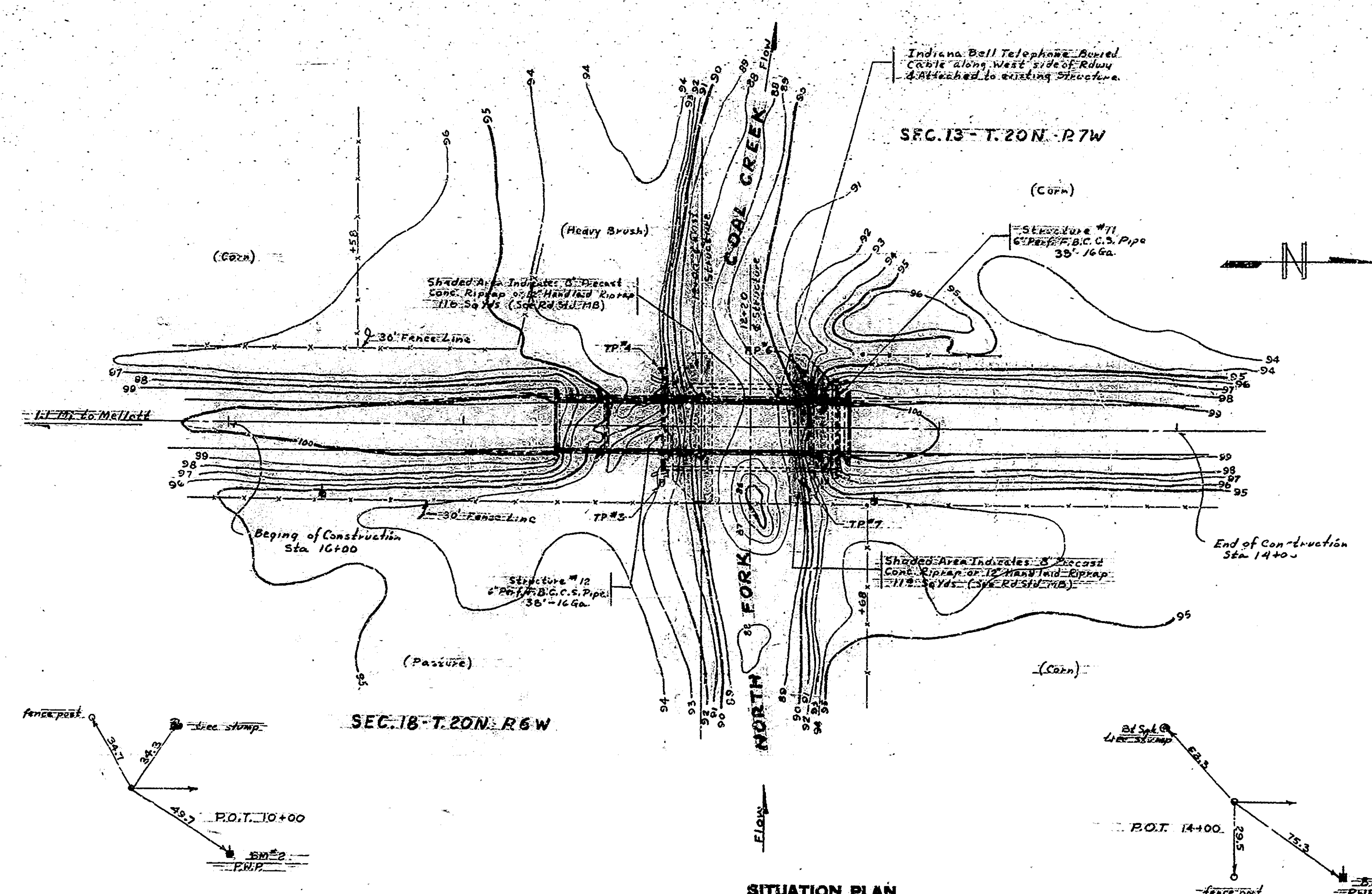


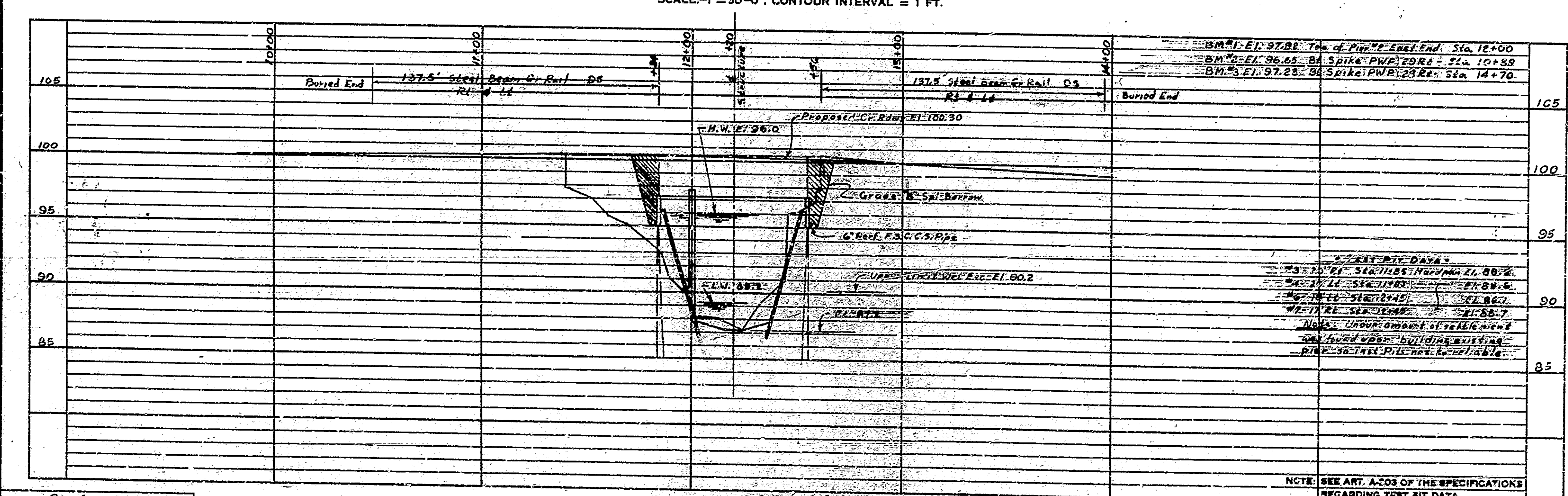
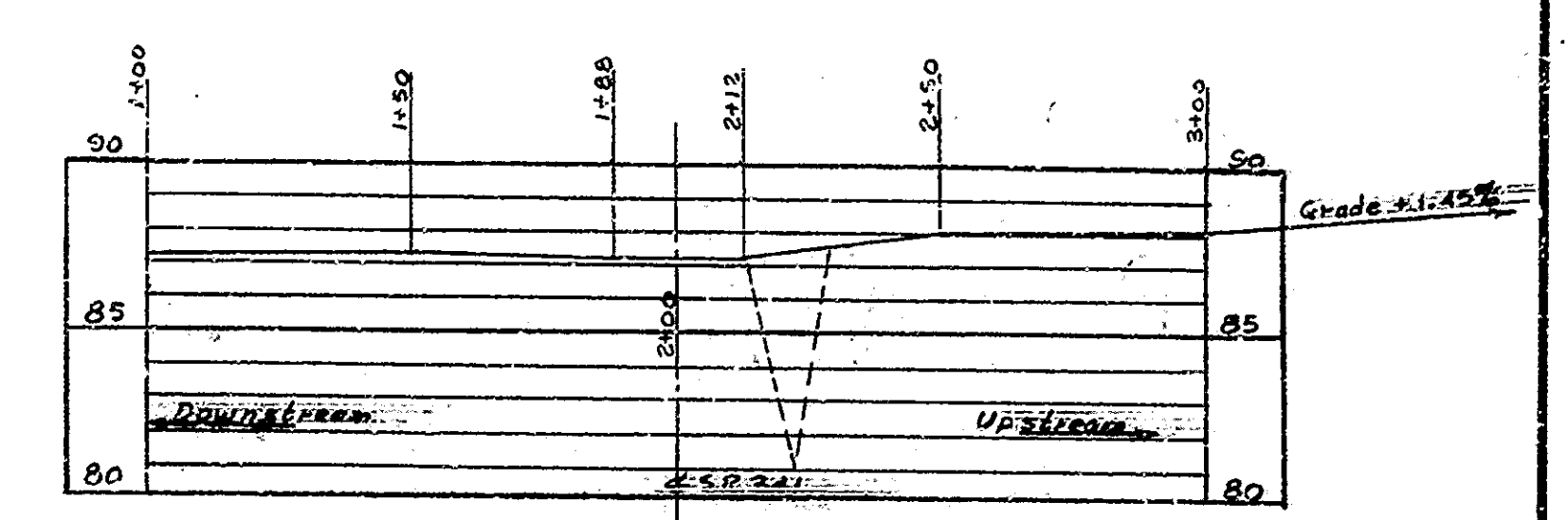
BRIDGES OVER 20' SPAN					
PL. ROAD RES. NO.	STATE	PROJECT NO.	FISCAL YEAR	SHEET NO.	TOTAL SHEETS
4	IND.				

Public Service Co. of Ind. Aff. Co. Ind. 69,000-Primary; 12,000-Secondary
Ind. Bell Telephone, Crawfordsville, Ind. Buried & Exposed



• PRESENT STRUCTURE •
2 Spans on 60' Steel Trusses built in 1946 under Cont. 2765.
Still remaining are portion of old stone abutments for County Bridge.

Drainage Area: 38 Sq. Mi. of rolling country (2.3 C.S.)



FILL + 20% 560 Cu Yds
COMMON EXCAVATION 70 Cu Yds
SPECIAL BORROW 490 Cu Yds
WATERWAY EXCAVATION

APPROVED
11-2-67

LAYOUT
PRESTRESSED CONCRETE BEAM BRIDGE
OVER SPAN: 72'0" ROW: 12'0" CURBS
OVER NORTH FORK COOL CREEK S.C. 341 D. 106 16.2
INDIANA STATE HIGHWAY COMMISSION
FOUNTAIN COUNTY
SCALE: AS NOTED 1967
RECOMMENDED FOR APPROVAL:

DRAWN: [Signature] CKD
DESIGNED: [Signature] CKD
TRACED: [Signature] CKD

PROFILE ON PROPOSED ROADWAY
SCALE: HORIZ. 1" = 30'-0" VERT. 1" = 5'-0"

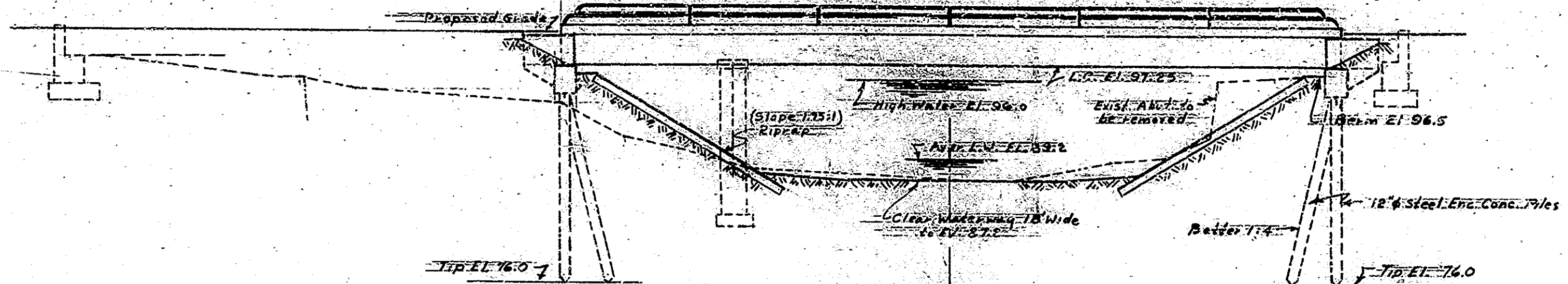
NOTE: FIELD NOTES, BOOK

DRAWING: C-1 OF 4
PROJECT: STATION: -
MAINT. BRIDGE CONTRACT NO. -
BRIDGE FILE: 5908

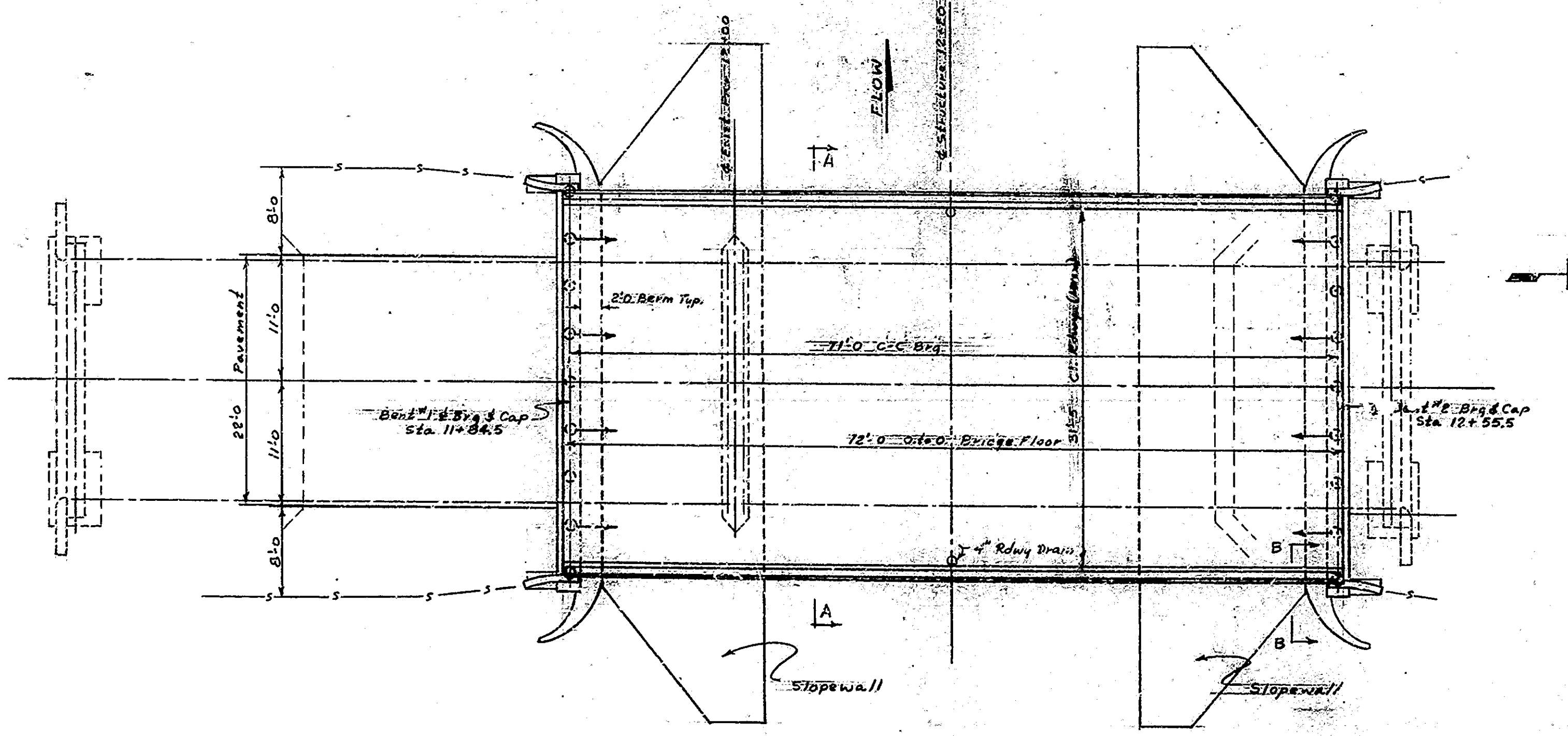
Series to Maintenance 11-3-67

BRIDGE OVER 20' SPAN				
PUB. ROAD DIST. NO.	STATE	PROJECT NO.	FISCAL YEAR	TOTAL SHEETS
4	IND.			

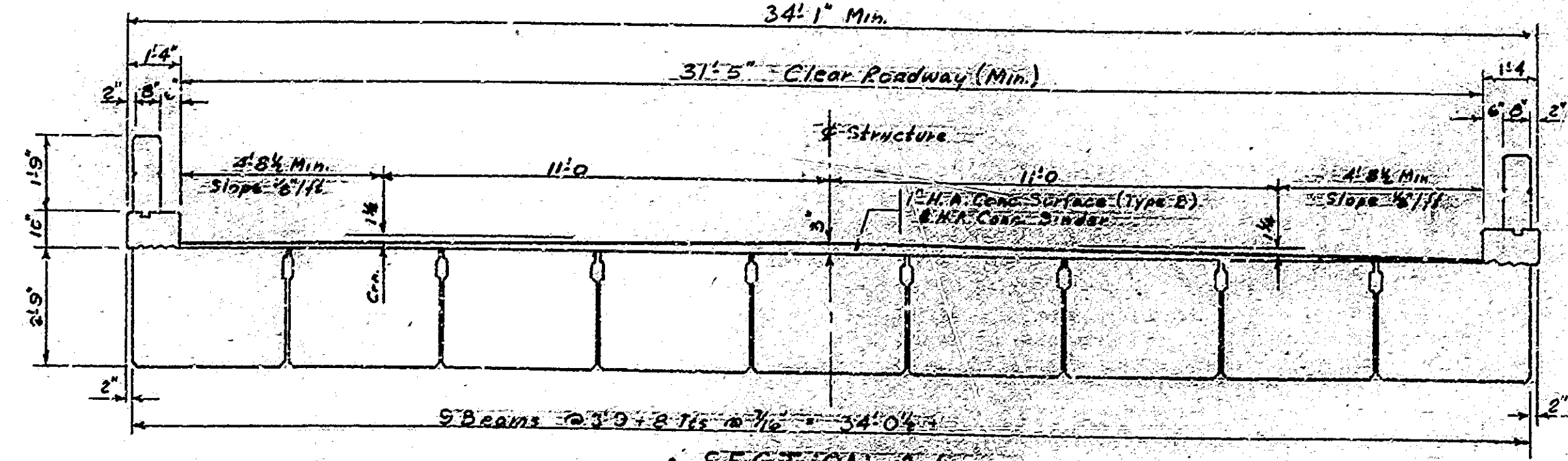
NOTE: STRUCTURE TO BE BUILT TO A 0.00% GRADE



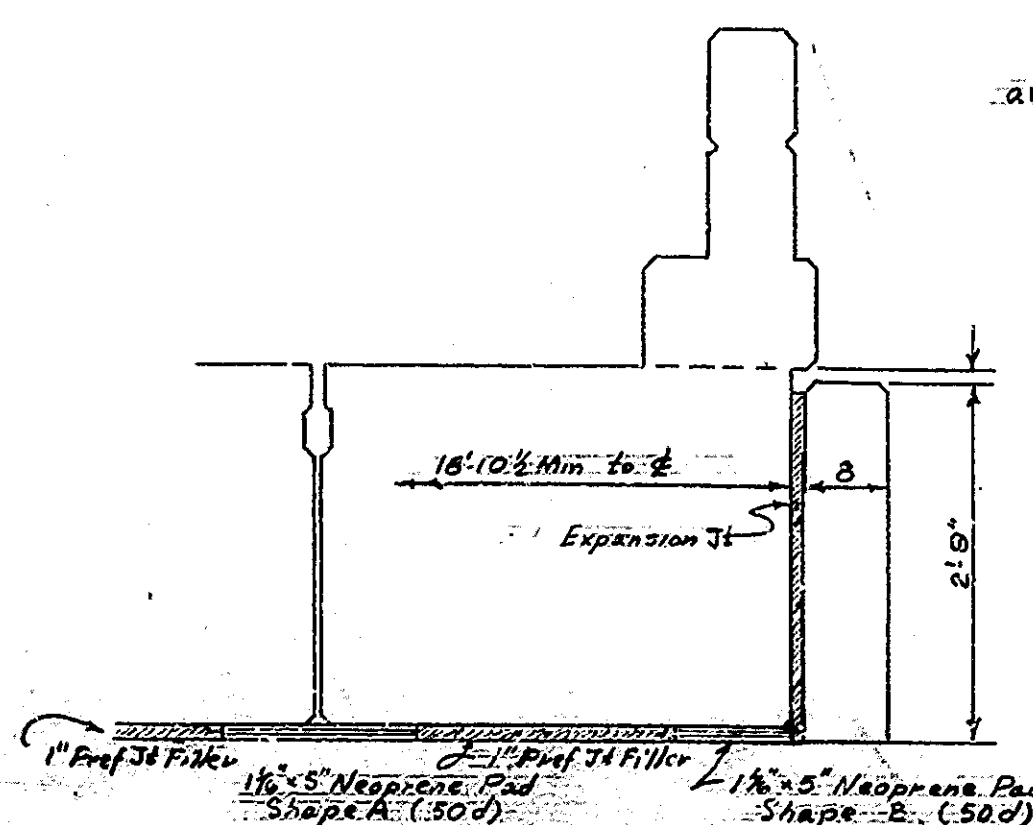
ELEVATION
Scale: 1/8" = 1'-0"



PLAN
Scale: 1/8" = 1'-0"



SECTION A-A
Scale: 1/8" = 1'-0"



SECTION B-B
Scale: 3/4" = 1'-0"

GENERAL NOTES

- Present structures to be removed.
- Piles shall have minimum bearing value as shown on detail drawings. Determine pile lengths by Art. 203 of the specifications.
- For details of steel encased concrete piles see Bridge Standard C-12 applicable articles in the specifications.
- Piles shall be driven to elevation shown on plans or below if necessary to obtain the desired bearing.
- Reinforcing steel covering shall be 1 1/2 inches in the concrete railings, 2 inches and 2 inches for pile caps and other parts unless noted on the details.
- Concrete in superstructure, railing and bench tops to be Class F. Concrete in piers, ditches, steel encased concrete piles, and roadways for structures to be Class D.
- Continuous concrete pours shall be required between construction joints as shown on detail plans.
- Level forms under copings and chamfer exposed edges. Finish unless noted otherwise.
- Construct 8" precast concrete riprap or 12" hand laid riprap slopes at locations shown on layout.
- Construct and maintain suitable fencing for live stock around any temporary right of way during construction in compliance with specifications.
- Tolerance in position of pile head maximum of 2 inches.
- All railings to be constructed perpendicular to grade.
- Two roadway drainage outlets to be placed as shown on details.
- See special provisions for items included in this contract.

DESIGN DATA

Designed for HS20-44 Loading in accordance with 1965 A.A.S.H.O. Specifications.

APPROVED
WAB 11-2-67

GENERAL PLAN
PRESTRESSED CONCRETE BEAM BRIDGE
ONE SPAN - 72'-0" 31'-5" ROADWAY CLEARANCE
OVER W. PARK COAL CREEK SR 341-D LOG 16.2
INDIANA STATE HIGHWAY COMMISSION
FOUNTAIN COUNTY

SCALE: AS NOTED 1967
RECOMMENDED FOR APPROVAL: _____
DRAWING: C-2 OF 4
PROJECT: MAINTENANCE CONTRACT NO. _____
BRIDGE FILE: 341-D-5908

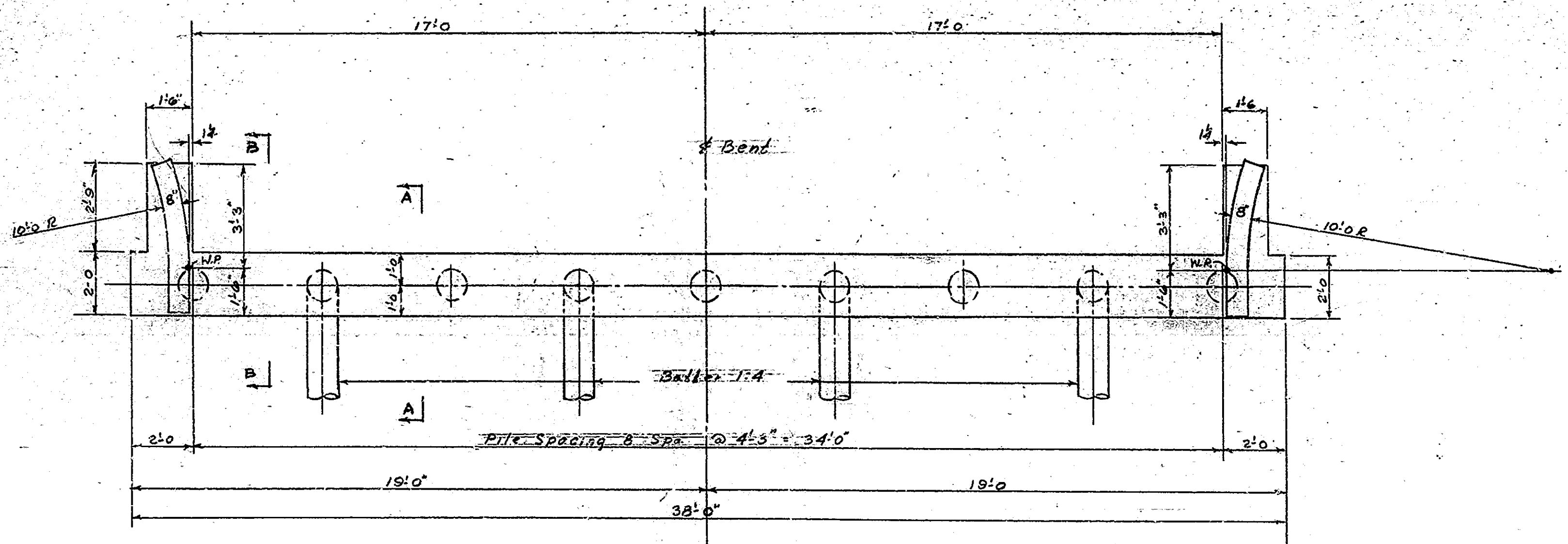
DESIGNED: PENA	CKD
DRAWN: C	CKD
TRACED: C	CKD

BRIDGES OVER 20' SPAN					
PUL. ROAD DIST. NO.	STATE	PROJECT NO.	FISCAL YEAR	SHEET NO.	TOTAL SHEETS
4	IND.				

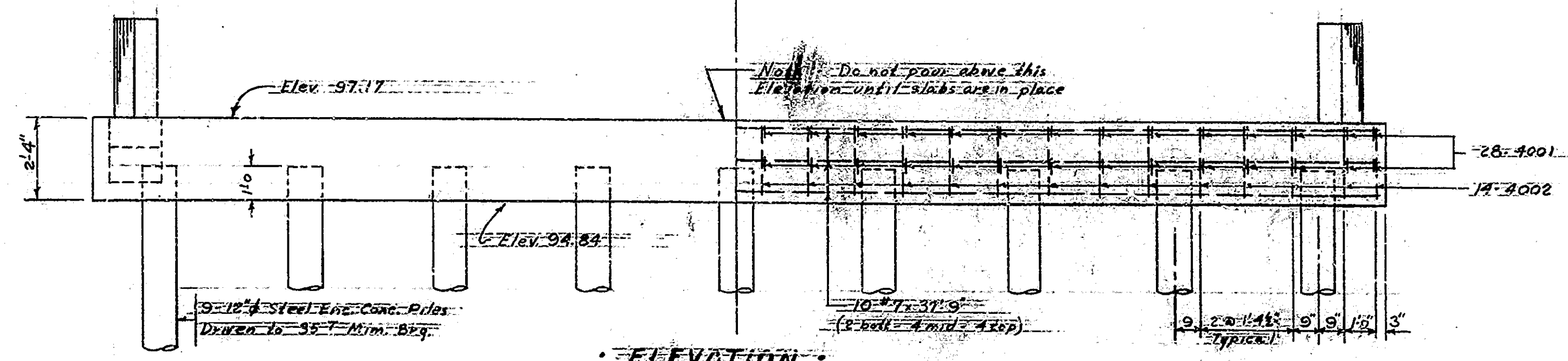
**BILL OF MATERIAL
ONE BENT**

REINFORCING STEEL			
SIZE & MARK	No. OF BARS	LENGTH	WEIGHT LBS.
#7	10	37.9	
Total	#7		772 ⁰⁰
#6	8	4.3	
Total	#6		51 ⁰⁰
#5	14	3.10	
Total	#5		56 ⁰⁰
4001	56	2.10	
4002	28	6.8	
#4	6	4.6	
#4	6	4.3	
#4	12	2.7	
Total	#4		286 ⁰⁰
Total Steel			1165 ⁰⁰
CONCRETE - CURB & F.			7.56 Cys
MISCELLANEOUS			
9" Dia. Top Steel Exp. Conc. Piles			
Total Length			180 Lin Ft

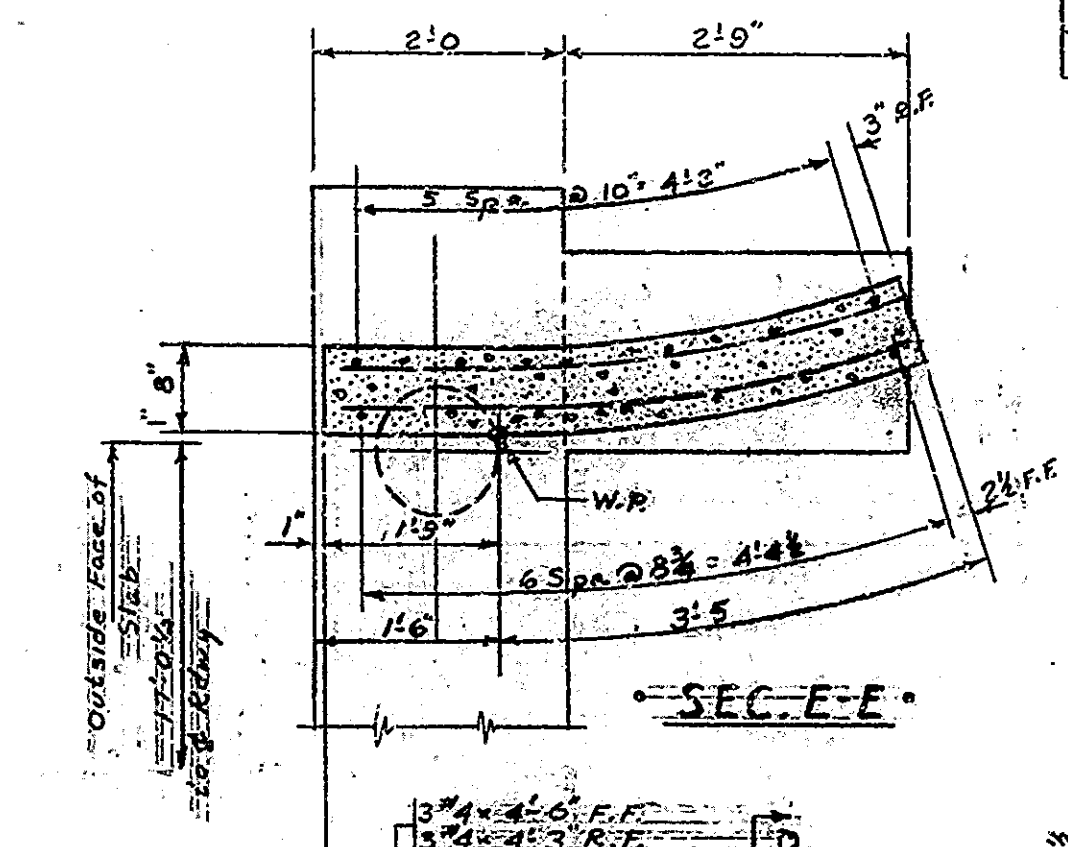
Note:
Gap not to be poured until the fill is complete to the bottom of cap elevation.



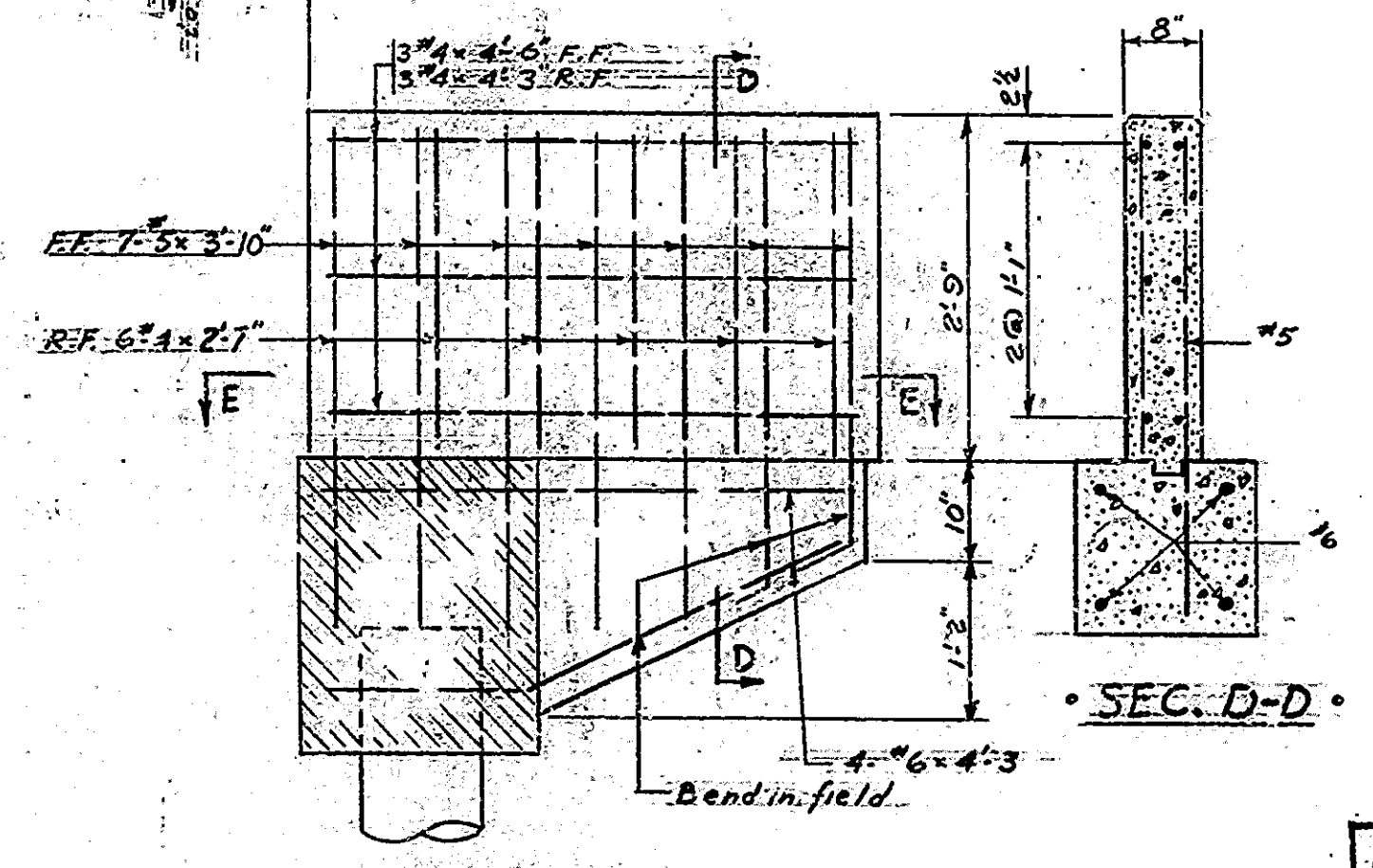
CAP PLAN
Scale = 3/4" = 1'-0"



ELEVATION
Scale = 3/8" = 1'-0"

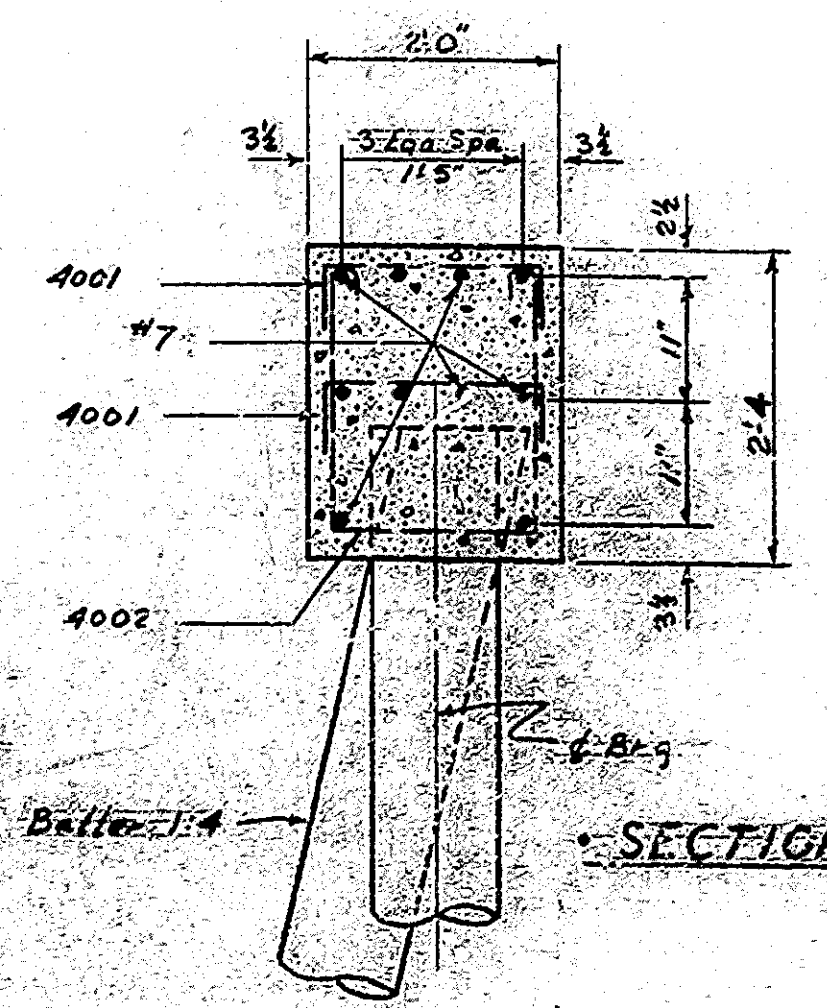


SECTION E-E

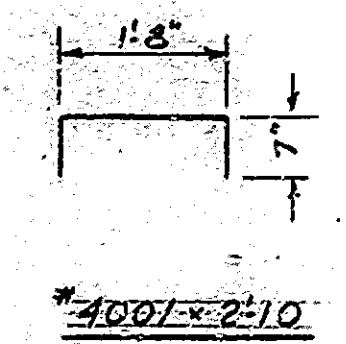


SECTION B-B

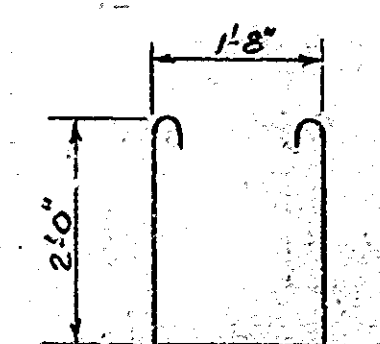
SECTION D-D



SECTION AA



#4001 - 2'-10"



#4002 - 6'-8"

APPROVED
WAP 11-2-67

**DETAILS BENT NO. 1 & NO. 2
INDIANA STATE HIGHWAY COMMISSION**

SCALE: 3/4" = 1'-0" Unless Noted 1967

RECOMMENDED FOR APPROVAL:

DRAWING: C-3 OF 4

PROJECT: N. Fork Coal Creek

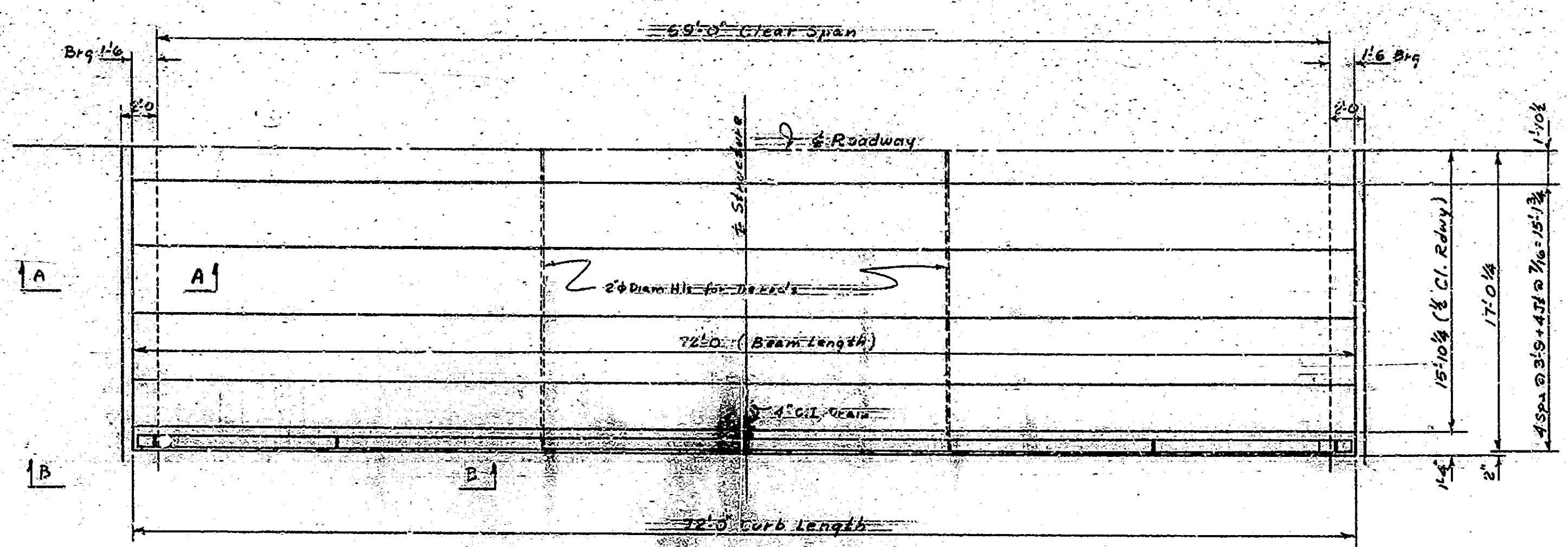
MAINTENANCE CONTRACT NO.

BRIDGE FILE: 347-D-5908

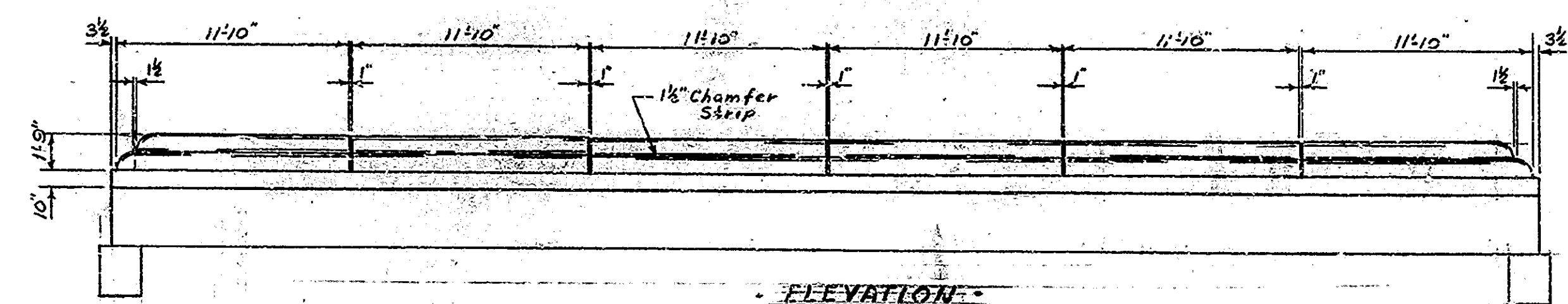
DESIGNED	Repe	CKD
DRAWN		CKD
TRACED		CKD

Note: See Br. Std. C₁ for Reinforcing Bar Notes

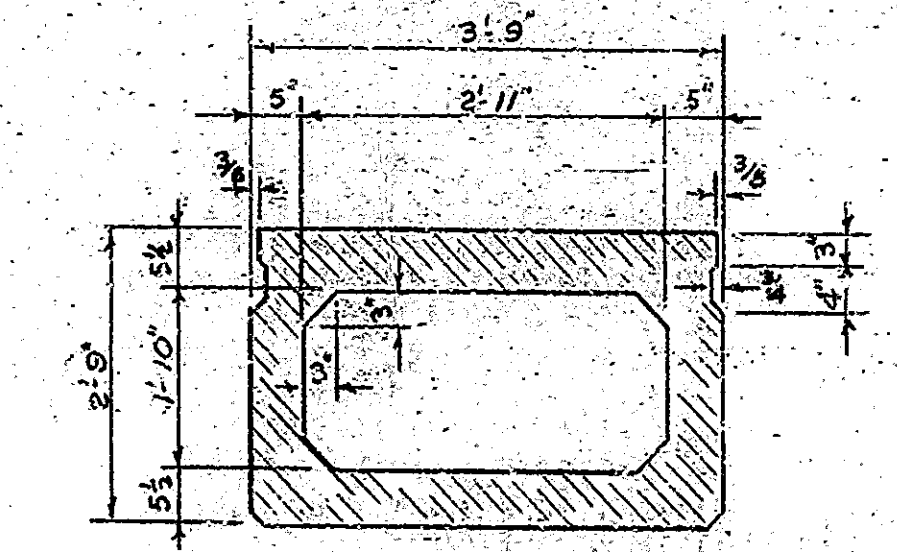
BRIDGES OVER 20' SPAN					
DIST. ROAD DIST. NO.	STATE	PROJECT NO.	TOTAL SHEETS	SHEET NO.	TOTAL SHEETS
4	IND.				



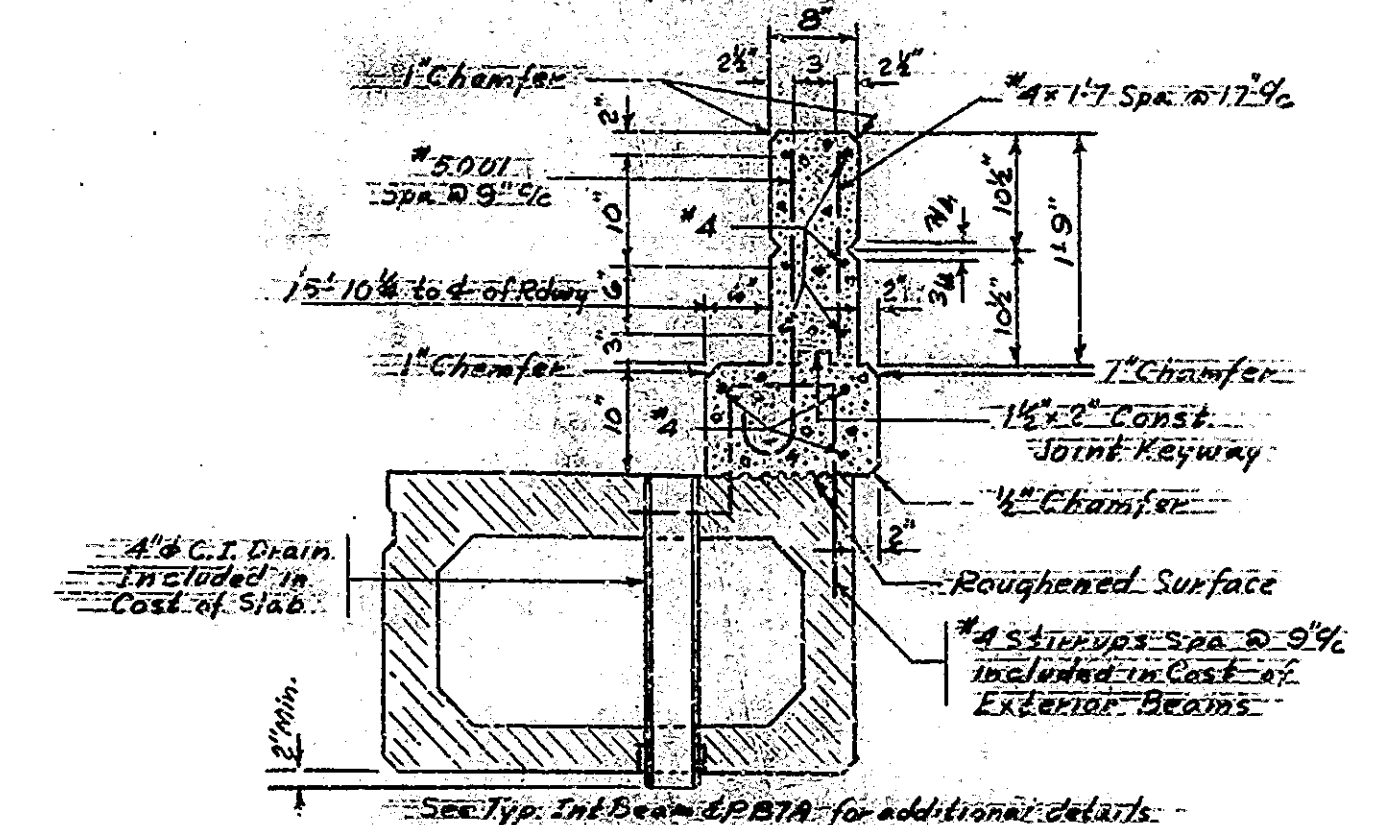
HALF PLAN
Scale: 3/8" = 1'-0"



ELEVATION
Scale: 3/8" = 1'-0"



TYPICAL INTERIOR PRESTRESSED BEAM SECTION
(Not to scale)

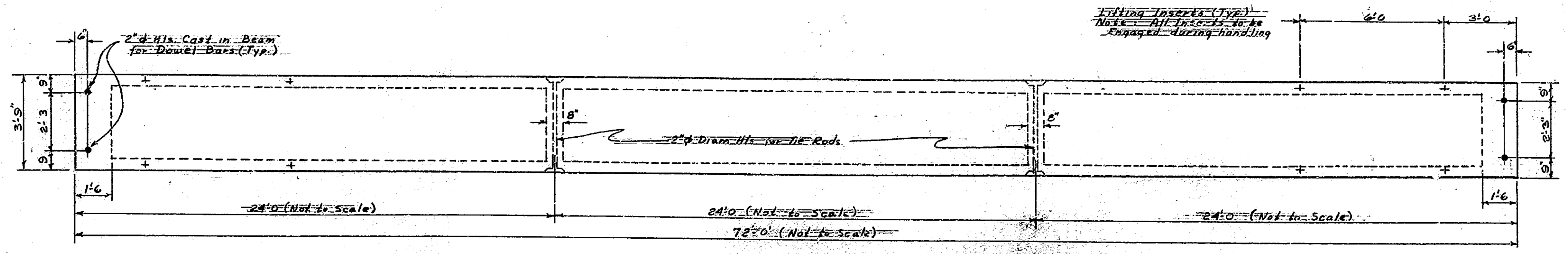


TYPICAL EXTERIOR PRESTRESSED BEAM SECTION
Scale: 3/8" = 1'-0"

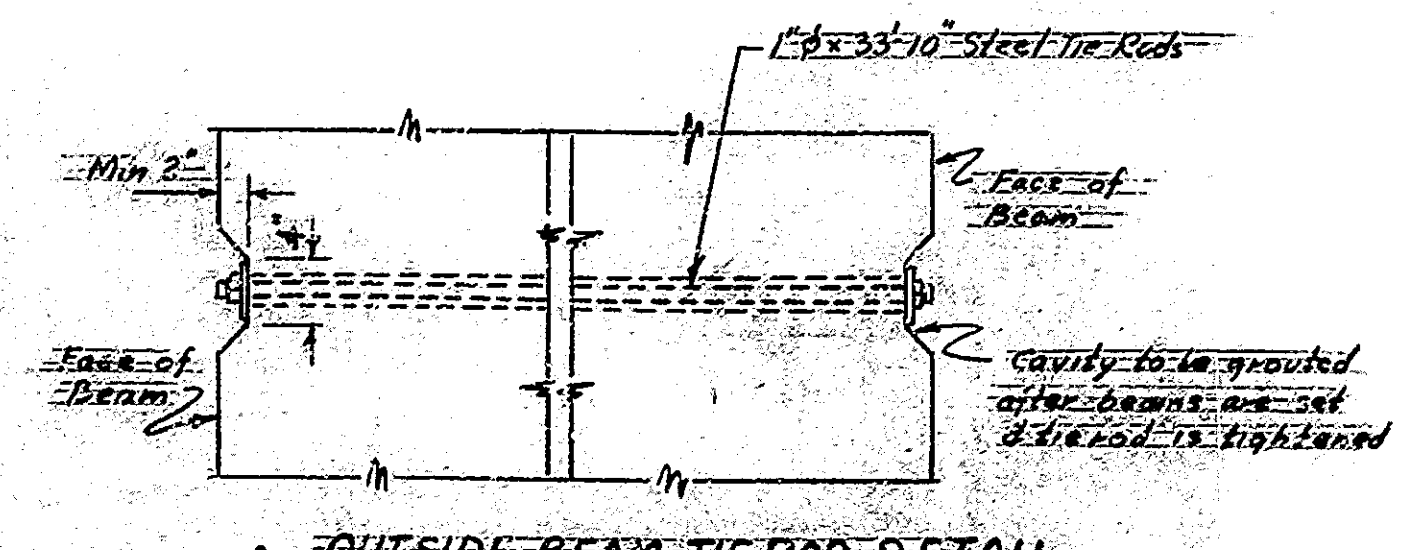
BILL OF MATERIAL FOR CURBS & RAILINGS

REINFORCING STEEL				
SIZE	NO.	LENGTH	WEIGHT	LAB.
#4	6	7'11.9"		
#4	48	11'7"		
#4	24	10'11"		
#4	108	1'7"		
Total #4			948#	
Total Steel			1,508#	

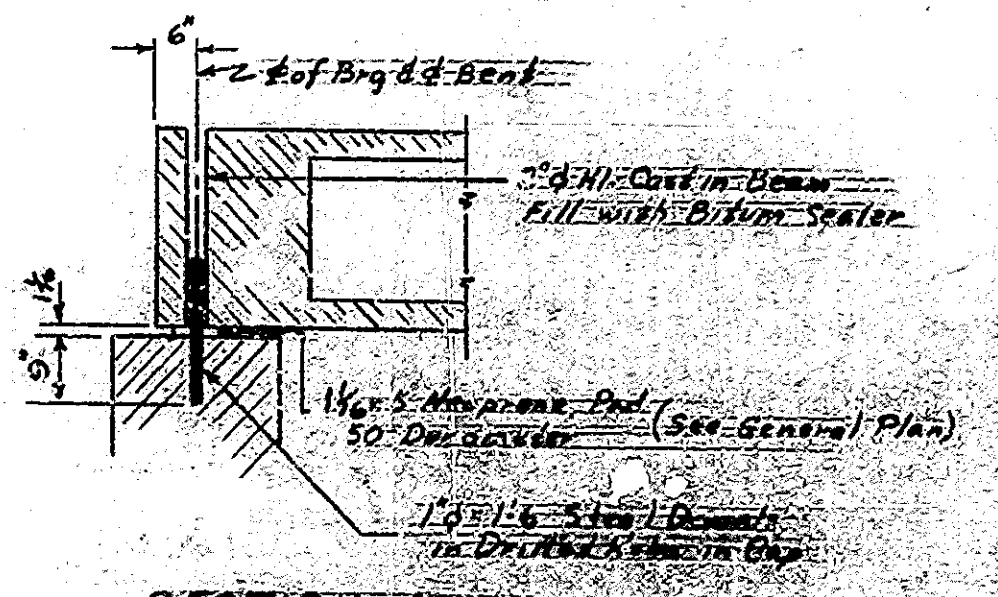
Class "F" Conc. Curb	5,920 yds
Class "F" Conc. Entire	6,980 yds
Total Class "F"	12,900 yds



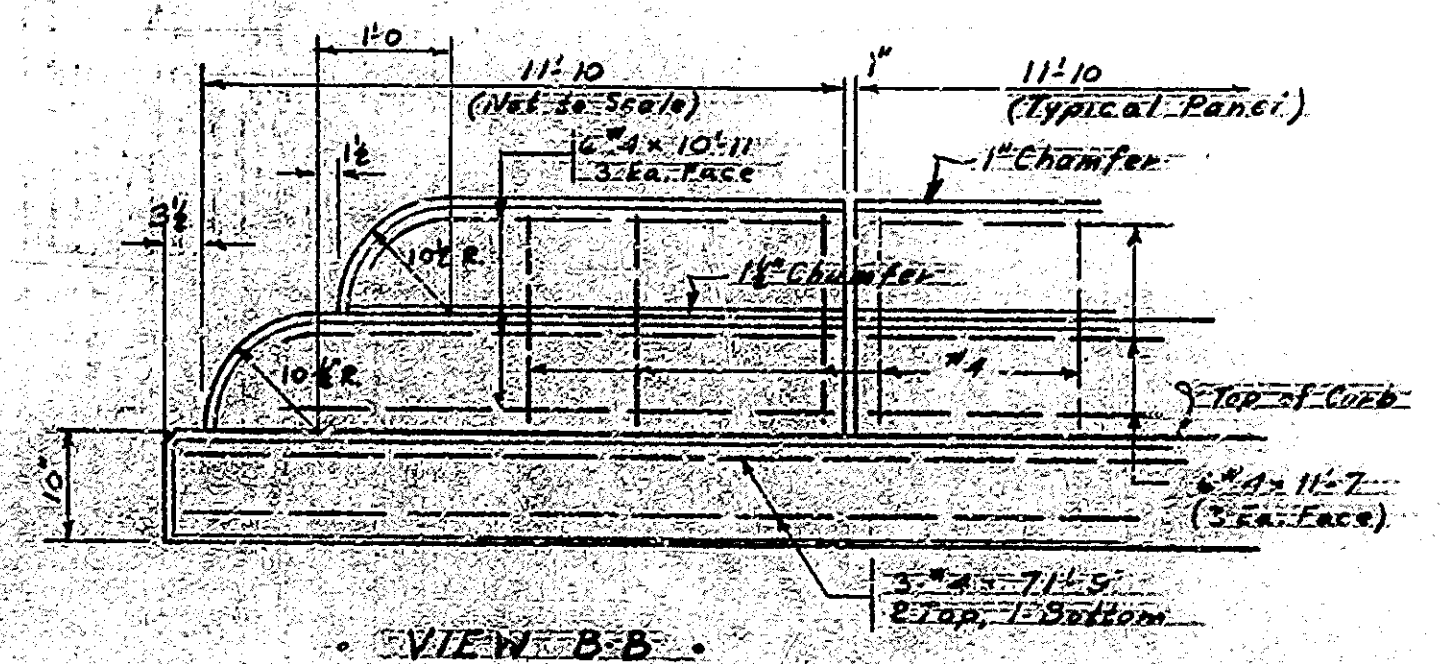
PLAN FOR PRESTRESSED BEAMS (INTERIOR)
Scale: 3/8" = 1'-0"



OUTSIDE BEAM TIE ROD DETAIL



SECTION A-A
Scale: 3/8" = 1'-0"



VIEW B-B
Scale: 3/8" = 1'-0"

DESIGN DATA

Prestressed Beams:
All Beams shall be B-33 x 3'-9" as shown on Bx. Std. PB7A.
See Bx. Std. PB6 for Design Data.
Reinforcing Concrete:
Unit stresses = f_s = 20,000 psi f_c = 12,000 psi

APPROVED
WBA 11-2-61

SUPERSTRUCTURE DETAILS
INDIANA STATE HIGHWAY COMMISSION

SCALE: As Shown
RECOMMENDED FOR APPROVAL: _____
1967

PROJECT: N. Fork Coal Creek
MAINT. BRIDGE CONTRACT NO. _____
BRIDGE FILE: 341-D-5908

DESIGNED: Reas CKD
DRAWN: CKD
TRACED: CKD

Note: See Bx. Std. C for Reinforcing Bars and Outside face of exterior beam to be grouted with Class "F" concrete.

END STR
541-C-5908