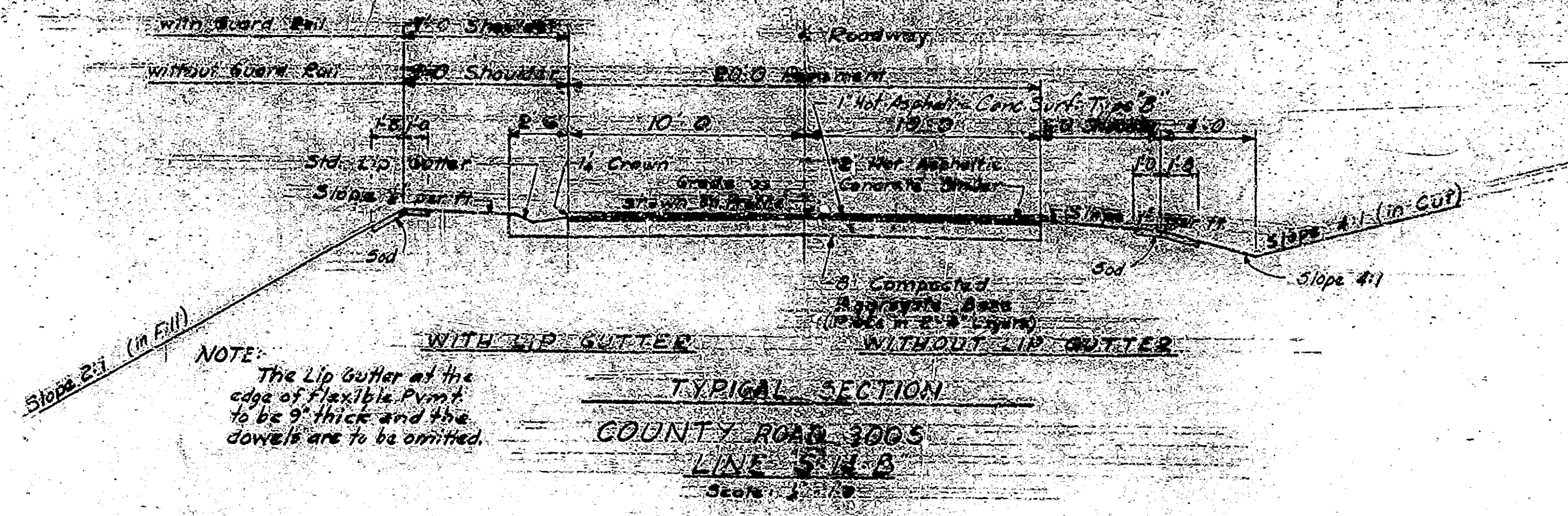


FEDERAL ROAD DIVISION NO.	STATE	PROJ. NO.	FISCAL YEAR	SHEET NO.	TOTAL SHEETS
4-	IND.	69-3 (1979)	1961	3	40



TYPICAL CROSS SECTION
DETAILS

12b

SEC. 16 T27N R10E
ROCK CREEK TWP
HUNTINGTON CO.

LYLE S. & EVA MARIE
WATSON

ORLA DE HAYDN

GEORGE R. & LAURA E.
TERRY

JAY M. & LUCILE C.
CLAMPITT

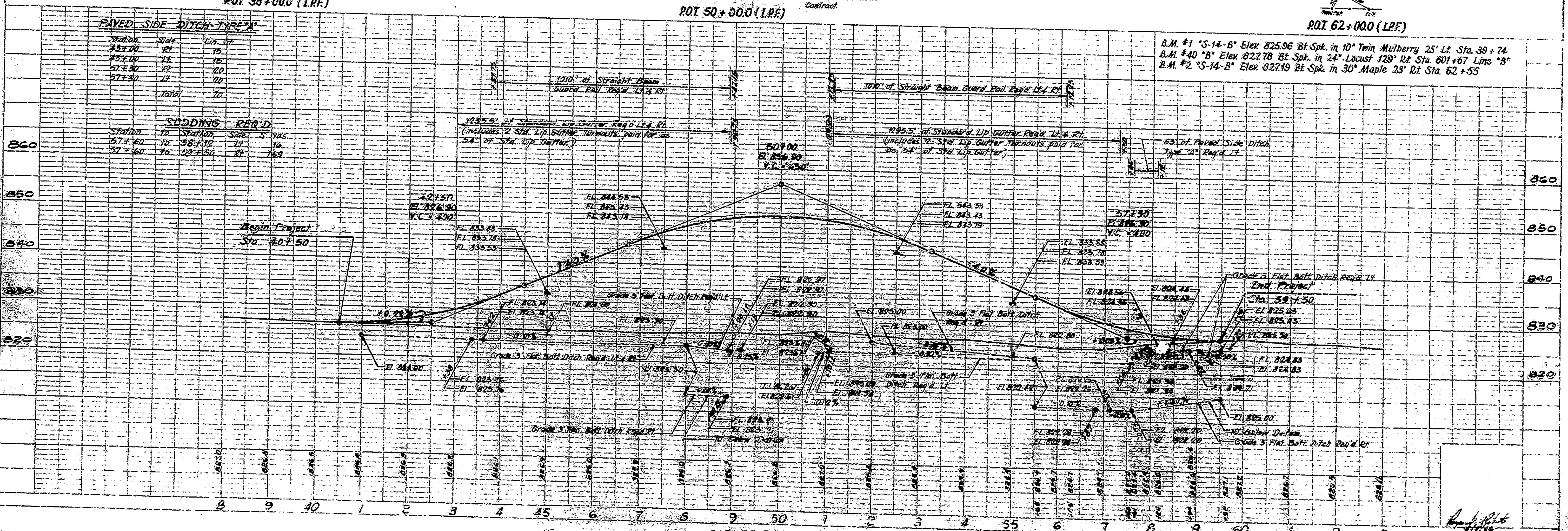
JAY M. & LUCILE C.
CLAMPITT

SEC. 22 T27N R10E

ADDITIONAL QUANTITIES FOR APPROACHES						
LOCATION STA.	CLASS OF TYPE	WIDTH	SURFACE LENGTH	RADIUS	COMPACTED AGG. BASE SR. YDS.	EARTH WORK CU. YDS.
45+50 RT.	F. Ent.	10'	60'		8'	0
57+00 RT.	F. Ent.	10'	60'		8'	99
58+04 LT.	Pr. Dr.	12'	25'	15'/25'		110
58+94 LT.	Pr. Dr.	12'	15'	15'/25'		51
59+58 LT.	Pr. Dr.	12'	13'	15'/25'		37
						0

PAVED SIDE DITCH TYPE "A"		
Station	Side	Length
45+50	RT.	15
45+50	LT.	15
57+30	RT.	20
57+30	LT.	20
Total		
70		

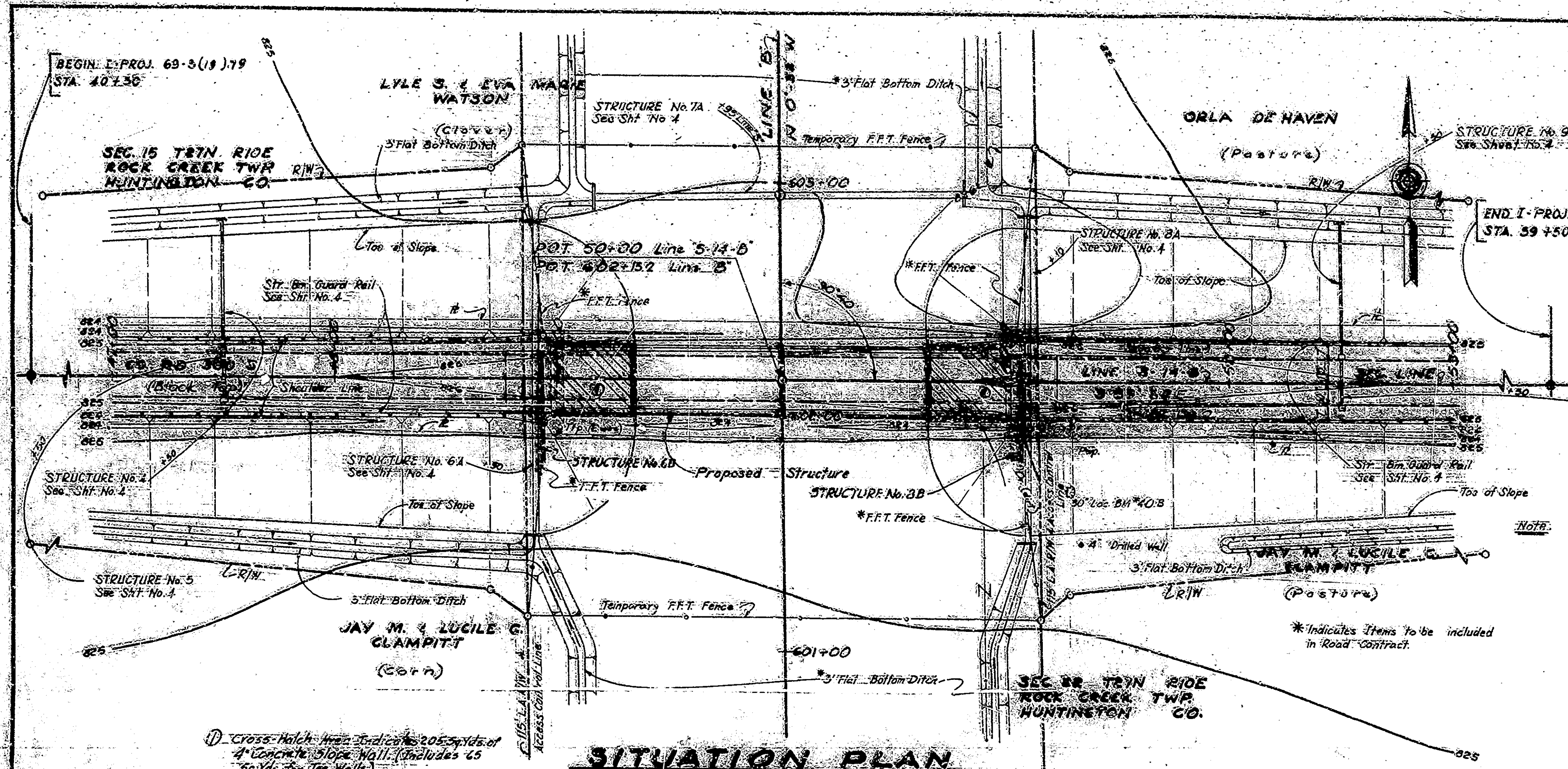
SADDLING REQ'D		
Station	Side	S. YDS.
57+30	LT.	16
57+30	RT.	16



B.M. #1 "S-14-B" Elev 825.96 Bt. Spk. in 10' Twin Mulberry 25' Lt. Sta. 39+74.
B.M. #2 "B" Elev 827.78 Bt. Spk. in 26' Locust 129' Rt. Sta. 60+67 Line "B"
B.M. #3 "S-14-B" Elev 827.19 Bt. Spk. in 30' Maple 23' Rt. Sta. 62+55

PLAN
Scale: 1" = 40'
Date: 5/2/61
Drawn by: [Name]
Checked by: [Name]

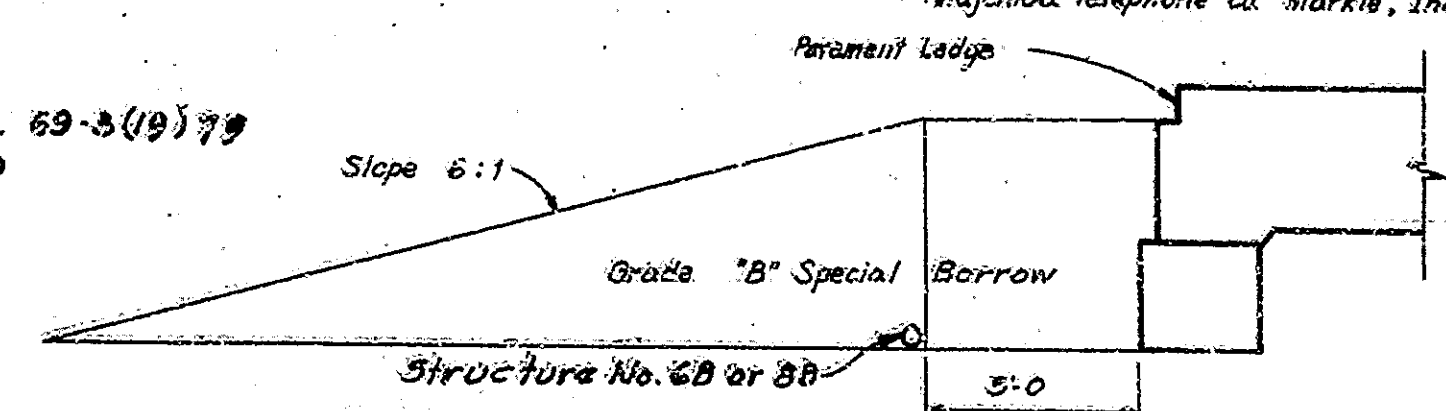
PROFILES
Scale: 1" = 10'
Date: 5/2/61
Drawn by: [Name]
Checked by: [Name]



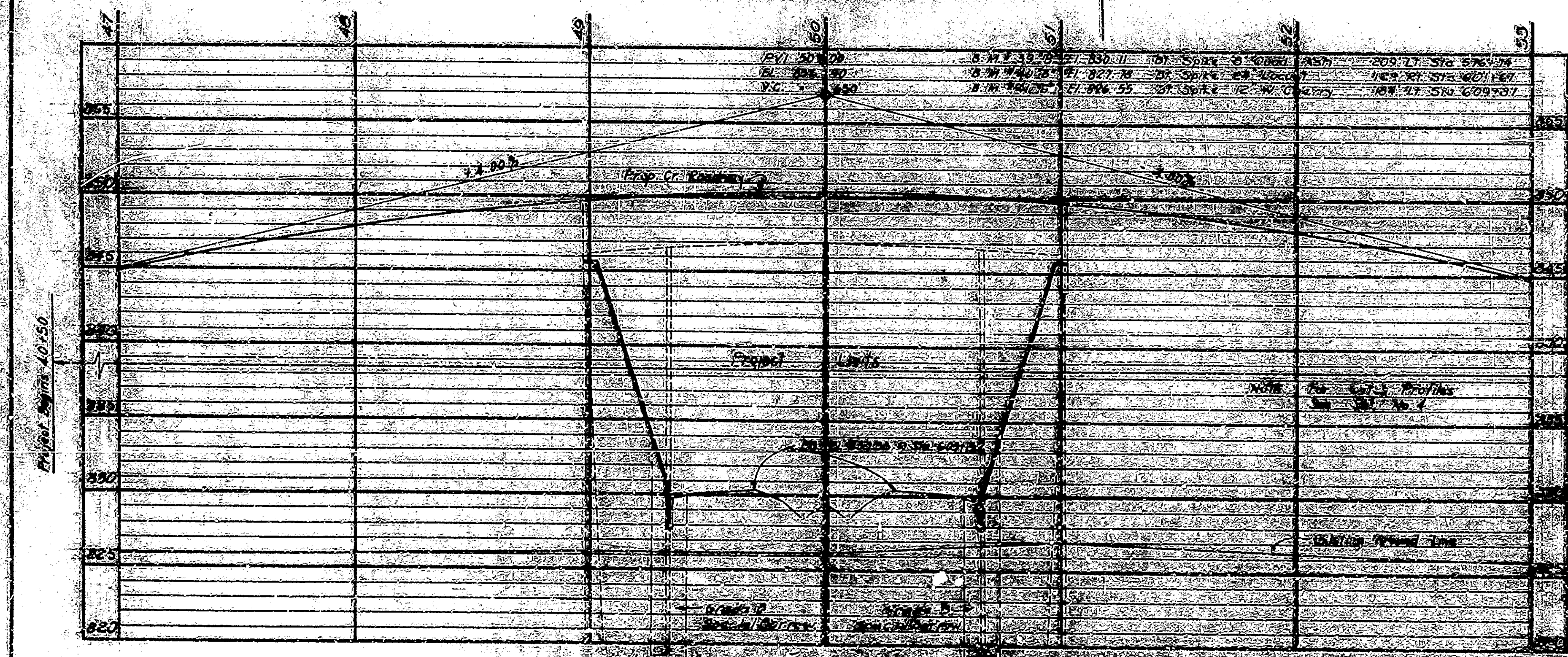
REFERENCES
See Road Plan & Profile Sheet for References (Sht. 16.3)

BRIDGES OVER 20' SPAN					
PUB. ROAD DIST. NO.	STATE	PROJECT NO.	FISCAL YEAR	SHEET NO.	TOTAL SHEETS
4	IND.	69-3(19)79	1961	7	10

PUBLIC UTILITY OWNERS
Huntington Co. Rural Electric Membership Corp.,
Huntington, Indiana
Wajenica Telephone Co. Markle, Indiana



NOTE: For Drainage & R/W Details Not Shown See Plan & Profile Sheet for Line "S-14-B" (Sht. No. 4)



Fill @ 20%	62385 Cu Yds
Common Excavation	935 Cu Yds
Surplus Foundation Excavation	75 Cu Yds
Special Borrow	61375 Cu Yds

LAYOUT
REINFORCED CONCRETE GIRDER & CONTINUOUS STEEL BEAM
BRIDGE 4 SPANS AT 35'-0", 65'-0", 65'-0", 35'-0" OVER
INTERSTATE 69. 2' AT 1'-6" WALKS, 2'-0" ROADWAY ON
COUNTY ROAD 300S 0'-00" SKEW.

STATE HIGHWAY DEPARTMENT OF INDIANA
HUNTINGTON COUNTY

SCALE: AS NOTED
SUBMITTED FOR APPROVAL *Raymond Roberts* MAY 8, 1962

DRAWING: 51 OF 10
PROJECT: I-69-3(19)79 STA. 50+00
BRIDGE CONTRACT NO. 6205
BRIDGE FILE: I-69-84-4779

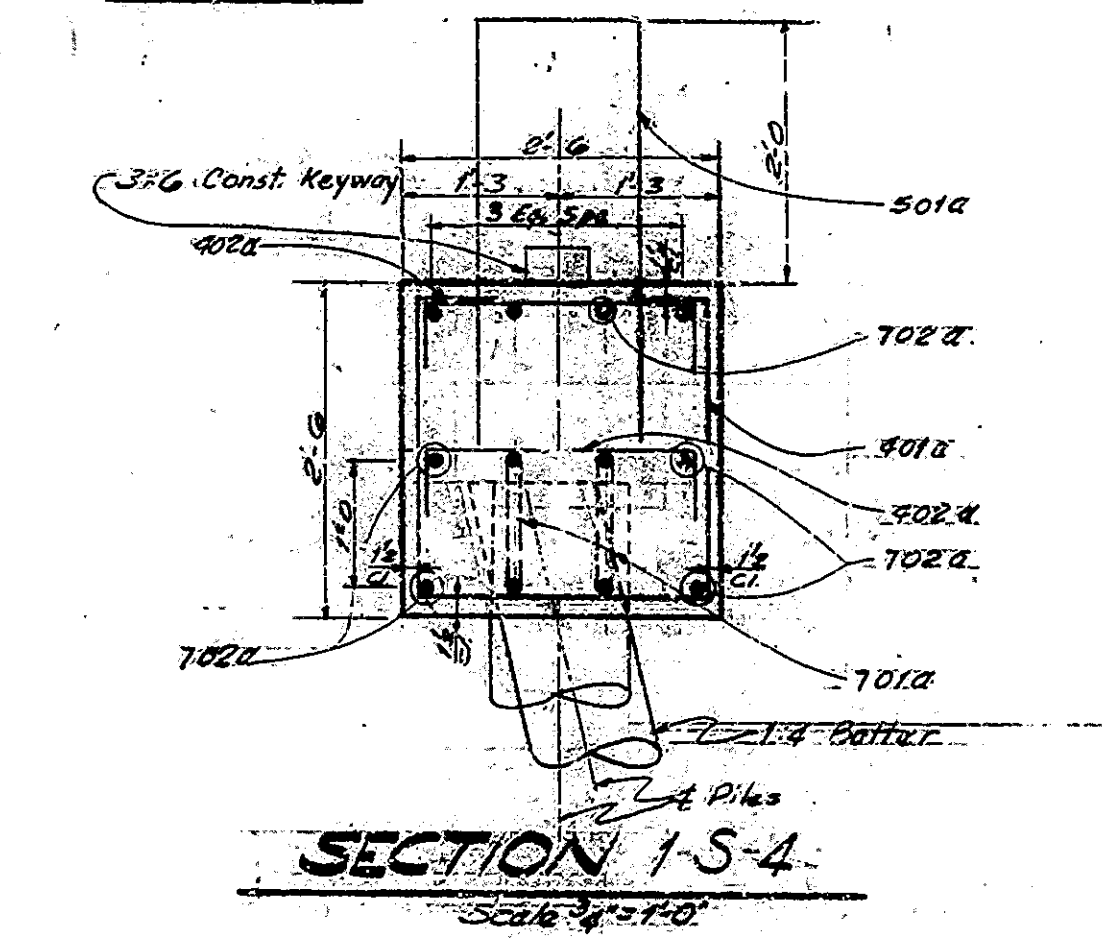
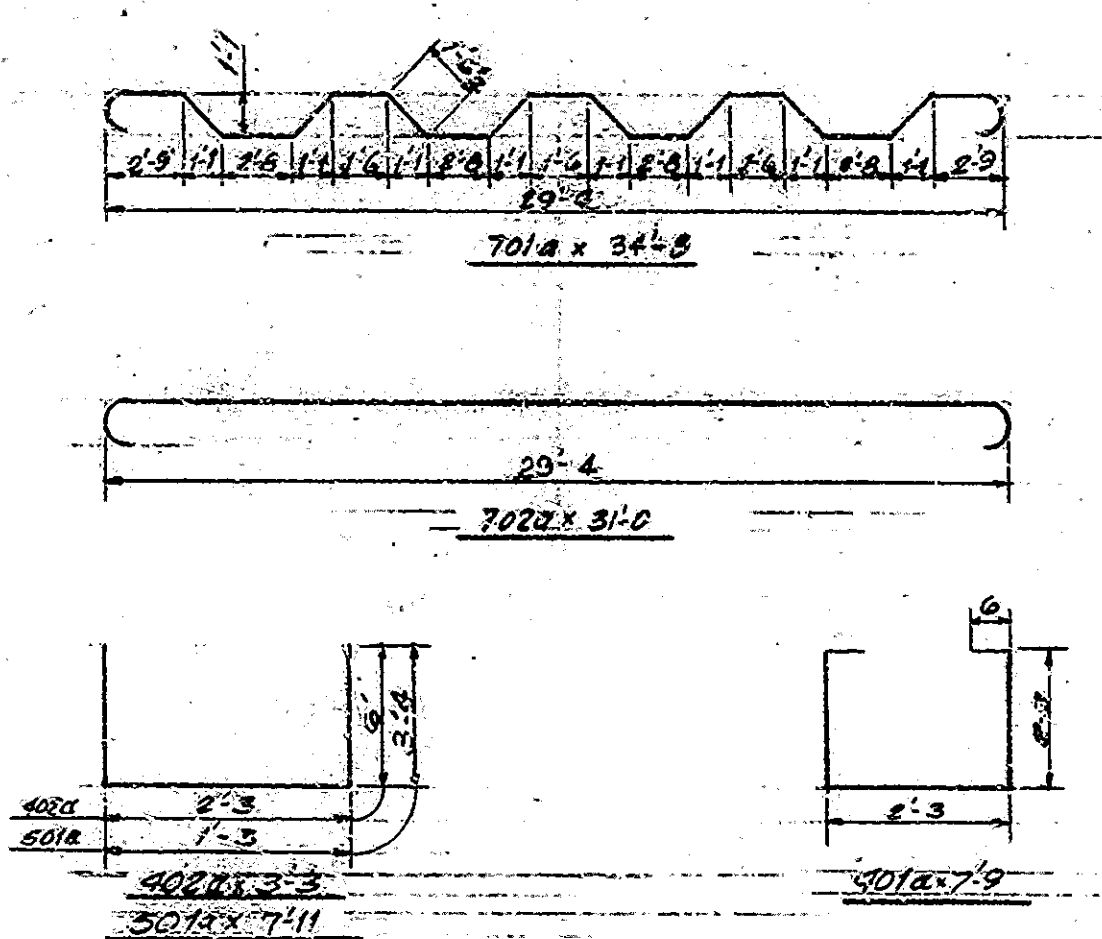
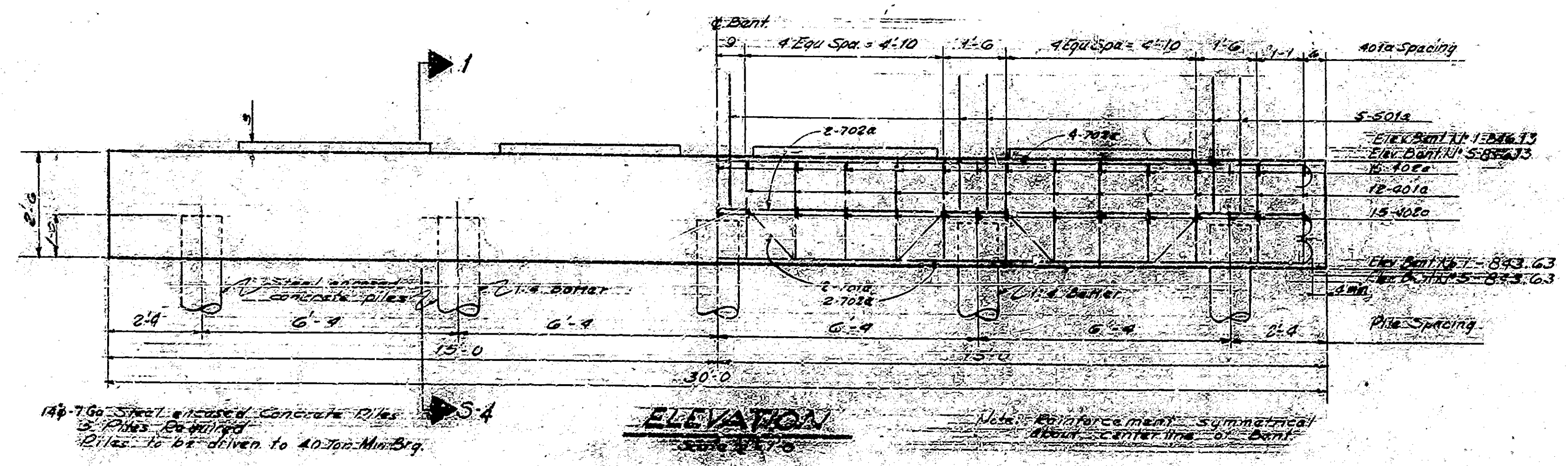
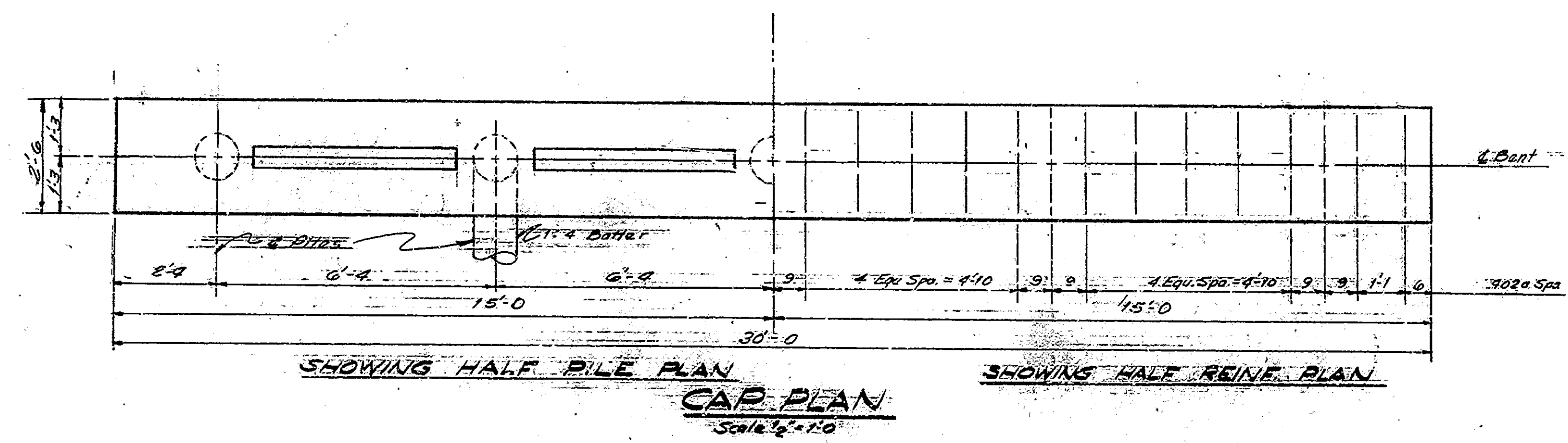
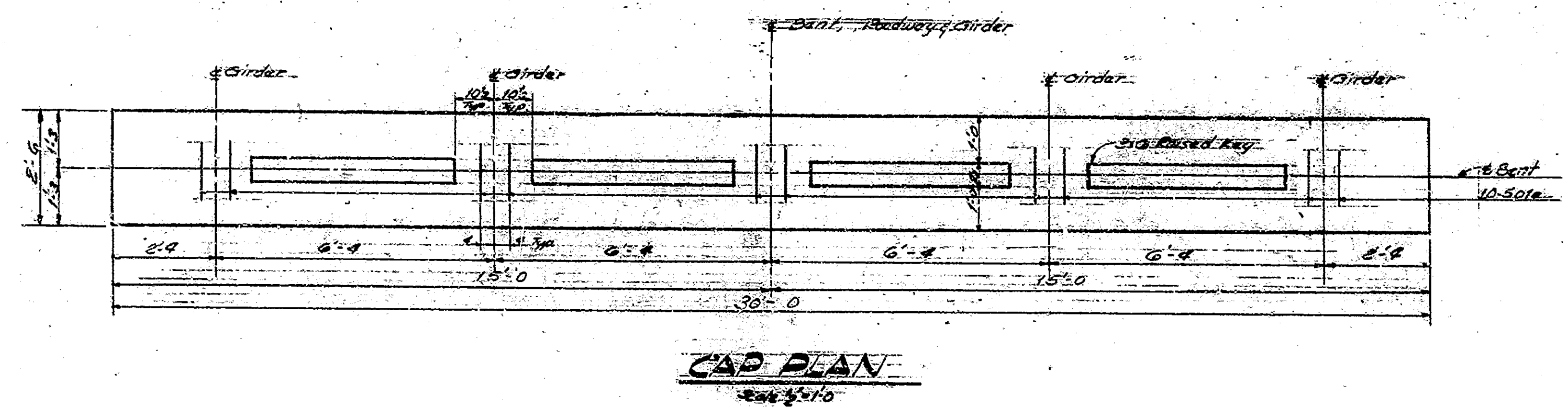
DESIGNED: CKD
DRAWN: RFD CKD, RFN
TRACED: L.R. CKD, RFN 2-2-62

PROFILE ON SURVEY LINE

Note: For Field Notes see Books No. 5627 & 5628

Shoulder Grade 0-12
Box 9-4-62 Huntington Co. Ind.

BRIDGES OVER 20' SPAN					
PLN. ROAD REEL NO.	STATE	PROJECT NO.	FISCAL YEAR	SHEET NO.	TOTAL SHEETS
4	IND.	1979	1961	9	40



BENT PILE NO. 5			
BILL OF MATERIALS			
REINFORCING STEEL			
MARK	QTY	LENGTH	WEIGHT
701a	2	31'-8"	
702a	8	31'-8"	
		701a x 7.7	488*
501a	10	7'-11"	
		701a x 1.5	83*
401a	24	2'-9"	
402a	58	3'-3"	
		701a x 4	250*
		701a x 7.11	980*
CONCRETE			
Cap	20.0 cu yd		
701a	37.0 cu yd		
MISCELLANEOUS			
Steel and Wood			
Concrete Piles	148 - 7.64	11.41	
Steel Piles	40 - 7.1	300	

Notes
Bent caps not to be poured until after all has been completed up to approval of the elevation of the bottom of the cap.
For reinforcing bar notes see Bridge Std. C1.

BENTS NO. 1 & NO. 5
STATE HIGHWAY DEPARTMENT OF INDIANA

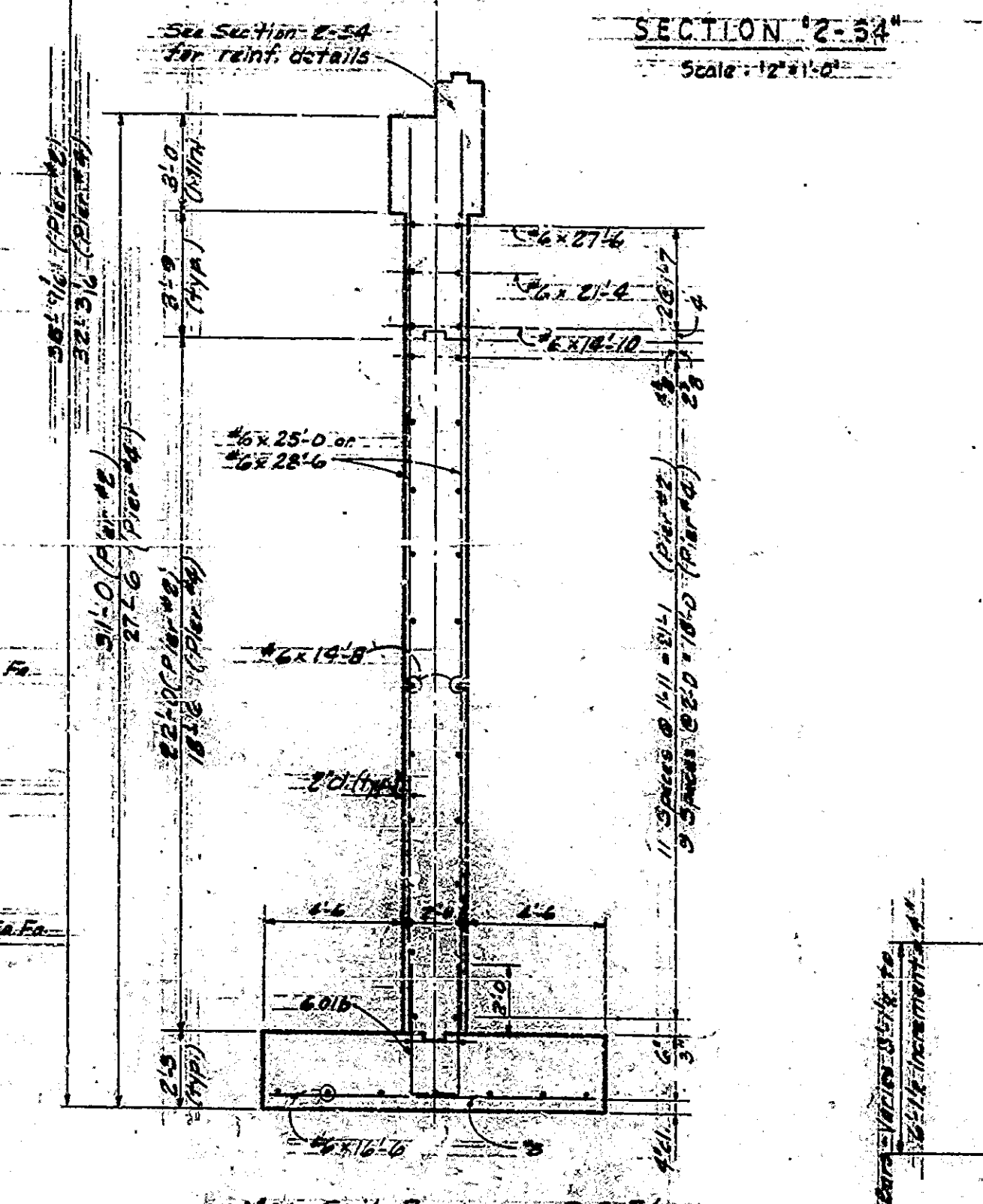
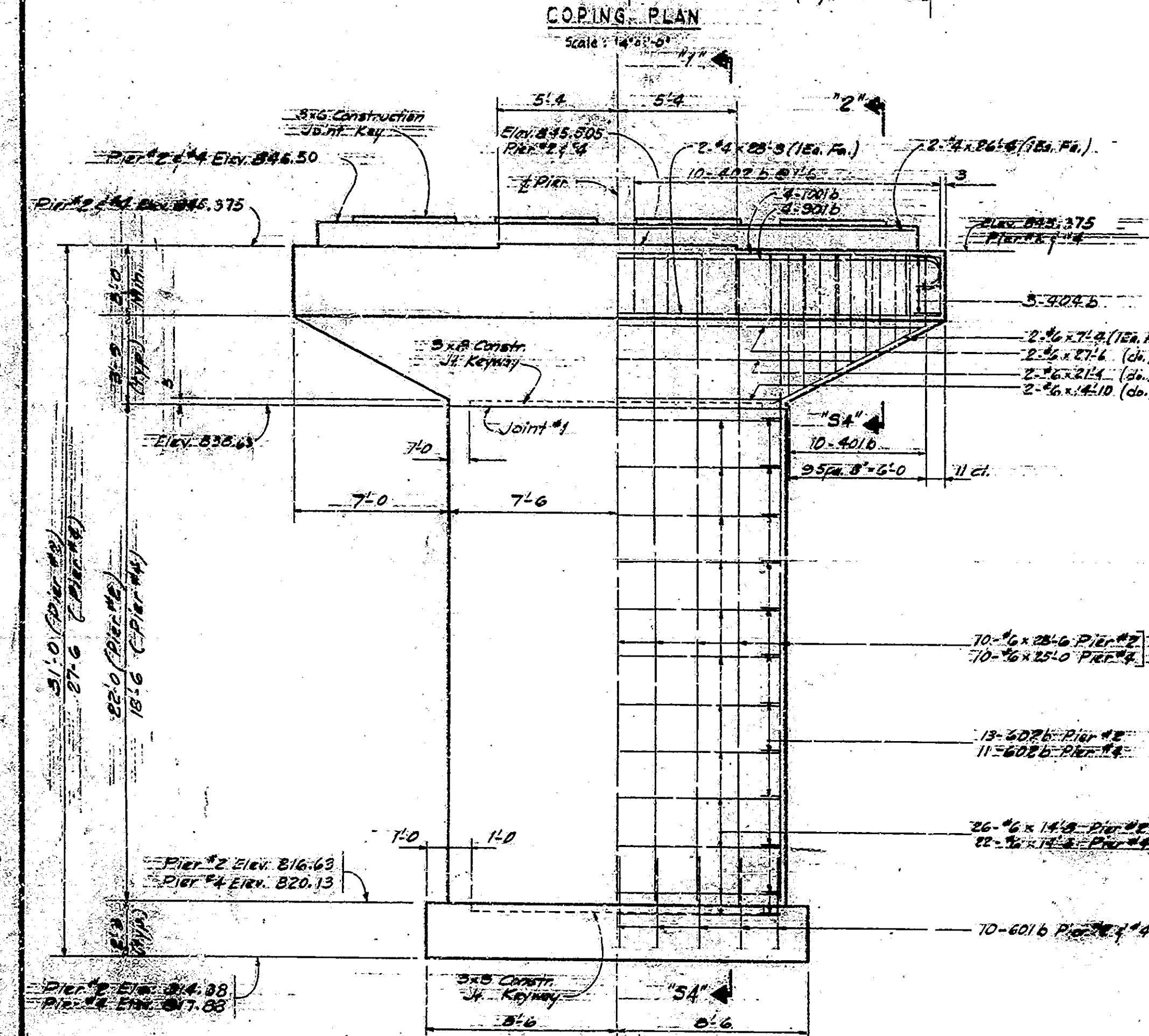
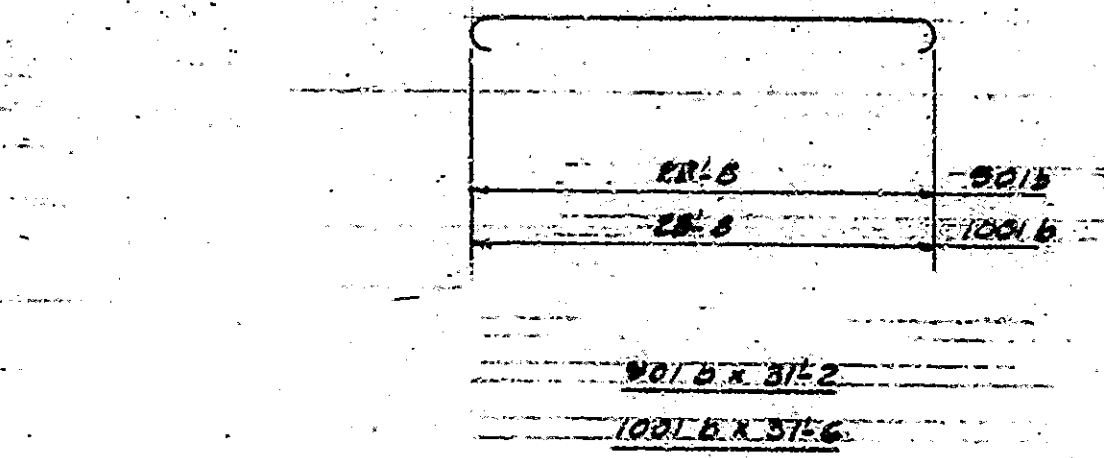
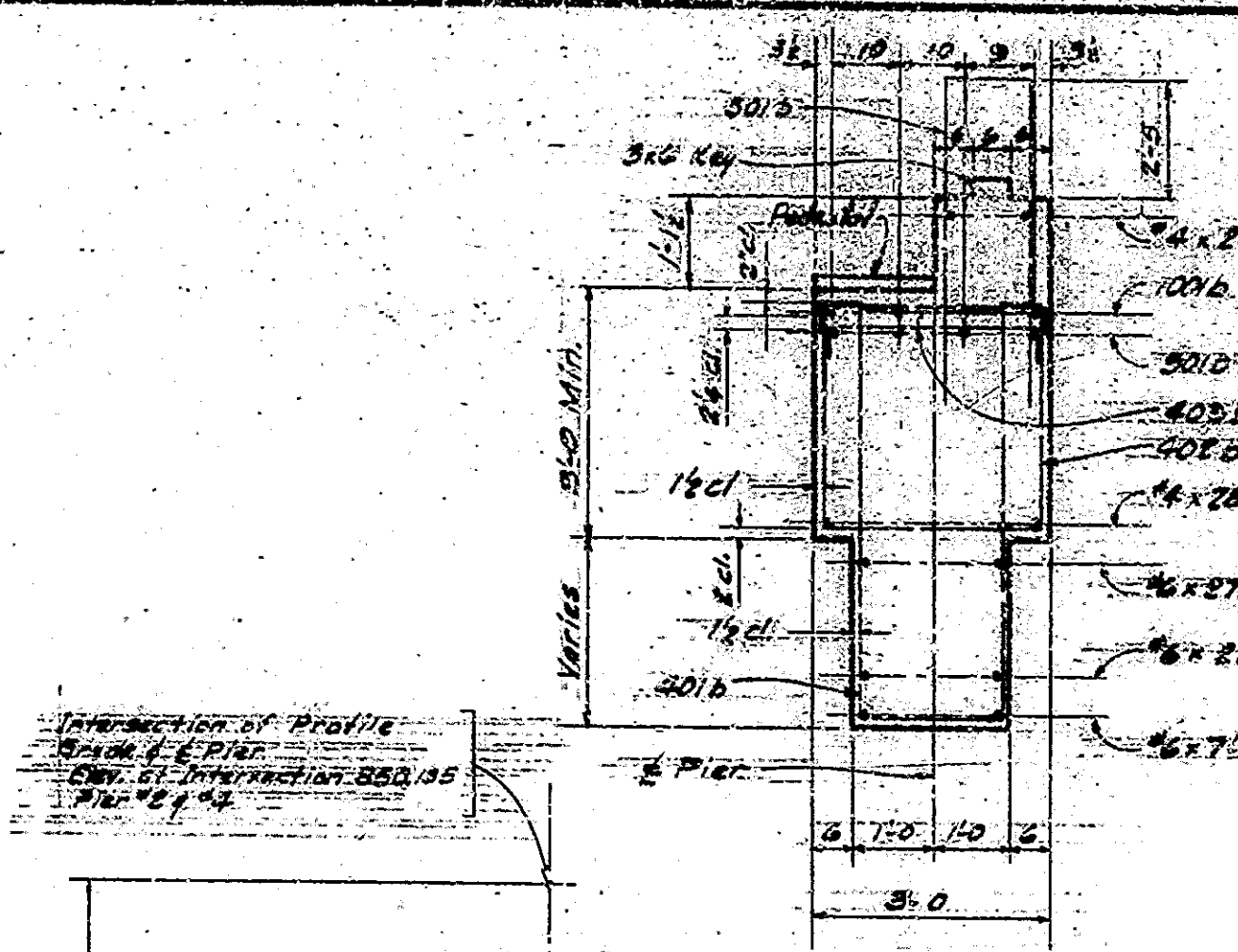
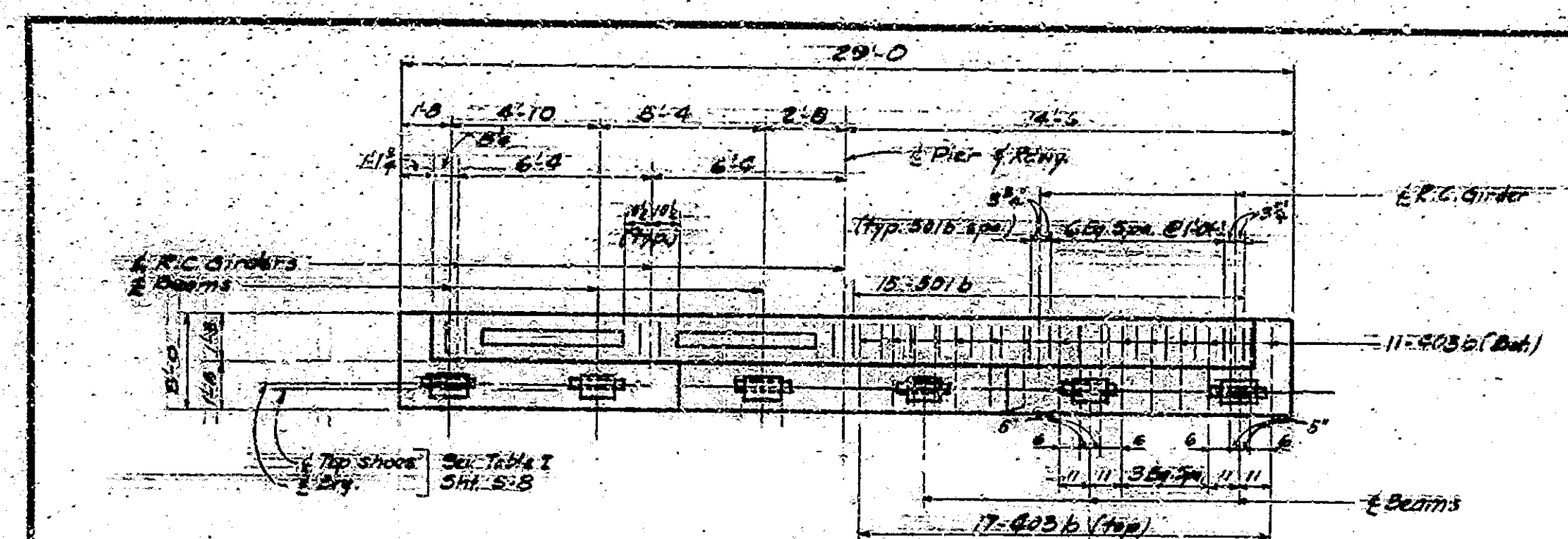
SCALE: AS NOTED
SUBMITTED FOR APPROVAL: *Raymond R. Platt* MAY 8, 1962
DRAWING: 3 OF 10
PROJECT: 69-3(19)79
BRIDGE CONTRACT NO. 6205
BRIDGE FILE: 1-69-84-479

DESIGNED: L. CKD. A.A.A.
DRAWN: A.R. CKD. E.L.H.
TRACED: A.R. CKD. E.L.H.

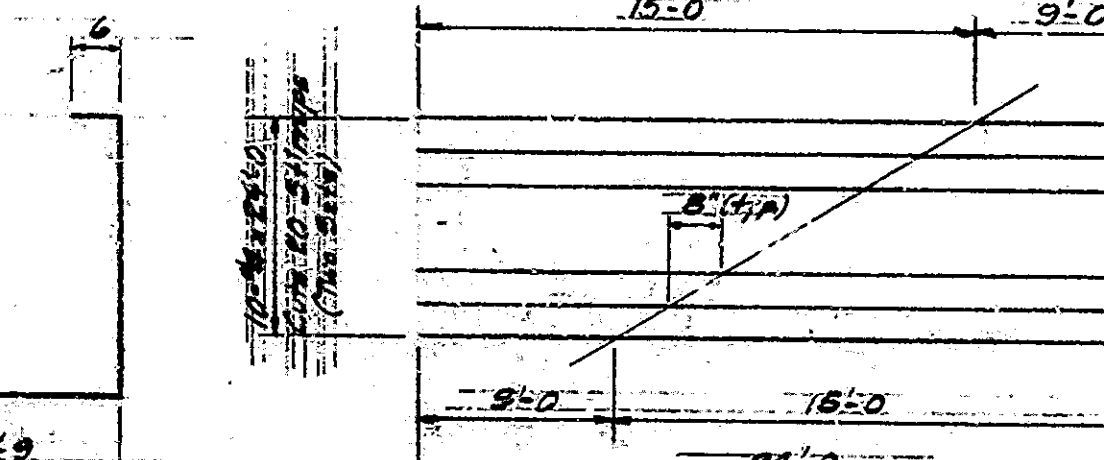
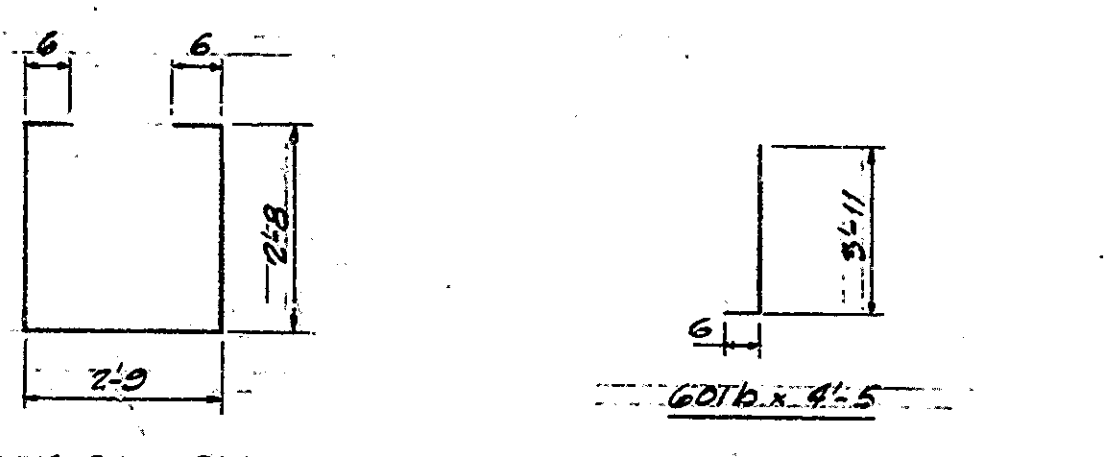
14# 7.64 Steel Encased Concrete Piles
3 Piles per Bent
Piles to be driven to 4.0 Ton Min. Brg.

Note: Reinforcement symmetrical about center line of Bent.

BRIDGES OVER 20' SPAN						
PUB. ROAD DIST. NO.	STATE	PROJECT NO.	FISCAL YEAR	SHEET NO.	TOTAL SHEETS	
4	IND.	169-3	1961	10	20	

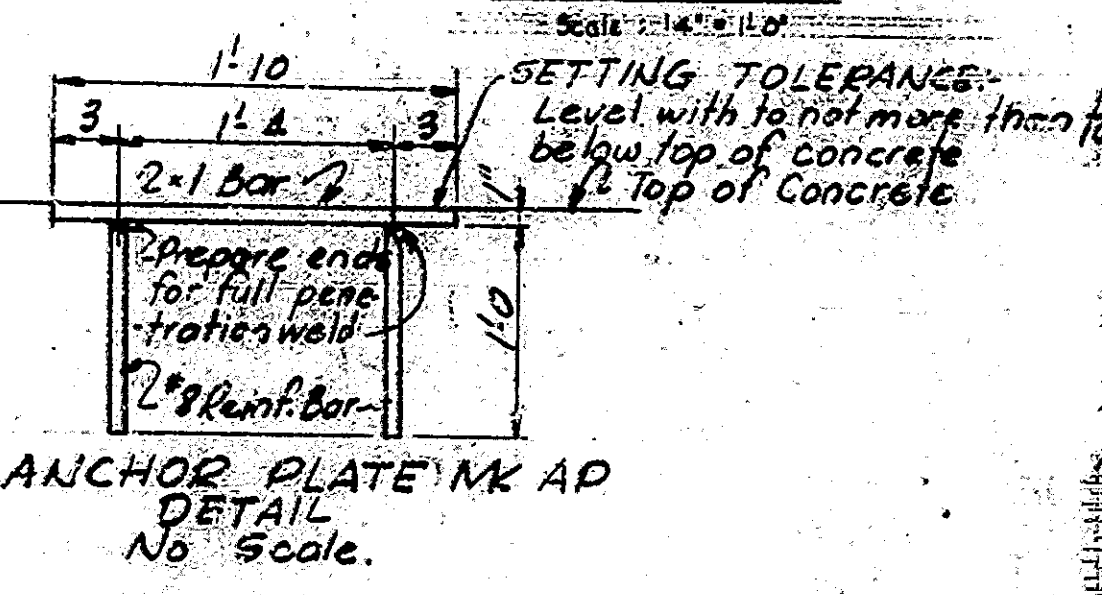


BAR SIZE	A	B	LENGTH
#2	2'-8"	6"	3'-8"
#3	2'-8"	6"	3'-8"
#4	1'-5"	4'-9"	10'-9"
#6	1'-8"	8"	2'-10"



BILL OF MATERIALS				
REINFORCING STEEL				
BAR SIZE	NUMBER	LENGTH	WEIGHT	TOTAL WEIGHT
#2	4	31'-6"	542	542
#3	4	31'-2"	428	428
#4	26	10'-6"	768	768
#6	18	4'-5"	128	128
#8	26	2'-10"	384	384
#10	7	16'-6"	168	168
#14	26	14'-8"	468	468
#16	2	27'-6"	108	108
#18	4	7'-6"	144	144
#20	2	6'-4"	128	128
#22	2	16'-10"	228	228
#24	18	28'-6"	1080	1080
#26	18	25'-0"	900	900
#28	30	10'-9"	384	384
#30	10	24'-0"	360	360
#36	20	10'-1"	180	180
#40	26	5'-9"	318	318
#42	6	3'-8"	144	144
#44	2	28'-6"	108	108
#48	2	28'-6"	108	108
TOTAL			5468	5468

MISCELLANEOUS	
ANCHOR PLATES MK AP	6 EACH
CONCRETE	
Class 40 in. cu. + base	17.4
Class 40 in. stem	28.4
Class 40 in. footing	11.2
Class 40 in. cap	17.4
Class 40 in. stem + base	28.5
Class 40 in. footing	11.2



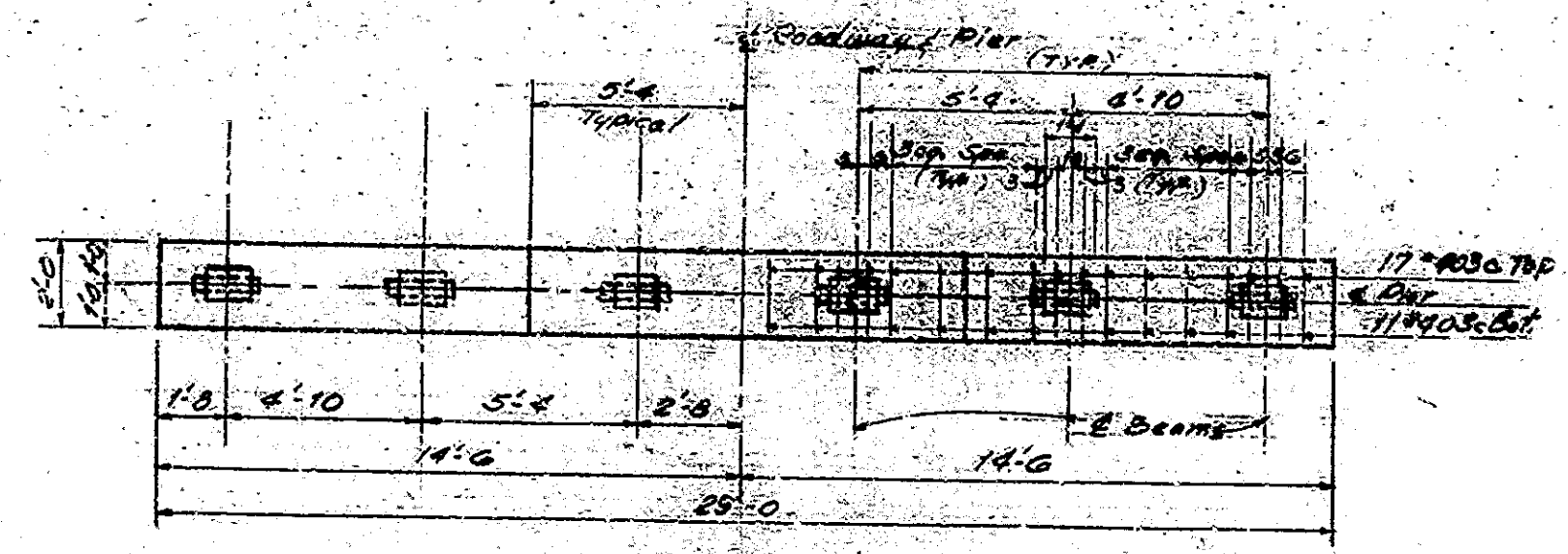
NOTES:
1. For Reinforcing Bar Notes see Bridge Bid. Cl. Anchor PL MK AP to be preset in concrete.

PIERS NO 2-4
STATE HIGHWAY DEPARTMENT OF INDIANA
SCALE: AS NOTED
SUBMITTED FOR APPROVAL: *[Signature]* MAY 8, 1962
DRAWING: 54 OF 13
PROJECT: 1-69-3(19)79
BRIDGE CONTRACT NO. 6205
BRIDGE FILE: 1-69-84-4779

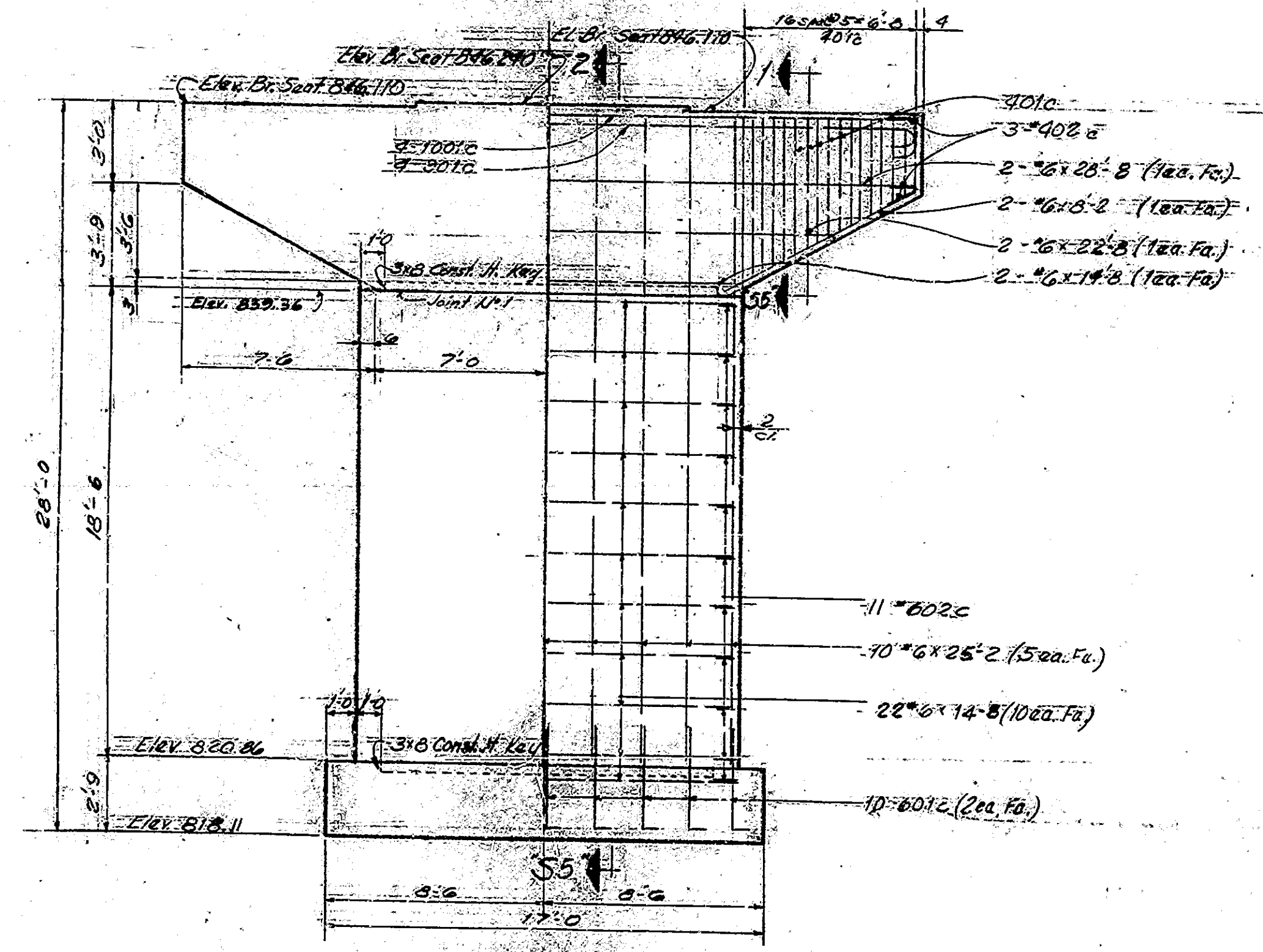
DESIGNED: J.L. CKD. A.M.A.
DRAWN: J.L. CKD. F.L.
TRACED: J.L. CKD. F.L.

FOOTING PLAN
Scale: 1/4" = 1'-0"

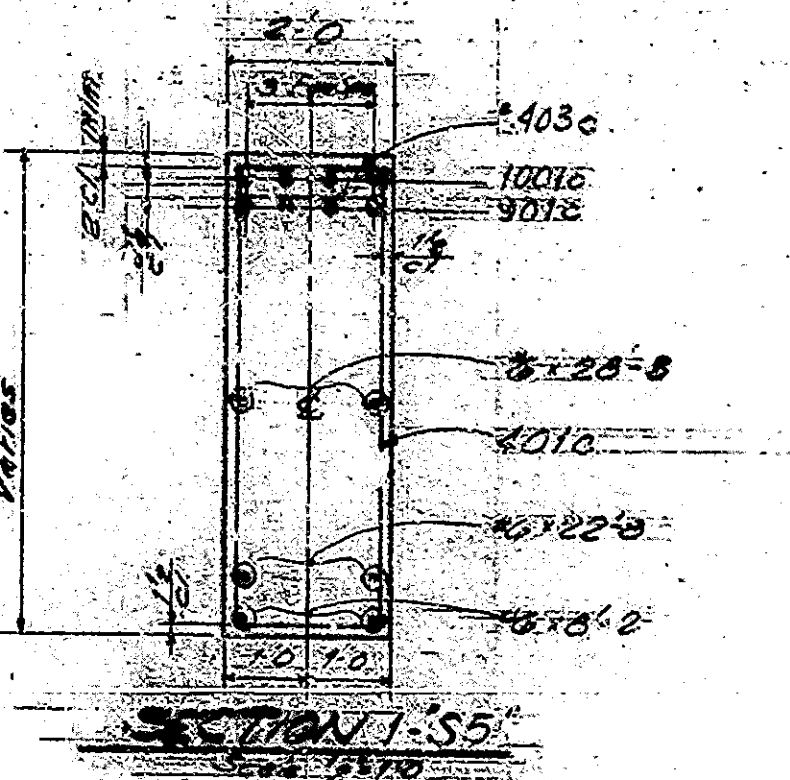
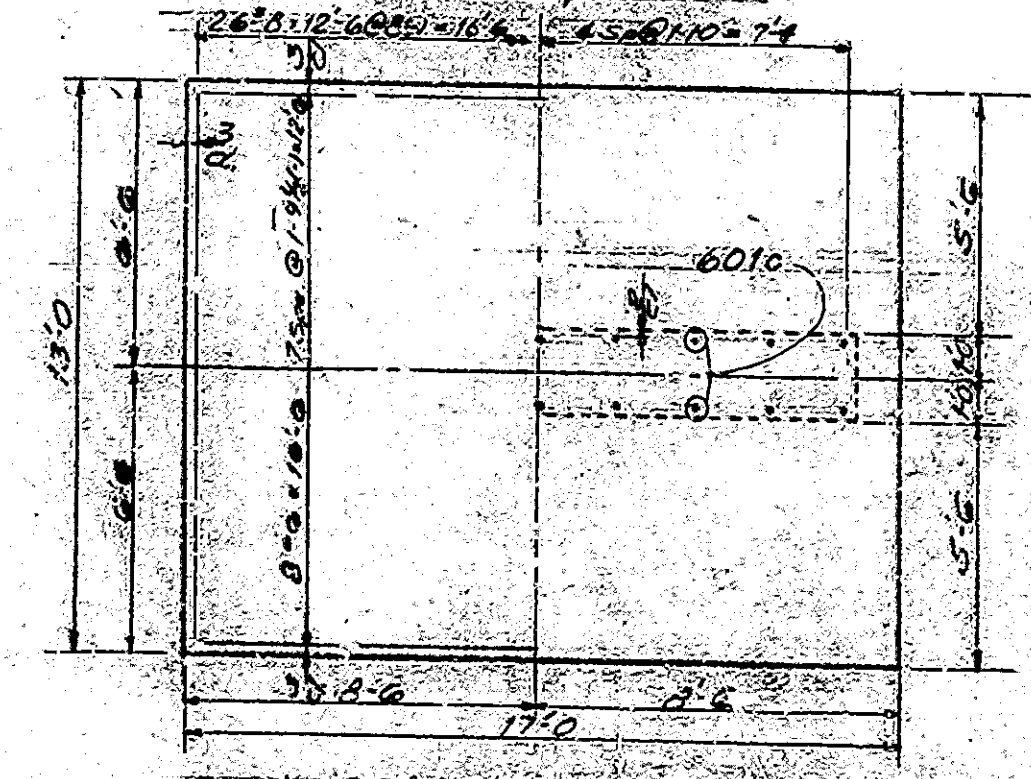
BRIDGES OVER 20' SPAN					
STATE ROAD DIST. NO.	STATE	PROJECT NO.	FISCAL YEAR	SHEET NO.	TOTAL SHEETS
4	IND.	153-3 (18) 79	1961	11	40



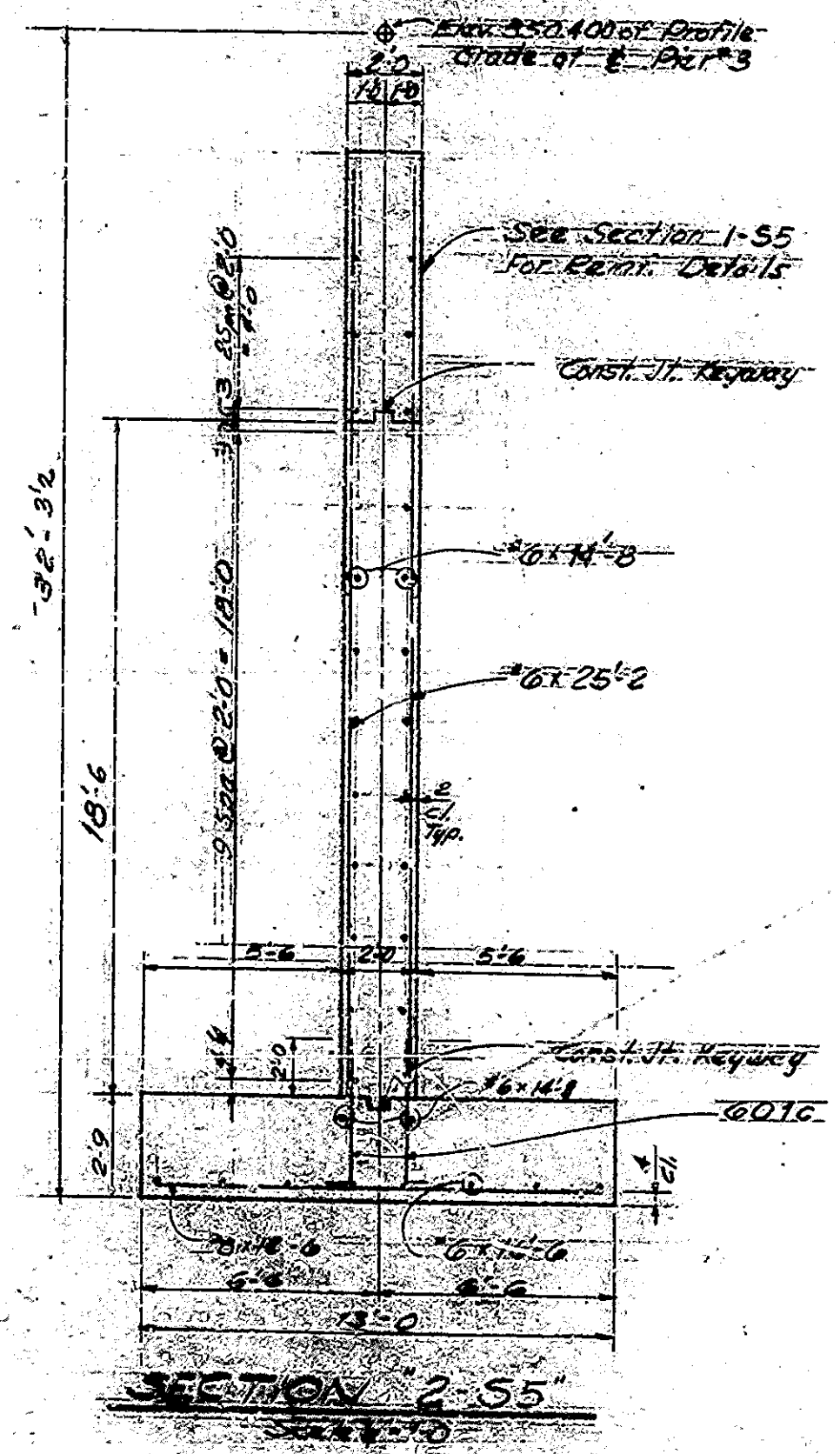
CORING PLAN
Scale 1/8"=1'-0"



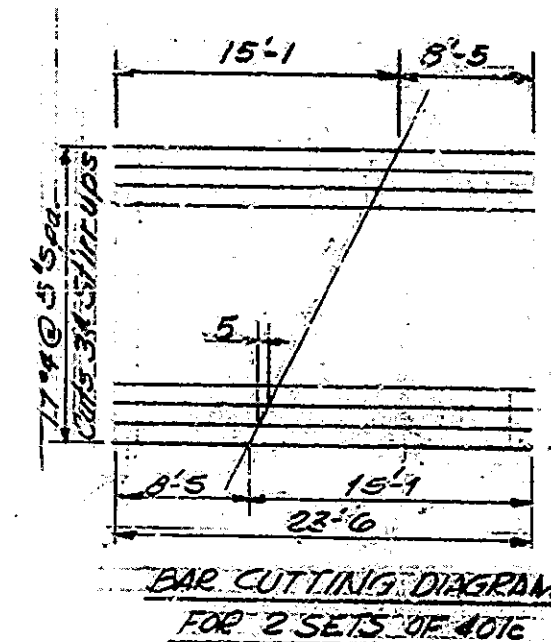
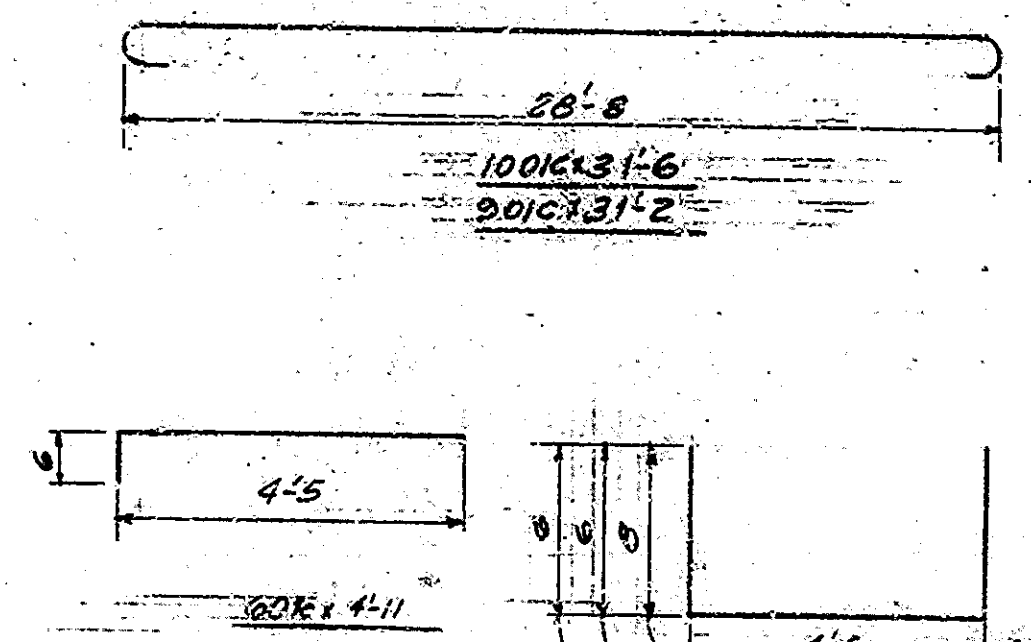
ELEVATION
Scale 1/8"=1'-0"



SECTION 1-S5
Scale 1/8"=1'-0"

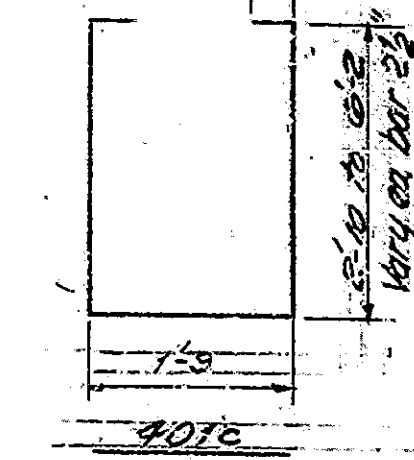


SECTION 2-S5
Scale 1/8"=1'-0"



BAR CUTTING DIAGRAM
FOR 2 SETS OF #01c

1-6	602c
1-8	402c
1-9	403c
602c x 2-10	
602c x 2-8	
403c x 2-9	



PIER NO. 3
BILL OF MATERIALS

REINFORCING STEEL			
MARK	NO. OF	LENGTH	WEIGHT
SIZE	PIERS		
1001c	4	51'-6"	542#
		TOTAL #10	542#
901c	4	37'-2"	424#
		TOTAL #9	424#
		TOTAL #8	468#
401c	26	12'-6"	468#
		TOTAL #8	468#
601c	18	4'-11"	
602c	22	2'-10"	
60	2	28'-8"	
60	18	2'-5"	
60	2	22'-	
60	8	16'-6"	
60	22	14'-8"	
60	4	3'-0"	
		TOTAL #6	1,003#
401c	17	23'-6"	
402c	6	2'-8"	
403c	56	2'-9"	
		TOTAL #4	381#
		TOTAL STEEL 4,000#	

CONCRETE

Class F in Cap. above J.N.T.	12.5 Cu. Yd.
Class F above J.N.T.	20.0 Cu. Yd.
Class F footing	22.4 Cu. Yd.

MISCELLANEOUS

Anchor & NK AP	6 Each
----------------	--------

Note:
See Section 54 for notes.
For Details of Anchor & NK AP see drwg. 54.
Anchor & NK AP to be pre-set in concrete. See
drwg. 54.

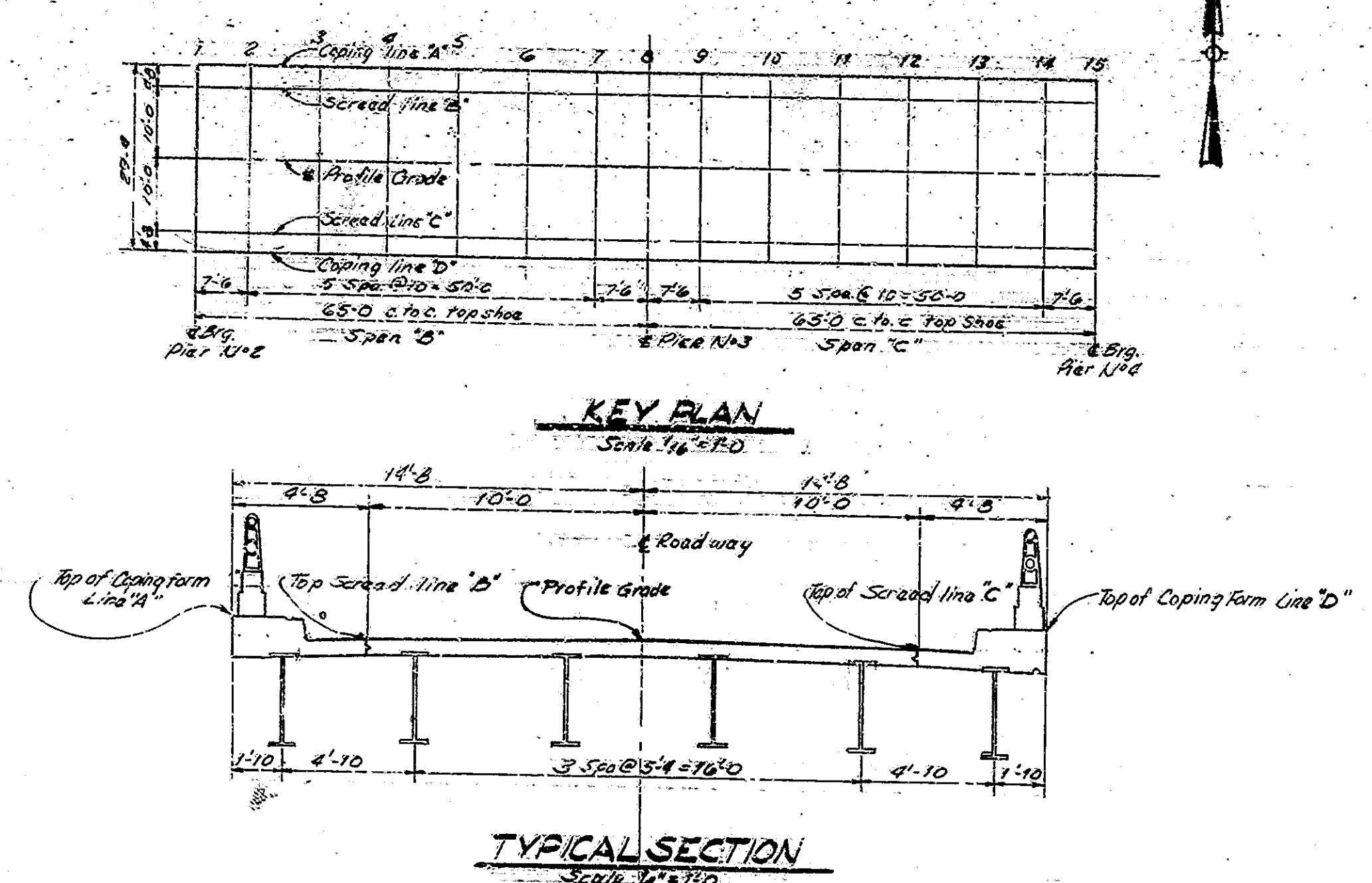
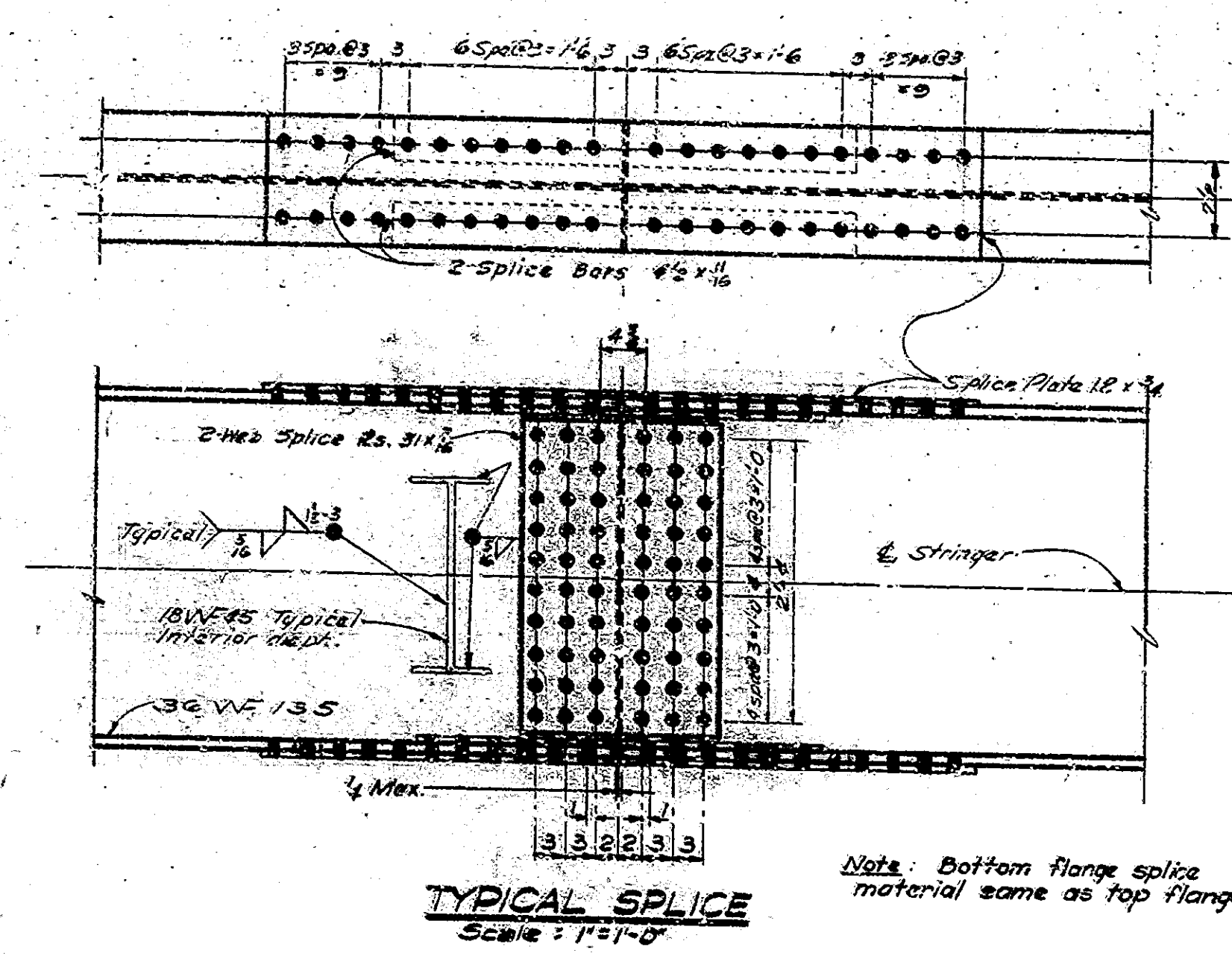
PIER NO. 3
STATE HIGHWAY DEPARTMENT OF INDIANA

SCALE: AS NOTED
SUBMITTED FOR APPROVAL: *Ronald Platt*
MAY 8, 1962
DRAWING: 55 OF 10
PROJECT: I-69-3-19373
BRIDGE CONTRACT NO. 6205
BRIDGE FILE: I-69-3779

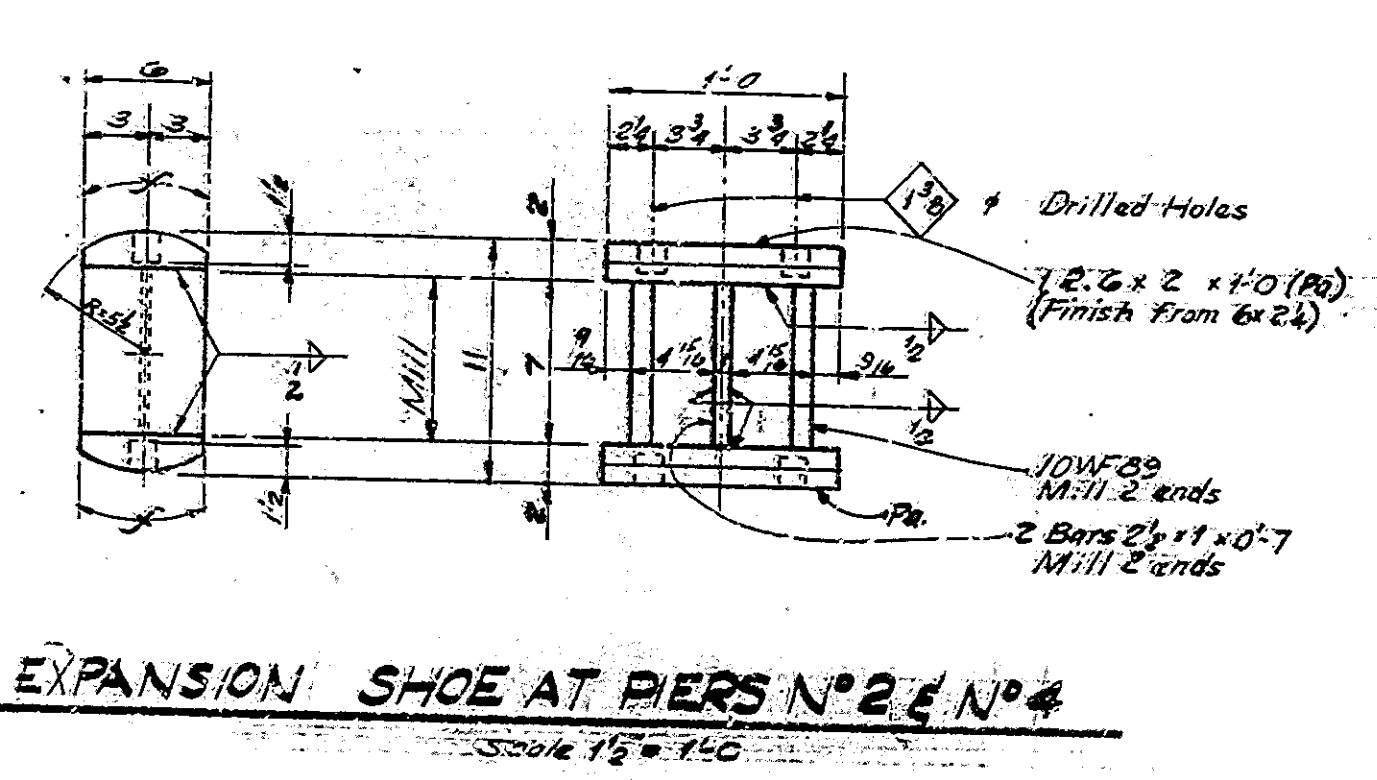
DESIGNED: EL
DRAWN: DBC
TRACED: DBC
CHKD: JANA
CHKD: FLJUC
CHKD: FLJUC

Rev. 7-4-69 Anchor & NK AP
Rev. 2-11-68 Pier Dimensions

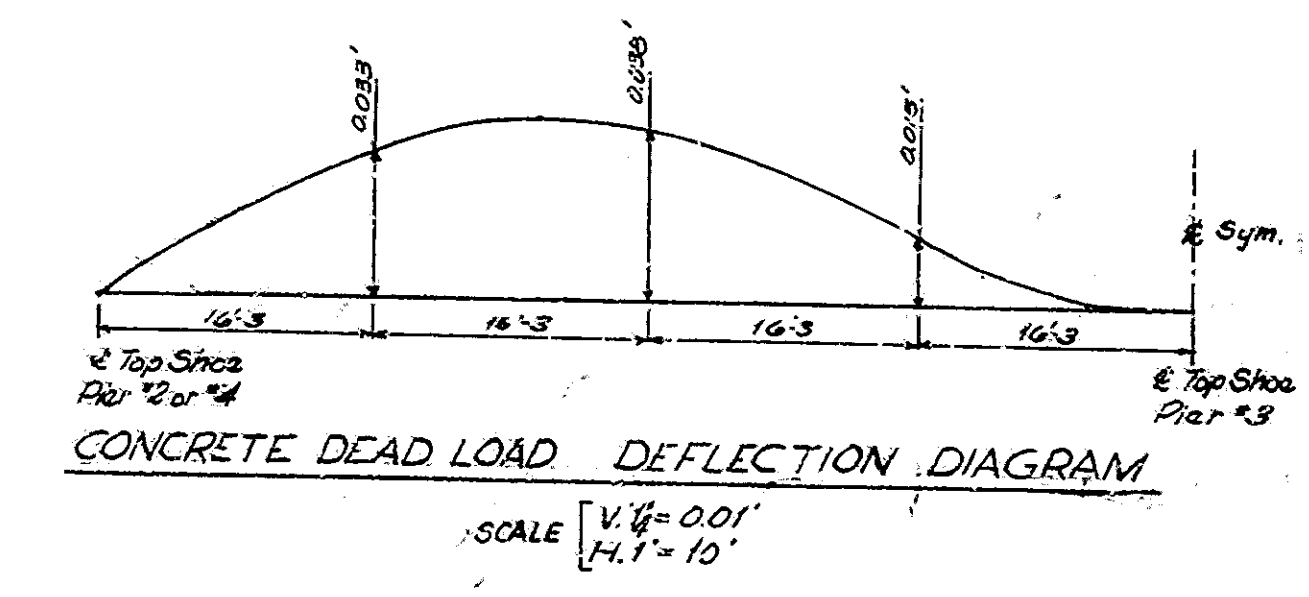
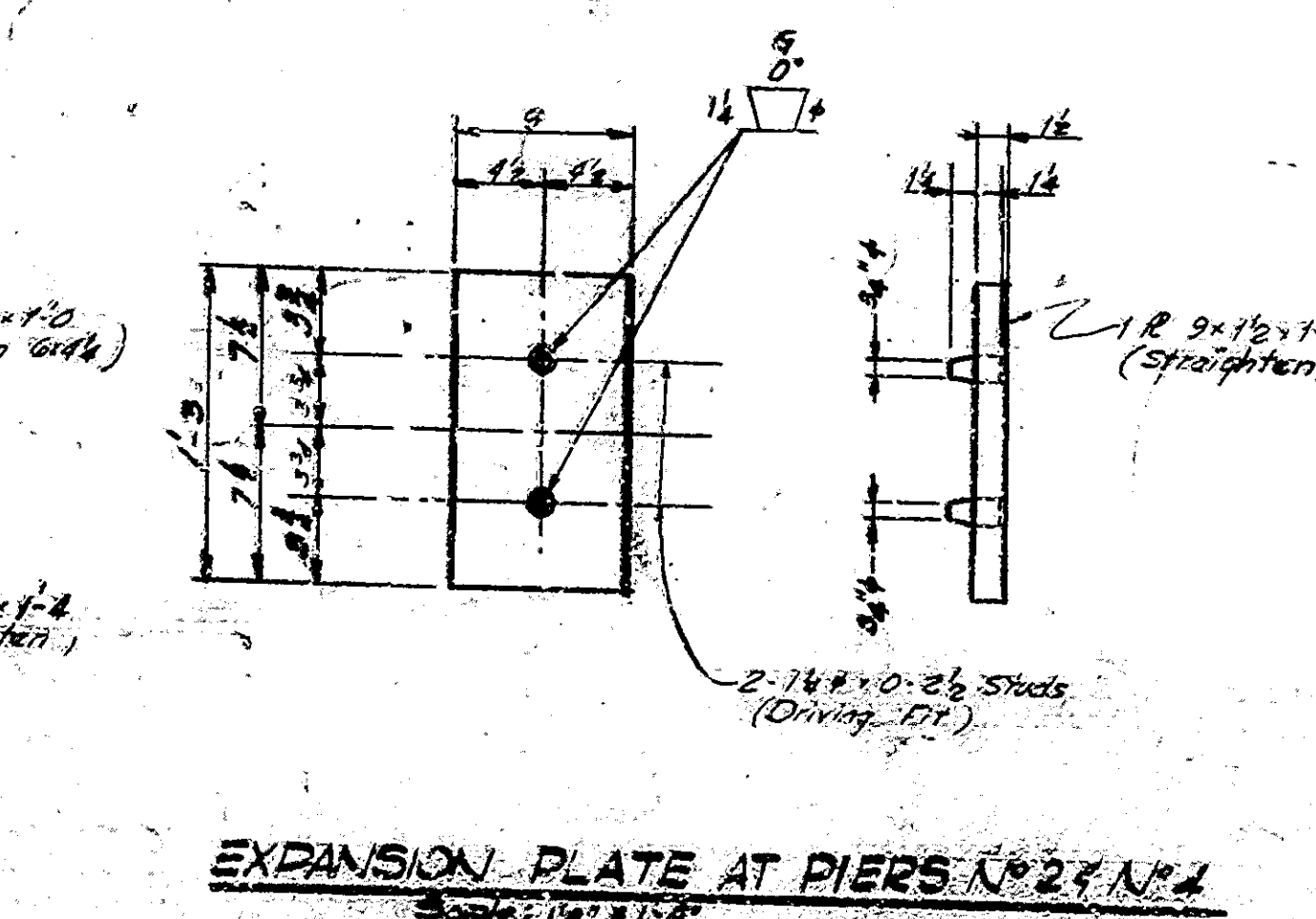
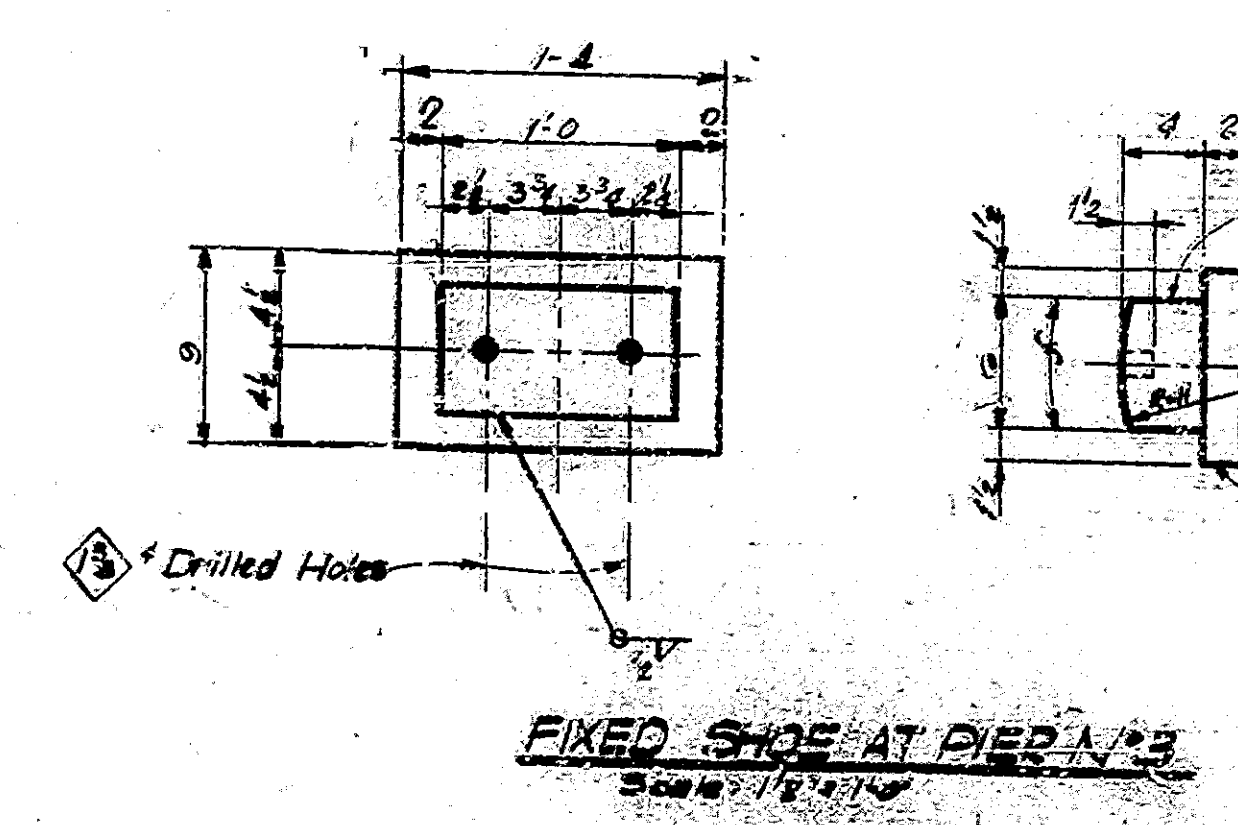
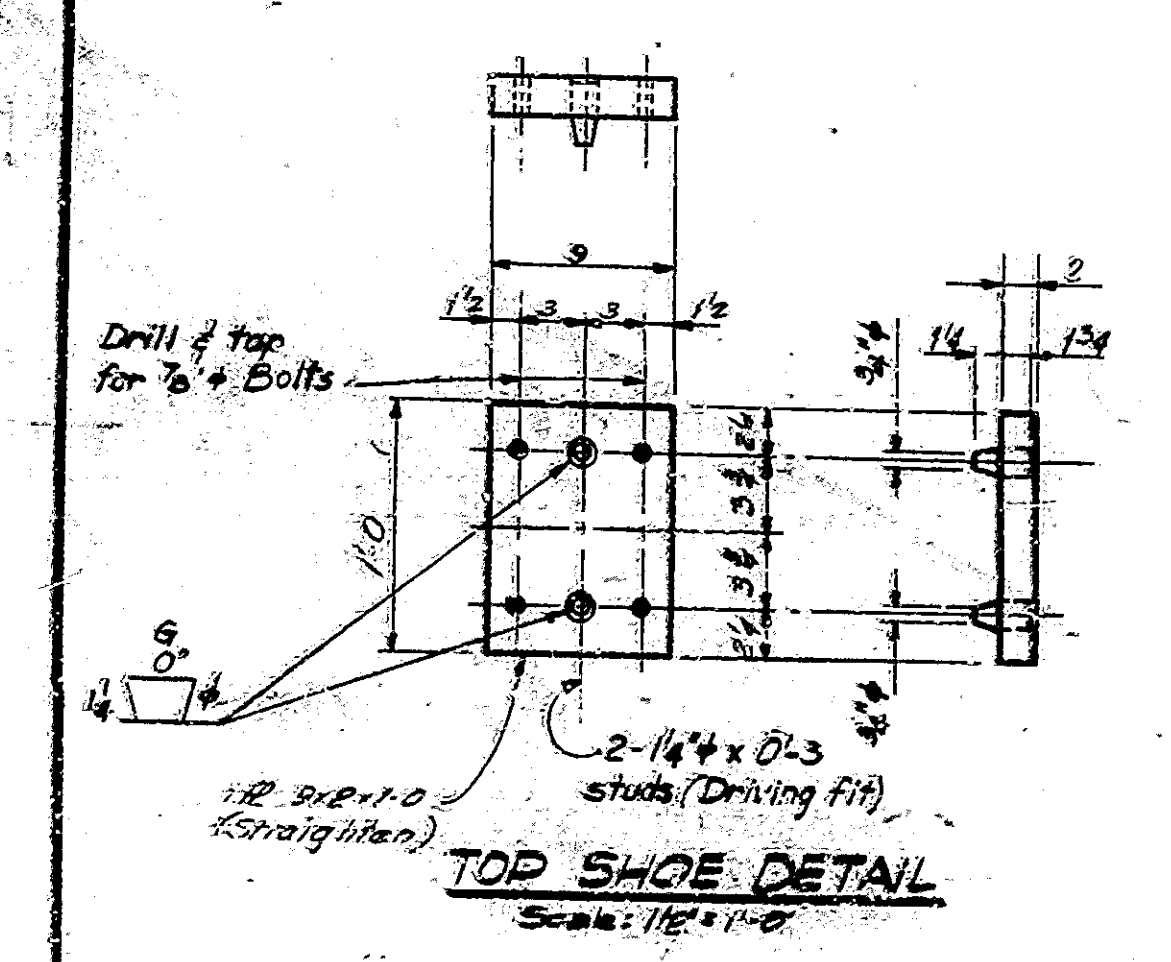
BRIDGES OVER 20' SPAN					
PUR. ROAD DIV. NO.	STATE	PROJECT NO.	FISCAL YEAR	SHEET NO.	TOTAL SHEETS
4	IND.	59-3 (1979)	1962	75	40



- GENERAL PROCEDURE**
1. After all structural steel has been erected and riveting and welding completed, adjust the superstructure longitudinally, so that the dimension "C" from the centerline of top shoes to face of curtain wall of Pier #2 & Pier #4 are equal. See Dwg. 58.
 2. With the superstructure in adjusted position called for in item 1 above, weld the fixed shoes to the anchor plates at Pier #2's.
 3. Adjust the expansion plates under each expansion shoe in accordance with dimensions "A" & "B" in Table I for the prevailing temperature. Note that dimension "A" is always the distance from a vertical line through the centerline of the top shoe in a direction away from the fixed shoe. Weld the bearing plates to the anchor plates at Piers 2 & 4.
 4. After the shoes are set, take elevations at all screed points on top of adjacent beam. Enter these elevations in "Table of Elevations". Subtract these elevations from the tabulated elevations and use resulting dimensions as the height for setting the screed or coping form above that point. This dimension remains constant regardless of how much or in what order the concrete is poured. Do not set screed or coping forms by leveling.
 5. No concrete in the floor is to be poured until the above operations are complete.



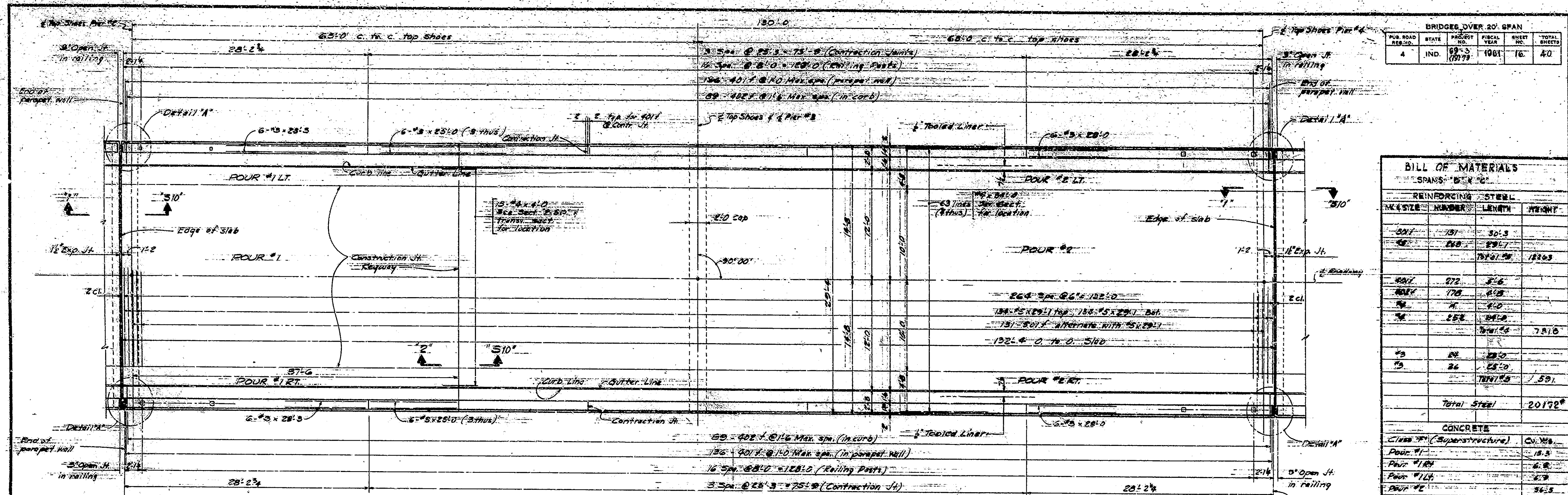
LINE	1'	2	3	4	5	6	7	8	9	10	11	12	13	14	15
A	Elev Top of Coping Form	850.870	850.945	851.025	851.115	851.130	851.130	851.130	851.130	851.115	851.085	851.025	850.945	850.870	
	Elev Top of Beam														
	Dist. Top of Beam to top of Coping														
B	Elev Top of Screed	850.040	850.110	850.190	850.250	850.280	850.295	850.295	850.295	850.295	850.280	850.250	850.190	850.110	850.040
	Elev Top of Beam														
	Dist. Top of Beam to top of Screed														
C	Elev Top of Screed	850.040	850.110	850.190	850.250	850.280	850.295	850.295	850.295	850.295	850.280	850.250	850.190	850.110	850.040
	Elev Top of Beam														
	Dist. Top of Beam to top of Screed														
D	Elev Top of Coping Form	850.870	850.945	851.030	851.085	851.115	851.126	851.130	851.130	851.130	851.115	851.085	851.025	850.945	850.870
	Elev Top of Beam														
	Dist. Top of Beam to top of Coping														



STEEL DETAILS AND SCREEDS
STATE HIGHWAY DEPARTMENT OF INDIANA

SCALE: AS NOTED.
SUBMITTED FOR APPROVAL: *Raymond R. H. J.* MAY 2, 1962
DRAWING: 59 OF 10
PROJECT: I-69-3(1979)
BRIDGE CONTRACT NO. 655-6205
BRIDGE FILE: I-69-84-1779

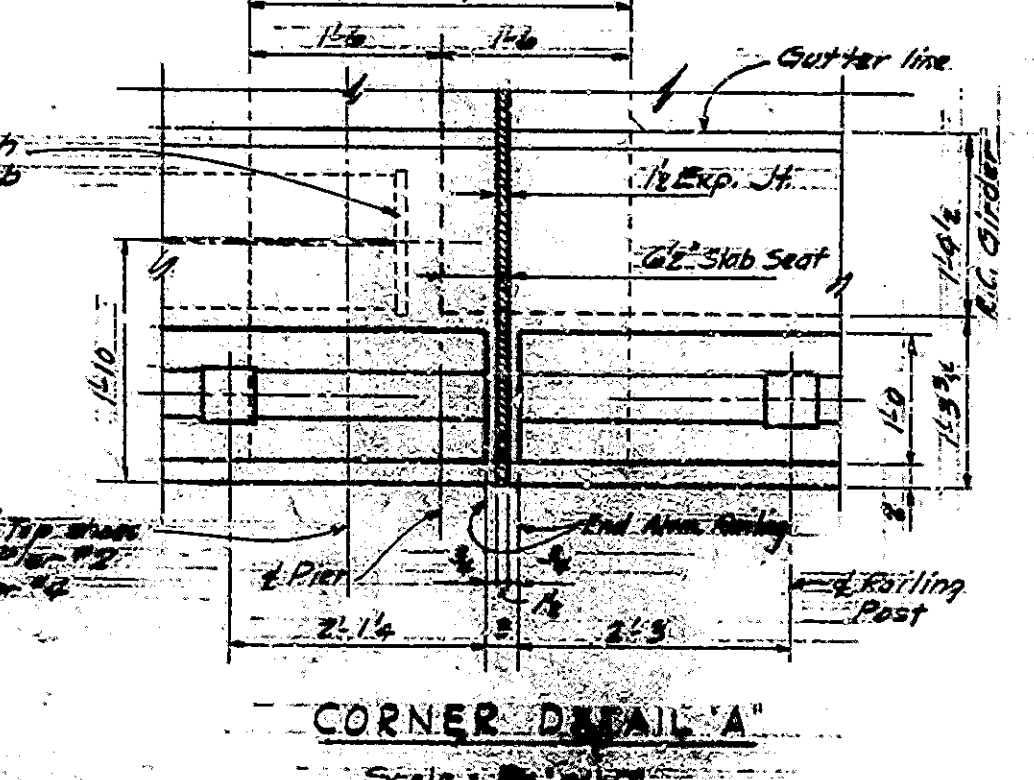
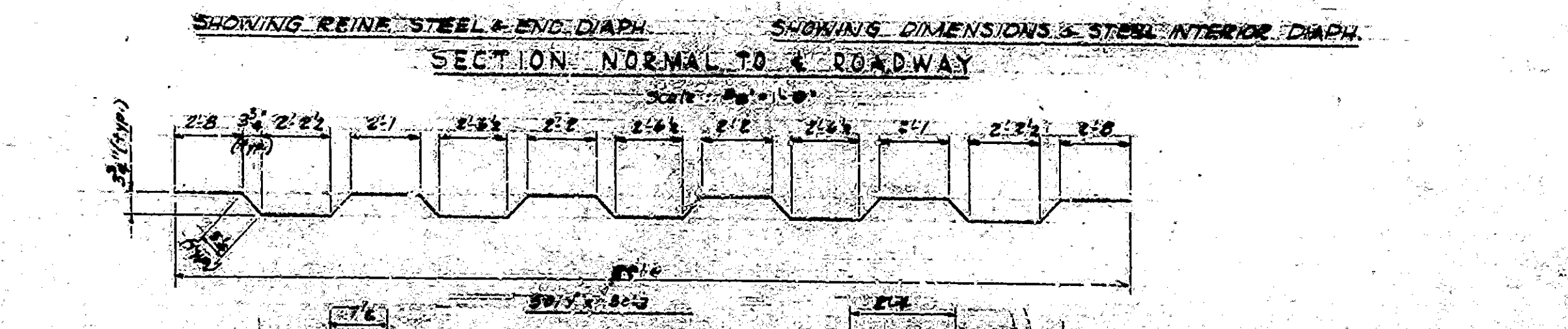
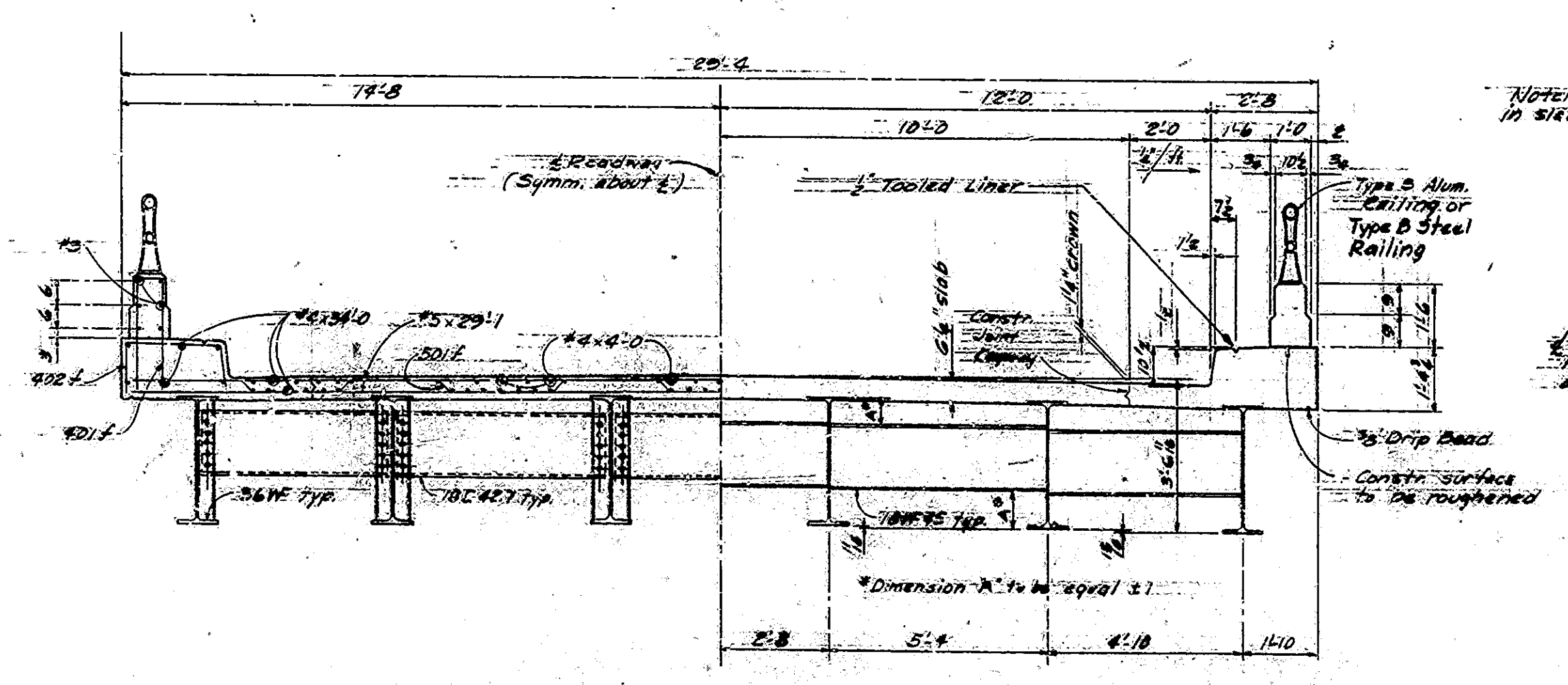
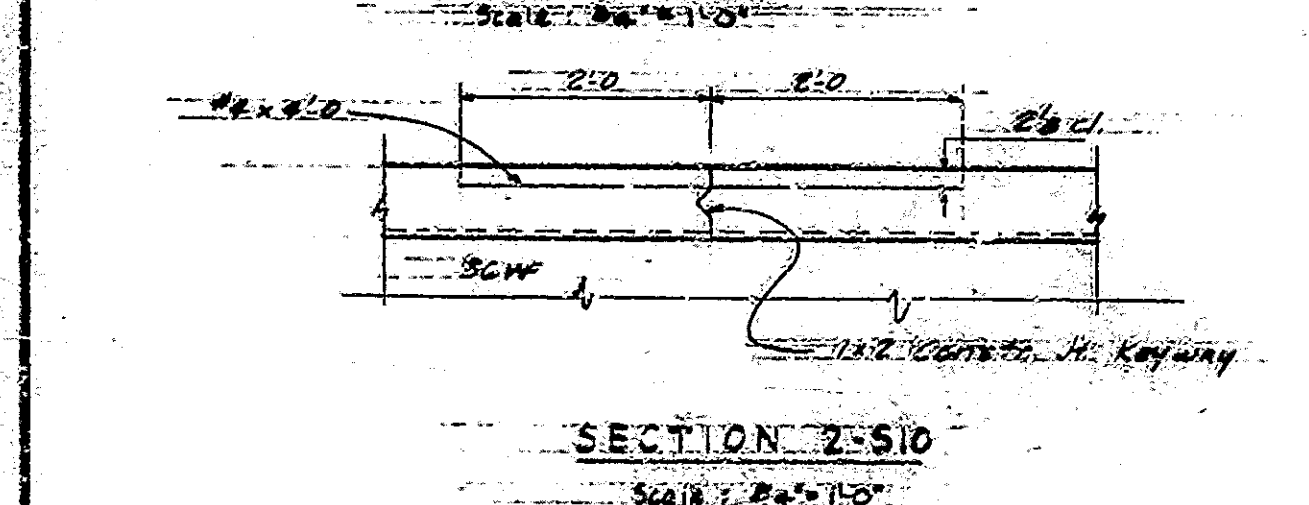
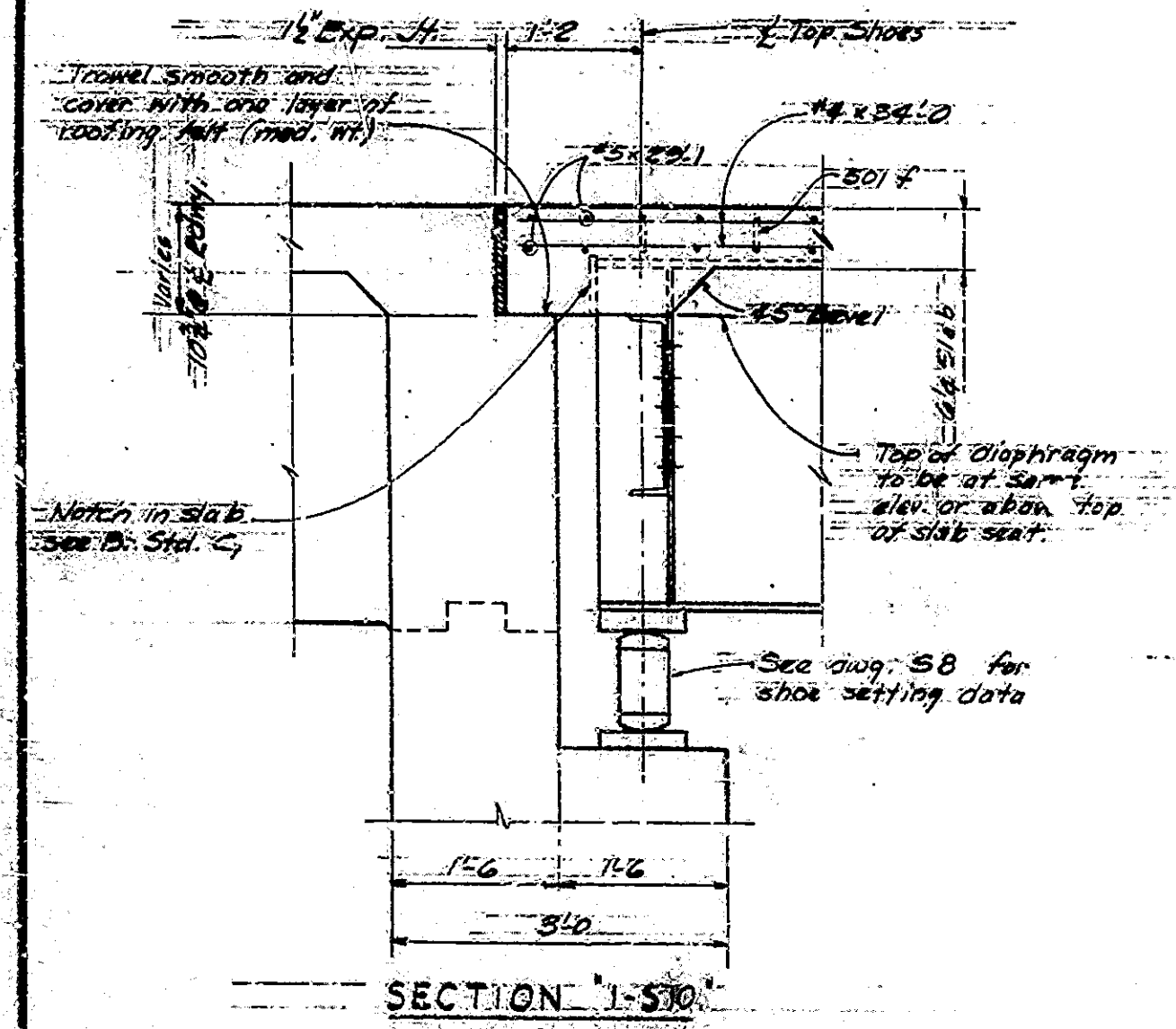
DESIGNED: EL CKD: ANJ
DRAWN: JMB CKD: JMB
TRACED: JMB CKD: JMB



BRIDGES OVER 20' SPAN					
PUB. ROAD DIST. NO.	STATE	PROJECT NO.	FISCAL YEAR	SHEET NO.	TOTAL SHEETS
4	IND.	69-3 (1979)	1961	16	40

BILL OF MATERIALS			
SPANS 'B' & 'C'			
REINFORCING STEEL			
NO.	SIZE	NUMBER	WEIGHT
1	#11	181	301.3
2	#10	260	295.7
			597.0
3	#11	272	31.6
4	#10	170	21.0
5	#8	7	2.0
6	#8	252	34.0
			74.6
7	#8	24	2.0
8	#8	26	2.0
			4.0
			78.6
			201.22
CONCRETE			
CLASS	(Superstructure)	CY	WT.
Pour #1		18.5	
Pour #2		6.8	
Pour #3		2.8	
Pour #4		36.5	
Pour #5		10.6	
Pour #6		16.4	
Pour #7		30.8	
		13.3	
MISCELLANEOUS			
Railing - Type 3 or B		268.8	Lb.

PLAN - SPANS 'B' & 'C'
Scale: 1/4" = 1'-0"



NOTES:
1. Reinforcing bar notes see Dr. 310-C.
2. All steel work structural steel - K. design for 6' spans.
3. All steel work made in shop - see pour numbers.
4. Reinforcing bars shall be lap spliced and lapped bars shall be staggered.
5. All reinforcement shall be placed in the pour.
6. Construction joints shall be placed in the plan.
7. For railing details see Dr. 310-C & D.

PLAN - SPANS 'B' & 'C'
STATE HIGHWAY DEPARTMENT OF INDIANA
SCALE: AS NOTED
SUBMITTED FOR APPROVAL: *Raymond H. Hest*
MAY 8, 1962
DRAWING: S10 OF 10
PROJECT: 1-69-3(19)79
BRIDGE CONTRACT NO. G.P.S. 6205
BRIDGE FILE: 1-69-94-4779

DESIGNED: *H.C.* CKD *H.N.A.*
DRAWN: *H.C.* CKD *J.C.*
TRACED: *H.C.* CKD *J.C.*

Rev. 1-69-3(19)79 & Notes
Rev. 1-69-94-4779

