

SHEET NUMBER	SECTION	STRUCTURE					SUBJECT	BRIDGE CONTRACT NO.
		NO.	TYPE	SPAN	OVER	STATION		
1							Index & Title Sheet	1522
2							Plan of Paving Profile	
3	D-1	M-3	R.C. Arch	145.5 x 14.5	Pigeon River	1437+50	Plan	
4							General Plan	
5							Details	
6							Resting Piers, Bill of Materials and Details	
7							General Fundamentals, Details (Mar. 23, 1935)	
8							Type III Roadway Drain (Nov. 12, 1937)	
9							Summary	
10							Shed Cross Sections	
11							Miscellaneous Road Signs Sheet A (Feb. 1935)	
12							Details (Mar. 1937)	
13							Details (Apr. 1934)	
14							Superior Jointing & Widening Curves, Sept. 1932	
15							Details, Bored Piles, E.C. (Jan. 1936)	
16								
17								

STATE OF INDIANA
STATE HIGHWAY COMMISSION

BRIDGE PLANS

FOR SPANS OVER 20 FEET

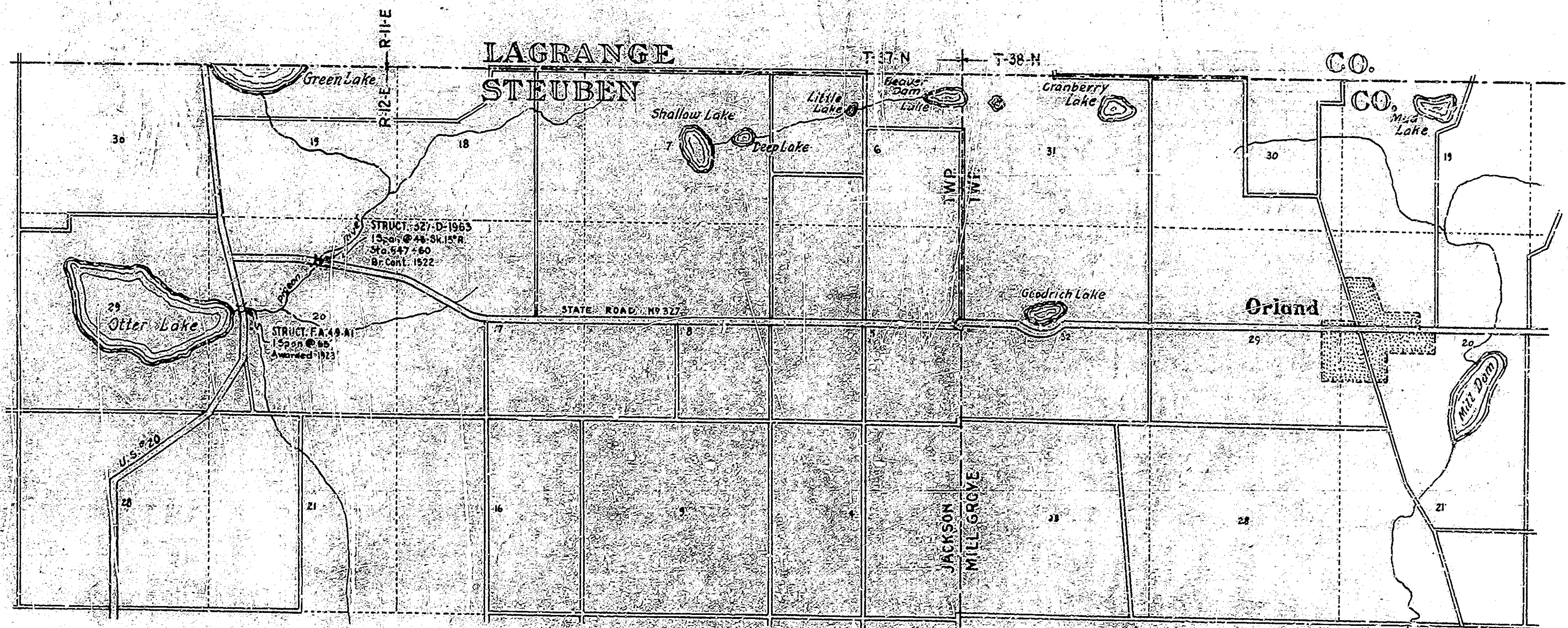
ON

STATE ROAD NO. 327 SECTION D

LOCATION OF STRUCT. 327-D-1963: ON STATE ROAD 327 IN STEUBEN CO. IN SEC. 20, T-37-N, R-12-E. OVER PIGEON RIVER APPROXIMATELY 1/2 M. N. OF U.S. ROAD 20.

PIGEON RIVER, 20 FEET SPAN					
NO.	DATE	BY	SCALE	REVISION	REMARKS
1					

SECTION D



STATE HIGHWAY COMMISSION STANDARD
BRIDGE SPECIFICATIONS, DATED SEPTEMBER 1936
TO BE USED WITH THESE PLANS.

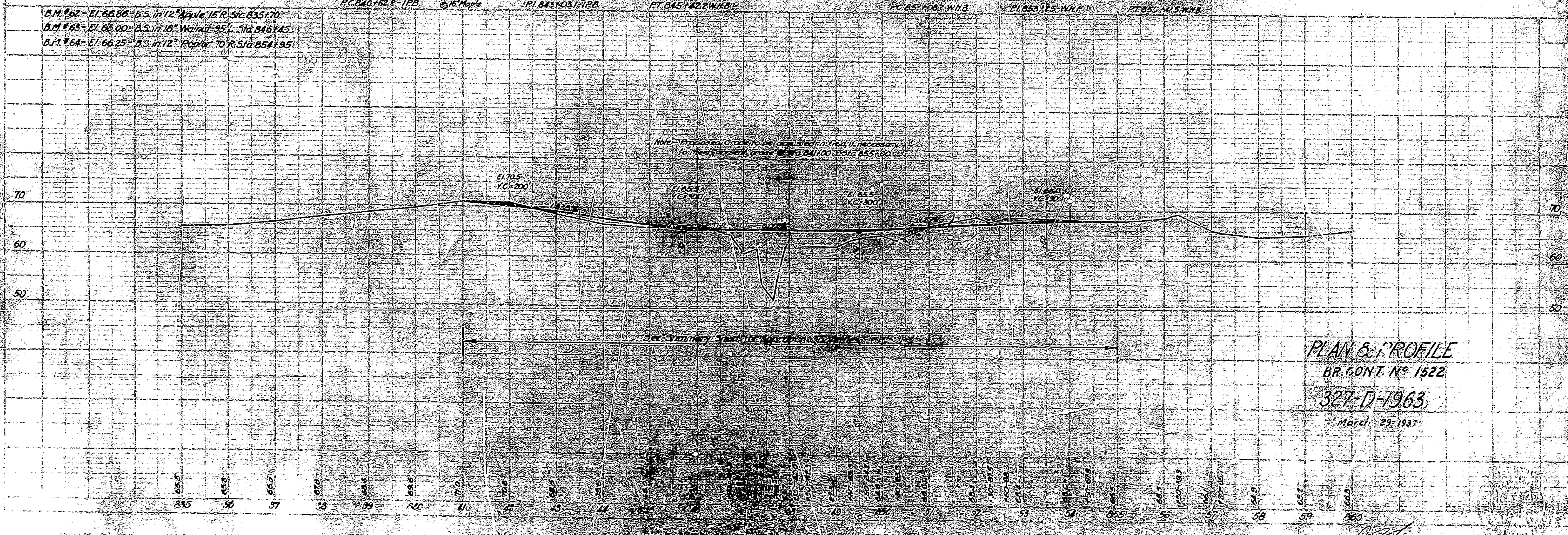
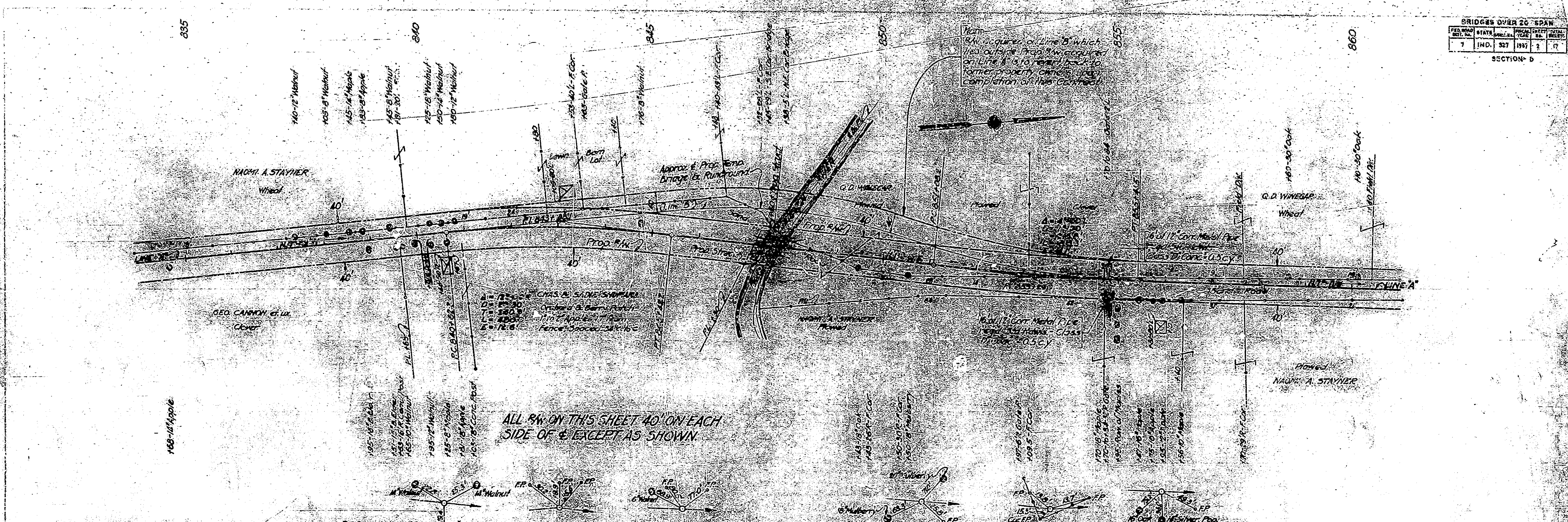
APPROVED AND ADOPTED APRIL 2, 1937
BY STATE HIGHWAY COMMISSION OF INDIANA

Earl C. ...
CHIEF ENGINEER

APPROVED APRIL 2, 1937
...
CHIEF ENGINEER

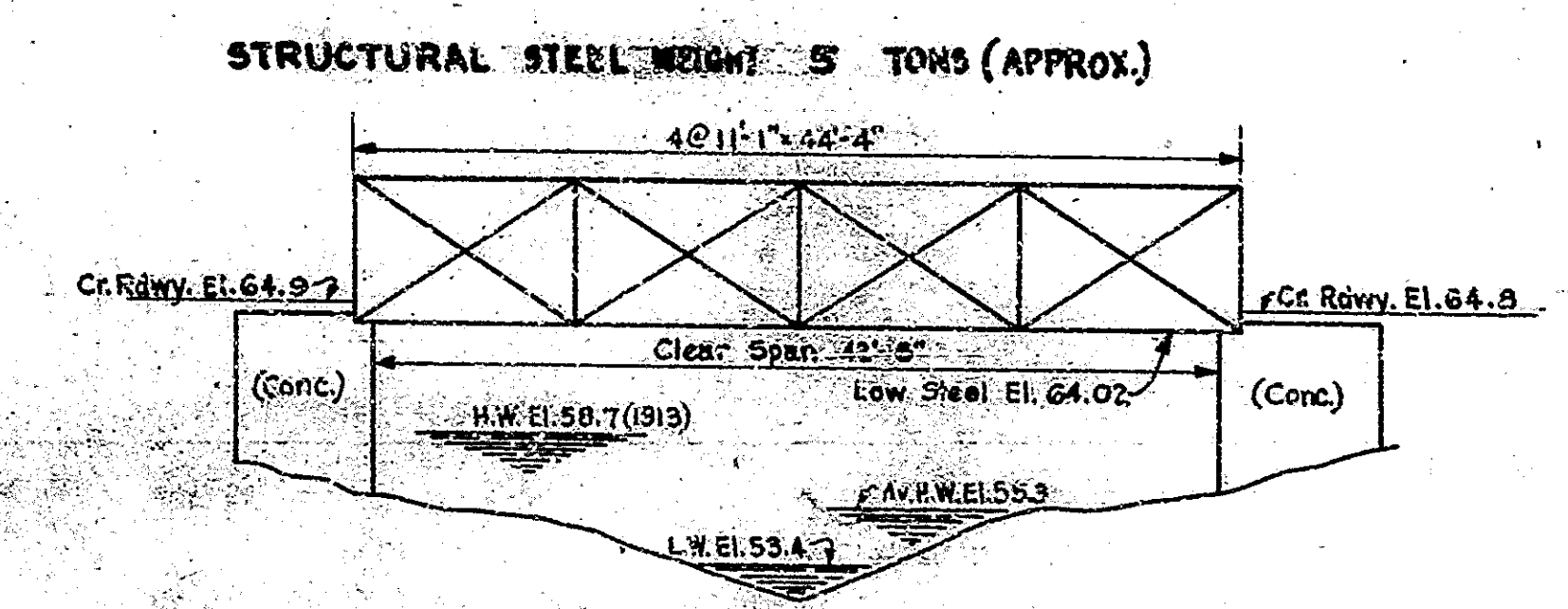
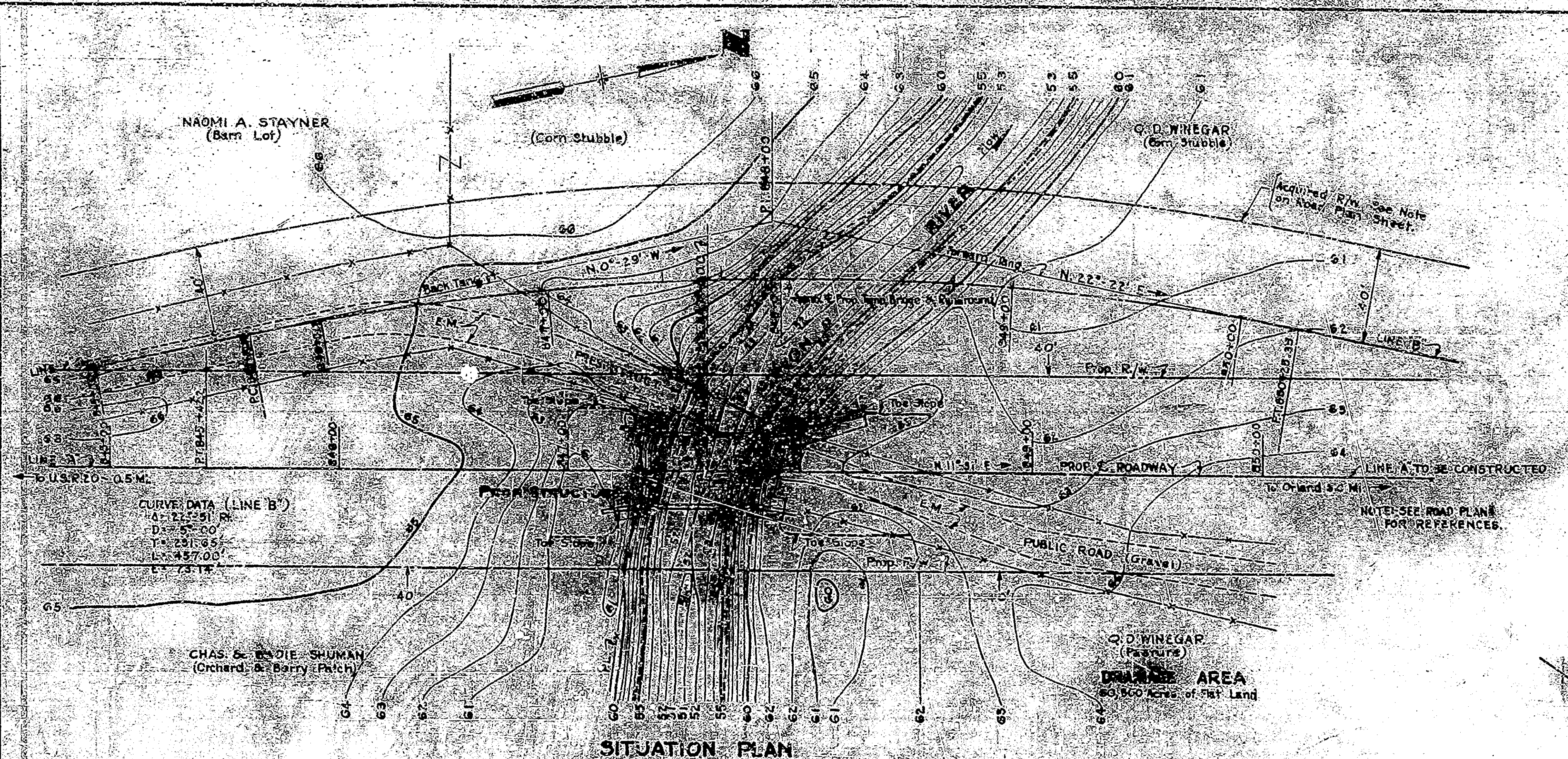
BRIDGES OVER 20' SPAN					
FED. ROAD DIST. NO.	STATE	ROUTE	PROJECT NO.	SHEET NO.	TOTAL SHEETS
7	IND.	527	1937	2	17

SECTION - D



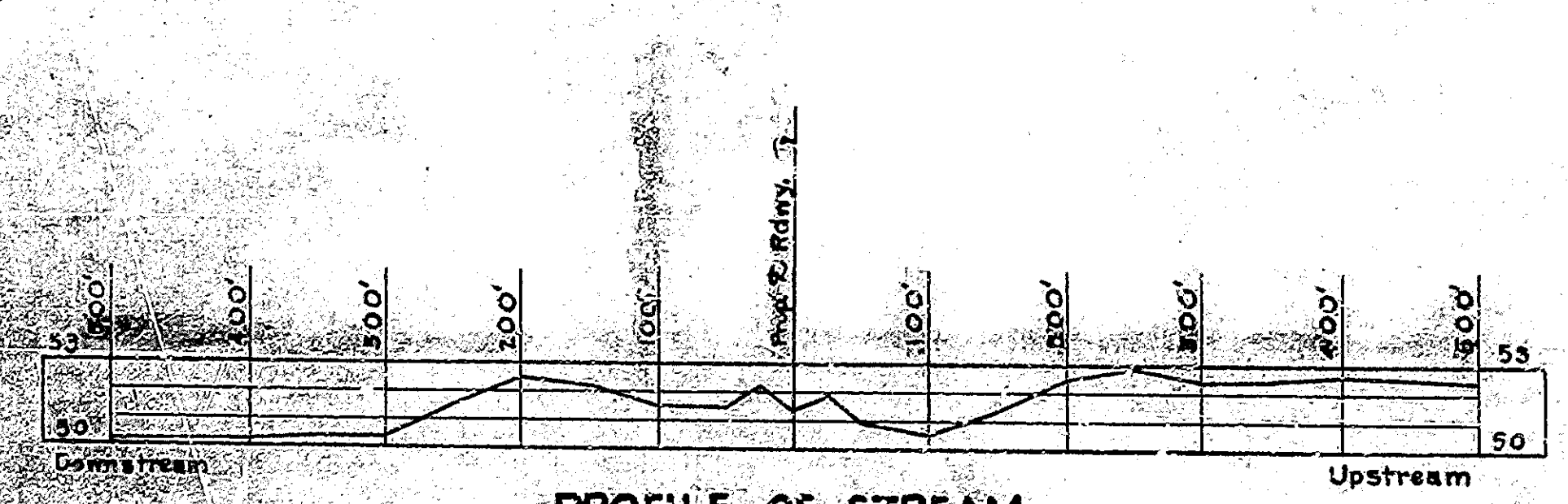
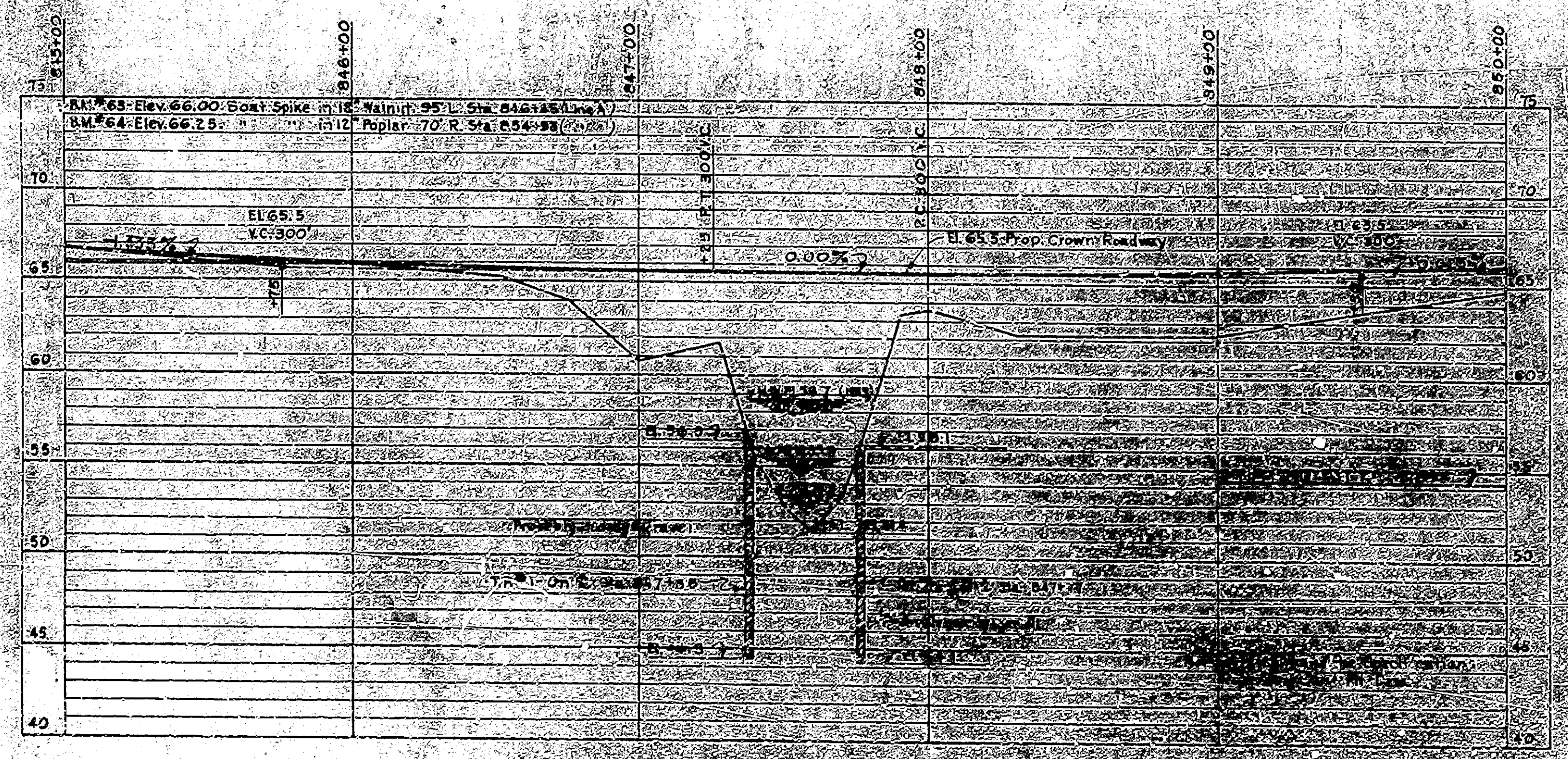
B.M. #62 - E1.66.86 - 6.5 in 12" Apple 15R Sta 835+70
 B.M. #63 - E1.68.00 - 6.5 in 12" Walnut 95L Sta 846+45
 B.M. #64 - E1.66.25 - 6.5 in 12" Poplar 70R Sta 854+95

PLAN & PROFILE
 BR. CONT. NO. 1522
 327-D-1963
 March 29, 1937



(24 I Beams - 6" x 12.5" x 11'-1")
(5 Built-up Beams - 18" x 5" x 1/4" x 14'-0")
Clear Rdwy. 11'-8"

NOTE: GRADING HAS BEEN COMPLETED ON LINE 'B' BETWEEN STA. 845+00 AND STA. 855+00 WITH EXCEPTION OF SHORT GAP @ PIGEON RIVER. GRAVEL SURFACE HAS ALSO BEEN PLACED ON LINE 'B' WITH EXCEPTION STA. 847+00 TO STA. 852+00.



LAYOUT
REINFORCED CONCRETE BRIDGE
1 SPAN @ 45'-0" SK. 15' R. 28'-0" ROADWAY
OVER PIGEON RIVER ON STATE ROAD 37200

STATE HIGHWAY COMMISSION OF INDIANA
STUBEN COUNTY

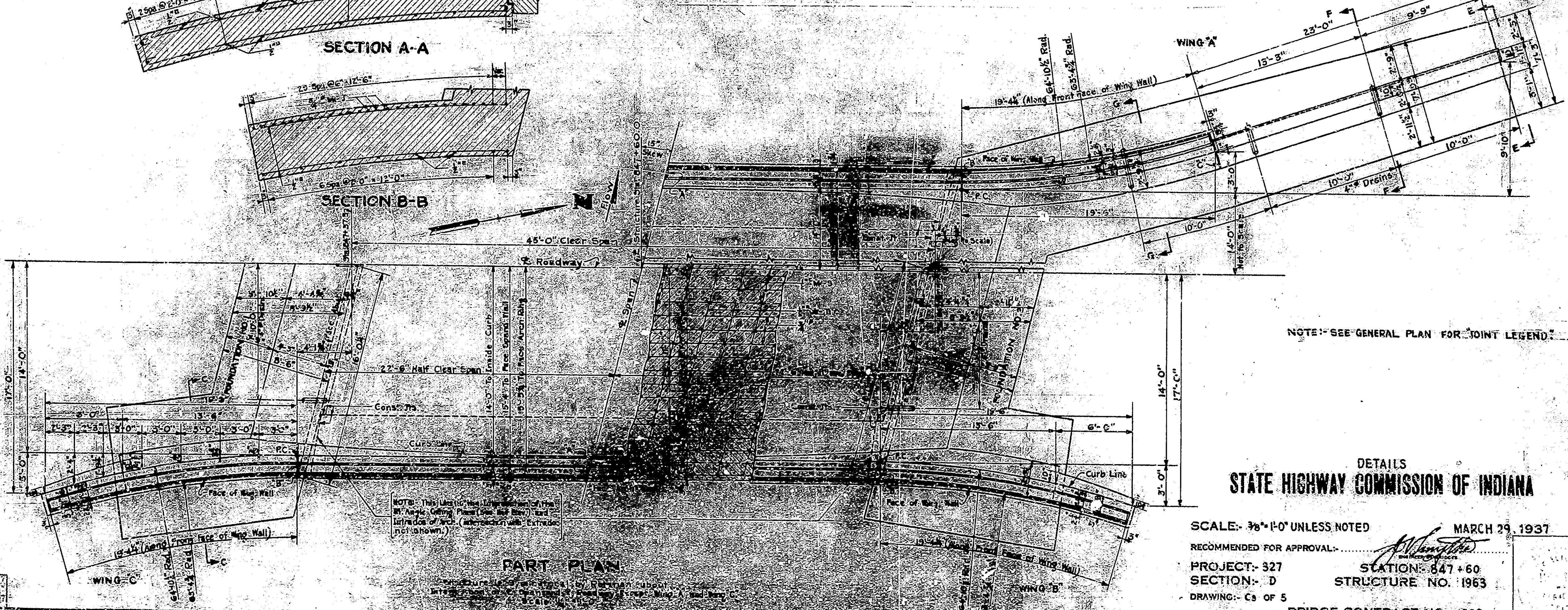
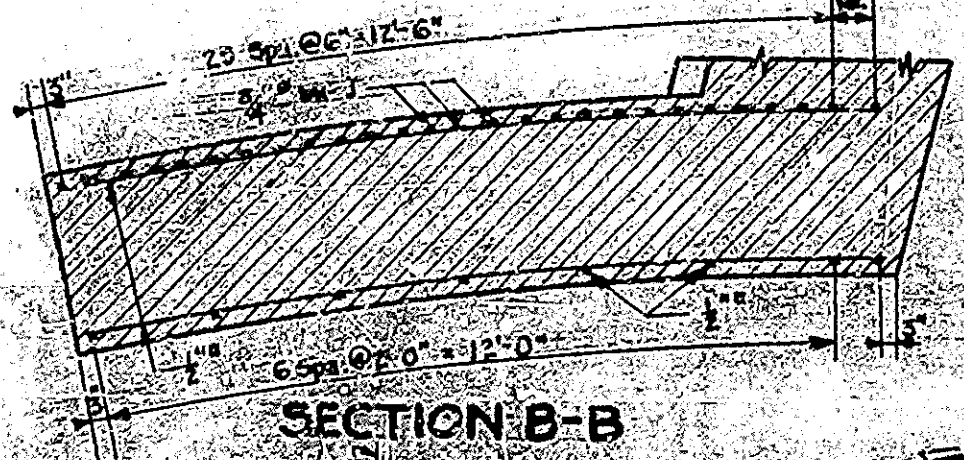
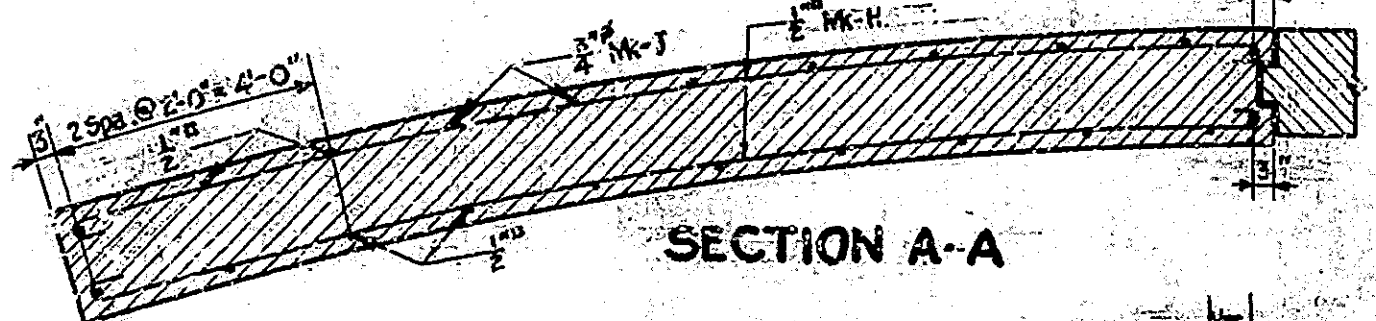
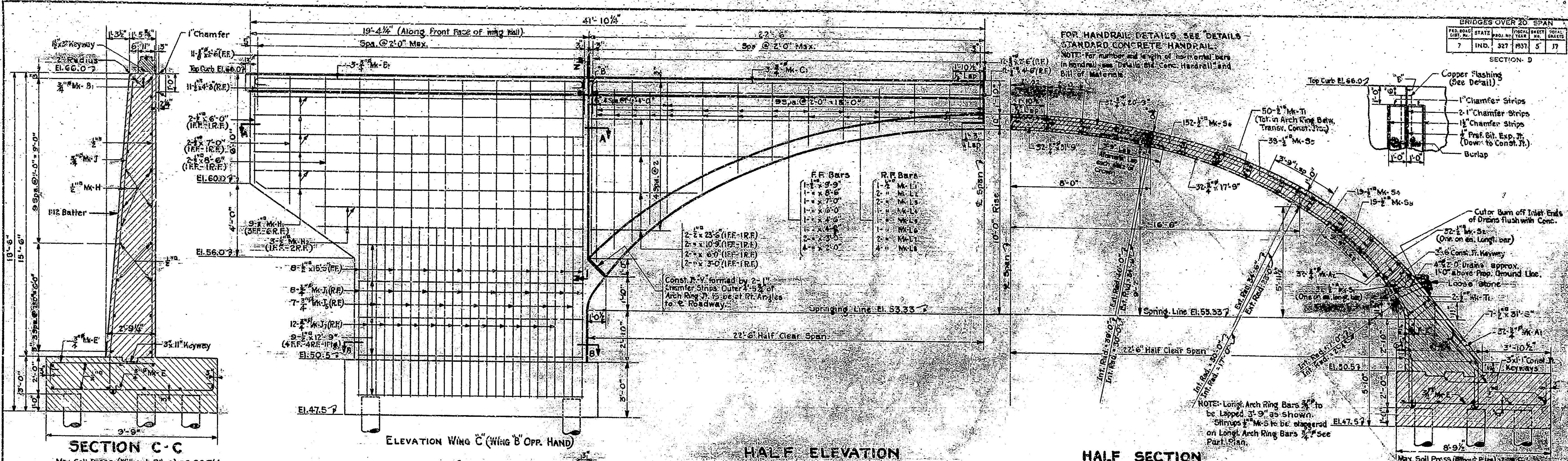
SCALE - AS NOTED MARCH 29, 1937
RECOMMENDED FOR APPROVAL: *[Signature]*

PROJECT - 327 STATION - 847+60
SECTION - D STRUCTURE NO. 1963
DRAWING - 01 OF 3 BRIDGE CONTRACT NO. 4522

NA 1136 111 NA 36
M.C. L.D. 31 311 477

FED. ROAD DIST. NO.	STATE	PROJ. NO.	YEAR	SHEET NO.	TOTAL SHEETS
7	IND.	327	1937	5	17

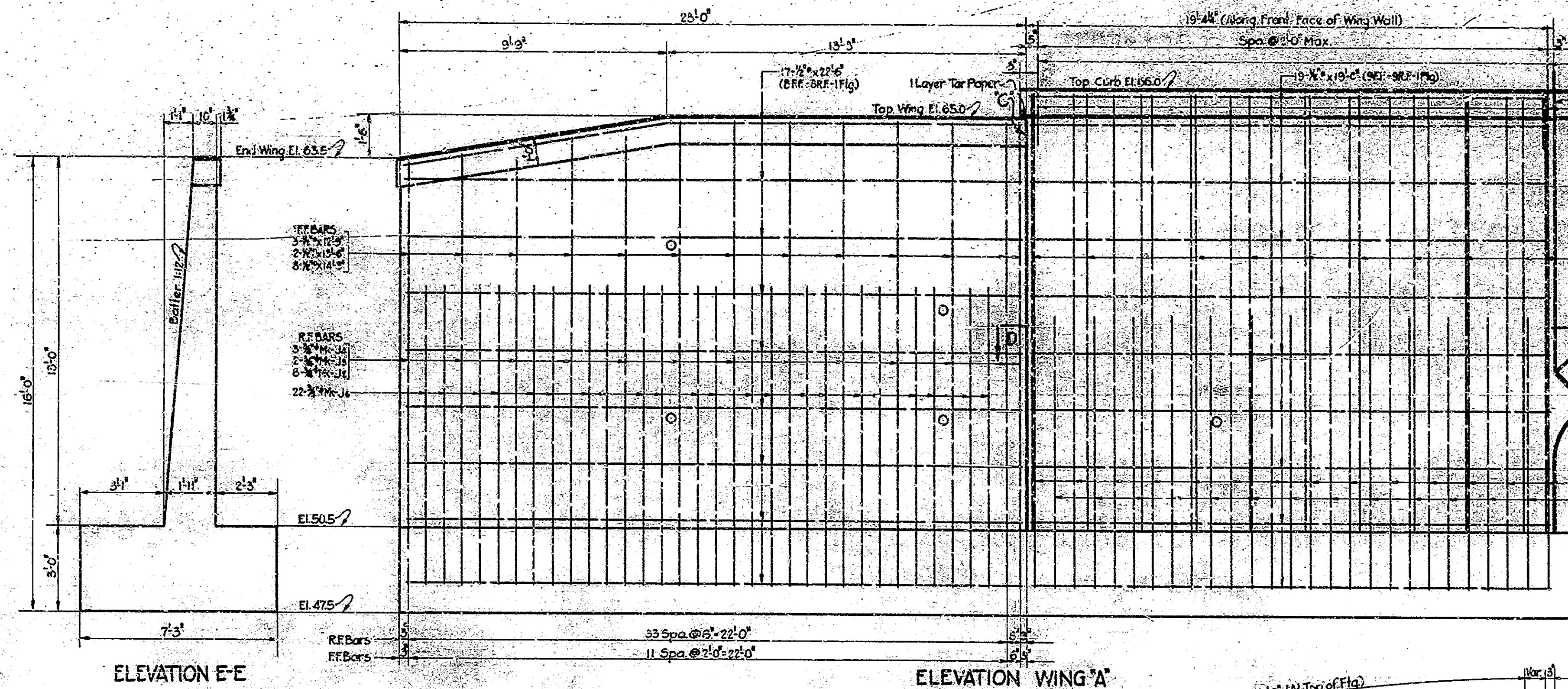
SECTION D



STATE HIGHWAY COMMISSION OF INDIANA

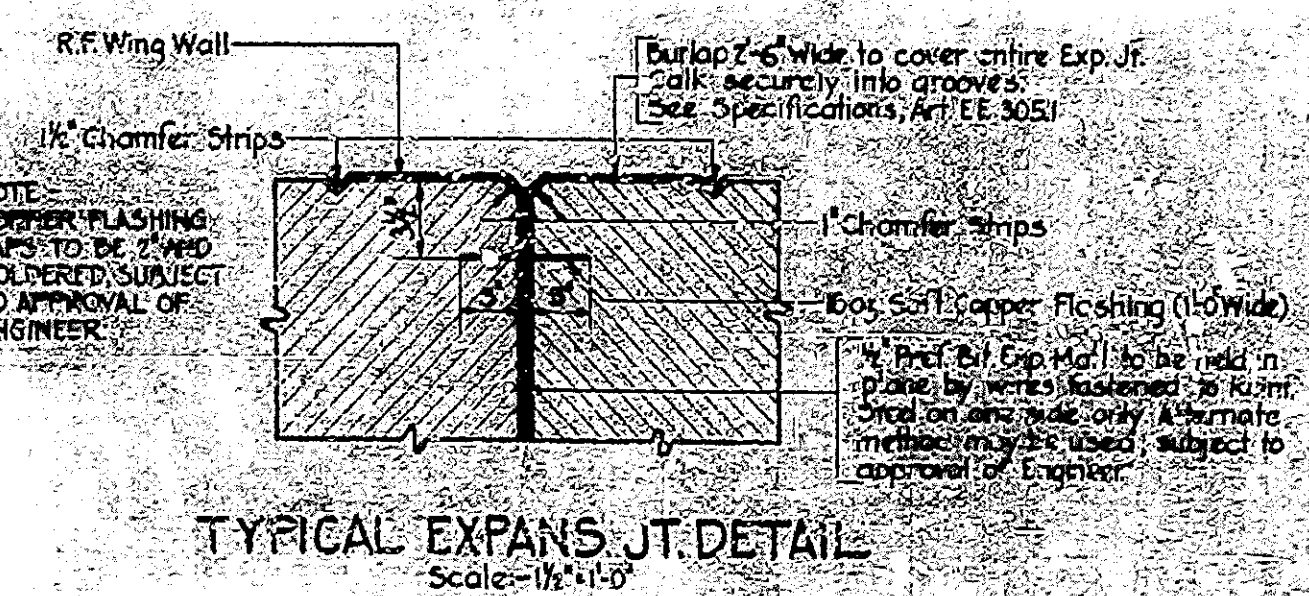
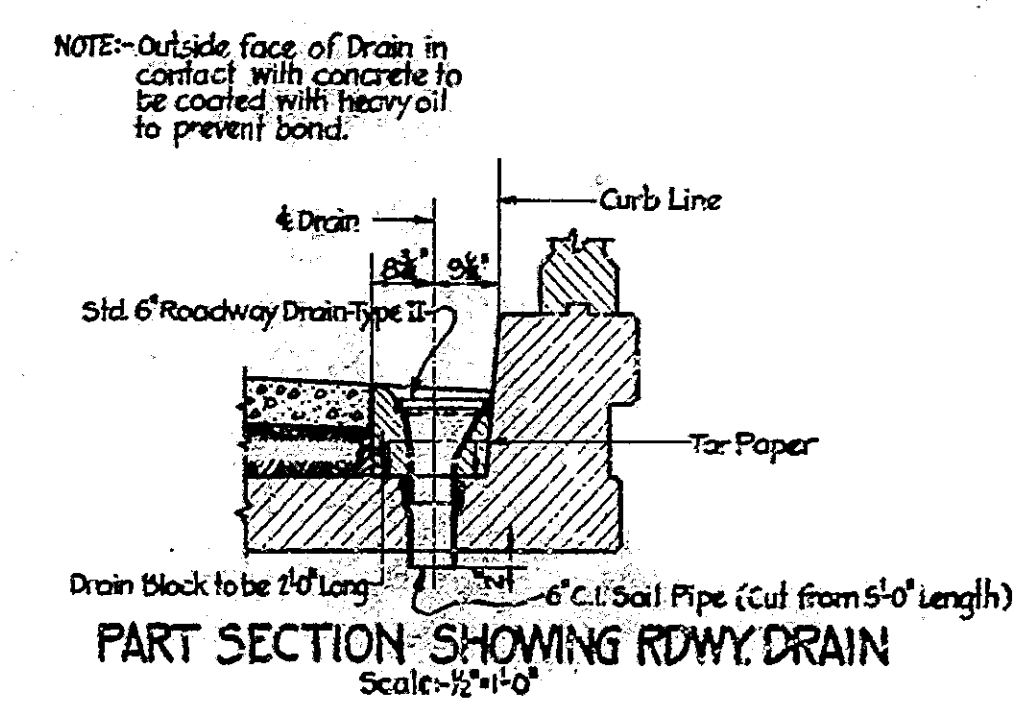
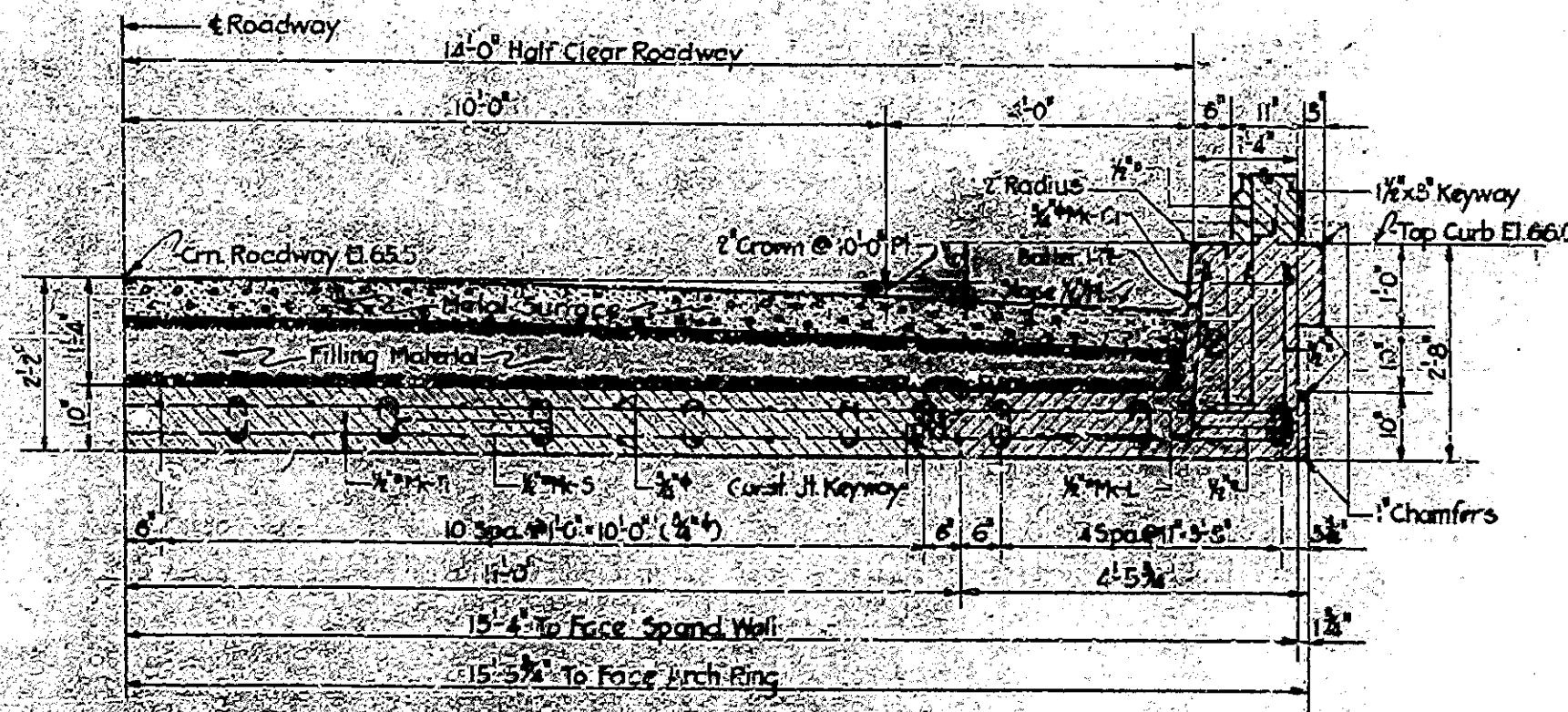
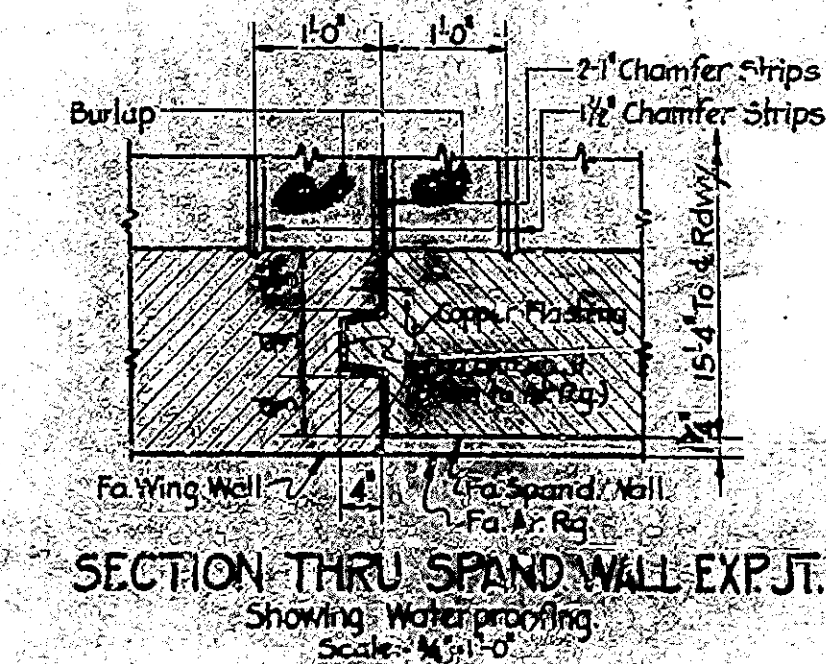
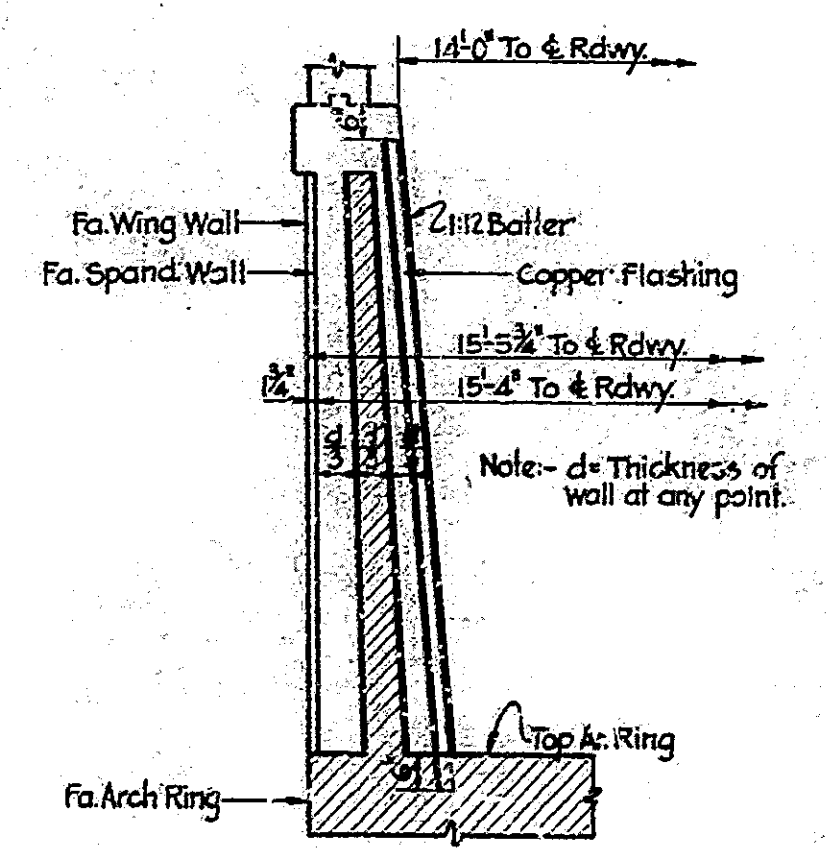
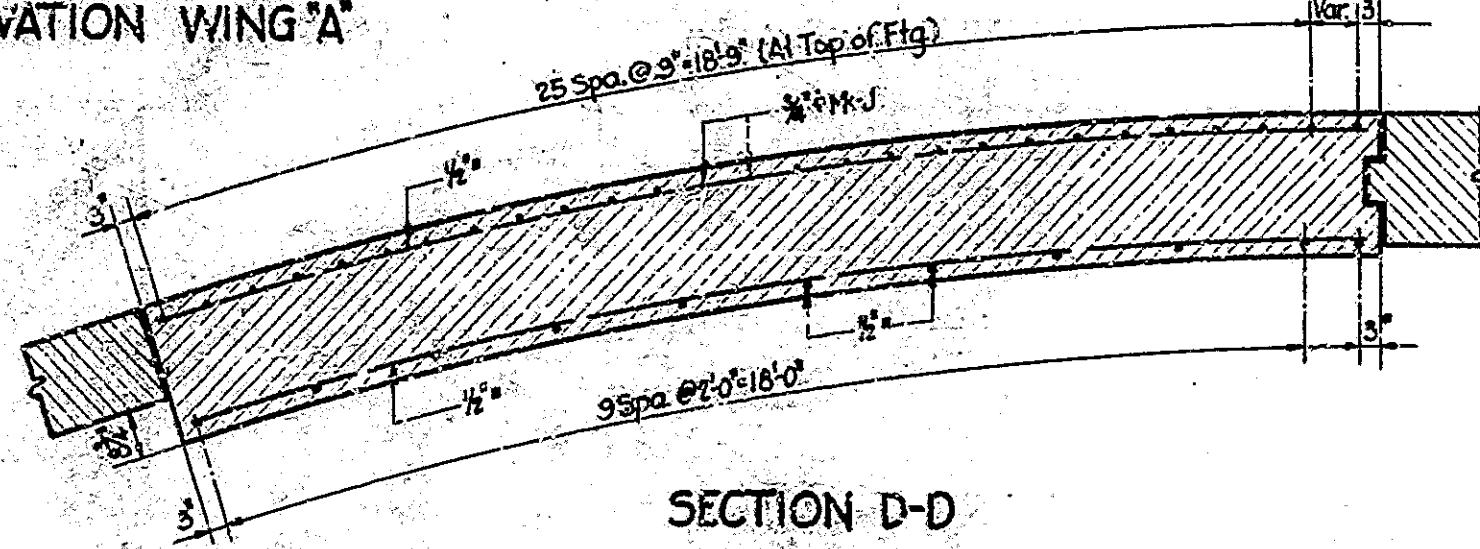
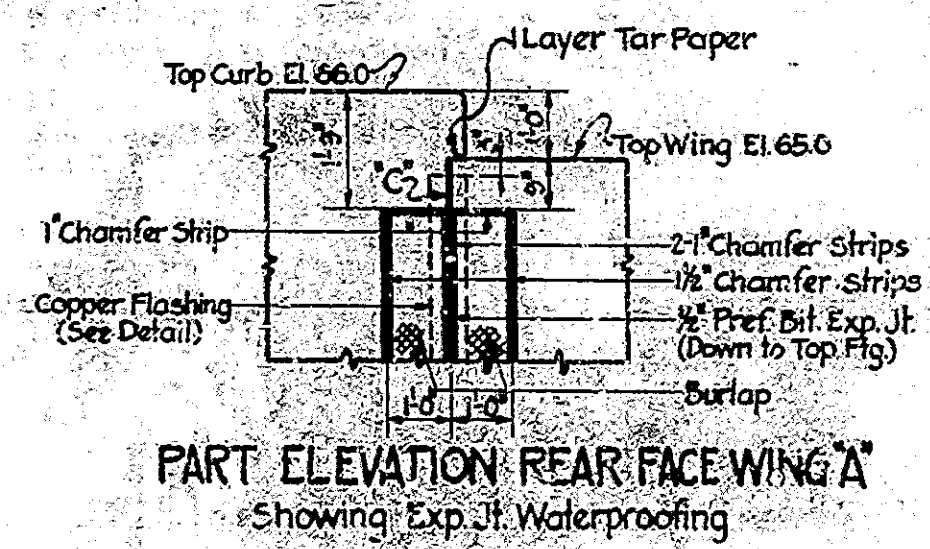
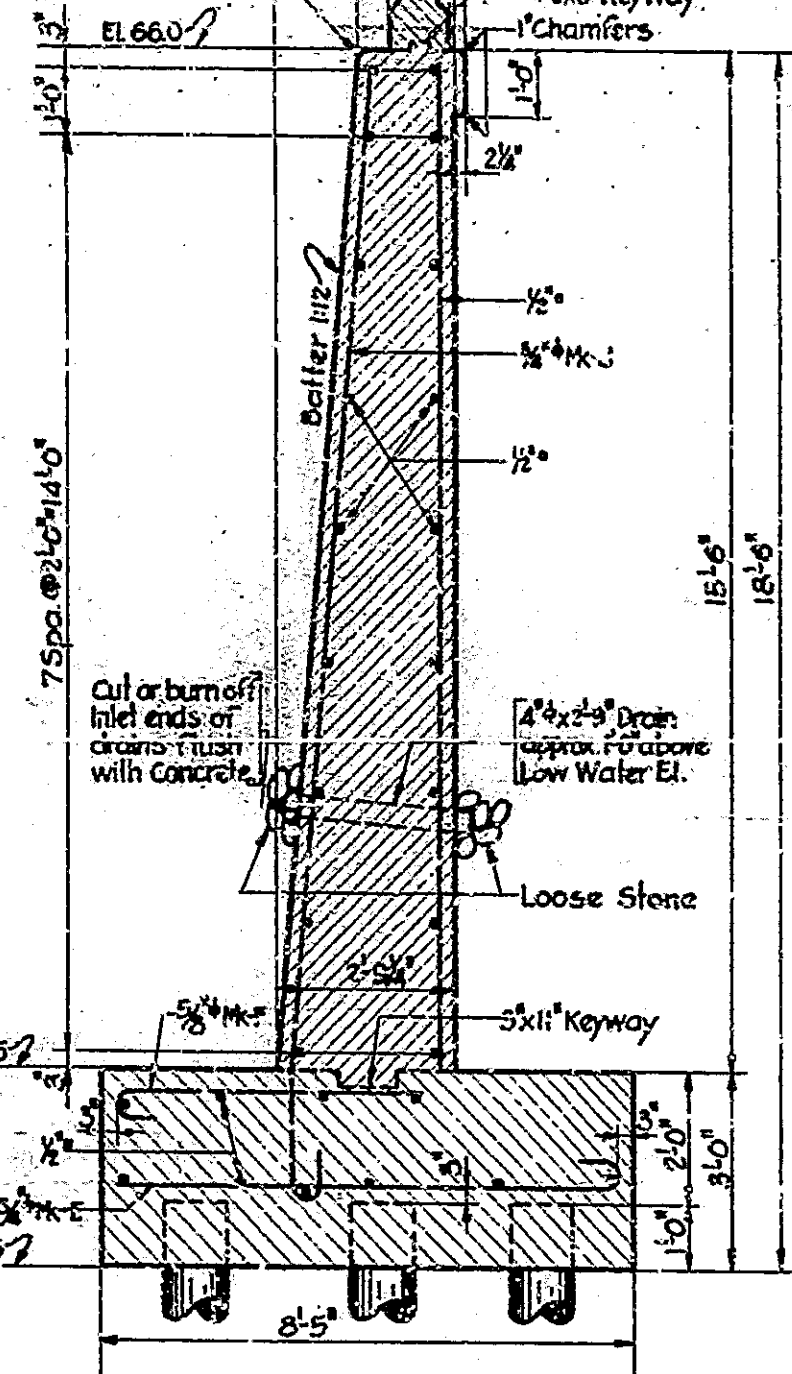
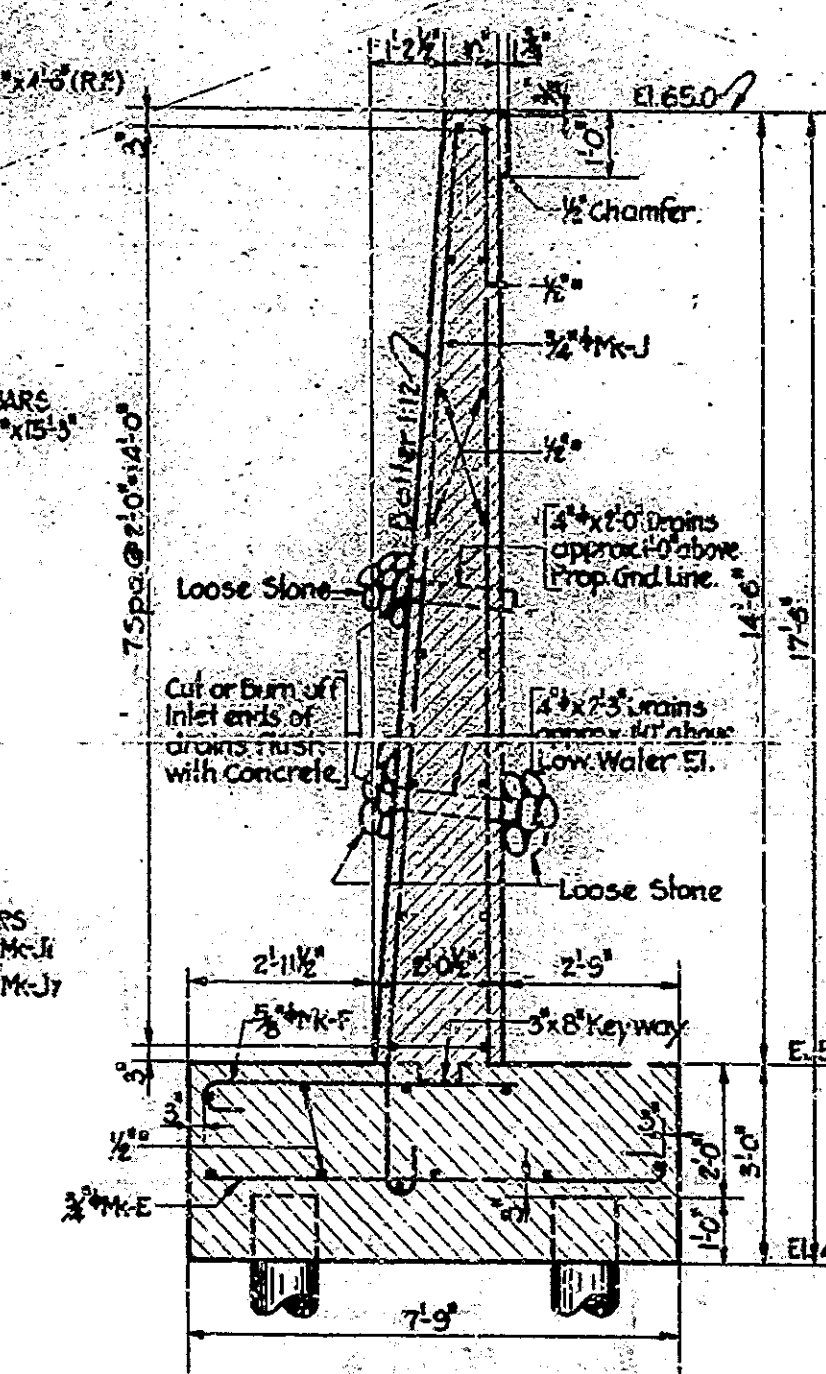
SCALE: 3/8" = 1'-0" UNLESS NOTED
 RECOMMENDED FOR APPROVAL: *[Signature]*
 PROJECT: 327 STATION: 847+60
 SECTION: D STRUCTURE NO. 1963
 DRAWING: C-5 OF 5 BRIDGE CONTRACT NO. 1522

DESIGNED BY: M. B. S. 1-2-37, E. L. S. 1-2-37
 DRAWN BY: M. B. S. 2-18-37, E. L. S. 2-18-37
 TRACED BY: M. B. S. 3-20-37, E. L. S. 3-20-37



FOR HANDRAIL DETAILS SEE DETAILS STANDARD CONCRETE HANDRAIL. Note: For number and length of horizontal bars in handrail, see Details Standard concrete Handrail and Bill of Materials.

FILE NO.	STATE	PROJECT NO.	DATE	SCALE	REVISION
7	IND.	327	1937	1/4" = 1'-0"	1



STATE HIGHWAY COMMISSION OF INDIA

SCALE: 3/8" = 1'-0" UNLESS NOTED
 RECOMMENDED FOR APPROVAL: [Signature]
 PROJECT: 327 STATION: 84+7.60
 SECTION: D STRUCTURE NO. 1963
 DRAWING: C4 OF 5
 BRIDGE CONTRACT NO. 1522
 MARCH 29, 1937

DATE	BY	CHKD.	APP'D.
3-29-37	J.M.S.	J.M.S.	J.M.S.
3-29-37	J.M.S.	J.M.S.	J.M.S.
3-29-37	J.M.S.	J.M.S.	J.M.S.

BILL OF MATERIALS

BRIDGES OVER 20' SPAN	
FED. ROAD DIST. NO.	STATE
7	IND.
PROJ. NO.	227
SECTION	D
SHEET NO.	7
TOTAL SHEETS	17

REINFORCING STEEL				REINFORCING STEEL			
MARK	SIZE	LENGTH	WEIGHT	MARK	SIZE	LENGTH	WEIGHT
1	1/2"	10'-0"	1.10	1	1/2"	10'-0"	1.10
2	3/4"	10'-0"	1.65	2	3/4"	10'-0"	1.65
3	1"	10'-0"	2.20	3	1"	10'-0"	2.20
4	1 1/4"	10'-0"	3.30	4	1 1/4"	10'-0"	3.30
5	1 1/2"	10'-0"	3.90	5	1 1/2"	10'-0"	3.90
6	2"	10'-0"	5.10	6	2"	10'-0"	5.10
7	2 1/2"	10'-0"	6.40	7	2 1/2"	10'-0"	6.40
8	3"	10'-0"	7.70	8	3"	10'-0"	7.70
9	3 1/2"	10'-0"	8.90	9	3 1/2"	10'-0"	8.90
10	4"	10'-0"	10.10	10	4"	10'-0"	10.10
11	4 1/2"	10'-0"	11.30	11	4 1/2"	10'-0"	11.30
12	5"	10'-0"	12.50	12	5"	10'-0"	12.50
13	5 1/2"	10'-0"	13.70	13	5 1/2"	10'-0"	13.70
14	6"	10'-0"	14.90	14	6"	10'-0"	14.90
15	6 1/2"	10'-0"	16.10	15	6 1/2"	10'-0"	16.10
16	7"	10'-0"	17.30	16	7"	10'-0"	17.30
17	7 1/2"	10'-0"	18.50	17	7 1/2"	10'-0"	18.50
18	8"	10'-0"	19.70	18	8"	10'-0"	19.70
19	8 1/2"	10'-0"	20.90	19	8 1/2"	10'-0"	20.90
20	9"	10'-0"	22.10	20	9"	10'-0"	22.10
21	9 1/2"	10'-0"	23.30	21	9 1/2"	10'-0"	23.30
22	10"	10'-0"	24.50	22	10"	10'-0"	24.50
23	10 1/2"	10'-0"	25.70	23	10 1/2"	10'-0"	25.70
24	11"	10'-0"	26.90	24	11"	10'-0"	26.90
25	11 1/2"	10'-0"	28.10	25	11 1/2"	10'-0"	28.10
26	12"	10'-0"	29.30	26	12"	10'-0"	29.30
27	12 1/2"	10'-0"	30.50	27	12 1/2"	10'-0"	30.50
28	13"	10'-0"	31.70	28	13"	10'-0"	31.70
29	13 1/2"	10'-0"	32.90	29	13 1/2"	10'-0"	32.90
30	14"	10'-0"	34.10	30	14"	10'-0"	34.10
31	14 1/2"	10'-0"	35.30	31	14 1/2"	10'-0"	35.30
32	15"	10'-0"	36.50	32	15"	10'-0"	36.50
33	15 1/2"	10'-0"	37.70	33	15 1/2"	10'-0"	37.70
34	16"	10'-0"	38.90	34	16"	10'-0"	38.90
35	16 1/2"	10'-0"	40.10	35	16 1/2"	10'-0"	40.10
36	17"	10'-0"	41.30	36	17"	10'-0"	41.30
37	17 1/2"	10'-0"	42.50	37	17 1/2"	10'-0"	42.50
38	18"	10'-0"	43.70	38	18"	10'-0"	43.70
39	18 1/2"	10'-0"	44.90	39	18 1/2"	10'-0"	44.90
40	19"	10'-0"	46.10	40	19"	10'-0"	46.10
41	19 1/2"	10'-0"	47.30	41	19 1/2"	10'-0"	47.30
42	20"	10'-0"	48.50	42	20"	10'-0"	48.50
43	20 1/2"	10'-0"	49.70	43	20 1/2"	10'-0"	49.70
44	21"	10'-0"	50.90	44	21"	10'-0"	50.90
45	21 1/2"	10'-0"	52.10	45	21 1/2"	10'-0"	52.10
46	22"	10'-0"	53.30	46	22"	10'-0"	53.30
47	22 1/2"	10'-0"	54.50	47	22 1/2"	10'-0"	54.50
48	23"	10'-0"	55.70	48	23"	10'-0"	55.70
49	23 1/2"	10'-0"	56.90	49	23 1/2"	10'-0"	56.90
50	24"	10'-0"	58.10	50	24"	10'-0"	58.10
51	24 1/2"	10'-0"	59.30	51	24 1/2"	10'-0"	59.30
52	25"	10'-0"	60.50	52	25"	10'-0"	60.50
53	25 1/2"	10'-0"	61.70	53	25 1/2"	10'-0"	61.70
54	26"	10'-0"	62.90	54	26"	10'-0"	62.90
55	26 1/2"	10'-0"	64.10	55	26 1/2"	10'-0"	64.10
56	27"	10'-0"	65.30	56	27"	10'-0"	65.30
57	27 1/2"	10'-0"	66.50	57	27 1/2"	10'-0"	66.50
58	28"	10'-0"	67.70	58	28"	10'-0"	67.70
59	28 1/2"	10'-0"	68.90	59	28 1/2"	10'-0"	68.90
60	29"	10'-0"	70.10	60	29"	10'-0"	70.10
61	29 1/2"	10'-0"	71.30	61	29 1/2"	10'-0"	71.30
62	30"	10'-0"	72.50	62	30"	10'-0"	72.50
63	30 1/2"	10'-0"	73.70	63	30 1/2"	10'-0"	73.70
64	31"	10'-0"	74.90	64	31"	10'-0"	74.90
65	31 1/2"	10'-0"	76.10	65	31 1/2"	10'-0"	76.10
66	32"	10'-0"	77.30	66	32"	10'-0"	77.30
67	32 1/2"	10'-0"	78.50	67	32 1/2"	10'-0"	78.50
68	33"	10'-0"	79.70	68	33"	10'-0"	79.70
69	33 1/2"	10'-0"	80.90	69	33 1/2"	10'-0"	80.90
70	34"	10'-0"	82.10	70	34"	10'-0"	82.10
71	34 1/2"	10'-0"	83.30	71	34 1/2"	10'-0"	83.30
72	35"	10'-0"	84.50	72	35"	10'-0"	84.50
73	35 1/2"	10'-0"	85.70	73	35 1/2"	10'-0"	85.70
74	36"	10'-0"	86.90	74	36"	10'-0"	86.90
75	36 1/2"	10'-0"	88.10	75	36 1/2"	10'-0"	88.10
76	37"	10'-0"	89.30	76	37"	10'-0"	89.30
77	37 1/2"	10'-0"	90.50	77	37 1/2"	10'-0"	90.50
78	38"	10'-0"	91.70	78	38"	10'-0"	91.70
79	38 1/2"	10'-0"	92.90	79	38 1/2"	10'-0"	92.90
80	39"	10'-0"	94.10	80	39"	10'-0"	94.10
81	39 1/2"	10'-0"	95.30	81	39 1/2"	10'-0"	95.30
82	40"	10'-0"	96.50	82	40"	10'-0"	96.50
83	40 1/2"	10'-0"	97.70	83	40 1/2"	10'-0"	97.70
84	41"	10'-0"	98.90	84	41"	10'-0"	98.90
85	41 1/2"	10'-0"	100.10	85	41 1/2"	10'-0"	100.10
86	42"	10'-0"	101.30	86	42"	10'-0"	101.30
87	42 1/2"	10'-0"	102.50	87	42 1/2"	10'-0"	102.50
88	43"	10'-0"	103.70	88	43"	10'-0"	103.70
89	43 1/2"	10'-0"	104.90	89	43 1/2"	10'-0"	104.90
90	44"	10'-0"	106.10	90	44"	10'-0"	106.10
91	44 1/2"	10'-0"	107.30	91	44 1/2"	10'-0"	107.30
92	45"	10'-0"	108.50	92	45"	10'-0"	108.50
93	45 1/2"	10'-0"	109.70	93	45 1/2"	10'-0"	109.70
94	46"	10'-0"	110.90	94	46"	10'-0"	110.90
95	46 1/2"	10'-0"	112.10	95	46 1/2"	10'-0"	112.10
96	47"	10'-0"	113.30	96	47"	10'-0"	113.30
97	47 1/2"	10'-0"	114.50	97	47 1/2"	10'-0"	114.50
98	48"	10'-0"	115.70	98	48"	10'-0"	115.70
99	48 1/2"	10'-0"	116.90	99	48 1/2"	10'-0"	116.90
100	49"	10'-0"	118.10	100	49"	10'-0"	118.10
101	49 1/2"	10'-0"	119.30	101	49 1/2"	10'-0"	119.30
102	50"	10'-0"	120.50	102	50"	10'-0"	120.50
103	50 1/2"	10'-0"	121.70	103	50 1/2"	10'-0"	121.70
104	51"	10'-0"	122.90	104	51"	10'-0"	122.90
105	51 1/2"	10'-0"	124.10	105	51 1/2"	10'-0"	124.10
106	52"	10'-0"	125.30	106	52"	10'-0"	125.30
107	52 1/2"	10'-0"	126.50	107	52 1/2"	10'-0"	126.50
108	53"	10'-0"	127.70	108	53"	10'-0"	127.70
109	53 1/2"	10'-0"	128.90	109	53 1/2"	10'-0"	128.90
110	54"	10'-0"	130.10	110	54"	10'-0"	130.10
111	54 1/2"	10'-0"	131.30	111	54 1/2"	10'-0"	131.30
112	55"	10'-0"	132.50	112	55"	10'-0"	132.50
113	55 1/2"	10'-0"	133.70	113	55 1/2"	10'-0"	133.70
114	56"	10'-0"	134.90	114	56"	10'-0"	134.90
115	56 1/2"	10'-0"	136.10	115	56 1/2"	10'-0"	136.10
116	57"	10'-0"	137.30	116	57"	10'-0"	137.30
117	57 1/2"	10'-0"	138.50	117	57 1/2"	10'-0"	138.50
118	58"	10'-0"	139.70	118	58"	10'-0"	139.70
119	58 1/2"	10'-0"	140.90	119	58 1/2"	10'-0"	140.90
120	59"	10'-0"	142.10	120	59"	10'-0"	142.10
121	59 1/2"	10'-0"	143.30	121	59 1/2"	10'-0"	143.30
122	60"	10'-0"	144.50	122	60"	10'-0"	144.50
123	60 1/2"	10'-0"	145.70	123	60 1/2"	10'-0"	145.70
124	61"	10'-0"	146.90	124	61"	10'-0"	146.90
125	61 1/2"	10'-0"	148.10	125	61 1/2"	10'-0"	148.10
126	62"	10'-0"	149.30	126	62"	10'-0"	149.30
127	62 1/2"	10'-0"	150.50	127	62 1/2"	10'-0"	150.50
128	63"	10'-0"	151.70	128	63"	10'-0"	151.70
129	63 1/2"	10'-0"	152.90	129	63 1/2"	10'-0"	152.90
130	64"	10'-0"	154.10	130	64"	10'-0"	154.10
131	64 1/2"	10'-0"	155.30	131	64 1/2"	10'-0"	155.30
132	65"	10'-0"	156.50	132	65"	10'-0"	156.50
133	65 1/2"	10'-0"	157.70	133	65 1/2"	10'-0"	157.70
134	66"	10'-0"	158.90	134	66"	10'-0"	158.90
135	66 1/2"	10'-0"	160.10	135	66 1/2"	10'-0"	160.10
136	67"	10'-0"	161.30	136	67"	10'-0"	161.30
137	67 1/2"	10'-0"	162.50	137	67 1/2"	10'-0"	162.50
138	68"	10'-0"	163.70	138	68"	10'-0"	163.70
139	68 1/2"	10'-0"	164.90	139	68 1/2"	10'-0"	164.90
140	69"	10'-0"	166.10	140			

