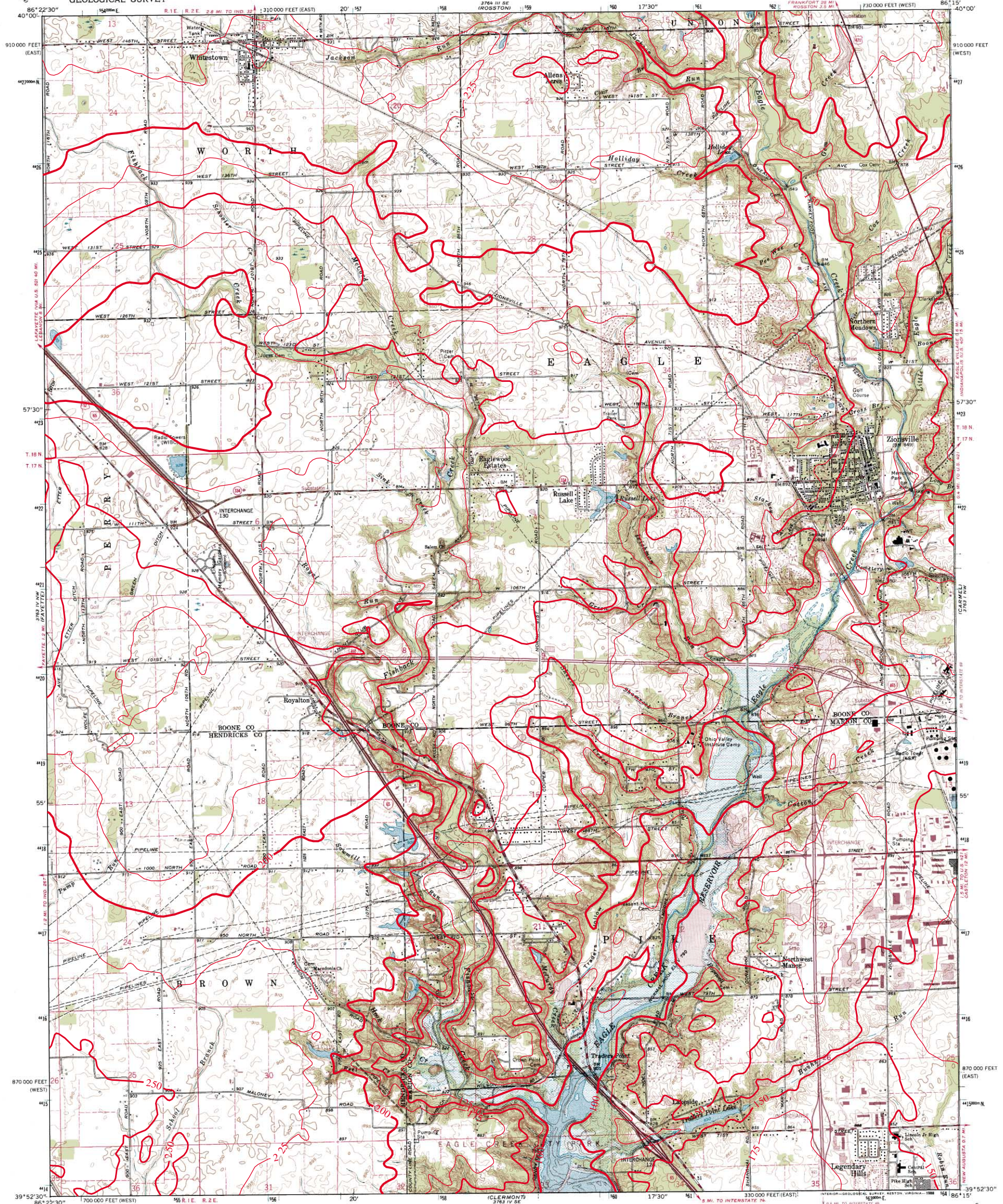


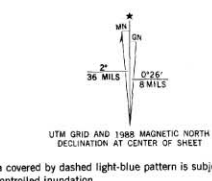
THICKNESS OF UNCONSOLIDATED DEPOSITS OF ZIONSVILLE QUADRANGLE, INDIANA

UNITED STATES
DEPARTMENT OF THE INTERIOR
GEOLOGICAL SURVEY

ZIONSVILLE QUADRANGLE
INDIANA
7.5 MINUTE SERIES (TOPOGRAPHIC)



Mapped, edited, and published by the Geological Survey
Revised in cooperation with State of Indiana
Department of Natural Resources
Control by USGS, NOS/NOAA, and Indiana Flood Control
and Water Resources Commission
Planimetry by photogrammetric methods from aerial photographs
taken 1952. Topography by planetable surveys 1953. Revised 1966
Polyconic projection. 1927 North American Datum
10,000-foot grid ticks based on Indiana coordinate system,
west and east zones
1000-meter Universal Transverse Mercator grid ticks,
zone 16, shown in blue
To place on the predicted North American Datum 1983
move the projection lines 1 meter south
as shown by dashed corner ticks



SCALE 1:24,000
CONTOUR INTERVAL 5 FEET
NATIONAL GEODETIC VERTICAL DATUM OF 1929

ROAD CLASSIFICATION
Heavy-duty ——— Light-duty ———
Medium-duty ——— Unimproved dirt ———
Interstate Route ——— U.S. Route ——— State Route ———

QUADRANGLE LOCATION
Fine red dashed lines indicate selected fence and field lines where
generally visible on aerial photographs. This information is unchecked
Revisions shown in purple and woodland compiled in cooperation
with State of Indiana agencies from aerial photographs
taken 1984 and other sources. This information not field checked
Map edited 1988

ZIONSVILLE, IND.
39086-H3-TF-024
1986
PHOTOREVISED 1988
DMA 3763 IV NE—SERIES V851

This map showing thickness of unconsolidated deposits was created by Glenn E. Grove, IDNR, Division of Water, Ground Water Section. The digital elevation grid of the bedrock surface was subtracted from the grid of the land surface and the resultant grid contoured in ArcInfo. The land surface elevation grid is from 1:24,000 scale digital hypsography by the U.S. Geological Survey, Reston, Virginia, 1999 and 2001. The bedrock surface elevation grid is from a digital map of the bedrock surface topography of Boone County. The bedrock surface contouring was done by Marvin B. Thompson, Ground Water Section, Division of Water, IDNR, 1999. The bedrock contouring in Marion County was modified from Fleming and others, 1993, at a scale of 1:24,000.

Unconsolidated thickness contour interval = 25 feet (shown in red).



Map generated by Glenn E. Grove
IDNR, Division of Water, Ground Water Section
October 28, 2002