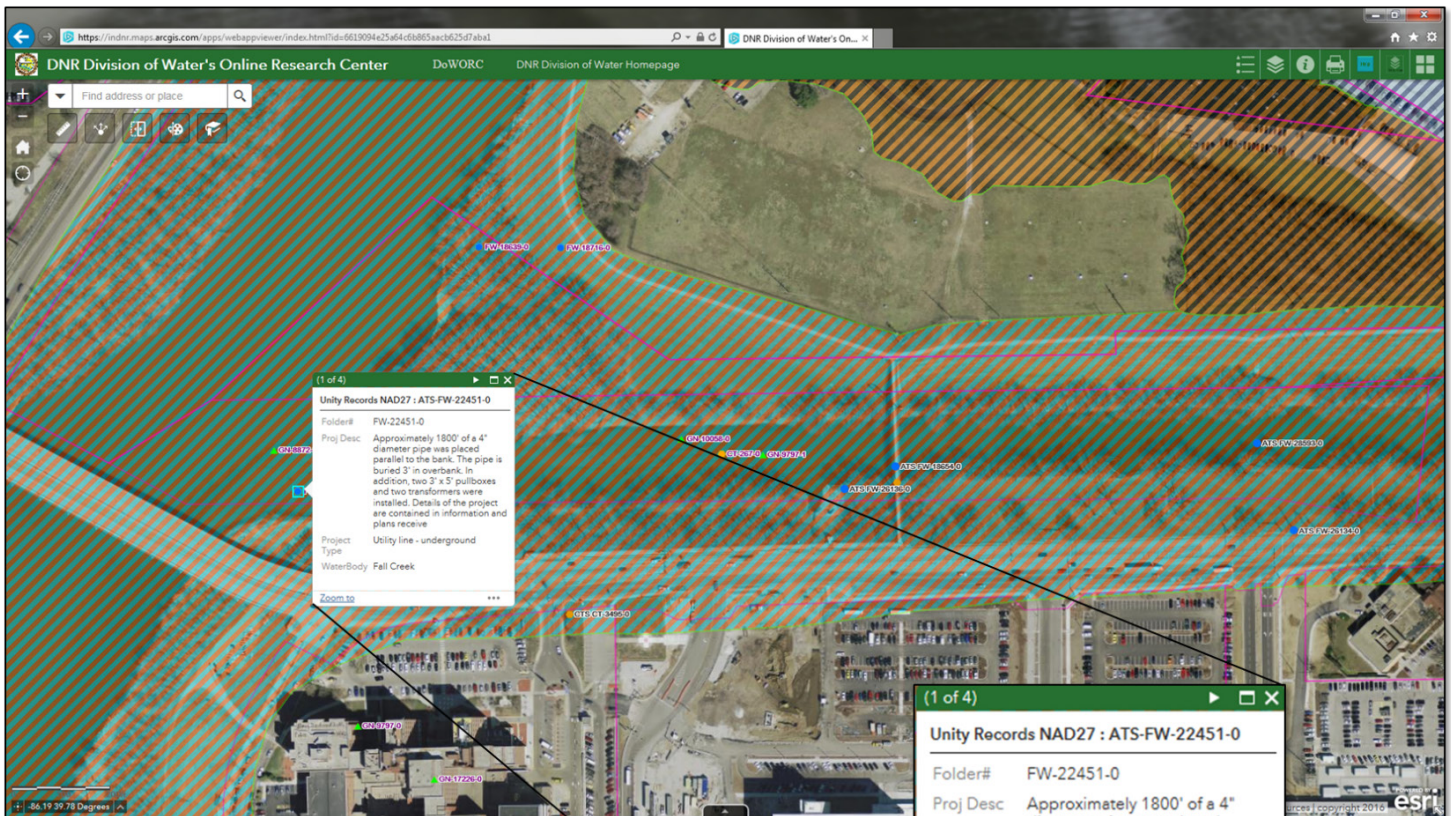


# Division of Water's Online Research Center

The Indiana Department of Natural Resources Division of Water has a new web-based mapping service. This service provides the general public access to geographical maps to locate and view data from records associated with programs administered by the Division of Water. Various other dataset layers including flood hazard maps, local floodplain administrator's contact information, and Hoggatt Drainage Area Maps. Stream Gage data can also be viewed.



ACCESS THE  
ONLINE RESEARCH CENTER AT:  
**ON.IN.GOV/DOWORC**

With the use of ESRI's ArcGIS-Online software, DoWORC has been developed by DNR to allow the general public access to data and the ability to easily view, locate, and search for information from Division of Water records. This includes permit applications, floodplain information requests (FARA), Early Coordination records, Dam records, Violation and Compliance records, and other regulatory correspondence. DoWORC interfaces with the Division of Water's database by the use of Universal Transverse Mercator (UTM) coordinates to display a data point on the map that references the location of the record. With a click of your mouse on a data point, DoWORC will retrieve and display a collection of helpful information from that record such as file number, water body, project or request description, base flood elevation, discharge value, action, mailed date, etc.

Information about these records can be accessed from our database at: <https://dowunity.dnr.in.gov>.