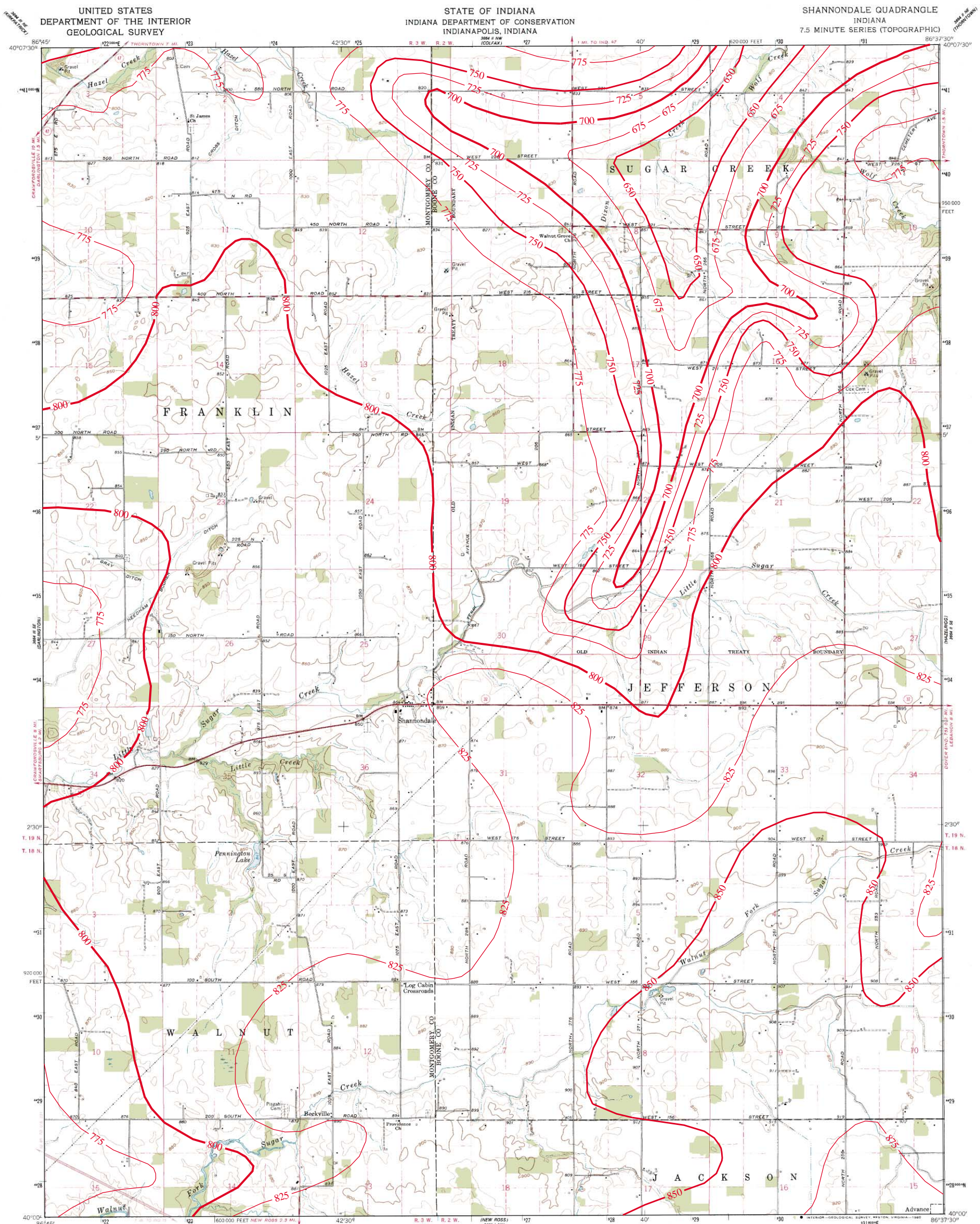
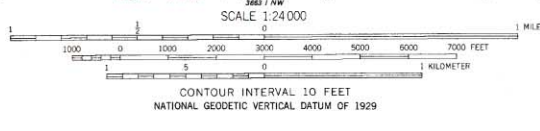


BEDROCK TOPOGRAPHY OF SHANNONDALE QUADRANGLE, INDIANA



Mapped, edited, and published by the Geological Survey
 Control by USGS and NOS/NOAA
 Topography by photogrammetric methods from aerial photographs taken 1958. Field checked 1961
 Polyconic projection. 10,000-foot grid based on Indiana coordinate system, west zone
 1000-meter Universal Transverse Mercator grid ticks, zone 16, shown in blue. 1927 North American Datum
 To place on the predicted North American Datum 1983 move the projection lines 1 meter south and 1 meter east as shown by dashed corner ticks
 Fine red dashed lines indicate selected fence and field lines where generally visible on aerial photographs. This information is unchecked
 Reference source is graphic compared to cooperative with State of Indiana agencies from aerial photographs taken 1977 and other source data. This information not field checked. Map edited 1990



ROAD CLASSIFICATION
 Heavy-duty ——— Light-duty ———
 Medium-duty ——— Unimproved dirt ———
 Interstate Route ——— State Route ———

THIS MAP COMPLIES WITH NATIONAL MAP ACCURACY STANDARDS
 FOR SALE BY U. S. GEOLOGICAL SURVEY, RESTON, VIRGINIA 22092
 AND INDIANA DEPARTMENT OF NATURAL RESOURCES, INDIANAPOLIS, INDIANA 46204
 A FOLDER DESCRIBING TOPOGRAPHIC MAPS AND SYMBOLS IS AVAILABLE ON REQUEST

SHANNONDALE, IND.
 N 4000—W 8637.5/7.5
 1961
 PHOTO REVISSED 1980
 DMA 3664 II SW—SERIES Y851



Bedrock surface map derived from water well records housed in IDNR/DOW, Ground Water Section, oil and gas well records housed in IDNR/DOG, and seismic data from the Indiana Geological Survey (IGS).
 Bedrock contouring by William C. Herring, Ground Water Section, Division of Water, IDNR, 2002.

Originally mapped at a scale of 1:24,000 on USGS topographic maps. Bedrock surface contour interval = 25 feet.

Map generated by Glenn E. Grove
 IDNR, Division of Water, Ground Water Section
 September 12, 2002