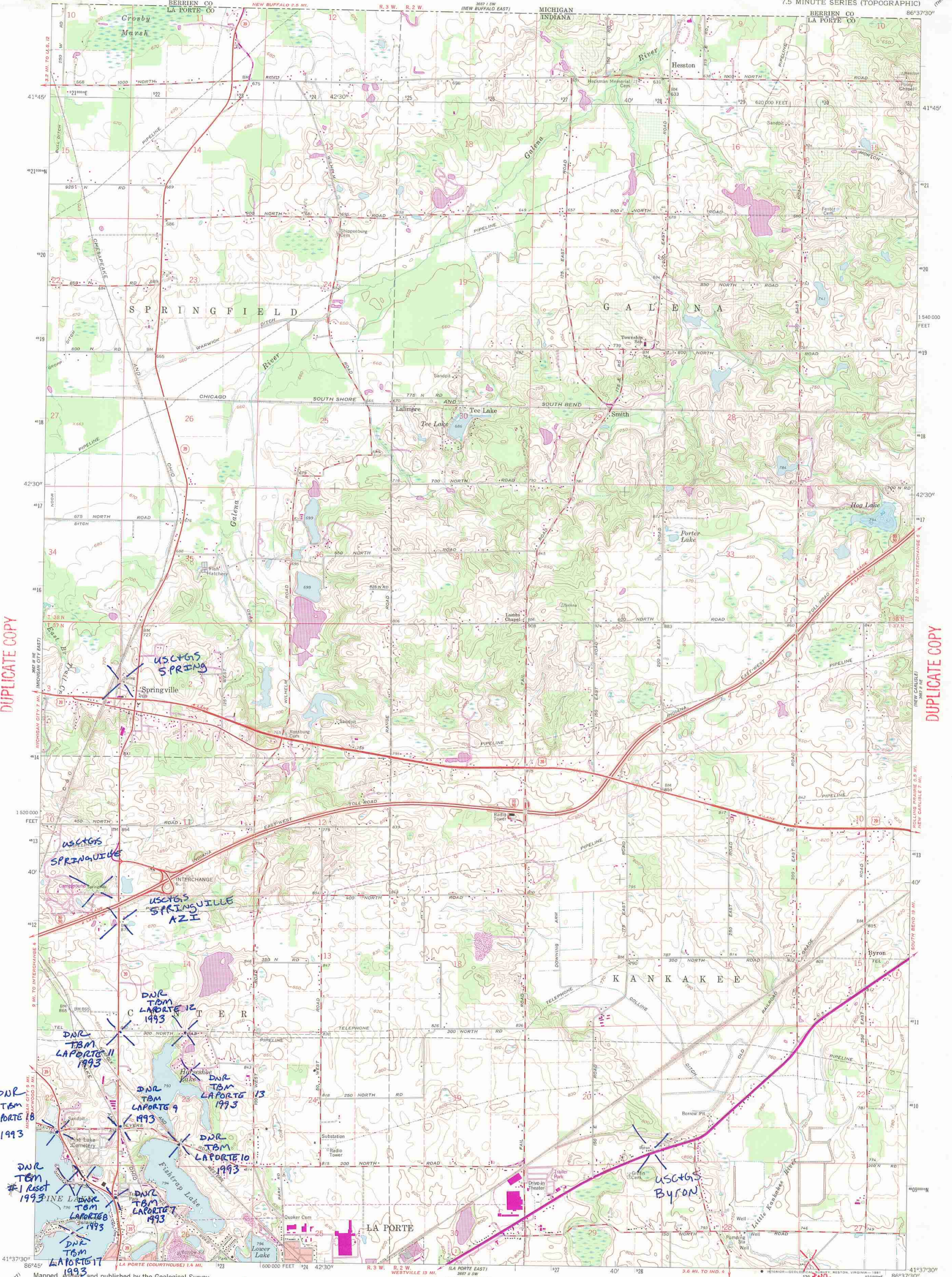


DUPLICATE COPY

DUPLICATE COPY

DUPLICATE COPY



DUPLICATE COPY

DUPLICATE COPY

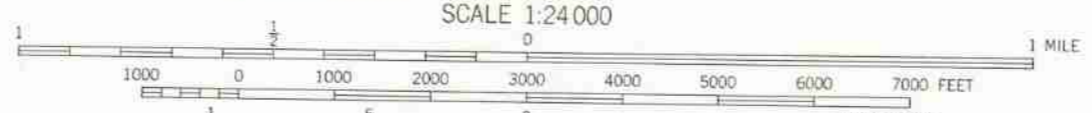
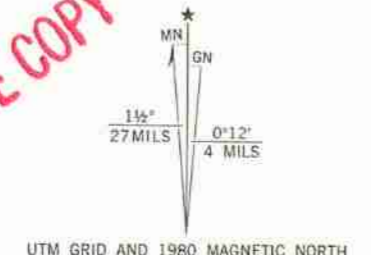
DUPLICATE COPY

DUPLICATE COPY

DUPLICATE COPY

DUPLICATE COPY

Maped, edited, and published by the Geological Survey
Control by USGS and NOS/NOAA
Depth curves and soundings compiled from USGS-Indiana
Department of Conservation lake charts
Topography by photogrammetric methods from aerial
photographs taken 1957. Field checked 1958
Polyconic projection. 10,000-foot grid based on
Indiana coordinate system, west zone
1000-meter Universal Transverse Mercator grid ticks,
zone 16, shown in blue. 1927 North American Datum
To place on the predicted North American Datum 1983
move the projection lines 1 meter north and
3 meters east as shown by dashed corner ticks
Fine red dashed lines indicate selected fence and field lines where
generally visible on aerial photographs. This information is unchecked
Red tint indicates areas in which only landmark buildings are shown



CONTOUR INTERVAL 10 FEET
NATIONAL GEODETIC VERTICAL DATUM OF 1929
SCALE 1:24 000



- Heavy-duty — Light-duty
- Medium-duty — Unimproved dirt
- Interstate Route U.S. Route State Route

THIS MAP COMPLIES WITH NATIONAL MAP ACCURACY STANDARDS
FOR SALE BY U.S. GEOLOGICAL SURVEY, DENVER, COLORADO 80225, OR RESTON, VIRGINIA 22092
AND INDIANA DEPARTMENT OF NATURAL RESOURCES, INDIANAPOLIS, INDIANA 46204
A FOLDER DESCRIBING TOPOGRAPHIC MAPS AND SYMBOLS IS AVAILABLE ON REQUEST

Revisions shown in purple compiled in cooperation with State of
Indiana agencies from aerial photographs taken 1977 and other
source data. This information not field checked. Map edited 1980

SPRINGVILLE, IND.
N4137.5-W8637.5/7.5

1958
PHOTOREVISED 1980
DMA 3667 II NW-SERIES V851