

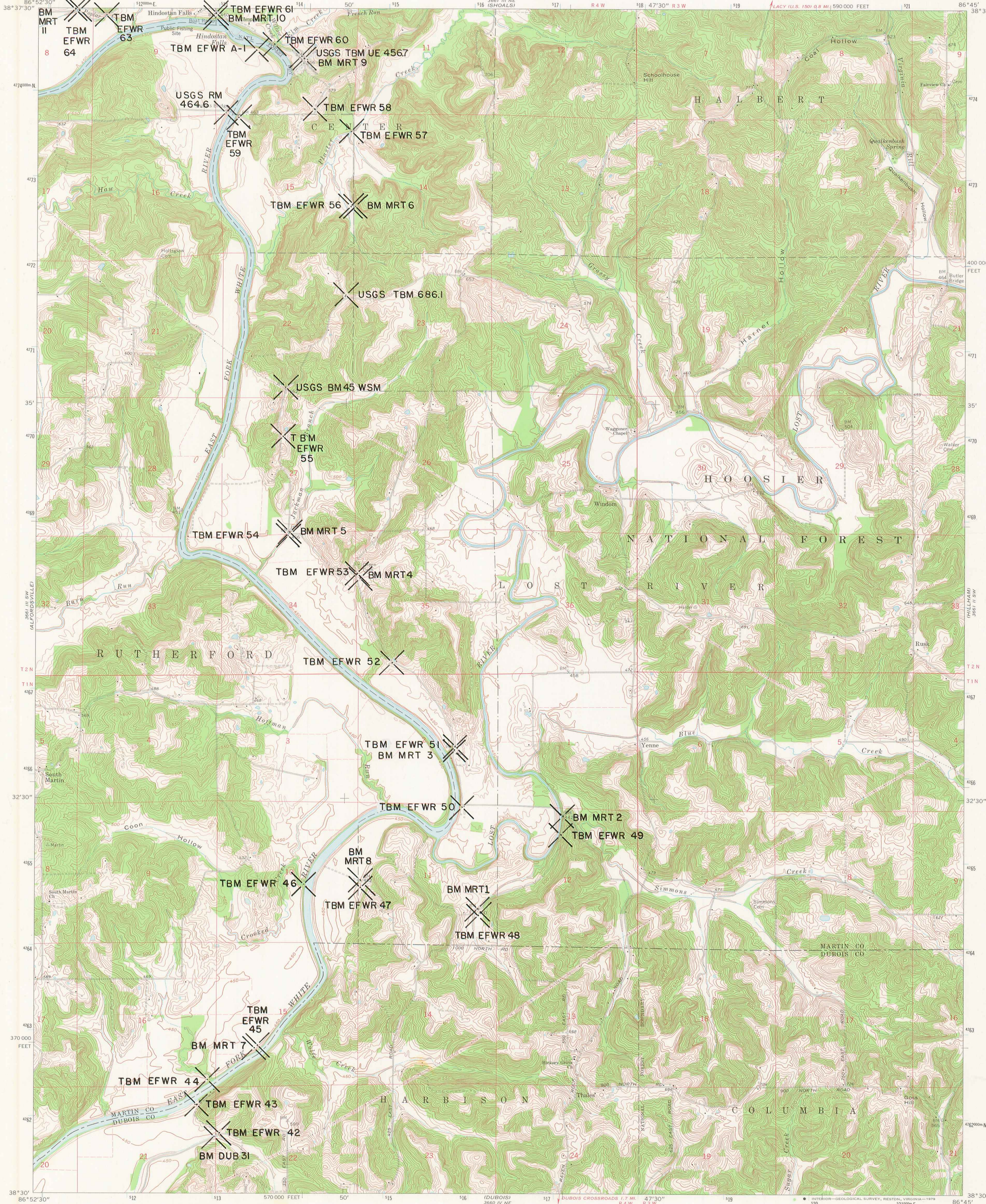
DUPLICATE COPY

DUPLICATE COPY

UNITED STATES
DEPARTMENT OF THE INTERIOR
GEOLOGICAL SURVEY

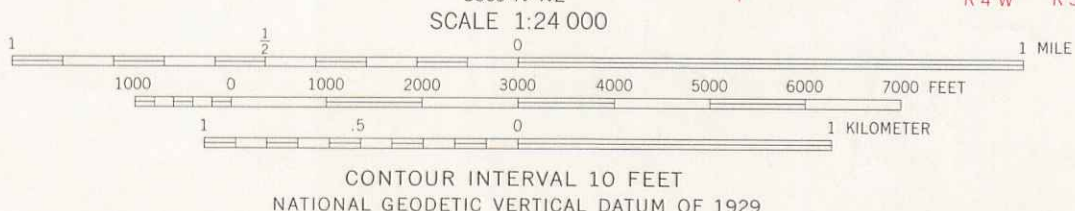
STATE OF INDIANA
DEPARTMENT OF NATURAL RESOURCES
INDIANAPOLIS, INDIANA

RUSK QUADRANGLE
INDIANA
7.5 MINUTE SERIES (TOPOGRAPHIC)



Mapped, edited, and published by the Geological Survey
Control by USGS, NOS/NOAA, USCE, and Indiana Flood
Control and Water Resources Commission
Topography by plane-table surveys 1931 and 1941 by the Geological
Survey and Corps of Engineers. Revised from aerial photographs
taken 1973. Field checked 1974. Map edited 1978
Polyconic projection. 1927 North American datum
10,000-foot grid ticks based on Indiana coordinate system, west zone
100-meter Universal Transverse Mercator grid ticks,
zone 16, shown in blue
Fine red dashed lines indicate selected fence and field lines where
generally visible on aerial photographs. This information is unchecked

DUPLICATE COPY



ROAD CLASSIFICATION
Primary highway, hard surface
Secondary highway, hard surface
Light-duty road, hard or improved surface
Unimproved road
Interstate Route
U. S. Route
State Route

THIS MAP COMPLIES WITH NATIONAL MAP ACCURACY STANDARDS
FOR SALE BY U. S. GEOLOGICAL SURVEY, RESTON, VIRGINIA 22092
AND INDIANA DEPARTMENT OF NATURAL RESOURCES, INDIANAPOLIS, INDIANA 46204
A FOLDER DESCRIBING TOPOGRAPHIC MAPS AND SYMBOLS IS AVAILABLE ON REQUEST



RUSK, INDIANA
N3830-W8645/7.5
1978
AMS 3661 III SE-SERIES W851