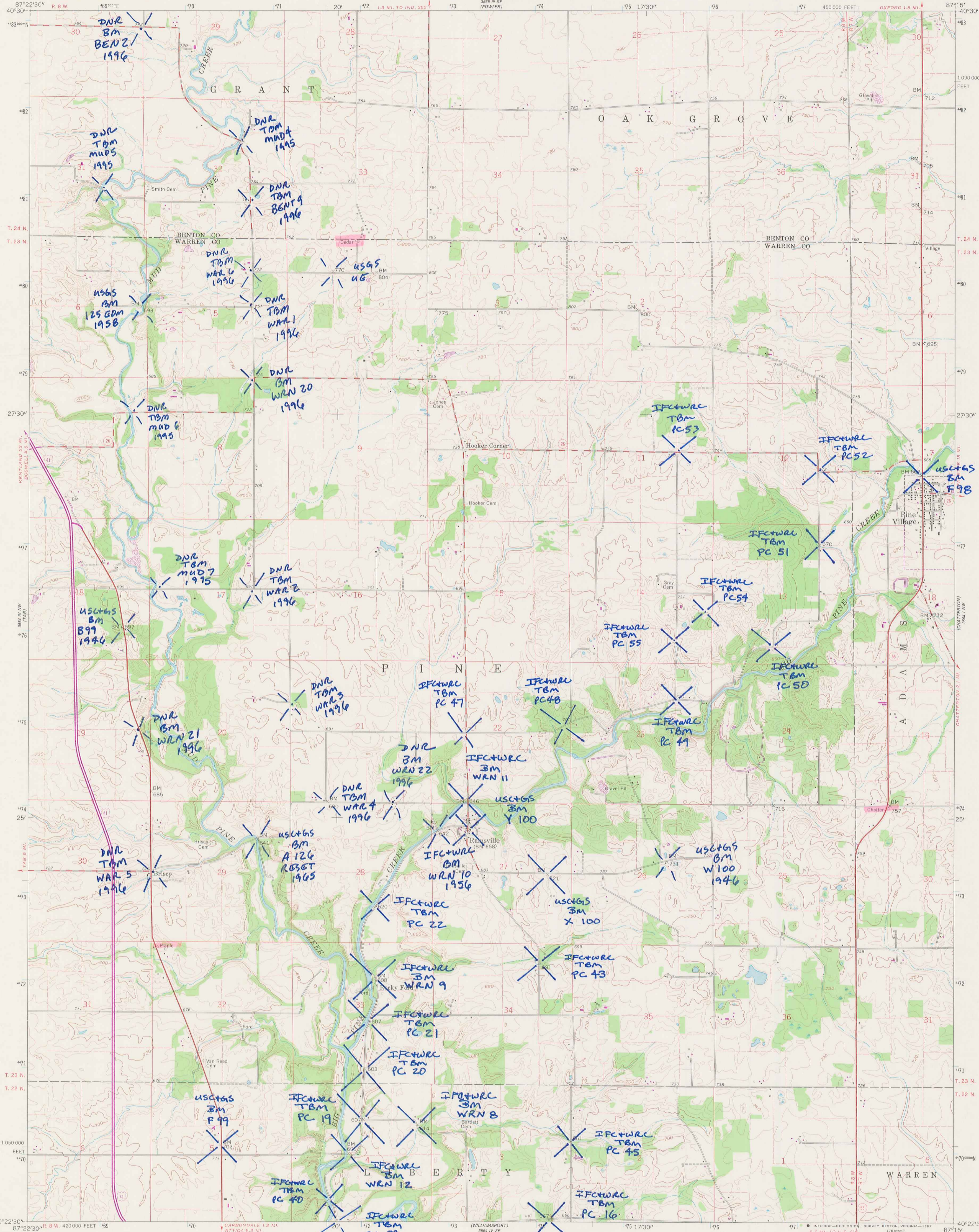
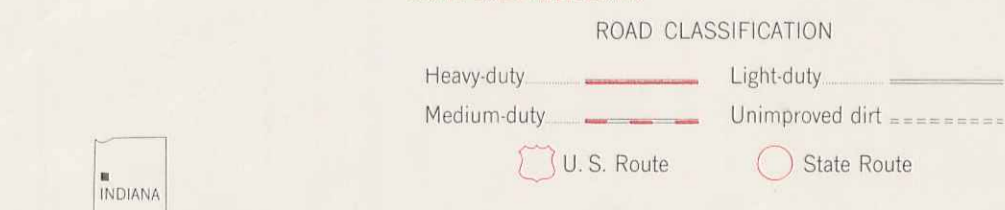
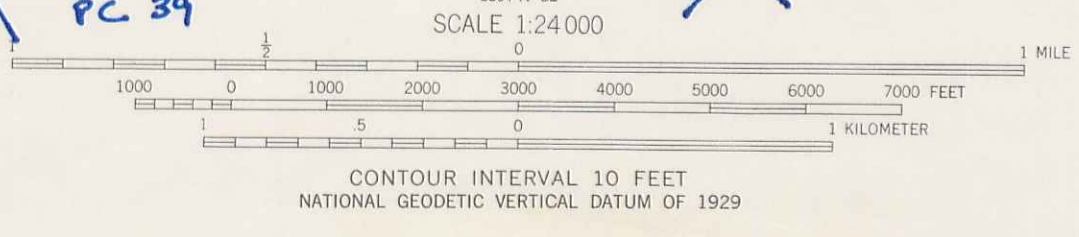


DUPLICATE COPY

DUPLICATE COPY



Mapped, edited, and published by the Geological Survey  
Control by USGS, NOS/NOAA, and Indiana Flood Control and  
Water Resources Commission  
Topography by photogrammetric methods from aerial  
photographs taken 1958. Field checked 1961  
Polyconic projection. 10,000-foot grid based on  
Indiana coordinate system, west zone  
1000-meter Universal Transverse Mercator grid ticks,  
zone 16, shown in blue. 1927 North American Datum  
To place on the predicted North American Datum 1983  
move the projection lines 3 meters east  
as shown by dashed corner ticks  
Fine red dashed lines indicate selected fence and field lines where  
generally visible on aerial photographs. This information is unchecked  
Revisions shown in purple and woodland compiled from  
aerial photographs taken 1976 and other source data  
This information not field checked. Map edited 1980



CONTOUR INTERVAL 10 FEET  
NATIONAL GEODETIC VERTICAL DATUM OF 1929



DUPLICATE COPY

DUPLICATE COPY

THIS MAP COMPLIES WITH NATIONAL MAP ACCURACY STANDARDS  
FOR SALE BY U. S. GEOLOGICAL SURVEY, RESTON, VIRGINIA 22092  
AND INDIANA DEPARTMENT OF NATURAL RESOURCES, INDIANAPOLIS, INDIANA 46204  
A FOLDER DESCRIBING TOPOGRAPHIC MAPS AND SYMBOLS IS AVAILABLE ON REQUEST

PINE VILLAGE, IND.  
N 4022.5-W 8715/7.5  
1961  
PHOTOREVISED 1980  
DMA 3564 IV NE-SERIES 7581