

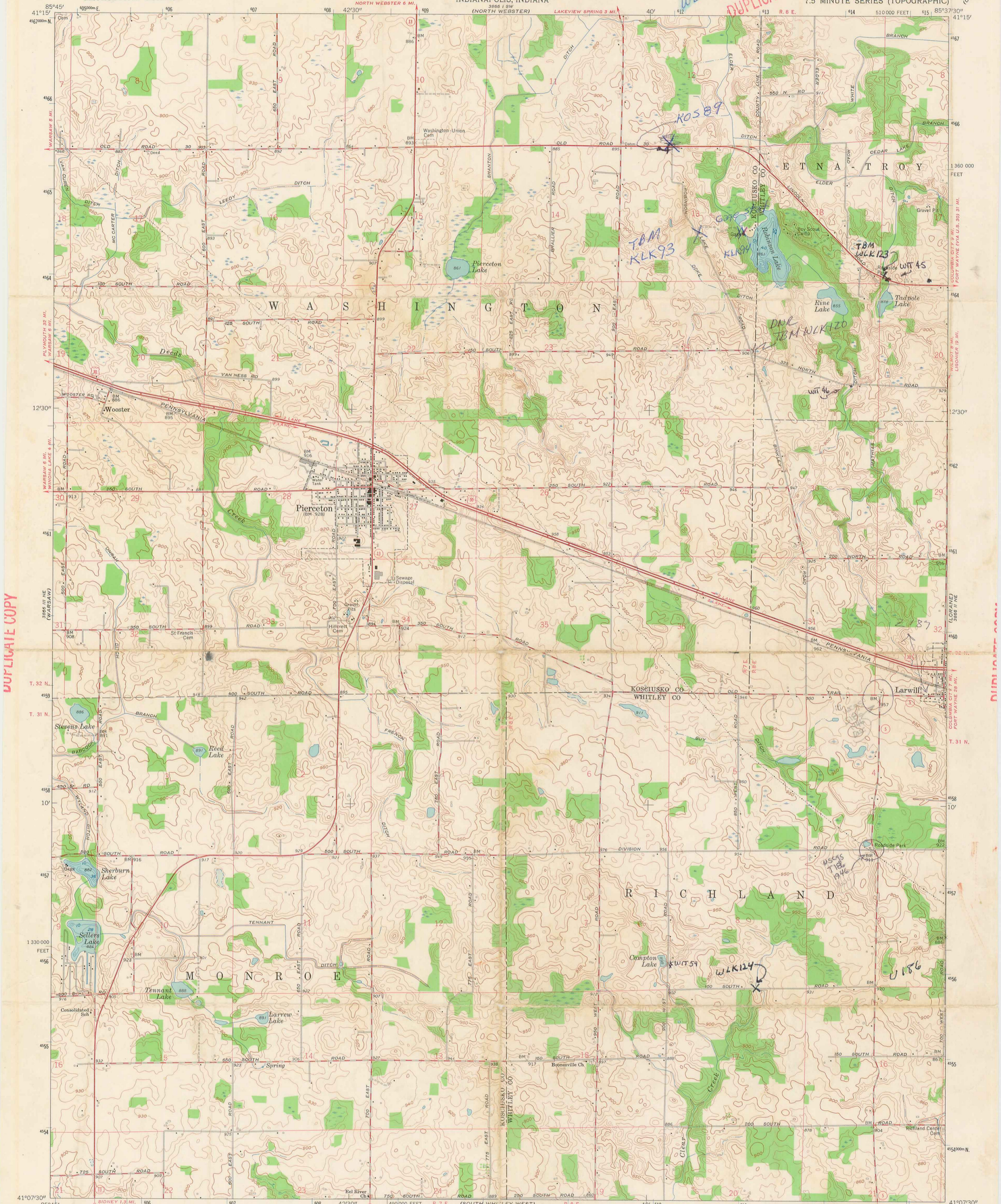
DUPLICATE COPY

UNITED STATES
DEPARTMENT OF THE INTERIOR
GEOLOGICAL SURVEY

STATE OF INDIANA
INDIANA DEPARTMENT OF CONSERVATION
INDIANAPOLIS, INDIANA

DUPLICATE COPY

PIERCETON QUADRANGLE
INDIANA
7.5 MINUTE SERIES (TOPOGRAPHIC)

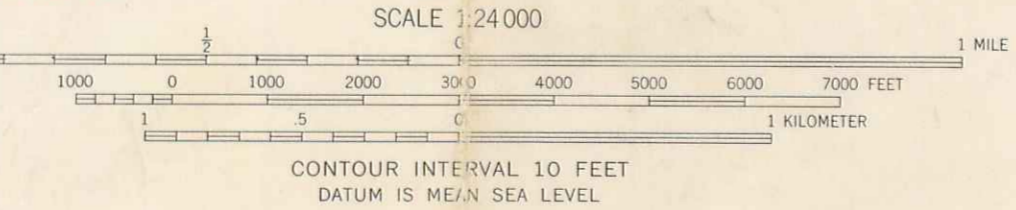


DUPLICATE COPY

DUPLICATE COPY

Mapped, edited, and published by the Geological Survey
Control by USGS and USC&GS
Planimetry by photogrammetric methods from aerial photographs
taken 1948. Topography by planimetric surveys 1950. Revised 1962
Depth curves and soundings compiled from USGS-
Indiana Department of Conservation lake charts
Polyconic projection. 1927 North American datum
10,000-foot grid based on Indiana coordinate system, east zone
1000-meter Universal Transverse Mercator grid ticks,
zone 16, shown in blue

UTM GRID AND 1962 MAGNETIC NORTH
DECLINATION AT CENTER OF SHEET



THIS MAP COMPLIES WITH NATIONAL MAP ACCURACY STANDARDS
FOR SALE BY U.S. GEOLOGICAL SURVEY, WASHINGTON 25, D. C.
AND INDIANA DEPARTMENT OF CONSERVATION, INDIANAPOLIS, INDIANA
A FOLDER DESCRIBING TOPOGRAPHIC MAPS AND SYMBOLS IS AVAILABLE ON REQUEST



ROAD CLASSIFICATION
Heavy-duty ——— Light-duty ———
Medium-duty ——— Unimproved dirt - - - - -
U.S. Route ——— State Route ———

PIERCETON, IND.
N4107.5-W8537.5/7.5

1962

AMS 3866 11 NW-SERIES V851

3866 11 NW
4 W. MAIN ST.
NORTH

3866 11 NW
4 W. MAIN ST.
EAST

DUPLICATE COPY

DUPLICATE COPY