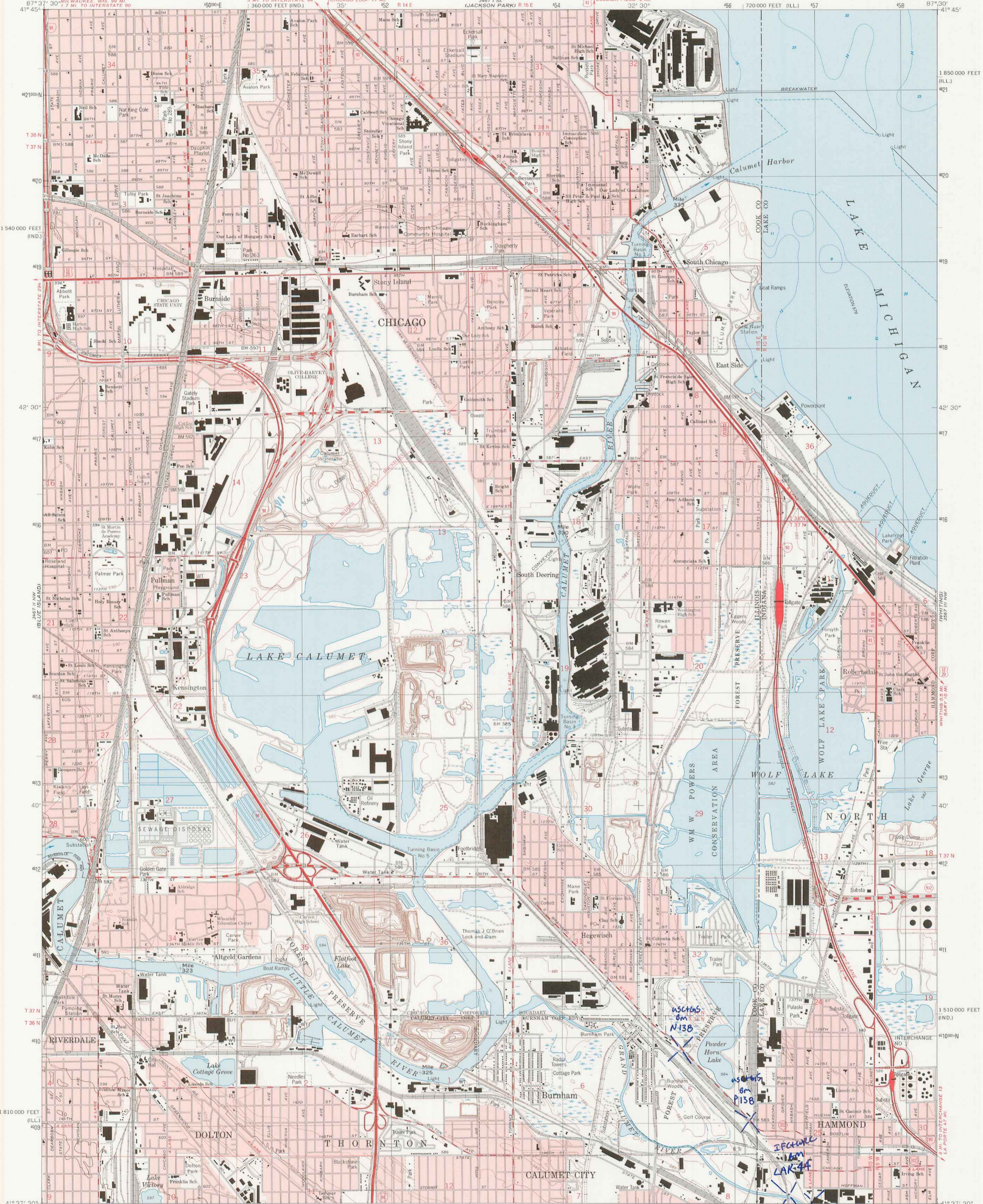


DUPLICATE COPY



Produced by the United States Geological Survey
Control by USGS, NOS/NOAA and City of Chicago
Topography by photogrammetric methods from aerial photographs
taken 1964 and planimetric surveys 1927. Revised from aerial
photographs taken 1968. Field checked 1991. Map edited 1991
Selected hydrographic data compiled from NOS chart 14905 (1986)
This information is not intended for navigational purposes
Projection: Illinois coordinate system, east zone
(transverse Mercator)
10,000-foot grid ticks: Illinois coordinate system, east zone
and Indiana coordinate system, west zone
100-meter Universal Transverse Mercator grid, zone 16
1927 North American Datum
The difference between 1927 North American Datum and North
American Datum of 1983 (NAD 83) for 7.5-minute intersections
is given in USGS Bulletin 1875. The NAD 83 is shown by
dashed corner ticks
There may be private inholdings within the boundaries of
the National or State reservations shown on this map
Red tint indicates areas in which only landmark buildings are shown

DUPLICATE COPY

SCALE 1:24,000
CONTOUR INTERVAL 5 FEET
NATIONAL GEODETIC VERTICAL DATUM OF 1929
DEPTH CURVES AND SOUNDINGS IN FEET
REFERENCE LEVEL 576.8 FEET, INTERNATIONAL GREAT LAKES DATUM
THE RELATIONSHIP BETWEEN THE TWO DATUMS IS VARIABLE

DUPLICATE COPY

CLASSIFICATION
LAK 45
LAK 44

Primary highway, Light-duty road, hard or hard surface
Secondary highway, Improved surface
Unimproved road
Interstate Route U.S. Route State Route

QUADRANGLE LOCATION
LAKE CALUMET, ILL.-IND.
41087-F5-TF-024
1991
DMA 3467 II NE-SERIES V863