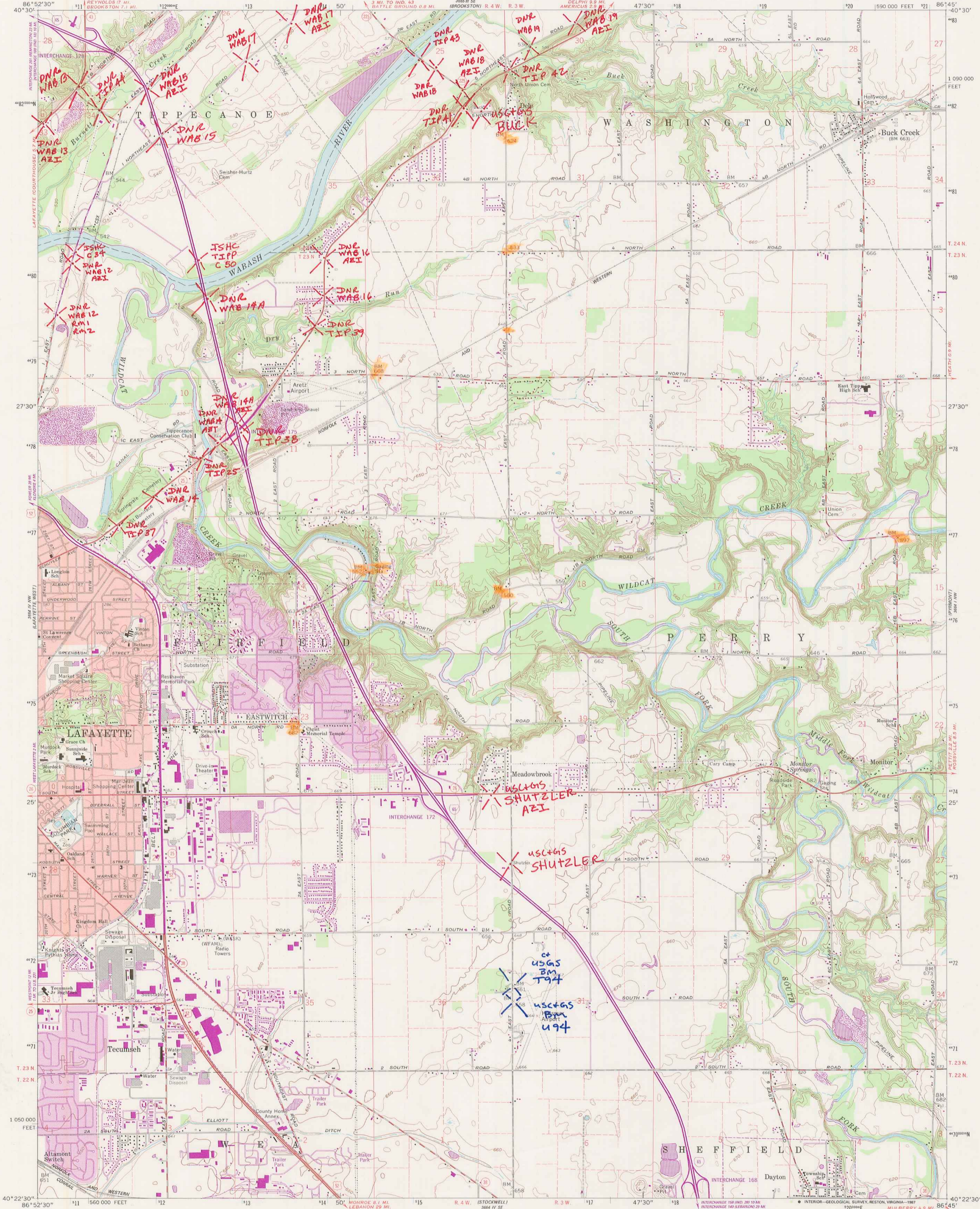


DUPLICATE COPY

DUPLICATE COPY

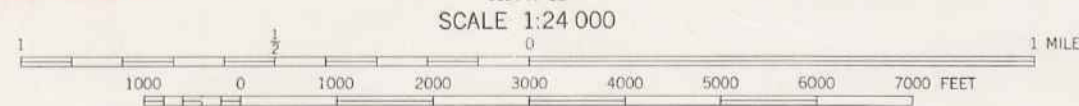


Mapped, edited, and published by the Geological Survey
Control by USGS, NOS/NOAA, USCE, and Indiana Flood Control
and Water Resources Commission
Topography by photogrammetric methods from aerial
photographs taken 1958. Field checked 1961
Polyconic projection. 10,000-foot grid ticks based on
Indiana coordinate system, west zone
1000-meter Universal Transverse Mercator grid ticks,
zone 16, shown in blue
1927 North American Datum
To place on the predicted North American Datum 1983
move the projection lines 1 meter east as shown by dashed corner ticks
Fine red dashed lines indicate selected fence and field lines
generally visible on aerial photographs. This information is unchecked
Red tint indicates area in which only landmark buildings are shown

DUPLICATE COPY

DUPLICATE COPY

DUPLICATE COPY



CONTOUR INTERVAL 10 FEET
NATIONAL GEODESIC VERTICAL DATUM OF 1929

THIS MAP COMPLIES WITH NATIONAL MAP ACCURACY STANDARDS
FOR SALE BY U. S. GEOLOGICAL SURVEY, DENVER, COLORADO 80225 OR RESTON, VIRGINIA 22092,
AND INDIANA DEPARTMENT OF NATURAL RESOURCES, INDIANAPOLIS, INDIANA 46204
A FOLDER DESCRIBING TOPOGRAPHIC MAPS AND SYMBOLS IS AVAILABLE ON REQUEST

Revisions shown in purple and woodland compiled in cooperation
with State of Indiana agencies from aerial photographs
taken 1981 and other sources. This information not field checked
Map edited 1986
Purple tint indicates extension of urban area

ROAD CLASSIFICATION

Heavy-duty	Light-duty
Medium-duty	Unimproved dirt
U.S. Route	State Route
Interstate Route	

LAFAYETTE EAST, IND.
40086-D7-TF-024

1961
PHOTOREVISED 1986
DMA 3664 IV NE-SERIES V851