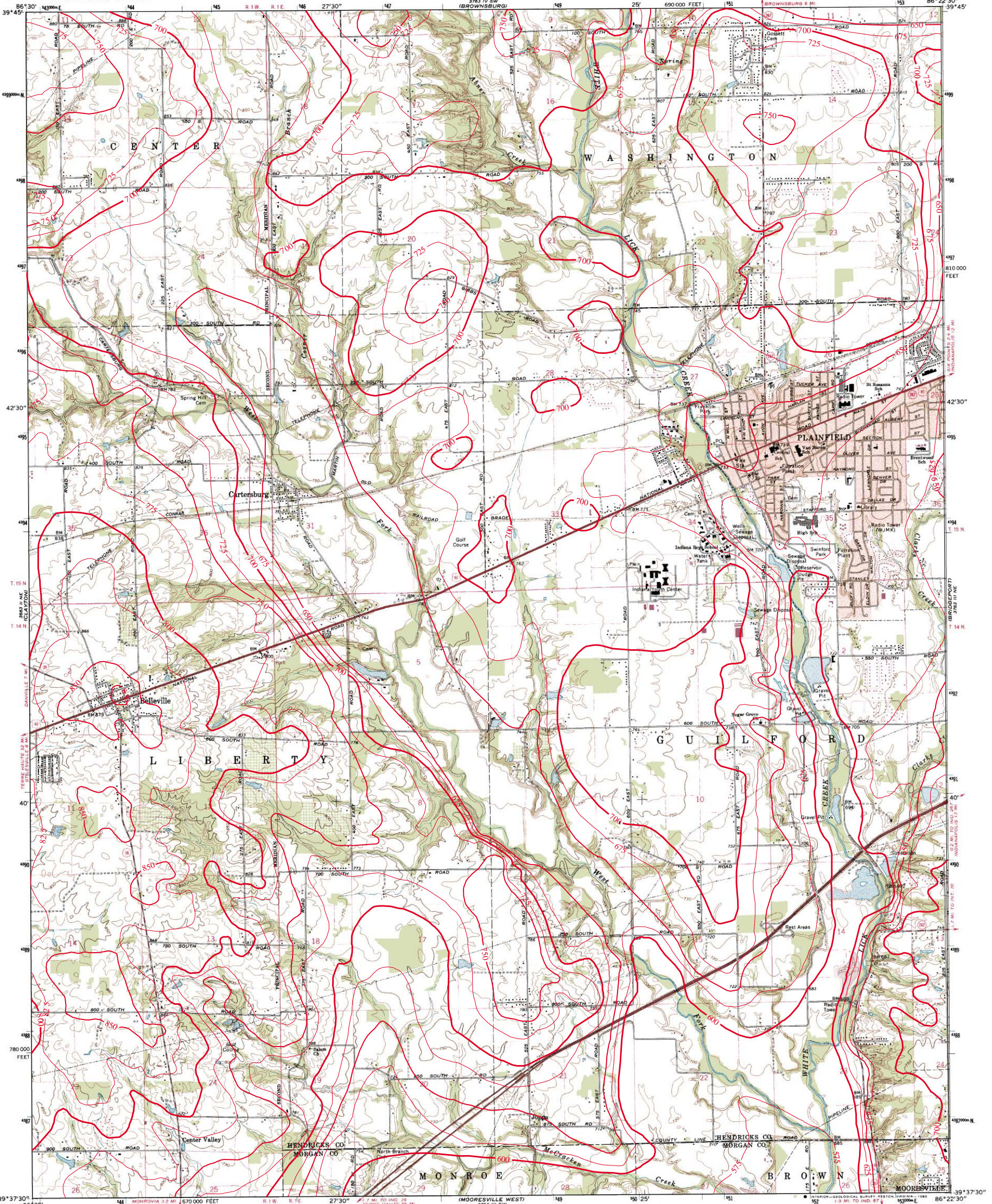


BEDROCK TOPOGRAPHY OF PLAINFIELD QUADRANGLE, INDIANA

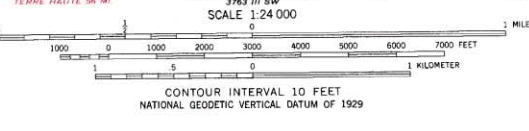
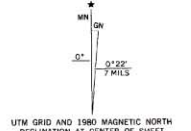
UNITED STATES
DEPARTMENT OF THE INTERIOR
GEOLOGICAL SURVEY

STATE OF INDIANA
DEPARTMENT OF NATURAL RESOURCES
INDIANAPOLIS, INDIANA

PLAINFIELD QUADRANGLE
INDIANA
7.5 MINUTE SERIES (TOPOGRAPHIC)



Mapped, edited, and published by the Geological Survey
Control by USGS and USCGS
Planimetry by photogrammetric methods from aerial photographs taken 1952. Topography by planetable surveys 1953. Revised from aerial photographs taken 1969. Field checked 1970
Polyconic projection
10,000-foot grid based on Indiana coordinate system, west zone
1000-meter Universal Transverse Mercator grid ticks, zone 16, shown in blue 1927 North American Datum
To place on the predicted North American Datum 1983 move the projection lines 1 meter south as shown by dashed corner ticks
Fine red dashed lines indicate selected fence and field lines where generally visible on aerial photographs. This information is unchecked
Red tint indicates area in which only landmark buildings are shown



THIS MAP COMPLIES WITH NATIONAL MAP ACCURACY STANDARDS
FOR SALE BY U.S. GEOLOGICAL SURVEY, DENVER, COLORADO 80225, OR RESTON, VIRGINIA 22092
AND INDIANA DEPARTMENT OF NATURAL RESOURCES, INDIANAPOLIS, INDIANA 46204
A FOLDER DESCRIBING TOPOGRAPHIC MAPS AND SYMBOLS IS AVAILABLE ON REQUEST

ROAD CLASSIFICATION
Primary highway, hard surface ——— Light-duty road, hard or improved surface ———
Secondary highway, hard surface ——— Unimproved road ———
Interstate Route U.S. Route State Route

QUADRANGLE LOCATION

PLAINFIELD, IND.
N3937.5—W8622.5/7.5
1970
PHOTOREVISED: 1980
DMA 3763 III NW—SERIES V851

Revisions shown in purple compiled in cooperation with State of Indiana agencies from aerial photographs taken 1977 and other source data. This information not field checked. Map edited 1980



Bedrock surface map derived from water well records housed in IDNR/DOW, Ground Water Section, oil and gas well records housed in IDNR/DOG, and seismic data from the Indiana Geological Survey (IGS).
Bedrock contouring by Marvin Thompson and William Herring, Ground Water Section, Division of Water, IDNR, 1999.
Originally mapped at a scale of 1:24,000 on USGS topographic maps. Bedrock surface contour interval = 25 feet.

Map generated by Glenn E. Grove
IDNR, Division of Water, Ground Water Section
January 17, 2002