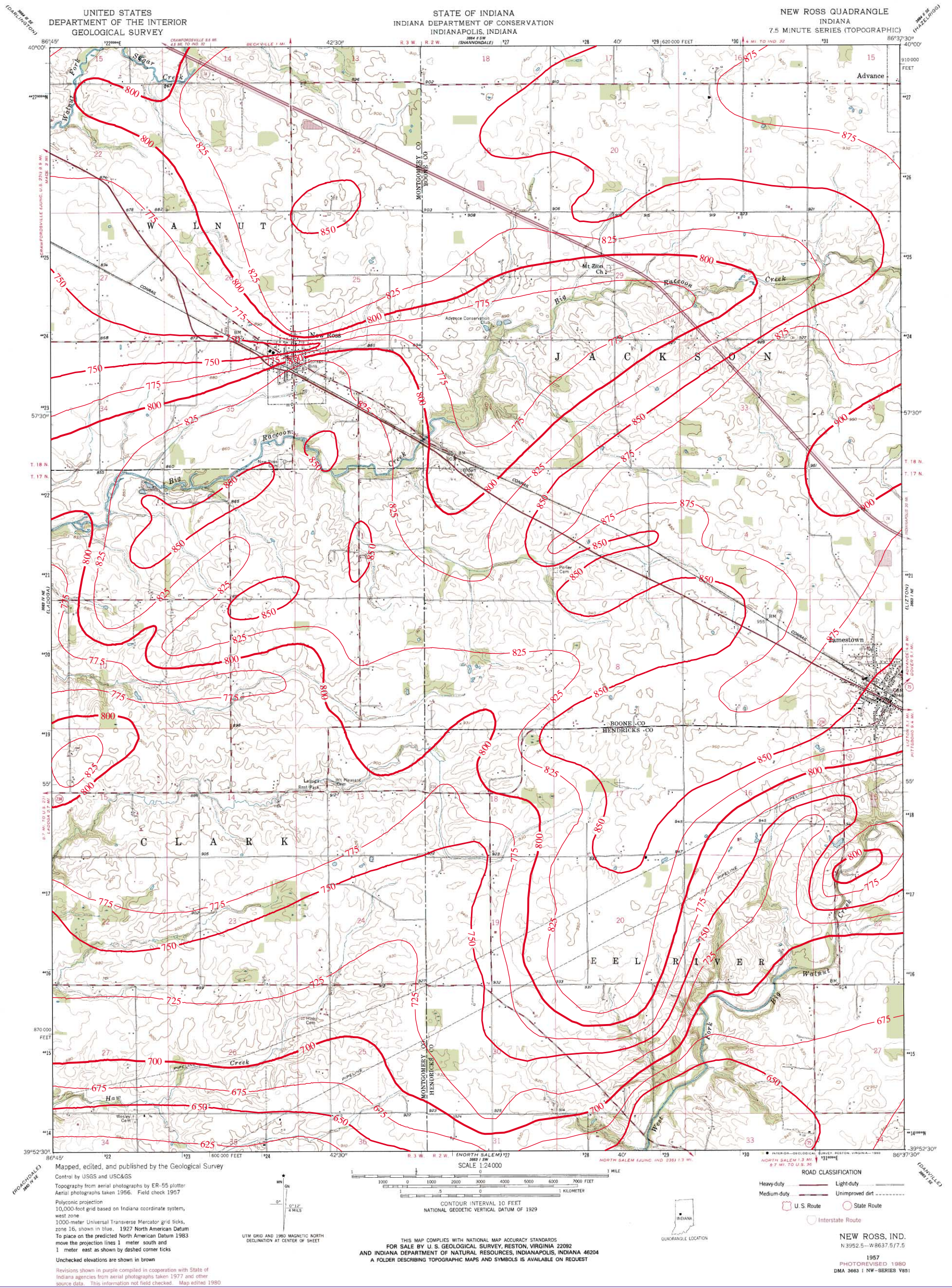


BEDROCK TOPOGRAPHY OF NEW ROSS QUADRANGLE, INDIANA



Bedrock surface map derived from water well records housed in IDNR/DOW, Ground Water Section, oil and gas well records housed in IDNR/DOG, and seismic data from the Indiana Geological Survey (IGS). Bedrock contouring by William C. Herring (2002) and Marvin B. Thompson (1999), Ground Water Section, Division of Water, IDNR.

Originally mapped at a scale of 1:24,000 on USGS topographic maps. Bedrock surface contour interval = 25 feet.



Map generated by Glenn E. Grove
 IDNR, Division of Water, Ground Water Section
 September 12, 2002