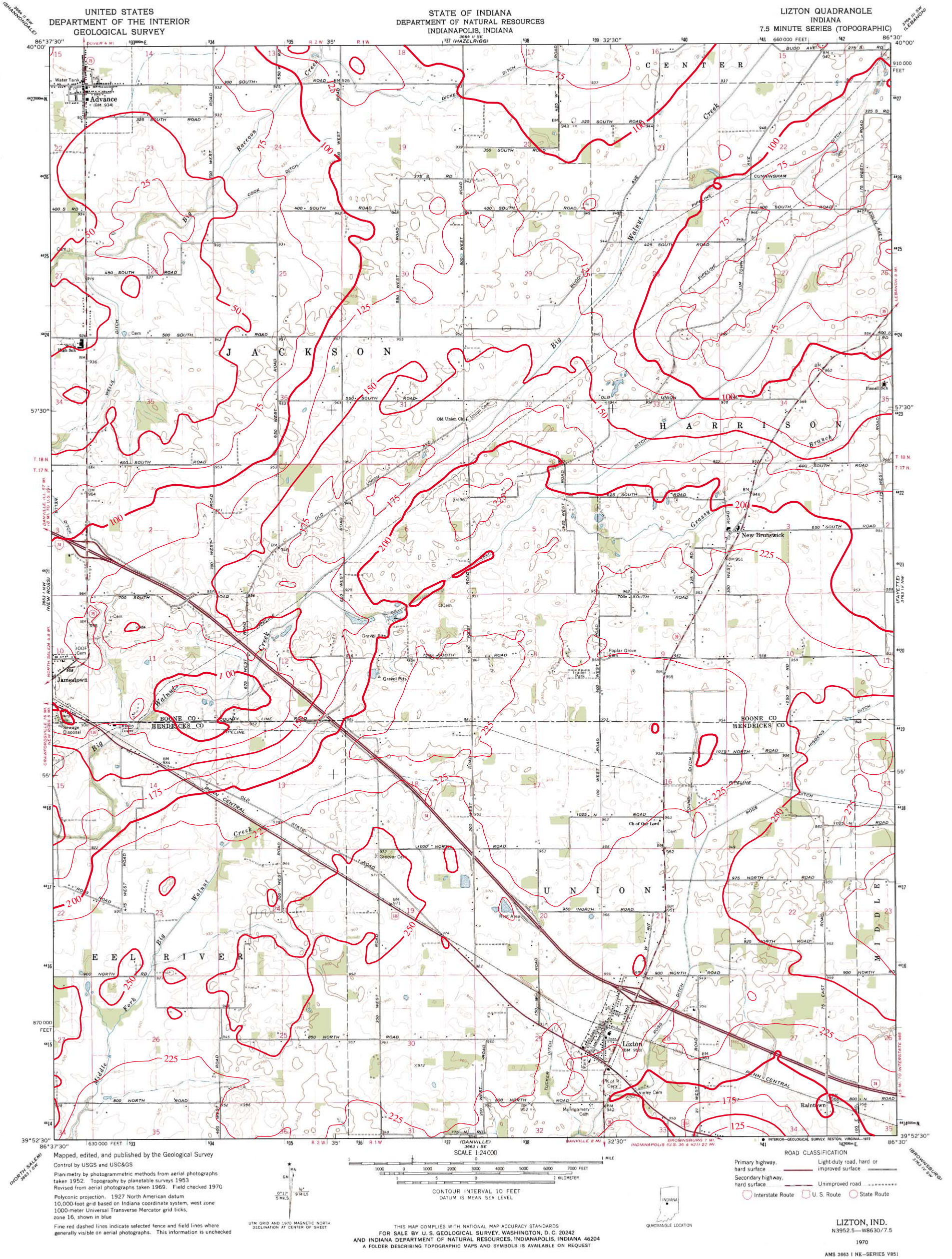


THICKNESS OF UNCONSOLIDATED DEPOSITS OF LIZTON QUADRANGLE, INDIANA



This map showing thickness of unconsolidated deposits was created by Glenn E. Grove, IDNR, Division of Water, Ground Water Section. The digital elevation grid of the bedrock surface was subtracted from the grid of the land surface and the resultant grid contoured in ArcInfo. The land surface elevation grid is from 1:24,000 scale digital topography by the U.S. Geological Survey, Reston, Virginia, 1999 and 2001. The bedrock surface elevation grid is from a digital map of the bedrock surface topography of Boone County. The bedrock surface contouring was done by Marvin B. Thompson, IDNR, Division of Water, Ground Water Section, 1999, at a scale of 1:24,000.

Unconsolidated thickness contour interval = 25 feet (shown in red).



Map generated by Glenn E. Grove
IDNR, Division of Water, Ground Water Section
October 28, 2002