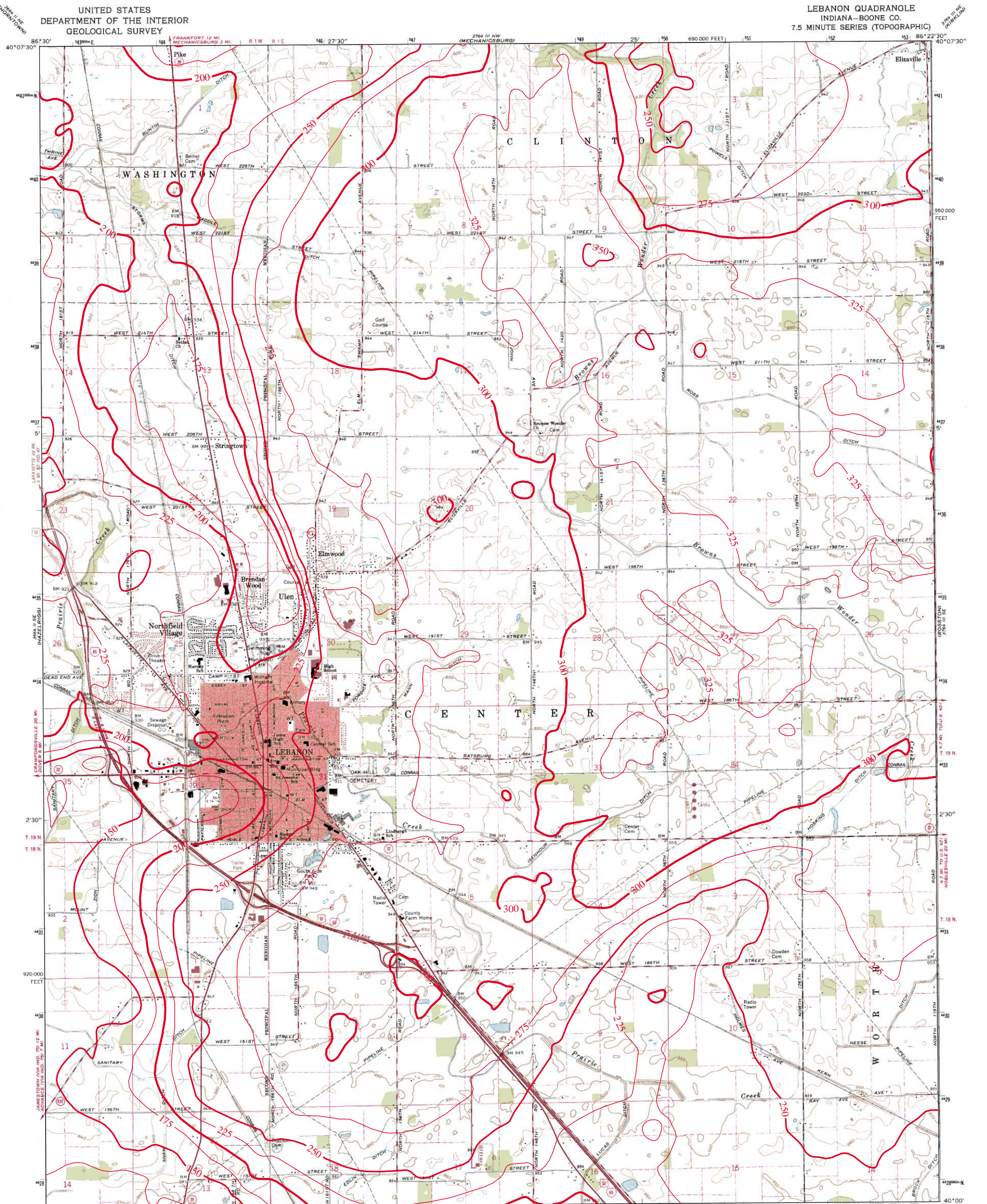


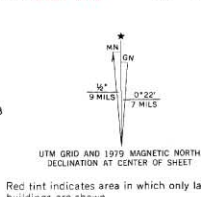
THICKNESS OF UNCONSOLIDATED DEPOSITS OF LEBANON QUADRANGLE, INDIANA

UNITED STATES
DEPARTMENT OF THE INTERIOR
GEOLOGICAL SURVEY

LEBANON QUADRANGLE
INDIANA—BOONE CO.
7.5 MINUTE SERIES (TOPOGRAPHIC)



Mapped, edited, and published by the Geological Survey
Revised in cooperation with State of Indiana Department
of Conservation
Control by USGS, USC&GS, and Indiana Flood Control and Water
Resources Commission
Planimetry by photogrammetric methods from aerial photographs
taken 1953. Topography by planetable surveys 1953. Revised 1963
Polyconic projection. 1927 North American datum
10,000-foot grid based on Indiana coordinate system, west zone
1000-meter Universal Transverse Mercator grid ticks,
zone 16, shown in blue
To place on the predicted North American Datum 1983
move the projection lines 1 meter south and
0 meters west as shown by dashed corner ticks
Fine red dashed lines indicate selected fence and field lines where
generally visible on aerial photographs. This information is unchecked



SCALE 1:24,000
1 MILE
1000 0 1000 2000 3000 4000 5000 6000 7000 FEET
1 KILOMETER
CONTOUR INTERVAL 10 FEET
NATIONAL GEODETIC VERTICAL DATUM OF 1929

THIS MAP COMPLIES WITH NATIONAL MAP ACCURACY STANDARDS
FOR SALE BY U.S. GEOLOGICAL SURVEY, DENVER, COLORADO 80225, OR RESTON, VIRGINIA 22092
AND INDIANA DEPARTMENT OF NATURAL RESOURCES, INDIANAPOLIS, INDIANA 46204
A FOLDER DESCRIBING TOPOGRAPHIC MAPS AND SYMBOLS IS AVAILABLE ON REQUEST

Revisions shown in purple compiled in cooperation with State
of Indiana agencies from aerial photographs taken 1977 and other
source data. This information not field checked. Map edited 1979
Boundary lines shown in purple compiled from latest
information available from the controlling authority

ROAD CLASSIFICATION
Heavy-duty ——— Light-duty ———
Medium-duty ——— Unimproved dirt ———
○ Interstate Route □ U.S. Route ○ State Route

LEBANON, IND.
N4000—W8622.5/7.5
1963
PHOTOREVISED 1979
DMA 3764 III SW—SERIES Y851

This mapshowing thickness of unconsolidated deposits was created by Glenn E. Grove, IDNR, Division of Water, Ground Water Section. The digital elevation grid of the bedrock surface was subtracted from the grid of the land surface and the resultant grid contoured in ArcInfo. The land surface elevation grid is from 1:24,000 scale digital hypsography by the U.S. Geological Survey, Reston, Virginia, 1999 and 2001. The bedrock surface elevation grid is from a digital map of the bedrock surface topography of Boone County. The bedrock surface contouring was done by Glenn E. Grove (2002), William C. Herring (2002), and Marvin B. Thompson (1999), at a scale of 1:24,000.

Unconsolidated thickness contour interval = 25 feet (shown in red).



Map generated by Glenn E. Grove
IDNR, Division of Water, Ground Water Section
October 28, 2002