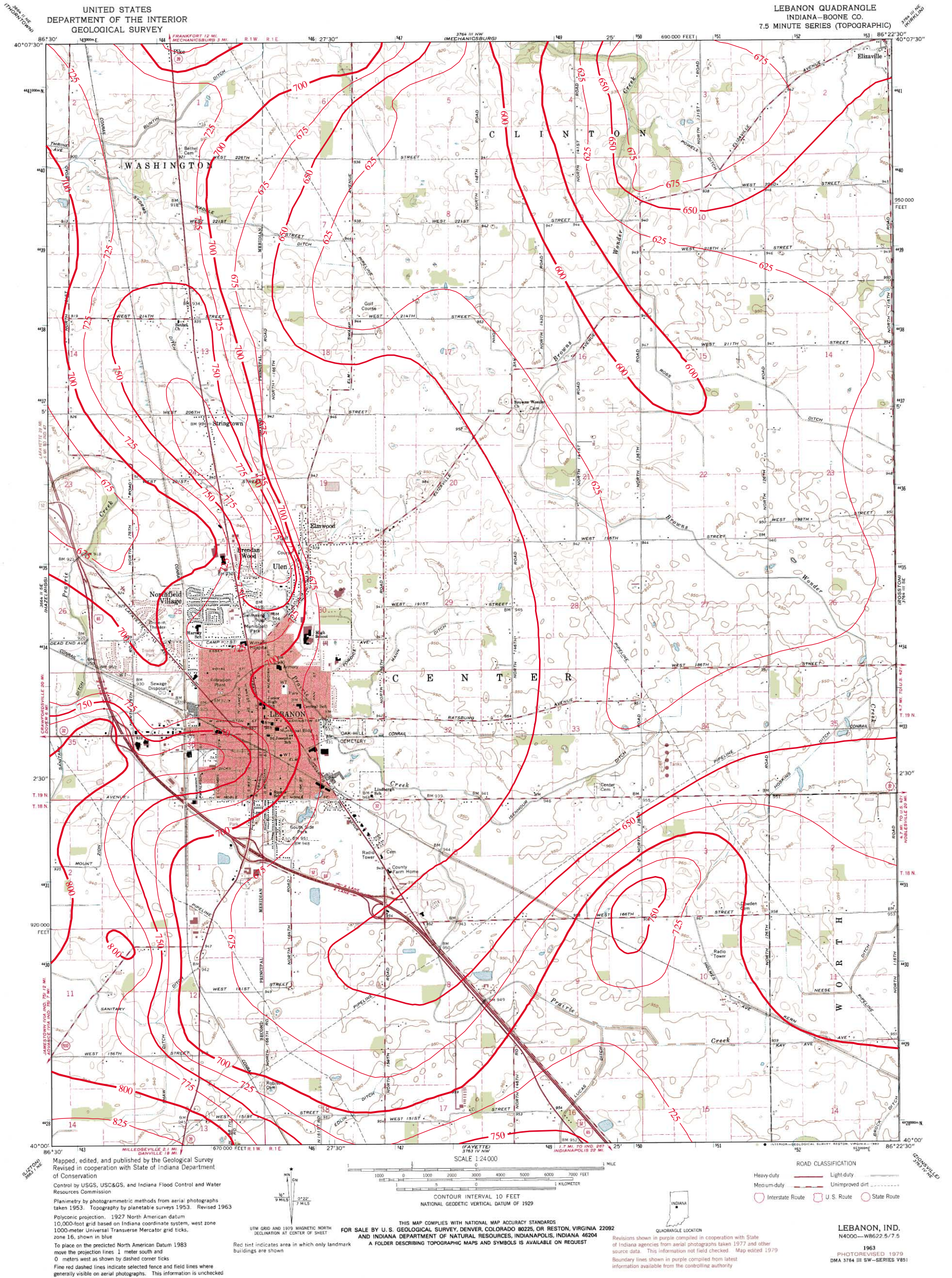


# BEDROCK TOPOGRAPHY OF LEBANON QUADRANGLE, INDIANA



Bedrock surface map derived from water well records housed in IDNR/DOW, Ground Water Section, oil and gas well records housed in IDNR/DOG, and seismic data from the Indiana Geological Survey (IGS). Bedrock contouring by Glenn E. Grove (2002), William C. Herring (2002), and Marvin B. Thompson (1999), Ground Water Section, Division of Water, IDNR.

Originally mapped at a scale of 1:24,000 on USGS topographic maps. Bedrock surface contour interval = 25 feet.



Map generated by Glenn E. Grove  
IDNR, Division of Water, Ground Water Section  
September 13, 2002