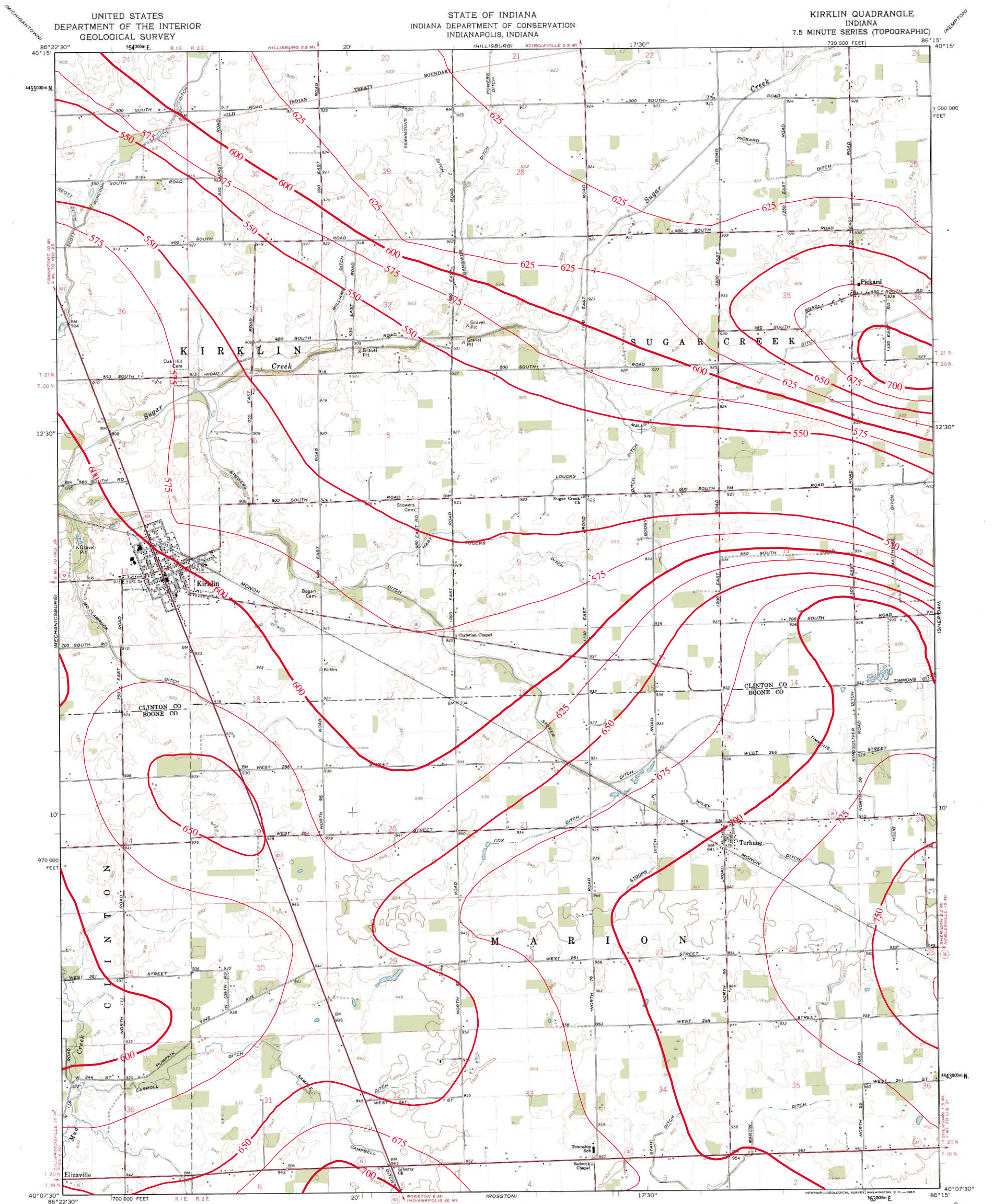


# BEDROCK TOPOGRAPHY OF KIRKLIN QUADRANGLE, INDIANA



Mapped, edited, and published by the Geological Survey  
 Control by USGS, USCS&GS, and Indiana Flood Control and  
 Water Resources Commission  
 Topography by photogrammetric methods from aerial  
 photographs taken 1958. Field checked 1961  
 Polyconic projection. 1927 North American datum  
 10,000-foot grid based on Indiana coordinate system, west zone  
 1000-meter Universal Transverse Mercator grid ticks,  
 zone 16, shown in blue  
 Fine red dashed lines indicate selected fence and field lines where  
 generally visible on aerial photographs. This information is unchecked  
 Map photosinspected 1977  
 No major culture or drainage changes observed

SCALE 1:24,000  
 1000 0 1000 2000 3000 4000 5000 6000 7000 FEET  
 1 0 1 2 3 4 5 6 7 8 9 10 KILOMETER  
 CONTOUR INTERVAL 10 FEET  
 DATUM IS MEAN SEA LEVEL

THIS MAP COMPLIES WITH NATIONAL MAP ACCURACY STANDARDS  
 FOR SALE BY U.S. GEOLOGICAL SURVEY, DENVER, COLORADO 80225, OR RESTON, VIRGINIA 22092  
 AND INDIANA DEPARTMENT OF NATURAL RESOURCES, INDIANAPOLIS, INDIANA 46204  
 A FOLDER DESCRIBING TOPOGRAPHIC MAPS AND SYMBOLS IS AVAILABLE ON REQUEST

ROAD CLASSIFICATION  
 Heavy-duty ——— Light-duty ———  
 Medium-duty ——— Unimproved dirt ———  
 U.S. Route      State Route

KIRKLIN, IND.  
 N4007 5—W8615 7.5  
 PHOTONSPECTED 1977  
 1961



Bedrock surface map derived from water well records housed in IDNR/DOW, Ground Water Section,  
 oil and gas well records housed in IDNR/DOG, and seismic data from the Indiana Geological Survey (IGS).  
 Bedrock contouring by Glenn E. Grove (2002) and Marvin B. Thompson (1999), Ground Water Section,  
 Division of Water, IDNR.

Map generated by Glenn E. Grove  
 IDNR, Division of Water, Ground Water Section  
 September 13, 2002

Originally mapped at a scale of 1:24,000 on USGS topographic maps. Bedrock surface contour interval = 25 feet.