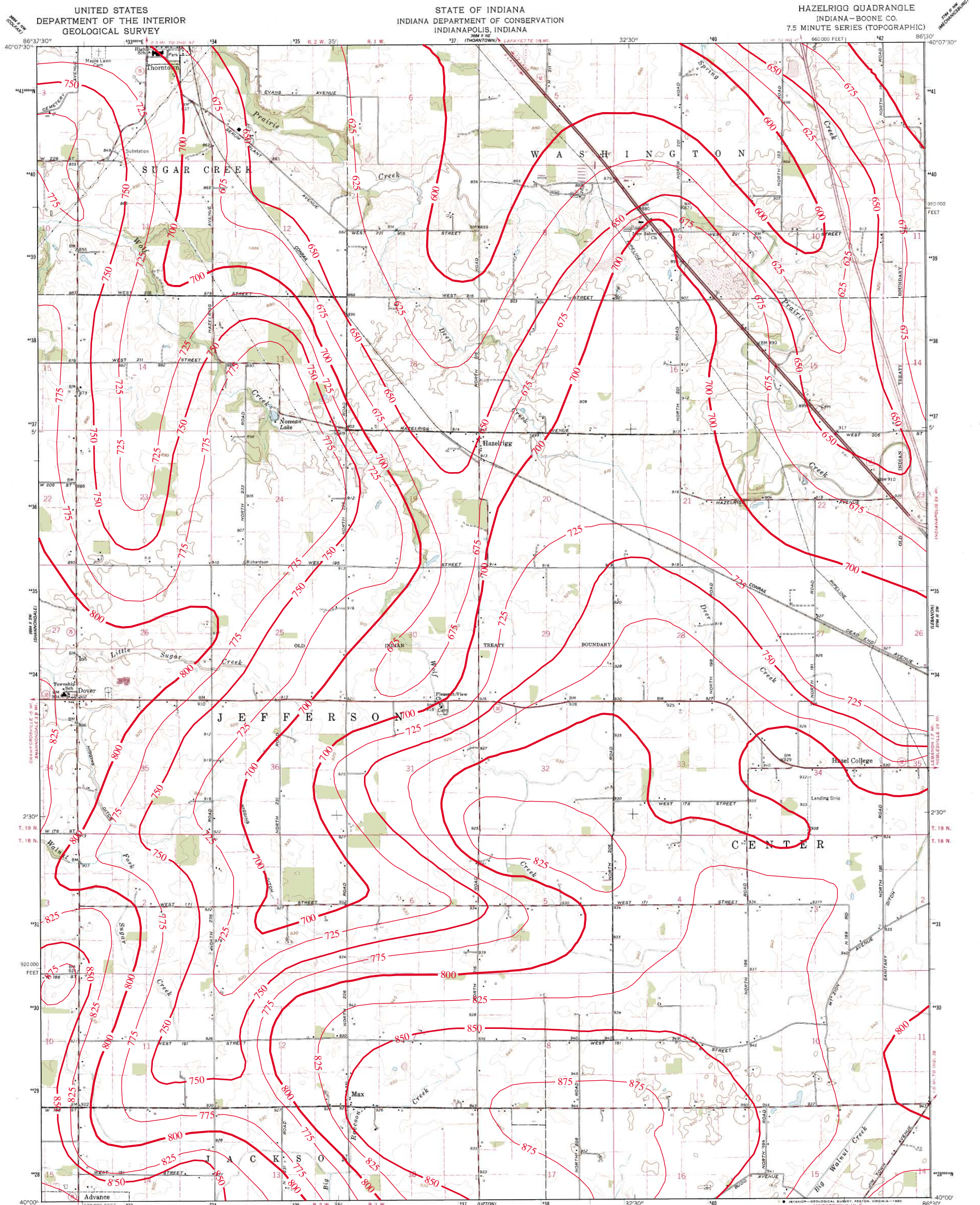
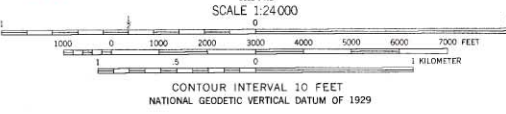


# BEDROCK TOPOGRAPHY OF HAZELRIGG QUADRANGLE, INDIANA



Mapped, edited, and published by the Geological Survey  
 Control by USGS, NOS/NOAA, and Indiana Flood Control and Water  
 Resources Commission  
 Topography by photogrammetric methods from aerial  
 photographs taken 1958. Field checked 1961  
 Polyconic projection. 10,000-foot grid based on  
 Indiana coordinate system, west zone  
 1000-meter Universal Transverse Mercator grid ticks,  
 zone 16, shown in blue. 1927 North American Datum  
 To place on the predicted North American Datum 1983  
 move the projection lines 1 meter south  
 as shown by dashed corner ticks  
 Fine red dashed lines indicate selected fence and field lines where  
 generally visible on aerial photographs. This information checked



**ROAD CLASSIFICATION**  
 Primary highway, hard surface ——— Light-duty road, hard or improved surface  
 Secondary highway, hard surface ——— Unimproved road  
 Interstate Route ——— U. S. Route ——— State Route

THIS MAP COMPLIES WITH NATIONAL MAP ACCURACY STANDARDS  
 FOR SALE BY U. S. GEOLOGICAL SURVEY, RESTON, VIRGINIA 22092  
 AND INDIANA DEPARTMENT OF NATURAL RESOURCES, INDIANAPOLIS, INDIANA 46204  
 A FOLDER DESCRIBING TOPOGRAPHIC MAPS AND SYMBOLS IS AVAILABLE ON REQUEST

Revisions shown in purple completed in cooperation with State of  
 Indiana agencies from aerial photographs taken 1977 and other  
 source data. This information not field checked. Map edited 1980

**HAZELRIGG, IND.**  
 N4000-W8630/7.5  
 1961  
 PHOTOGRAPHIC: 1958  
 DMA 3694 II SE-SERIES V891



Bedrock surface map derived from water well records housed in IDNR/DOW, Ground Water Section,  
 oil and gas well records housed in IDNR/DOG, and seismic data from the Indiana Geological Survey (IGS).  
 Bedrock contouring by William C. Herring (2002) and Marvin B. Thompson (1999), Ground Water Section,  
 Division of Water, IDNR.

Originally mapped at a scale of 1:24,000 on USGS topographic maps. Bedrock surface contour interval = 25 feet.

Map generated by Glenn E. Grove  
 IDNR, Division of Water, Ground Water Section  
 September 12, 2002