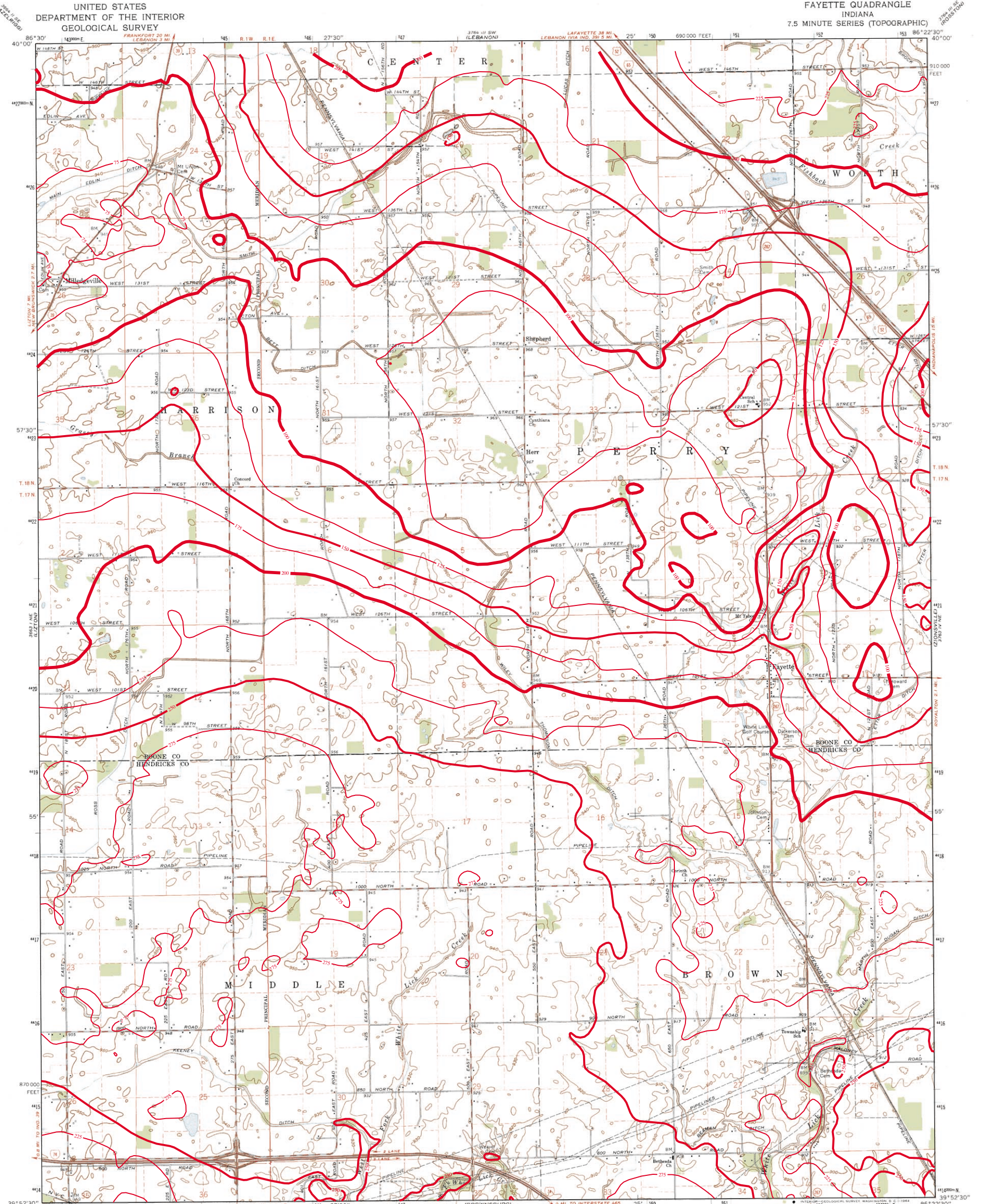


THICKNESS OF UNCONSOLIDATED DEPOSITS OF FAYETTE QUADRANGLE, INDIANA

UNITED STATES
DEPARTMENT OF THE INTERIOR
GEOLOGICAL SURVEY

FAYETTE QUADRANGLE
INDIANA
7.5 MINUTE SERIES (TOPOGRAPHIC)



Maped, edited, and published by the Geological Survey in cooperation with State of Indiana Department of Conservation
Control by USGS and USC&GS
Planimetry by photogrammetric methods from aerial photographs taken 1952. Topography by planetable surveys 1953. Revised 1963
Polyconic projection. 1927 North American datum
10,000-foot grid based on Indiana coordinate system, west zone
1000-meter Universal Transverse Mercator grid ticks, zone 16, shown in blue
Fine red dashed lines indicate selected fence and field lines where generally visible on aerial photographs. This information is unchecked

UTM GRID AND 1983 MAGNETIC NORTH DECLINATION AT CENTER OF SHEET

SCALE 1:24,000
CONTOUR INTERVAL 10 FEET
DATUM IS MEAN SEA LEVEL

ROAD CLASSIFICATION
Heavy-duty ——— Light-duty ———
Medium-duty ——— Unimproved dirt ———
Interstate Route ——— U.S. Route ——— State Route ———

FAYETTE, IND.
N3952.5—W8622.5/7.5
1963
AMS 3763 IV NW—SERIES V851



This map was created by Glenn Grove, IDNR, Division of Water, Ground Water Section. The digital elevation grid of the bedrock surface was subtracted from the grid of the land surface and the resultant grid contoured in ArcInfo. The land surface elevation grid is from 1:24,000 scale digital topography by the U.S. Geological Survey, Reston, Virginia, 1999 and 2001. The bedrock surface elevation grid is from a digital map of the bedrock surface topography of Hendricks County. The bedrock surface contouring was done by Marvin Thompson, IDNR, Division of Water, Ground Water Section, 1999 at a scale of 1:24,000.

Contour interval = 25 feet.

Map generated by Glenn E. Grove
IDNR, Division of Water, Ground Water Section
June 25, 2001